

Distributed by: **Trick-Tools.com**

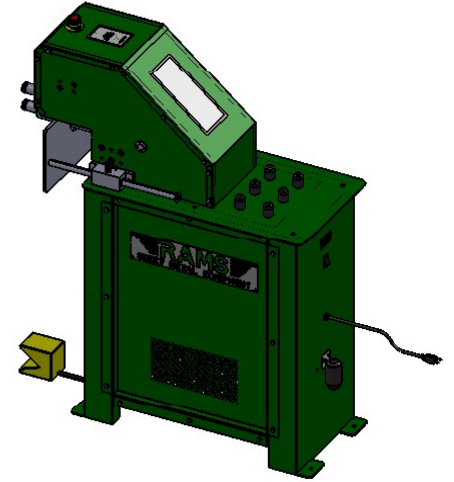
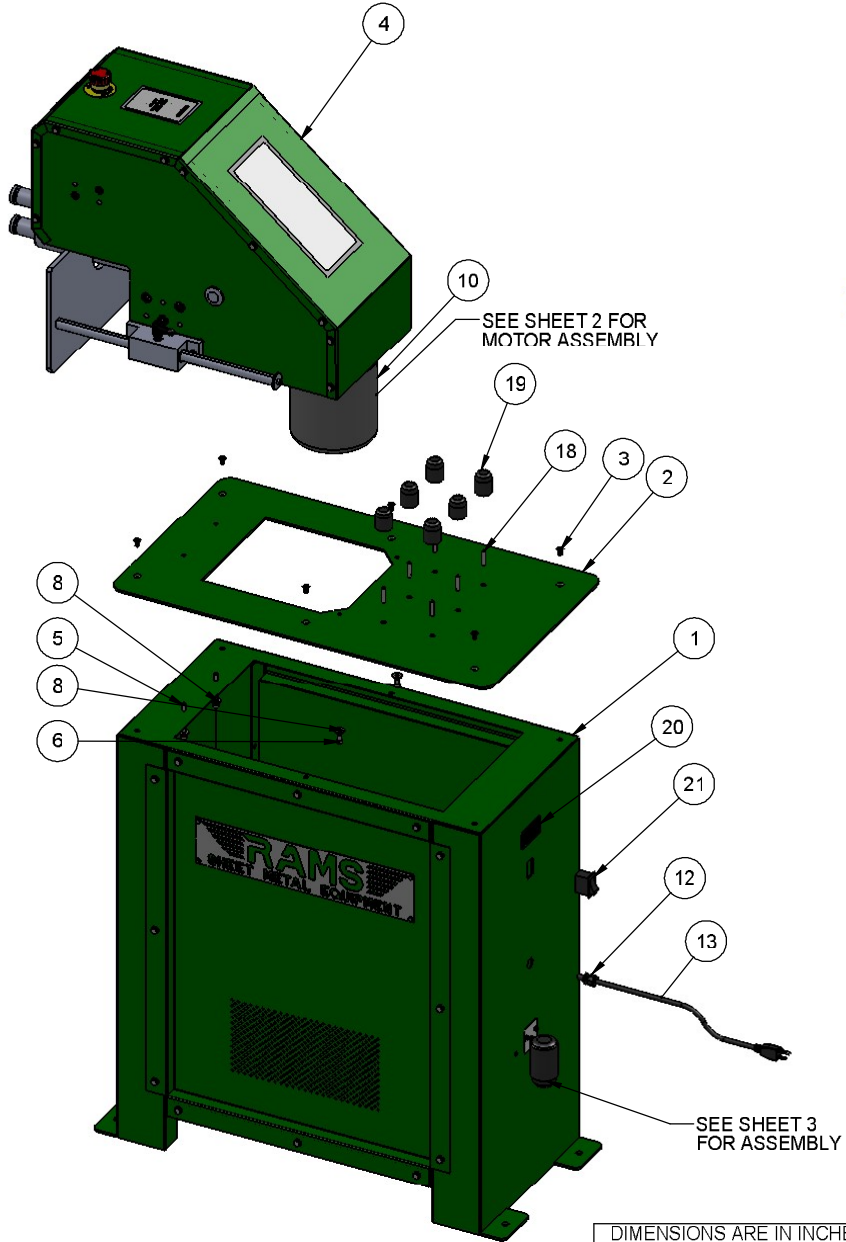
Trick-Tools
80 Truman Road
Pella, IA 50219

Phone:1-877-VAN-SANT
E-mail: sales@trick-tools.com



Here at Trick Tools we believe that our customers deserve the best value in their tool and equipment purchases. We are constantly at work searching out a variety of high quality, high performance tools to offer at the best prices possible. Our commitment to you is that we will not offer “cheap junk” anywhere on our website. You, the customer, help us to evaluate our products constantly and as soon as an ongoing quality issue is uncovered we will correct it or discontinue that product immediately. We hope to earn your continued trust.

ITEM NO.	PART NUMBER	DESCRIPTION	QTY.
1	ROTARY STAND ASSEMBLY	STAND B ASSEMBLY	1
2	2019-03	TABLE TOP ASSEM	1
3	SCHCSREW 0.25-20x0.5x0.5-HX-N	1/4-20 X 1/2, SHCS, BLACK	6
4	ROTARY 2019 TOP	MECHANICAL ASSEM	1
5	HX-SHCS 0.25-20x2.75x1.25-N	1/4-20 X 2-3/4, SHCS, BLACK	2
6	SHCS 1/4-20 X 1/2, BLACK	1/4-20 X 1/2, SHCS, BLACK	2
8	Regular FW 0.25	1/4, 9/16 OD, FLAT WASHER	4
12	69915K51	CORD GRIP	1
13	CORD1	POWER CORD	1
17	FOOT PEDAL	FOOT PEDAL	1
18	SSCUPSKT 0.25-20x1.25-HX-N	1/4-20 X 1-1/4, SET SCREW	6
19	2019-56	ROLLER HOLDER	6
20	SERIAL #	SERIAL No. TAG, RAMS 2428	1
21	3XS59	TIPPETTE SWITCH	1

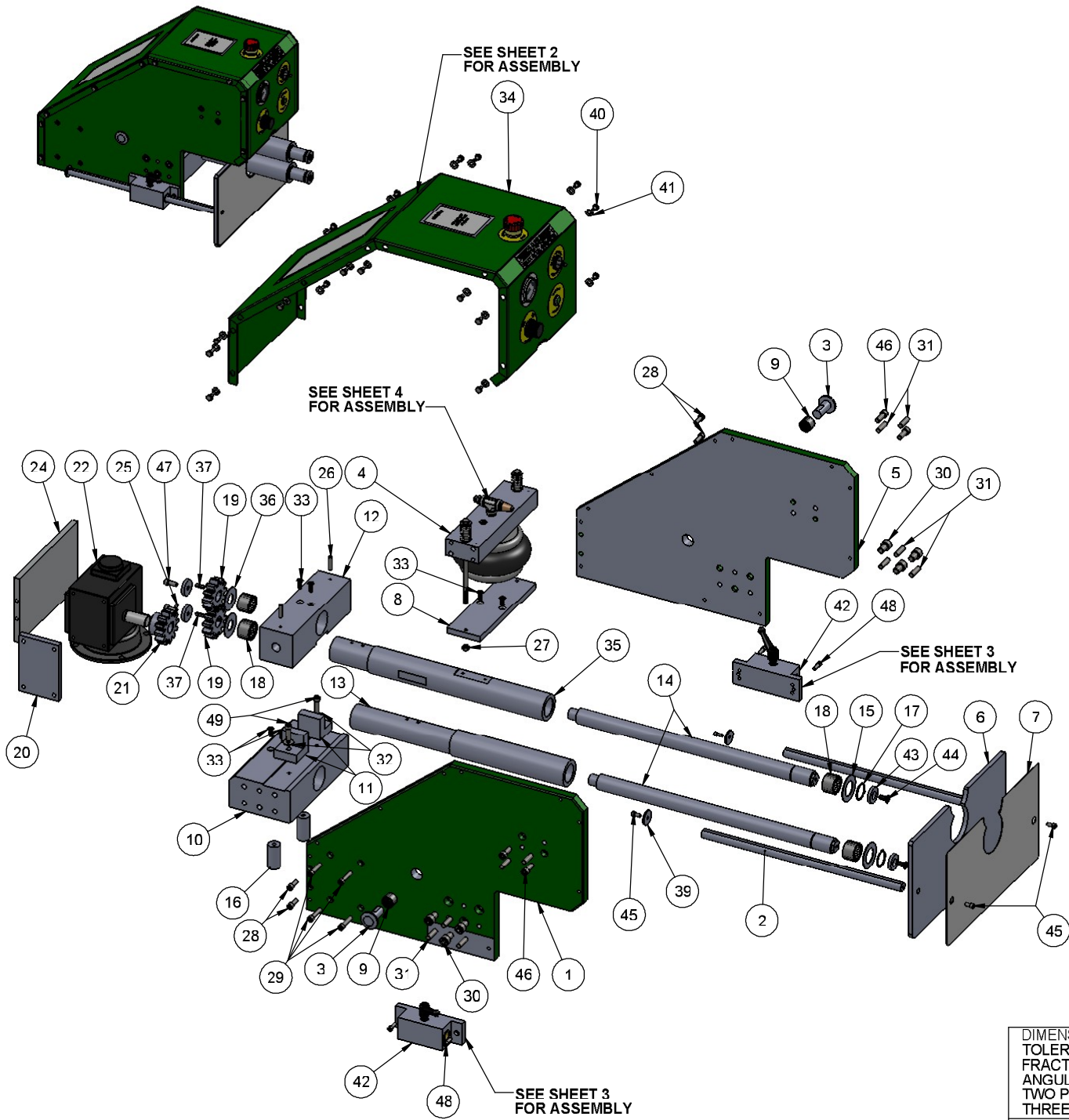


RAMS-2019 ROTARY MACHINE

DIMENSIONS ARE IN INCHES
 TOLERANCES:
 FRACTIONAL $\pm 1/16$
 ANGULAR: MACH \pm BEND \pm
 TWO PLACE DECIMAL ± 01
 THREE PLACE DECIMAL $\pm .005$

THE INFORMATION CONTAINED IN THIS DRAWING IS THE SOLE PROPERTY OF HORIZON SYSTEMS MACHINING. ANY REPRODUCTION IN PART OR AS A WHOLE WITHOUT THE WRITTEN PERMISSION OF HORIZON SYSTEMS MACHINING IS PROHIBITED.

DRAWN		NAME	DATE	HORIZON SYSTEMS MACHINING	
CHECKED	BTB		////11	9121 58TH PLACE KENOSHA, WI 53144 PH: 262-605-1122 FAX: 262-605-1198	
ENG APPR.					
MFG APPR.					
D.A.					
MATERIAL				TITLE: ERROR!Description	
SEE BOM				SIZE	DWGS. NO.
FINISH				C	ROTARY 2019
DO NOT SCALE DRAWING				SCALE: 1:1	SHEET 1 OF 3

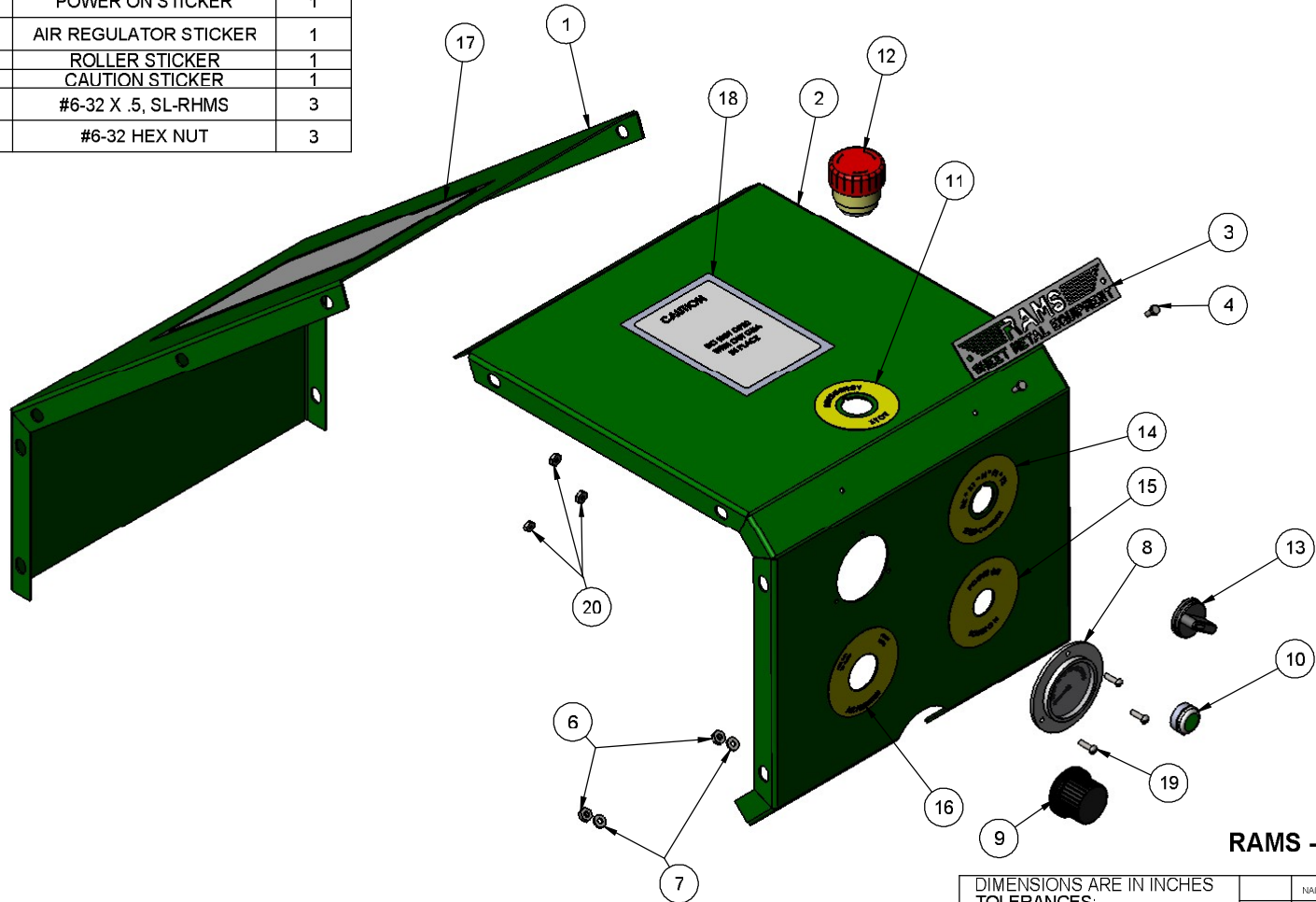
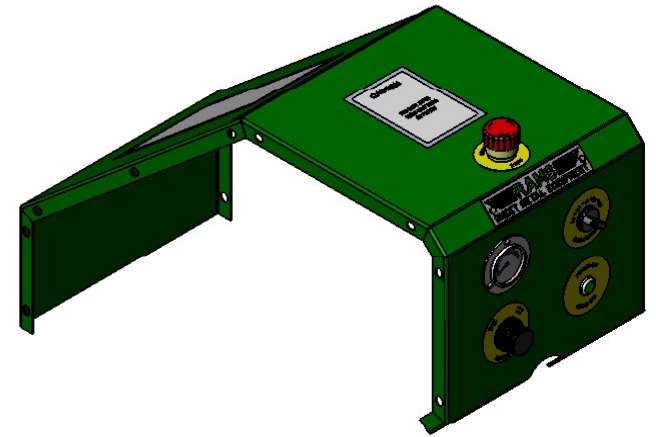


ITEM NO.	PART NUMBER	DESCRIPTION	QTY.
1	2019-10	PLATE-LEFT SIDE	1
2	2019-50	GUIDE BAR	2
3	2019-48	PIN	2
4	BELLOW ASSEM	BELLOW ASSEMBLY	1
5	2019-12	PLATE-RGHT SIDE	1
6	2019-14	PLATE	1
7	2019-14-1	WARE PLATE	1
8	2019-18	PLATE	1
9	B-1212	3/4 X 1 BEARING	2
10	2019-30	LOWER BLOCK	1
11	2019-24	ANGLE SUPPORT	2
12	2019-26	UPPER BLOCK	1
13	TUBE1	TUBE	1
14	SHAFT1	SHAFT	2
15	2019-40	WASHER	2
16	2019-43	STAND BUSHING	2
17	B27.1 - NA1-125	EXTERNAL RETAINING RING	2
18	B-2016	1-1/2 X 1 BEARING	4
19	2019-53	SHAFT GEAR	2
20	2019-16	GEAR REDUCTION PLATE	1
21	2019-54	MOTOR GEAR	1
22	GEAR REDUCER	SPEED CONTROL	1
24	2019-20	BACK PLATE	1
25	SSCUPSKT 0.19-32x0.375-HX-N	10-32 X 3/8, NYLOCK SET SCREW	1
26	SSCUPSKT 0.25-20x1.25-HX-N	1/4-20 X 1-1/4, SET SCREW	2
27	HNUT 0.3125-18-D-N	5/16-18, HEX NUT	2
28	HX-SHCS 0.250-20x0.500x0.500-N	1/4-20 X 1/2, SHCS	4
29	HX-SHCS 0.3125-18x1.5x1.5-N	5/16-18 X 1-1/2, SHCS	4
30	HX-SHCS 0.5-13x0.75x0.75-N	1/2-13 X 3/4, SHCS	6
31	ASME B18.8.2 - 0.375x1.25	DOWEL PINS 3/8 X 1-1/4	10
32	Regular FW 0.3125	5/16 FLATWASHER	2
33	SCHSCREW 0.25-20x0.75x0.75-HX-N	1/4-20 X 3/4, FHCS	6
34	2019-04	TOP COVER ASSEMBLY	1
35	TUBE2	TUBE2	1
36	2019-42	WASHER	2
37	Key B17.1 0.1875x0.1875x.750	3/4 LONG KEY	2
38	2019-44	PLAIN WASHER	2
39	2019-49	GUIDE BAR WASHER	2
40	HFBOLT 0.25-20x0.375x0.375-N	1/4-20 X 3/8, HHCS	18
41	Preferred Narrow FW 0.25	1/4 FLAT WASHER	18
42	GUIDE BAR BLOCK	GUIDE BAR BLOCK ASSEM	2
43	2019-46	C-SUNK WASHER	2
44	SCHSCREW 0.3125-18x0.75x0.75-HX-N	5/16-18 X .75, SHCS	2
45	SHCS, 1/4-20 X 1/2	1/4-20 X 1/2, SHCS	4
46	HX-SHCS 0.375-16x1x1-N	3/8-16 X 1, SHCS	4
47	HX-SHCS 0.3125-18x0.75x0.75-N	5/16-18 X 1-1/4, SHCS	2
48	HX-SHCS 0.25-20x0.75x0.75-N	1/4-20 X 3/4, SHCS	4
49	HX-SHCS 0.3125-18x1.25x1.25-N	5/16-18 X 1-1/4, SHCS	2

RAMS - 2019 ROTARY MACHINE

DIMENSIONS ARE IN INCHES TOLERANCES: FRACTIONAL ± 1/16 ANGULAR: MACH ± BEND ± TWO PLACE DECIMAL ± 01 THREE PLACE DECIMAL ± .005		<table border="1"> <tr><td>NAME</td><td>DATE</td></tr> <tr><td>BTE</td><td>1/8/11</td></tr> <tr><td>CHECKED</td><td></td></tr> <tr><td>ENG APPR.</td><td></td></tr> <tr><td>MFG APPR.</td><td></td></tr> <tr><td>D.A.</td><td></td></tr> </table>	NAME	DATE	BTE	1/8/11	CHECKED		ENG APPR.		MFG APPR.		D.A.		HORIZON SYSTEMS MACHINING 9121 58TH PLACE KENOSHA, WI 53144 PH: 262-605-1122 FAX: 262-605-1198			
NAME	DATE																	
BTE	1/8/11																	
CHECKED																		
ENG APPR.																		
MFG APPR.																		
D.A.																		
THE INFORMATION CONTAINED IN THIS DRAWING IS THE SOLE PROPERTY OF HORIZON SYSTEMS MACHINING. ANY REPRODUCTION IN PART OR AS A WHOLE WITHOUT THE WRITTEN PERMISSION OF HORIZON SYSTEMS MACHINING IS PROHIBITED.	<table border="1"> <tr><td>MATERIAL</td><td>SEE BOM</td></tr> <tr><td>FINISH</td><td>NONE</td></tr> <tr><td>DO NOT SCALE DRAWING</td><td></td></tr> </table>	MATERIAL	SEE BOM	FINISH	NONE	DO NOT SCALE DRAWING		<table border="1"> <tr><td>TITLE</td><td>ROTARY 2019 TOP SECTION</td></tr> <tr><td>SIZE</td><td>DWGS. NO.</td></tr> <tr><td>C</td><td>ROTARY 2019 TOP</td></tr> <tr><td>SCALE</td><td>1:1</td></tr> <tr><td>SHEET</td><td>1 OF 2</td></tr> </table>	TITLE	ROTARY 2019 TOP SECTION	SIZE	DWGS. NO.	C	ROTARY 2019 TOP	SCALE	1:1	SHEET	1 OF 2
MATERIAL	SEE BOM																	
FINISH	NONE																	
DO NOT SCALE DRAWING																		
TITLE	ROTARY 2019 TOP SECTION																	
SIZE	DWGS. NO.																	
C	ROTARY 2019 TOP																	
SCALE	1:1																	
SHEET	1 OF 2																	

ITEM NO.	PART NUMBER	DESCRIPTION	QTY.
1	2019-01	COVER	1
2	2019-02	COVER	1
3	SL-1720	SMALL RAMS LOGO	1
4	PL-RHMS 0.138-32x0.375x0.375-N	#6-32 X 3/8, HHCS	2
6	MSHXNUT 0.164-32-S-N	#6-32 HEX NUT	2
7	Preferred Narrow FW 0.138	#6 FLAT WASHER	2
8	AIR GUAGE	AIR PRESSURE GUAGE	1
9	AIR REGULATOR KNOB	AIR REGULATOR	1
10	POWER ON BUTTON	POWER BUTTON	1
11	EMERGENCY STOP	EMERGENCY STOP STICKER	1
12	STOP BUTTON	STOP BUTTON	1
13	SPEED CONTROL	SPEED CONTROL	1
14	SPEED CONTROL STICKER	SPEED CONTROL STICKER	1
15	POWER ON STICKER	POWER ON STICKER	1
16	AIR REGULATOR STICKER	AIR REGULATOR STICKER	1
17	ROLLER STICKER	ROLLER STICKER	1
18	CAUTION	CAUTION STICKER	1
19	SL-RHMS 0.138-32x0.5x0.5-N	#6-32 X .5, SL-RHMS	3
20	MSHXNUT 0.138-32-S-N	#6-32 HEX NUT	3



RAMS - 2019 ROTARY MACHINE

DIMENSIONS ARE IN INCHES
 TOLERANCES:
 FRACTIONAL $\pm 1/16$
 ANGULAR: MACH \pm BEND \pm
 TWO PLACE DECIMAL ± 01
 THREE PLACE DECIMAL $\pm .005$

	NAME	DATE
DRAWN:	BTB	1/16/1
CHECKED:		
ENG. APPR.		
MFG APPR.		
D.A.		

HORIZON SYSTEMS MACHINING
 9121 58TH PLACE
 KENOSHA, WI 53144
 PH: 262-605-1122
 FAX: 262-605-1198

THE INFORMATION CONTAINED IN THIS DRAWING IS THE SOLE PROPERTY OF HORIZON SYSTEMS MACHINING. ANY REPRODUCTION IN PART OR AS A WHOLE WITHOUT THE WRITTEN PERMISSION OF HORIZON SYSTEMS MACHINING IS PROHIBITED.

MATERIAL	SEE BOM
FINISH	NONE
DO NOT SCALE DRAWING	

TITLE:	TOP COVER ASSEMBLY	
SIZE	DWG. NO.	RFV
C	ROTARY 2019 TOP	
SCALE: 1:1	SHEET 2 OF 4	