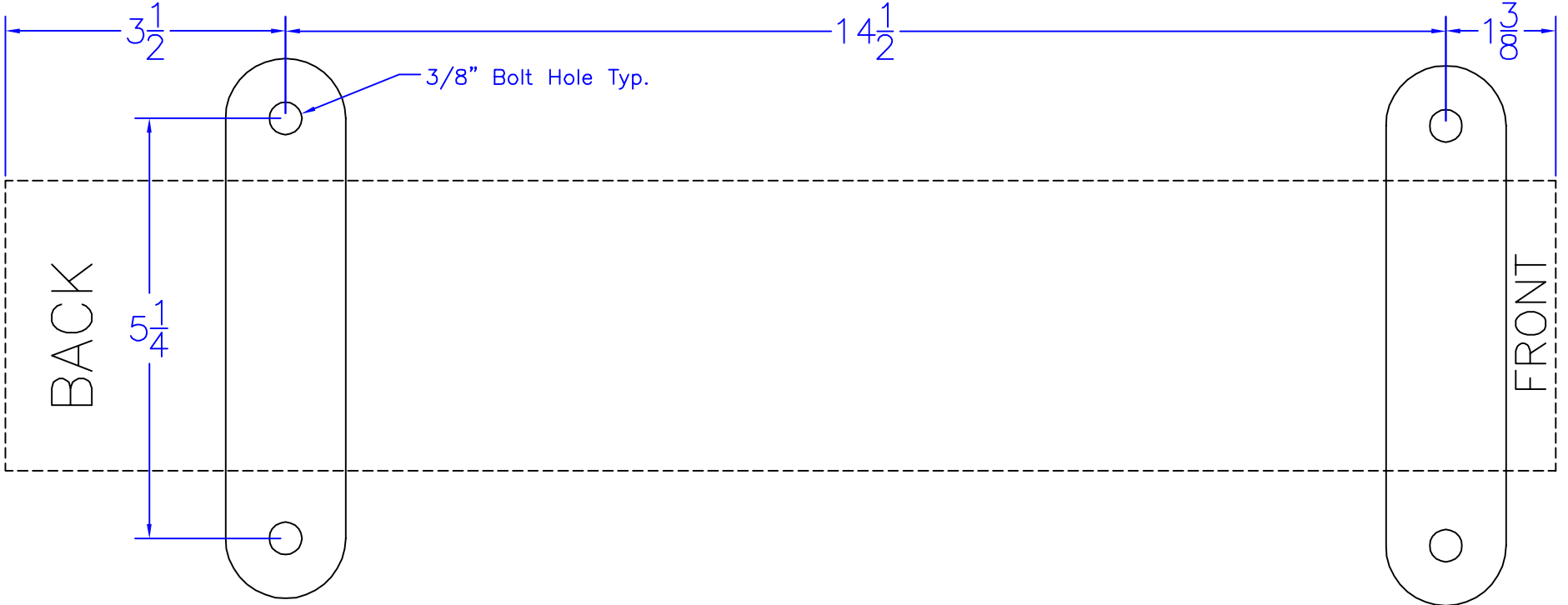


REVISION	DATE	BY	DESCRIPTION



MB MITTLER BROS.
MACHINE & TOOL

0

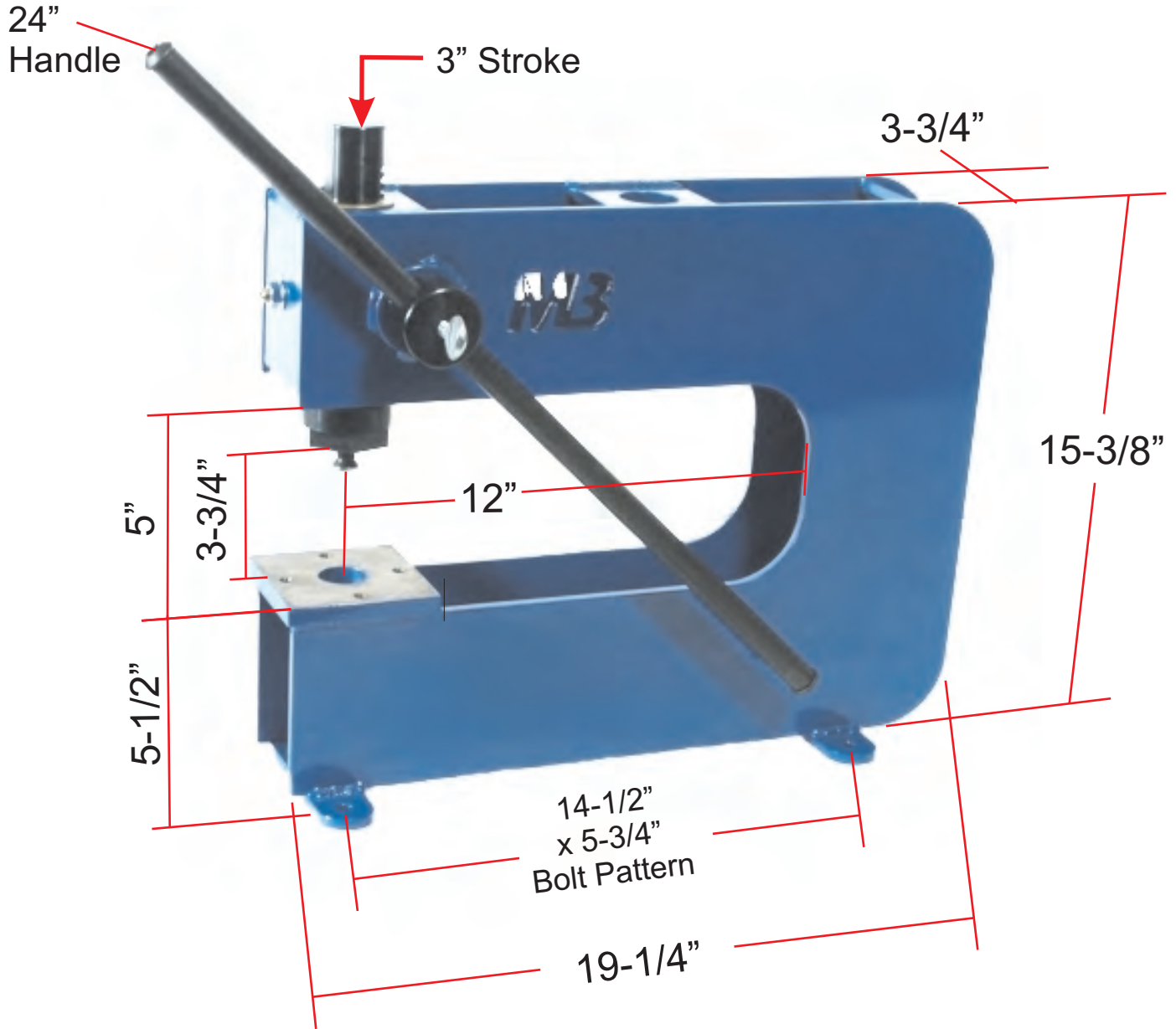
.X	= ± .015
.XX	= ± .010
.XXX	= ± .005
FRAC.	= ± .015

Bench Press	
TITLE: Bolt Down Pattern	
DATE: 4/16/04	DR. BY: JEP
SHEET SIZE: A	UNITS: INCHES
SCALE: 1/2=1	NO.

NO. REQ'D:	MATL.
CNC PROG. NO.	HT.:

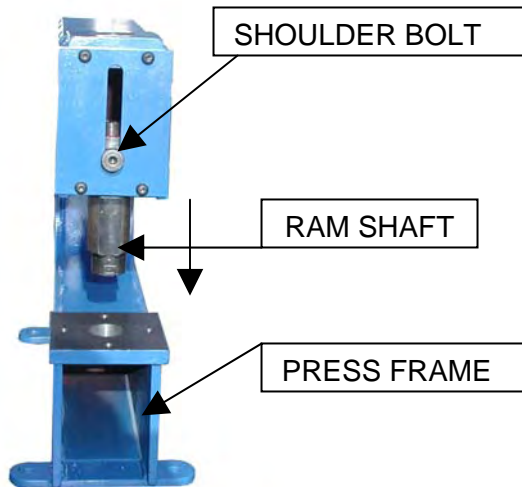
2200

Manual Bench Press Dimensions



ASSEMBLY INSTRUCTIONS FOR HYDRAULIC PRESS

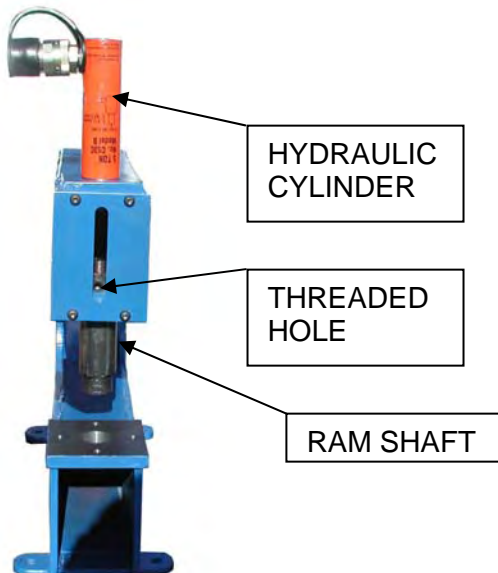
STEP #1 REMOVE SHOULDER BOLT AND DROP RAM SHAFT OUT THE BOTTOM.



STEP #2 THREAD HYD. CYL. ONTO PRESS FRAME TIGHTEN SECURELY.



STEP #3 INSTALL RAM SHAFT TO HYDRAULIC CYLINDER & TIGHTEN SECURELY. BE SURE THREADED HOLE FOR SHOULDER BOLT IS VISIBLE IN THE SLOT.



STEP #4 INSTALL SHOULDER BOLT & TIGHTEN SECURELY.

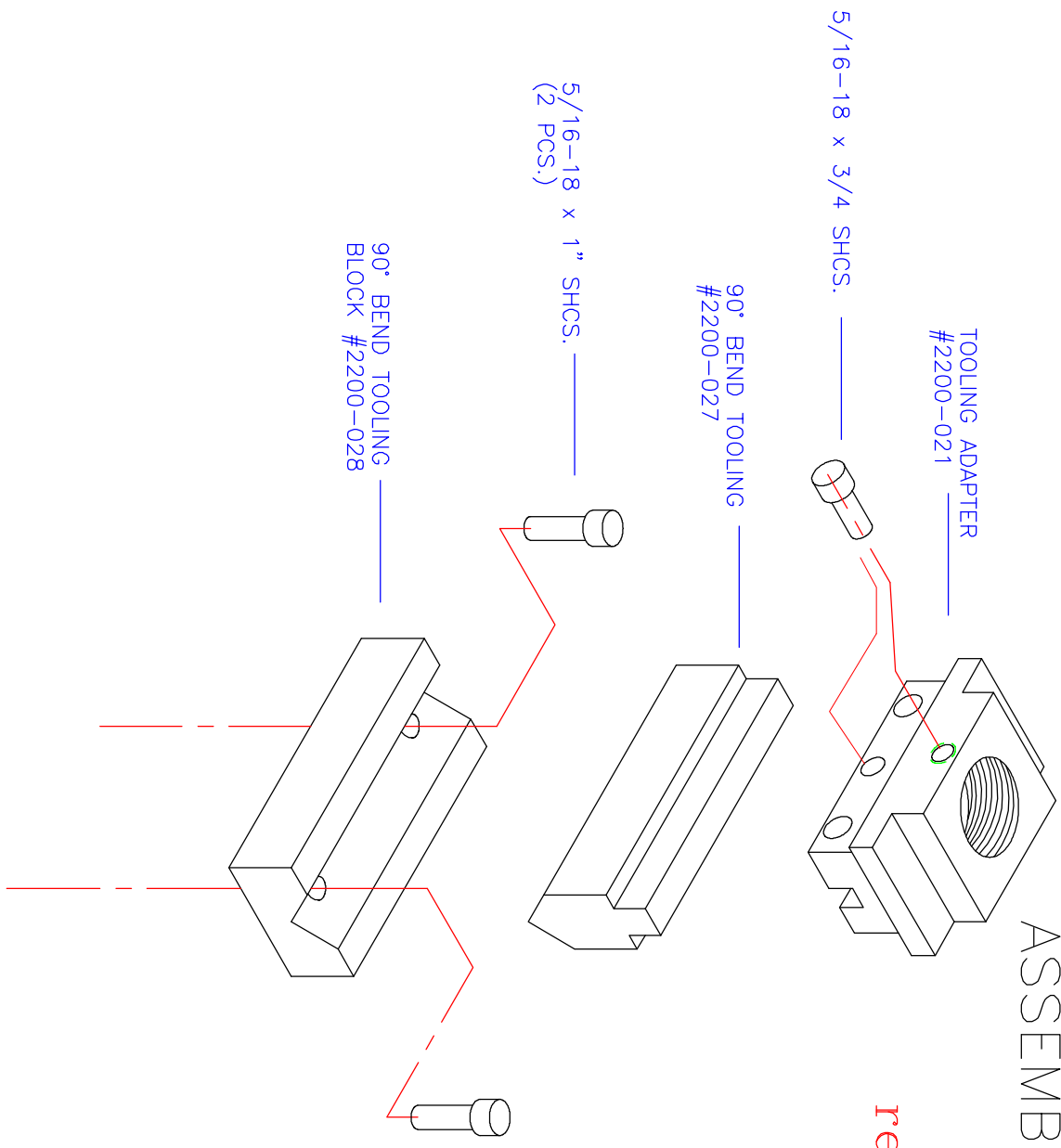


STEP #5 INSTALL PRESS TOOLING TO SUIT. DO NOT OVER POWER PRESS AS DAMAGE COULD OCCUR TO PRESS, AND / OR TOOLING AND CAUSE **PERSONAL INJURY!**

BENCH PRESS
90° BEND TOOLING
ASSEMBLY #2200-90DA

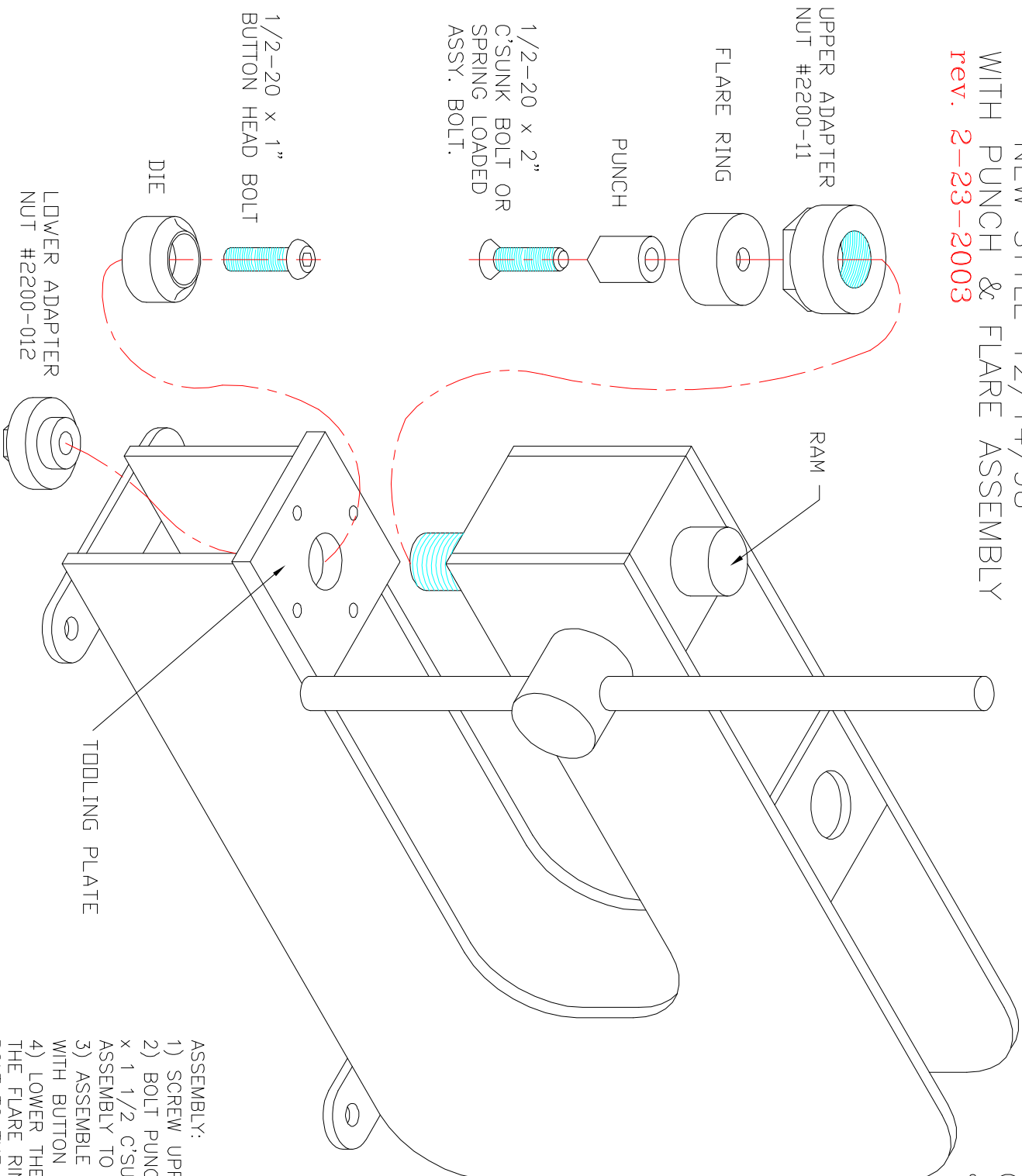
1/12/99

rev. 3-25-2004



PRESS
 NEW STYLE 12/14/98
 WITH PUNCH & FLARE ASSEMBLY
 rev. 2-23-2003

MAXIMUM
 CAPACITY Ø3 PUNCH
 & FLARE 16 GAGE STEEL



- SAFETY!**
 GOOD JUDGMENT AND A SAFE ATTITUDE SHOULD BE APPLIED AT ALL TIMES
- * KEEP ALL BODY PARTS AND FOREIGN OBJECTS OUT OF PUNCH AND RAM AREA, WHILE IN OPERATION.
 - * ALWAYS WEAR SAFETY GLASS WHILE OPERATING MACHINE.
 - * DO NOT OPERATE UNDER THE INFLUENCE OF DRUGS & ALCOHOL.

NEW STYLE PUNCH & FLARES HAVE TAP ON FEMALE END (FLARE RING) IF CUSTOMER HAS OLD & NEW STYLE PUNCH & FLARE & PRESS WITH OLD STYLE. THEN THEY NEED:

- 1) NEW UPPER ADAPTER NUT #2200-011
- 2) NEW 1/2-20 x 2" C' SUNK BOLT
- 3) NEW 1/2-20 x 1" BUTTON HEAD BOLT.

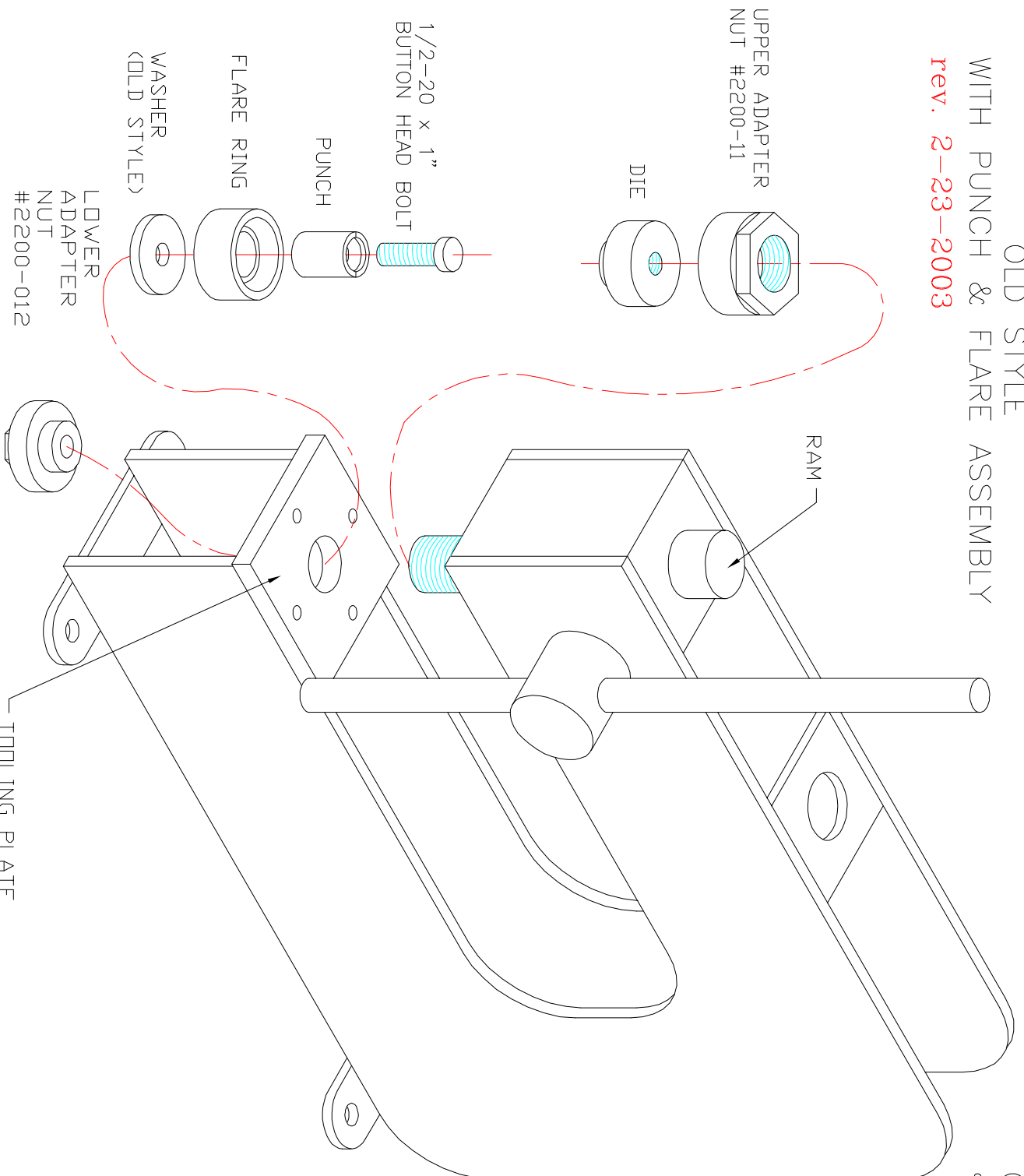
\$25.00 FOR ALL 3 ITEMS. ADAPTS NEW STYLE PUNCHES TO PRESS.

- ASSEMBLY:**
- 1) SCREW UPPER ADAPTER NUT ONTO RAM.
 - 2) BOLT PUNCH TO FLARE RING WITH 1/2-20 x 1 1/2 C'SUNK BOLT THEN THREAD ASSEMBLY TO UPPER NUT.
 - 3) ASSEMBLE DIE AND LOWER NUT ADAPTER WITH BUTTON HEAD BOLT. (AS SHOWN)
 - 4) LOWER THE RAM TO ALIGN THE DIE AND THE FLARE RING. BEFORE TIGHTENING THE BOLT TO THE LOWER ADAPTER NUT.

THANK YOU FOR PURCHASING MITTLER BROS. EQUIPMENT

PRESS
 OLD STYLE
 WITH PUNCH & FLARE ASSEMBLY

rev. 2-23-2003



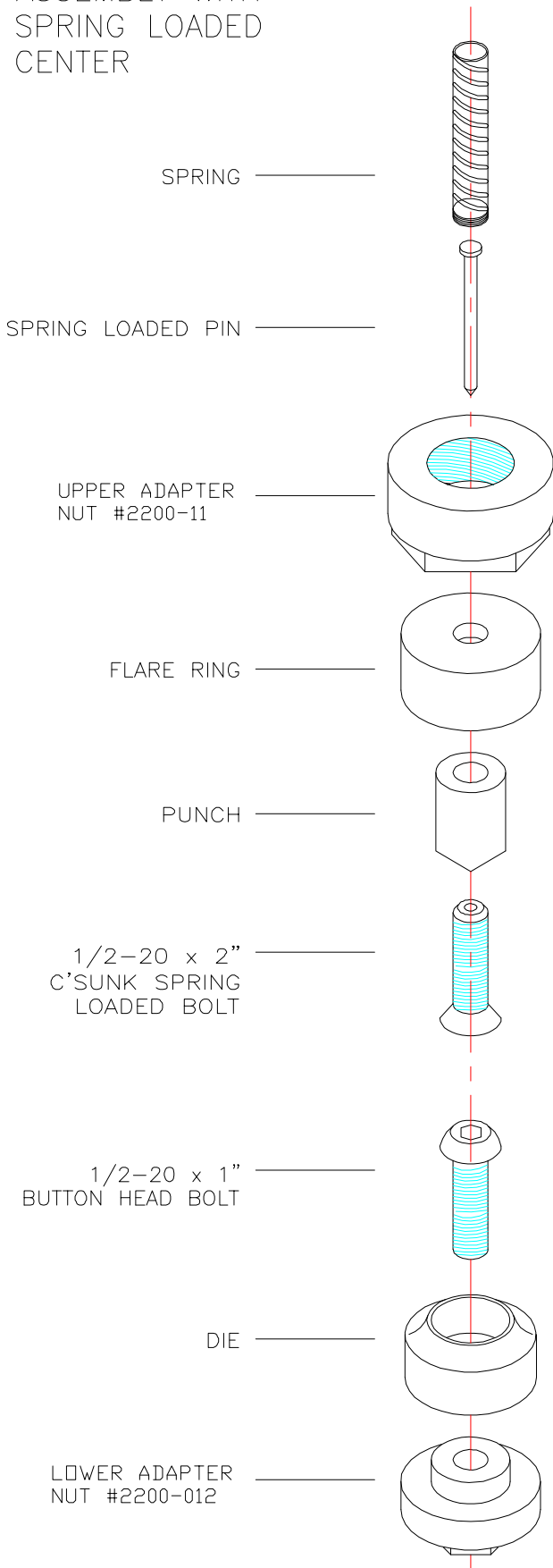
MAXIMUM
 CAPACITY Ø3 PUNCH
 & FLARE 16 GAGE STEEL

SAFETY!

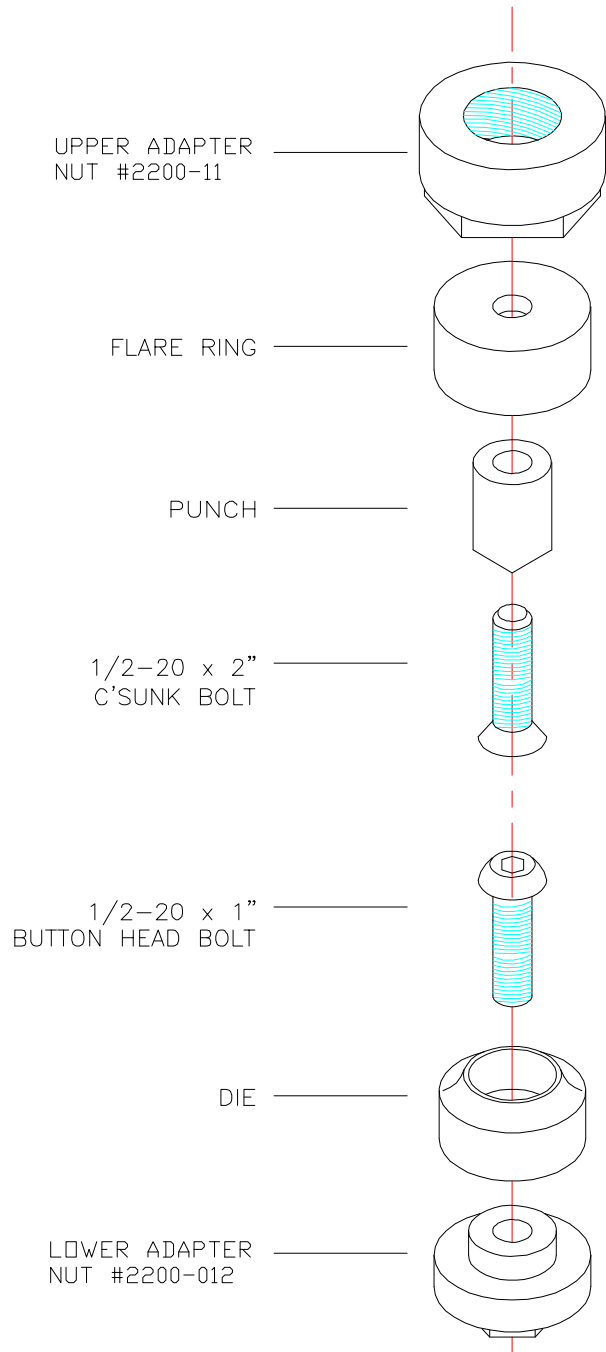
- GOOD JUDGMENT AND A SAFE ATTITUDE SHOULD BE APPLIED AT ALL TIMES
- * KEEP ALL BODY PARTS AND FOREIGN OBJECTS OUT OF PUNCH AND RAM AREA, WHILE IN OPERATION.
- * ALWAYS WEAR SAFETY GLASS WHILE OPERATING MACHINE.
- * DO NOT OPERATE UNDER THE INFLUENCE OF DRUGS & ALCOHOL.

NEW STYLE PUNCH & FLARES HAVE TAP ON FEMALE END (FLARE RING) IF CUSTOMER HAS OLD & NEW STYLE PUNCH & FLARE & PRESS WITH OLD STYLE. THEN THEY NEED:
 1) NEW UPPER ADAPTER NUT #2200-011
 2) NEW 1/2-20 x 2" C' SUNK BOLT
 3) NEW 1/2-20 x 1" BUTTON HEAD BOLT.
 \$25.00 FOR ALL 3 ITEMS.
 ADAPTS NEW STYLE PUNCHES TO PRESS.

PUNCH AND FLARE
ASSEMBLY WITH
SPRING LOADED
CENTER

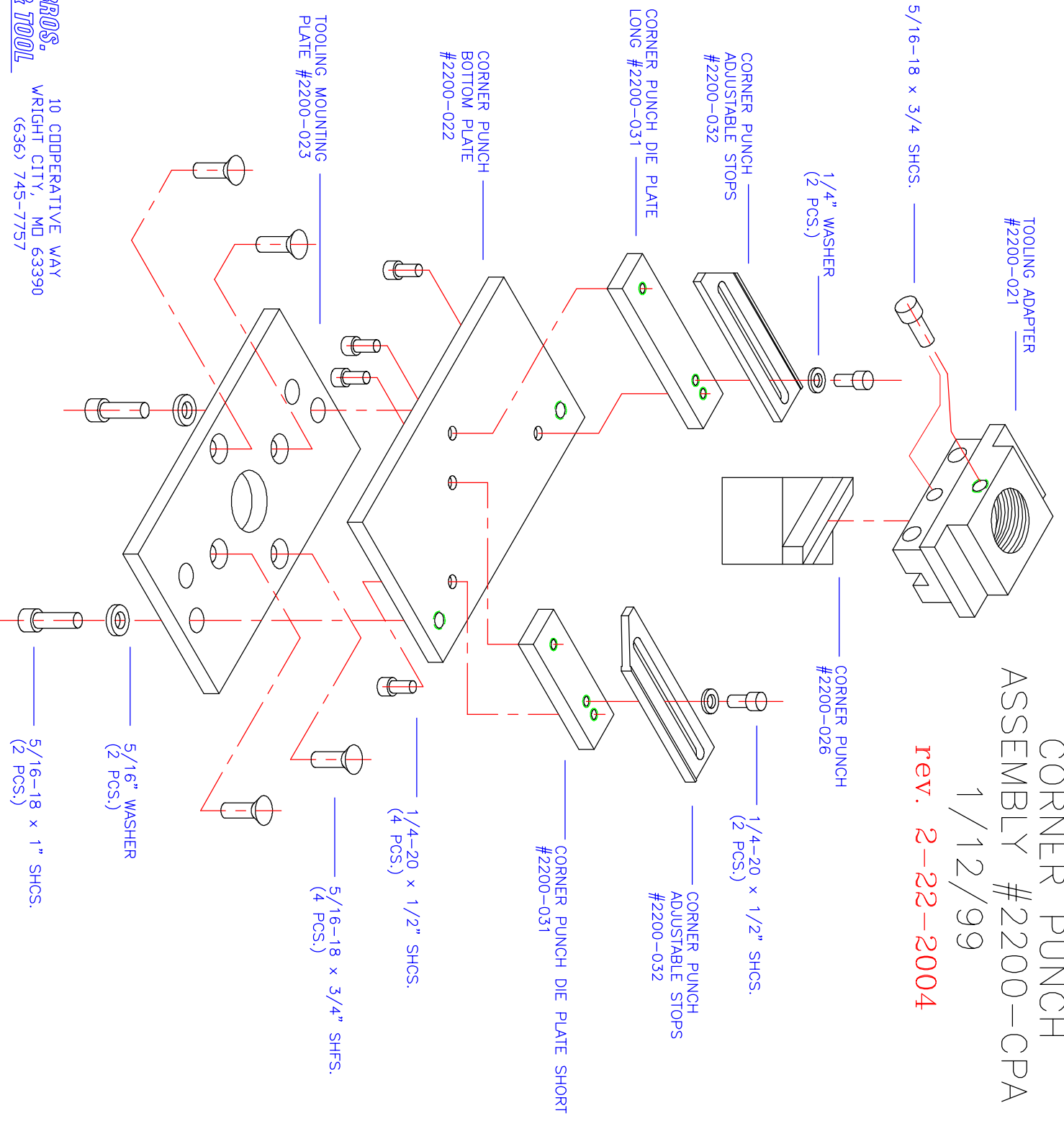


PUNCH AND FLARE
ASSEMBLY WITH OUT
SPRING LOADED
CENTER



BENCH PRESS
 CORNER PUNCH
 ASSEMBLY #2200-CPA
 1/12/99

rev. 2-22-2004



TOOLING ADAPTER
 #2200-021

5/16-18 x 3/4 SHCS.

1/4" WASHER
 (2 PCS.)

CORNER PUNCH
 ADJUSTABLE STOPS
 #2200-032

CORNER PUNCH DIE PLATE
 LONG #2200-031

CORNER PUNCH
 #2200-026

1/4-20 x 1/2" SHCS.
 (2 PCS.)

CORNER PUNCH
 ADJUSTABLE STOPS
 #2200-032

CORNER PUNCH DIE PLATE SHORT
 #2200-031

1/4-20 x 1/2" SHCS.
 (4 PCS.)

CORNER PUNCH
 BOTTOM PLATE
 #2200-022

5/16-18 x 3/4" SHFS.
 (4 PCS.)

TOOLING MOUNTING
 PLATE #2200-023

5/16" WASHER
 (2 PCS.)

5/16-18 x 1" SHCS.
 (2 PCS.)

BENCH PRESS HOLE PUNCH ASSEMBLY

1/12/99

rev. 2-22-2004

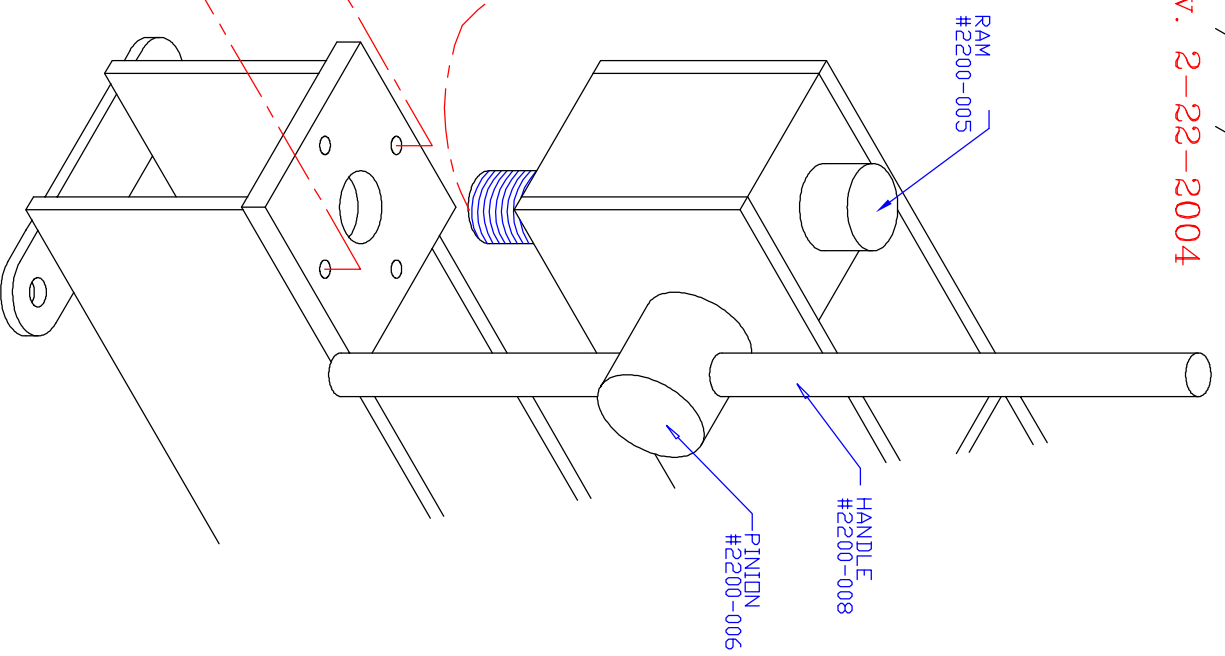
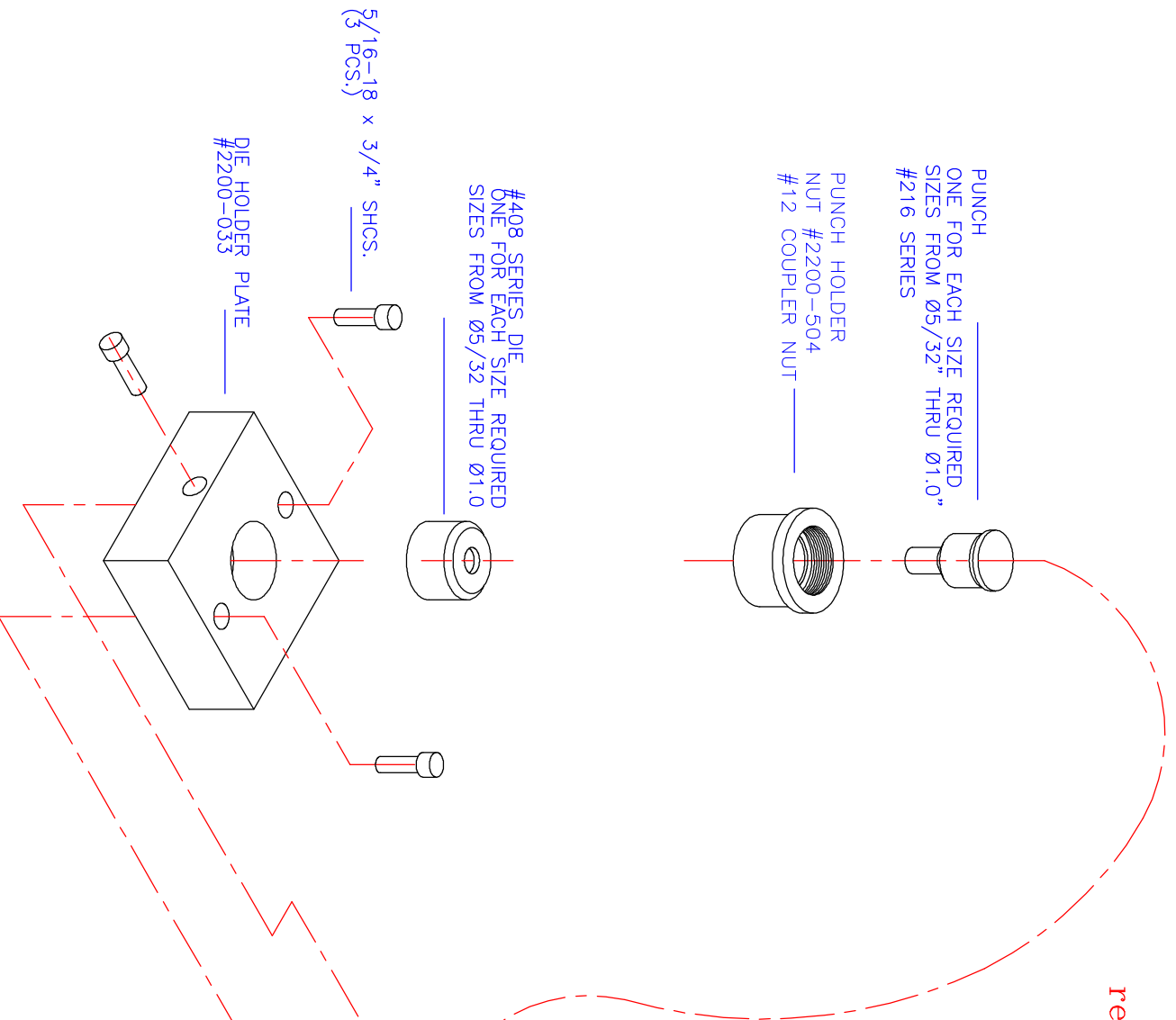
PUNCH
ONE FOR EACH SIZE REQUIRED.
SIZES FROM Ø5/32" THRU Ø1.0"
#216 SERIES

PUNCH HOLDER
NUT #2200-504
#12 COUPLER NUT

#408 SERIES DIE
ONE FOR EACH SIZE REQUIRED
SIZES FROM Ø5/32 THRU Ø1.0

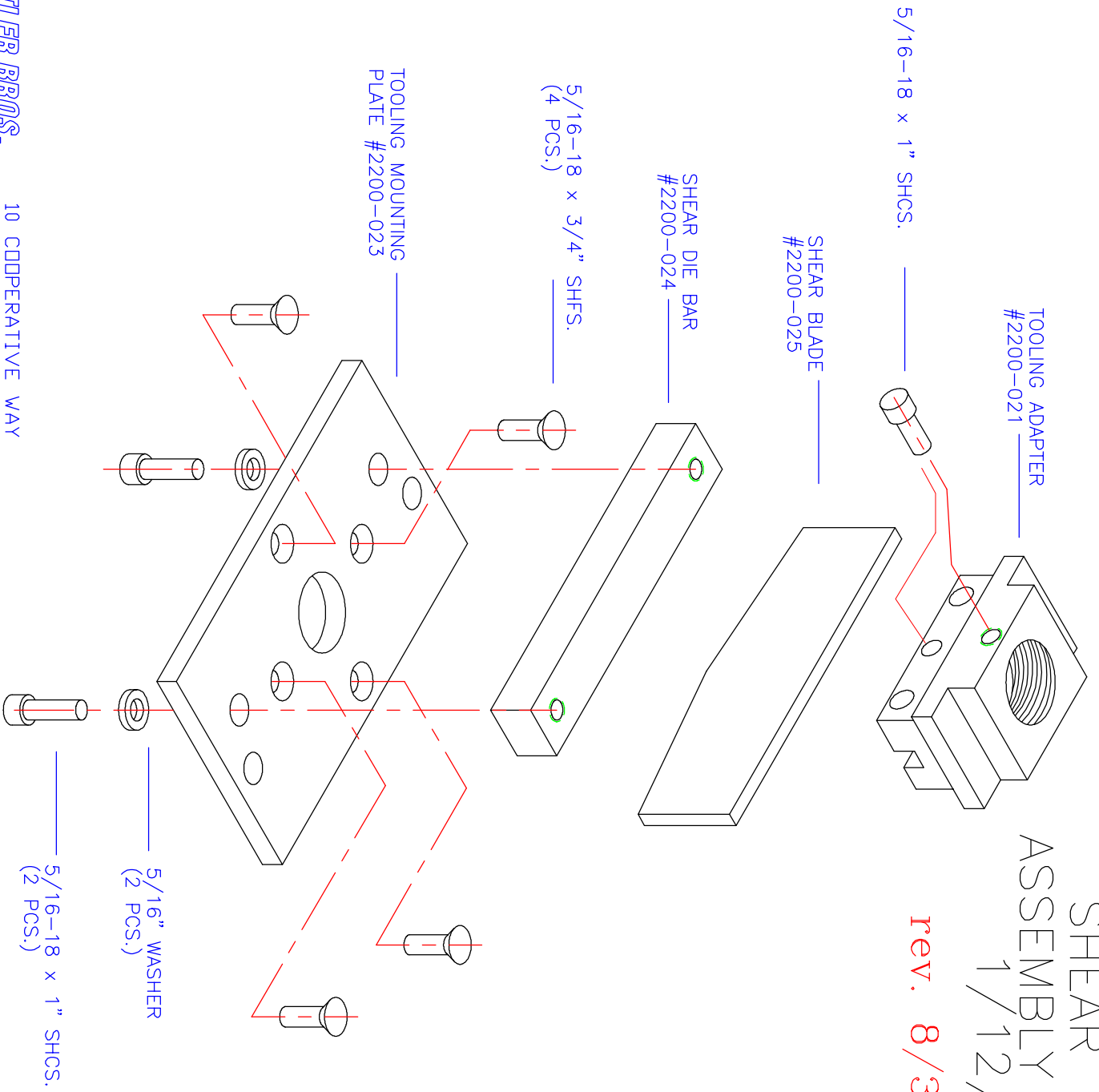
5/16-18 x 3/4" SHCS.
(3 PCS.)

DIE HOLDER PLATE
#2200-033



BENCH PRESS
SHEAR TOOLING
ASSEMBLY #22200-SA
1/12/99

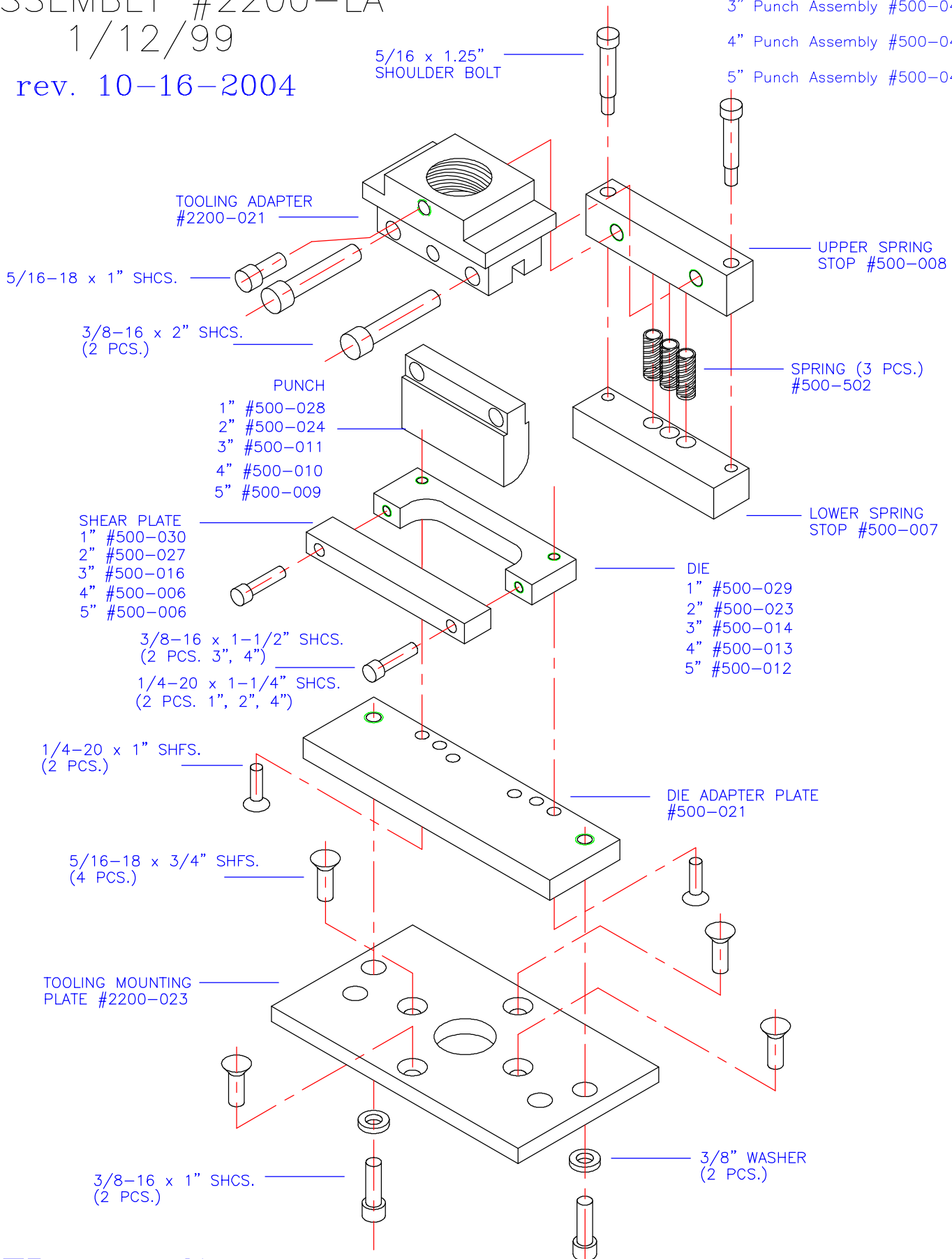
rev. 8/30/04



BENCH PRESS LOUVER TOOLING ASSEMBLY #2200-LA 1/12/99

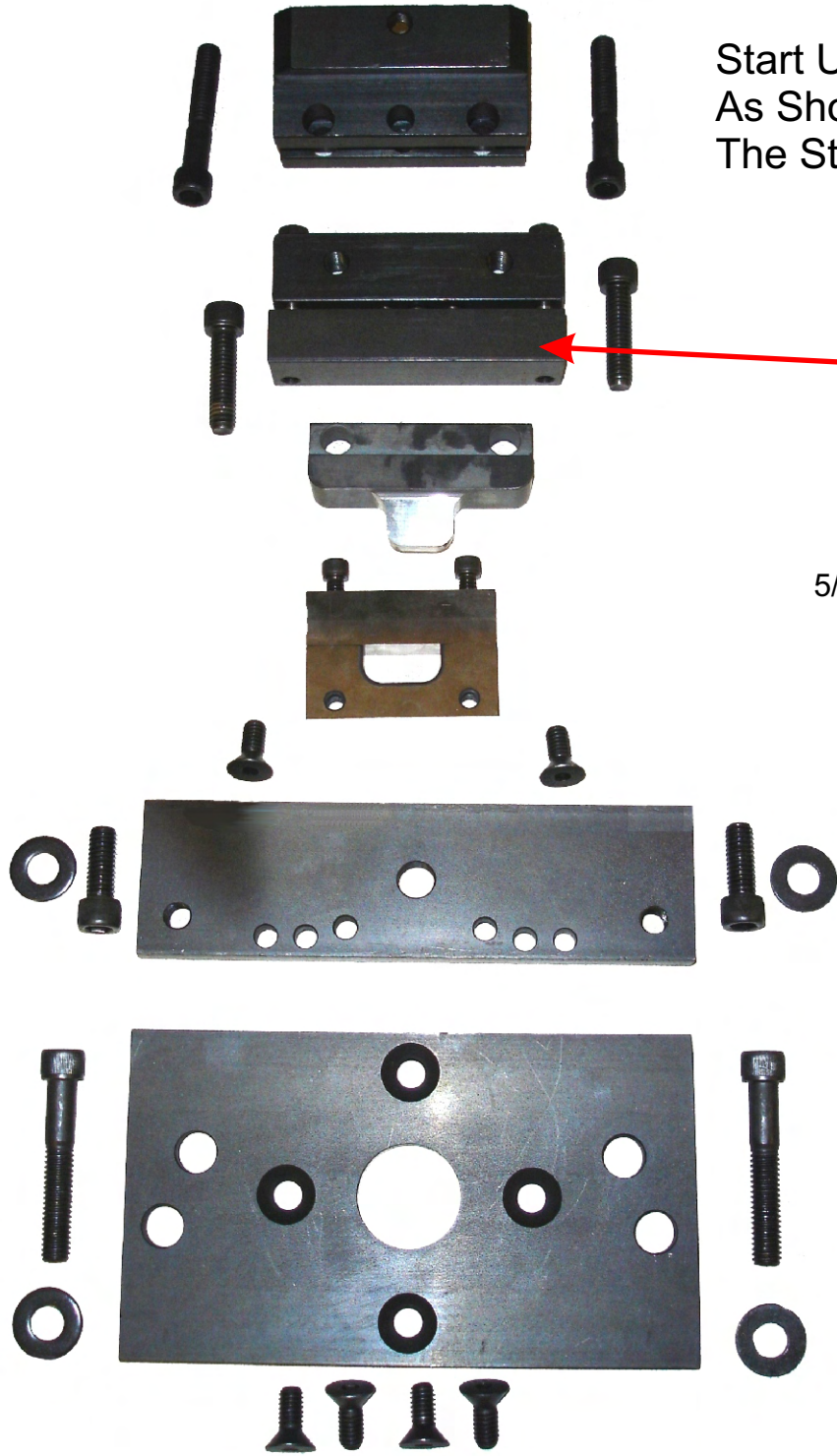
rev. 10-16-2004

- 1" Punch Assembly #500-041
- 2" Punch Assembly #500-042
- 3" Punch Assembly #500-043
- 4" Punch Assembly #500-044
- 5" Punch Assembly #500-045



Start Up Louver Punch Kits

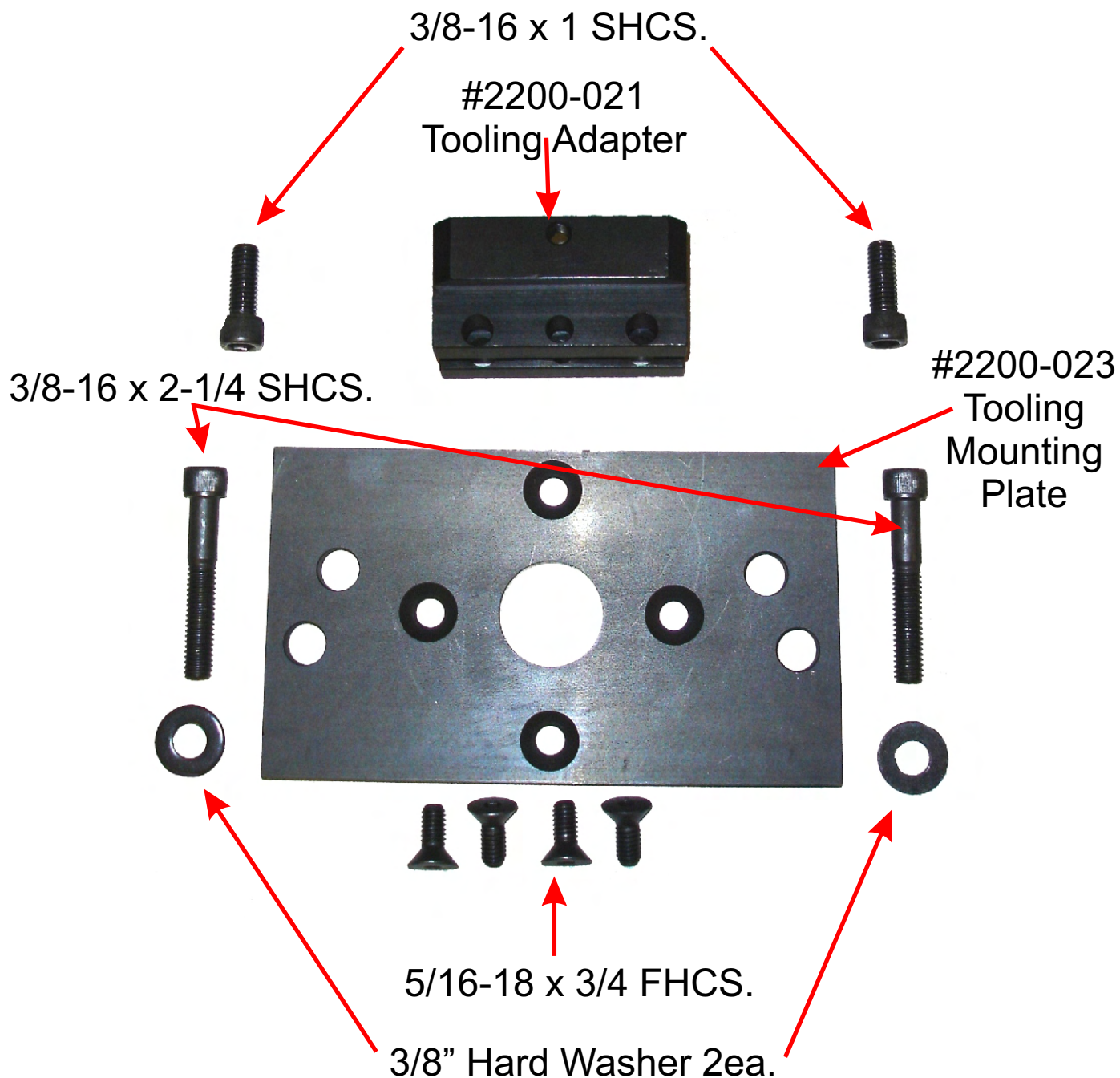
- #2200-LA-01 1" Kit
- #2200-LA-02 2" Kit
- #2200-LA-03 3" Kit
- #2200-LA-04 4" Kit
- #2200-LA-05 5" Kit



Start Up Kits Include All Parts As Shown on Pages 2 & 3 Plus The Stripper Assm. Shown Here.

#500-050
Stripper Assy.
consisting of:
#500-008 Upper Block
#500-007 Lower Block
#500-502 Spring 3ea.
5/16 x1-1/4 Shoulder Bolt 2ea.

Bench Press Tooling Adapter Kit #2200.TA



Bench Press

Louver Punch Assemblies

- #500-041 1" Assy.** **#500-042 2" Assy.**
- #500-043 3" Assy.** **#500-044 4" Assy.**
- #500-45 5" Assy.**

- #500-029 1" Die
- #500-023 2" Die
- #500-014 3" Die
- #500-013 4" Die
- #500-012 5" Die

- #500-028 1" Punch
- #500-024 2" Punch
- #500-011 3" Punch
- #500-010 4" Punch
- #500-009 5" Punch

- #500-030 1" Shear Plate
- #500-027 2" Shear Plate
- #500-016 3" Shear Plate
- #500-006 4"/ 5" Shear Plate
- #500-006 4"/ 5" Shear Plate

3/8-16 x 2-1/4 SHCS 2ea.



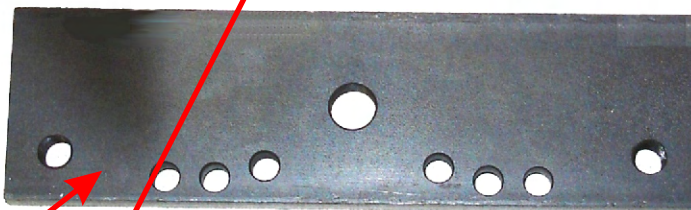
5/16-18 x 3/4 FHCS. 2ea.
Not With 4" & 5"



3/8-16 x 1 2ea.



1/4-20 x 1-1/4 SHCS 2ea.
Not with 4" & 5"



Die Adapter Plate
#500-021
Not with 4" & 5"



3/8" Hard Washer 2ea.
Not With 4" & 5"

- #500-061 1" Urethane Insert (not shown)
- #500-062 2" Urethane Insert (not shown)
- #500-063 3" Urethane Insert (not shown)
- #500-064 4" Urethane Insert (not shown)
- #500-065 5" Urethane Insert (not shown)



3/8-16 x 1-1/2 SHCS 2ea.
4" & 5" Only