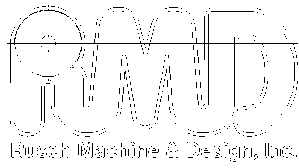
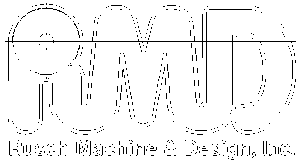


# **OPERATING MANUAL FOR THE MODEL #PS-16 SHRINKER/STRETCHER**





<b>1) IMPORTANT INFORMATION AND CONTACTS</b>	<b>3</b>
<b>2) INTRODUCTION</b>	<b>4</b>
<b>3) SAFETY</b>	<b>4</b>
a) <i>Safety Guide</i>	4
b) <i>Safety Precautions</i>	4
<b>4) UNPACKING</b>	<b>5</b>
<b>5) POWER REQUIREMENTS AND CAPACITY</b>	<b>5</b>
<b>6) INSTALLING</b>	<b>5</b>
<b>7) WARRANTY</b>	<b>6</b>
a) <i>Coverage</i>	6
b) <i>Exclusions</i>	6
c) <i>Conditions</i>	6
d) <i>Extended Parts Warranty</i>	6



## 1) IMPORTANT INFORMATION AND CONTACTS

### Machine Information

Model #PS-16  
110VAC, Single Phase 10 Amp 60Hz  
400 lbs/ 181 kg  
Maximum Sound level < 70 db

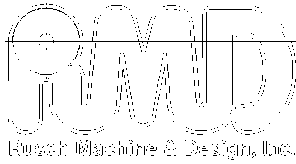


**Trick-Tools.com**

80 Truman Road  
Pella, IA 50219

Phone: 1-877-VAN-SANT  
E-mail: [sales@trick-tools.com](mailto:sales@trick-tools.com)





## 2) INTRODUCTION

- i) You have made a practical choice in purchasing an RMD, INC. Model #PS-16 Power Shrinker. It has been carefully built of high quality materials and designed to give many years of efficient service. The simplicity of design and minimum effort required to operate the machine contributes towards meeting schedules and producing greater profits.
  
- ii) The Model #PS-16 Power Shrinker is a ruggedly designed machine that comes standard with reversible shrinker and stretcher jaws.

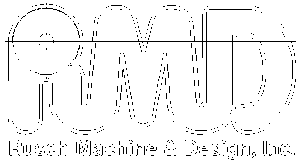
## 3) SAFETY

### a) Safety Guide

- i) Read this manual before operating the machine. Carefully read the safety guide for doing safety work.
- ii) Keep this manual handy for answers to any questions you may have. Store it near the machine to be usable in the future.
- iii) Operators and maintenance workers shall not depend on only the safety equipment. They shall familiarize and understand the machine before operating and maintaining the machine.

### b) Safety Precautions

- i) Before being engaged in operating this machine, please read and understand the entire instruction manual, and follow all the warning signs labeled on the machine. Do not disfigure or remove.
- ii) During operation, please do not expose any of your body parts near to the moving parts of the machine.
- iii) Never touch workpiece, tooling or spindle unless the spindle stops completely.
- iv) Before operation, make sure all the guards are in place.
- v) Before starting the machine, make sure that all workpiece and die tooling are properly installed to avoid accidents.
- vi) Operators should wear safety glasses, and remove rings, watches, jewelry and loose fitting clothing for their own protection while operating the machine.
- vii) Never touch switches or controls with wet hands.
- viii) Cut off the power immediately if there is electricity power breakdown.
- ix) Before proceeding with the daily operation, the machine should be warmed up for approximately one minute.
- x) There must be no obstacles to obstruct the operator while in the working area
- xi) If machine is going to be left unattended, the operator should turn power off until the beginning of the next task.
- xii) Please do not put any tools or measuring devices on the moving parts of the machine, or on the control panel.



xiii) Identify and make sure of the function of the switches or buttons on the control panel, and then proceed to operate them.

#### **4) UNPACKING**

- i) After receiving machine, visually inspect for damage. Any damage should be reported immediately to RMD, Inc. before power is applied to machine.
- ii) The machine weight is approximately 400 pounds. Extreme care should be taken when unloading from skid. A forklift is the best way to remove machine from the skid.

#### **5) POWER REQUIREMENTS AND CAPACITY**

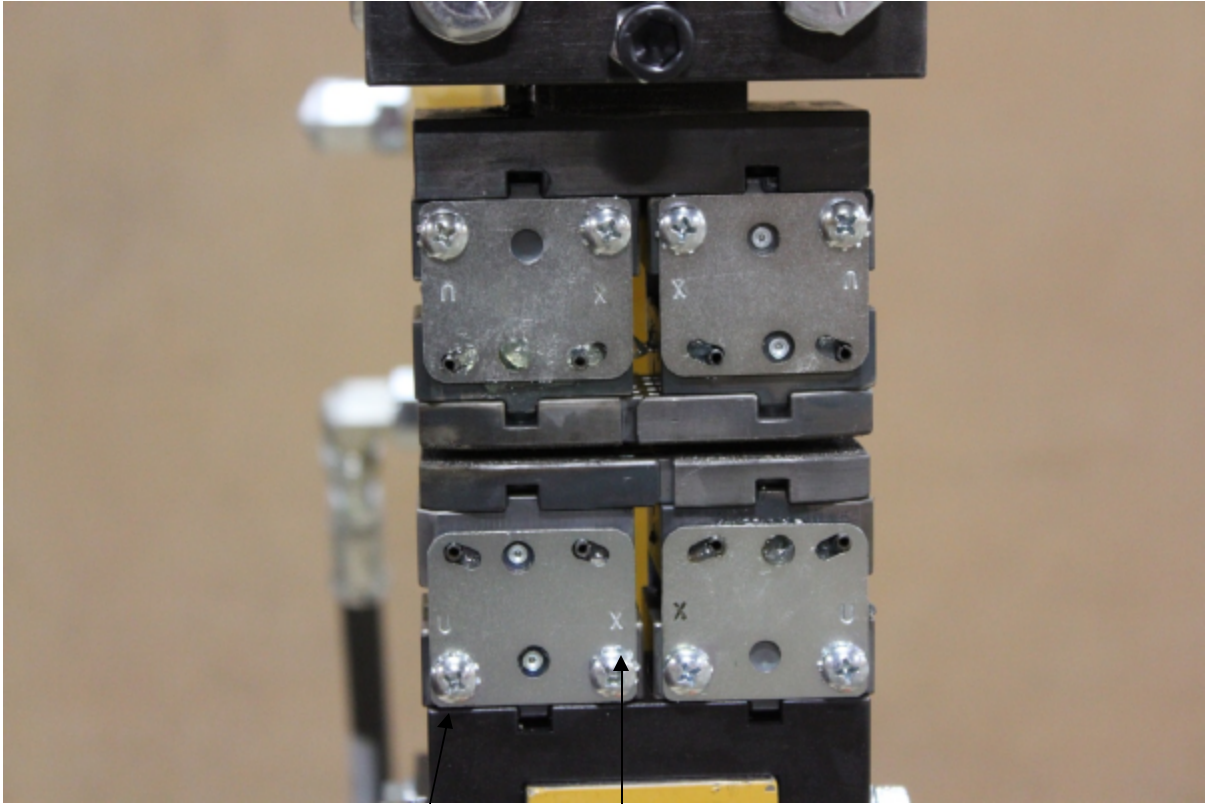
AC Voltage	15 Amps	115v (Single Phase)
Frequency	60 Hz	

The power source cable should be protected by fuse or breaker, and dedicated to this machine only.

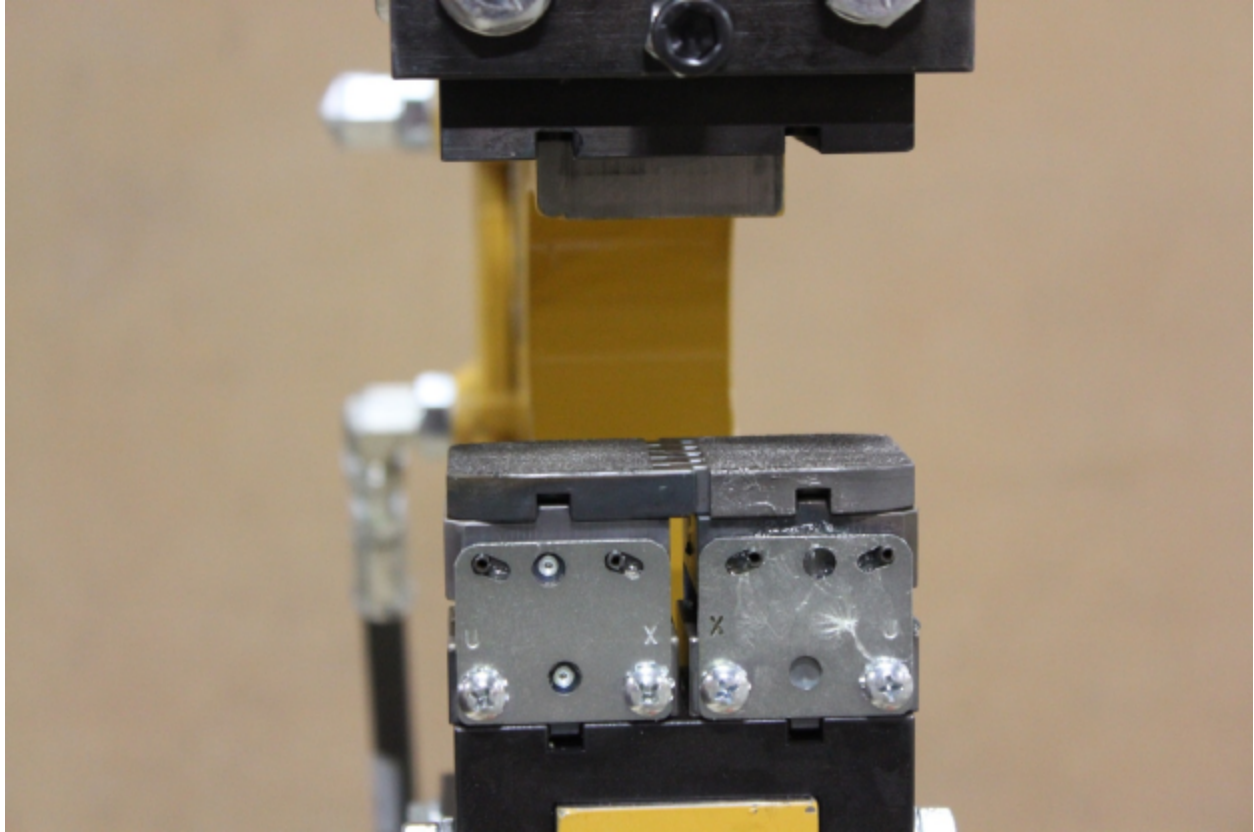
#### **6) INSTALLING**

- i) Be sure to rest machine on a flat surface
- ii) The electrical connection must be inspected by a certified electrician, and the incoming voltage must be verified to be correct before the machine is turned on. Have a certified electrician verify that the power source is correct for the machine's specifications, and that the plug is correct and properly grounded to an earth ground. The warranty is void if incorrect power is supplied to the machine.

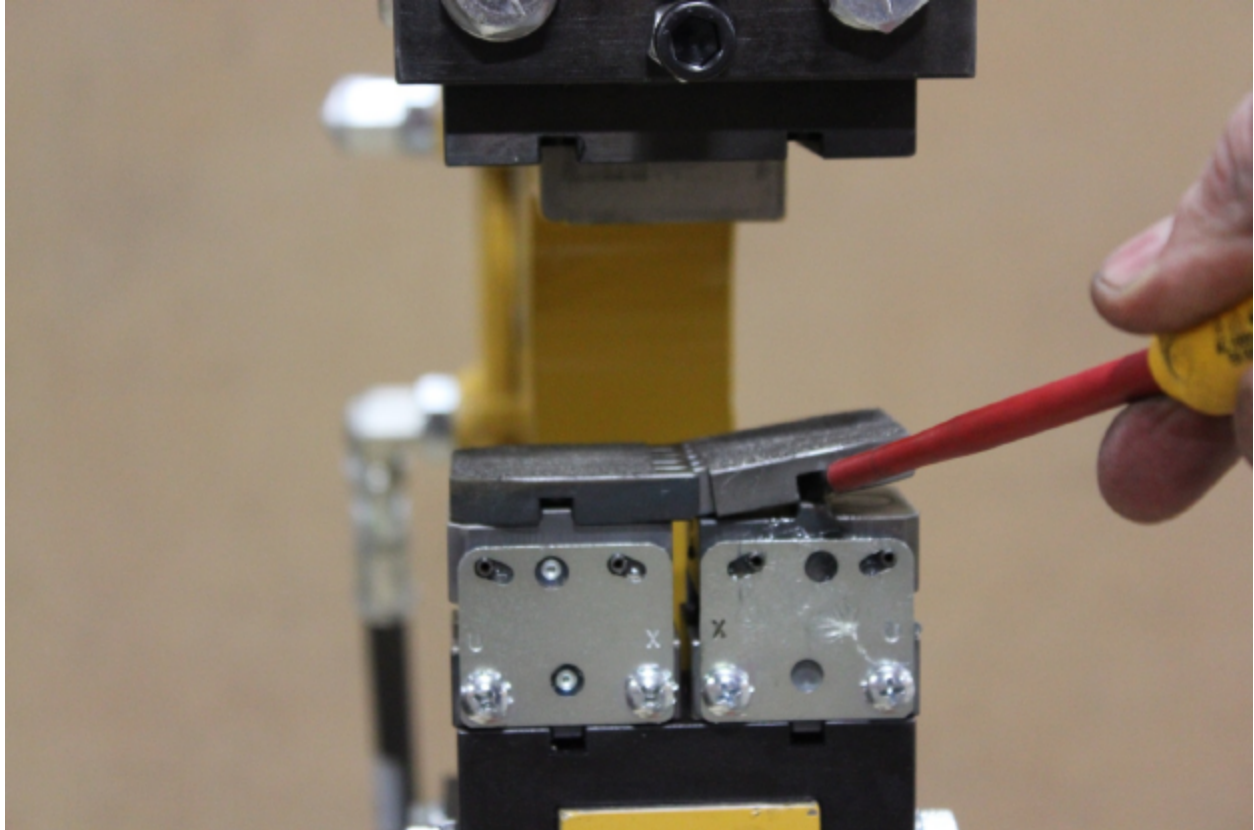
## TOOLING INSTALLATION:



This set up show how the tools should be installed for shrinking. Notice the marking " X" is pointing toward each other in both the top and bottom die sets. Also notice that the screw heads point away from the material.

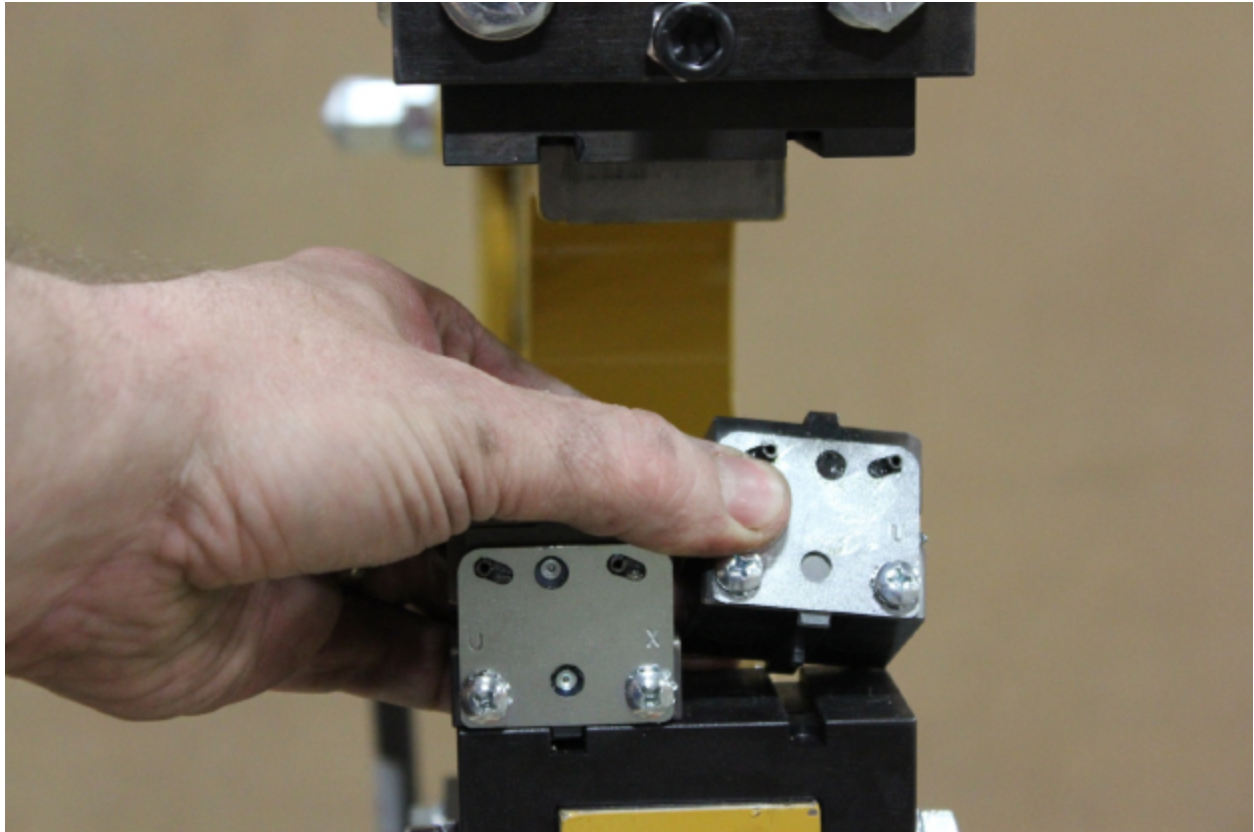


In this view it shows the top die assemblies removed so you can see the jaw orientation. The jaws with serrations are to be used for shrinking.

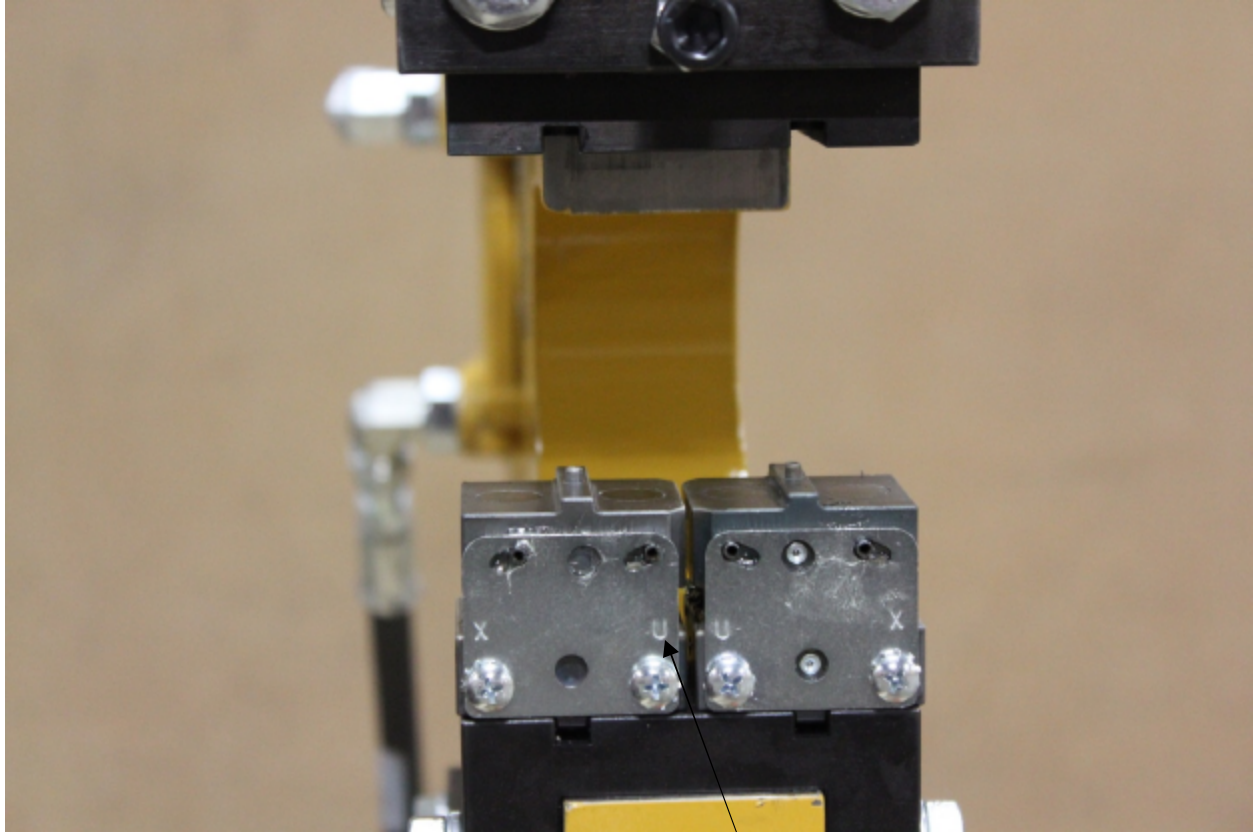


In this view it will shows how to remove the jaw caps. Insert a screw driver into the machined slot to break the magnetic force.

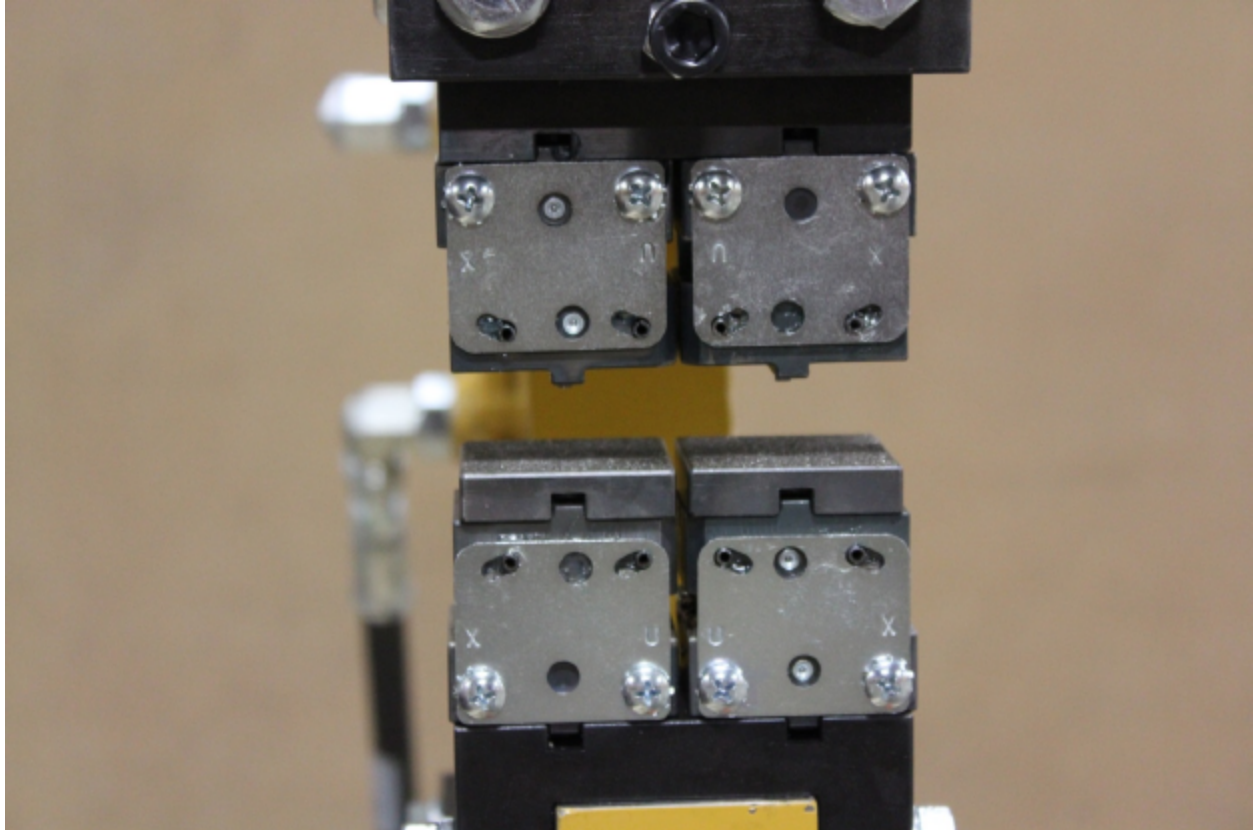




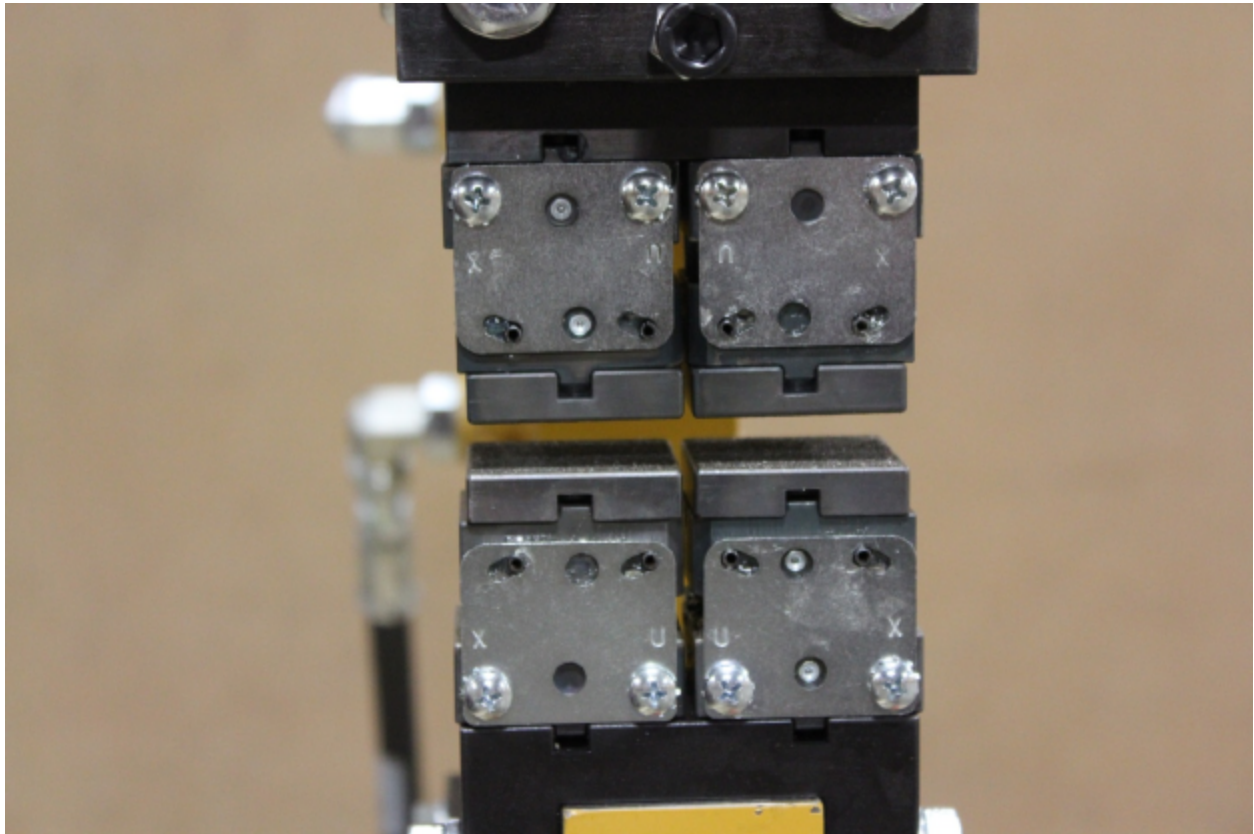
Once the force from the magnet is released, grab onto the assembly and remove.



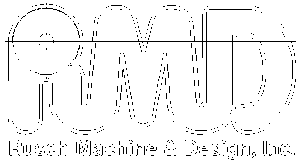
In this view it shows the jaws installed for stretching. Note that the markings "U" are now pointing together, basically reversing the jaws from pervious steps.



Here you will see both top and bottom mechanisms installed for stretching. Both show the “U” pointing at each other and the screws pointing away from the material.



Here is a completed setup for stretching.



## 7) WARRANTY

### a) Coverage

- (1) Rusch Machine & Design, Inc. warrants to the original purchaser for use that the products sold by RMD, Inc. will be free from defects in workmanship and material for a period of one year from the date of purchase provided such goods are installed, operated, maintained and used in accordance with RMD, Inc.'s written instructions.

### b) Exclusions

- (1) Ordinary wear and tear, and damage from abuse, neglect or alterations are not covered by this warranty. **THIS WARRANTY IS NULL AND VOID IF INSTRUCTIONS AND OPERATING PROCEDURES ARE NOT FOLLOWED.**
- (2) Die sets are excluded from warranty.
- (3) Machine maintenance, adjustments, setups or downtime costs are excluded from warranty.

**Rusch Machine & Design, Inc. will in no event be liable for incidental or consequential damages.**

### c) Conditions

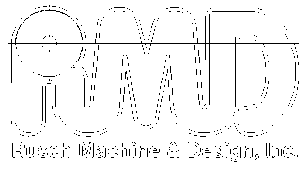
- (1) All warranty work must be approved by RMD, Inc.
- (2) All defective items must be returned to RMD, Inc. for inspection.
- (3) Customer pays freight, travel and all other associated costs other than parts and labor

### d) Extended Parts Warranty

All electrical components and gearboxes carry a one-year replacement warranty from manufacturer.

**Replacement labor not included. Customer pays freight costs.**

Any questions pertaining to this limited warranty should be addressed to:



Rusch Machine & Design, Inc.  
P.O. Box 375  
Two Rivers, WI 54241