

## 2-4 ANGLE FINDERS & LEVELS

Digital Levels • Dial Levels • Bend Protractors • Angle Finders • Plane-Of-Bend Indicators • Torpedo Levels • Digital Protractors • Fractional Calipers

## 5-8 SAWS

Circular Cold Saws • Portable Metal Cutting Saws • Horizontal Band Saws • Mag Brush • Mitering Band Saws • Vertical Band Saws • TCT Chop Saws

## 9-10 GRINDING & SANDING

Belt Grinders • Combination Belt & Disc Grinders • Deburring Machines • Bench Grinders • Disc Grinders • Knife Making Machines

## 11-12 WELDING ACCESSORIES

Variable Angle Clamps • Fixed Angle Clamps • Tab and Bracket Holders • Rotary Welding Positioners • Fixturing Tables

## 13-18 METAL SHAPING

English Wheels • Planishing Hammers • Tapered and Straight T-Dollies • Shrinker/Stretchers • Mallets and Shot Bags • Educational Books and Videos

## 19-22 BRAKES & SHEARS

Throatless Shears • Straight Brakes • Box & Pan Brakes • Hand Notcher • Kick Shears • Slip Rolls • Manual & Hydraulic Shears

## 23-26 IRON WORKERS & PRESSES

Ironworkers • H-Frame Presses • Press Brakes • Louver Press • Bench Presses • Dimple Dies • Punch & Flare Tools

## 27-29 PUNCHING & DRILLING

Sheet Metal Cutters • Drilling Jigs • Hand Punches • Bench Punches • Mag Drills • Drill Presses • Annular Cutters • Flowdrill

## 30-32 BEAD FORM TOOLS

Bead Form • Bead Rollers • Rotary Machines • Portable Expanders • Tubing Swager

## 33-36 TUBE NOTCHERS

Abrasive Notching Machines • Hole Saws • End Mill Notchers • Hole Saw Notchers • Pipe Notchers • PipeMasters

## 37-45 TUBE BENDERS

Design & Layout Software • Rotary Draw Benders • Mandrel Bending Machines • Hand Bending Machine • Roll Bending Machines • Exhaust Benders

## 46 CNC PLASMA SYSTEMS



# Angle Finders and Levels

## Digital Angle Gauge

Wixey Digital Angle Finder/Level is a handy tool for finding true bevel angles on a saw, tracking rotation of a tube during tube bending (with optional base), or setting up milling/drilling operations. The gauge can be "zeroed" at any point. The small body is only 2" x 2" and has a strong magnetic base. Each Wixey gauge comes with an additional battery for extra long usage. You will find a lot of applications for this gauge!

The optional base will attach to round tubing or pipe that is 1" through 2" OD. The base also swivels independently of the gauge, so you can use it as a level.



- WR300 Digital Angle Gauge.....\$39.99
- Digital Angle Gauge and Bracket Combo.....\$99.98
- Angle Gauge Bracket Only (attaches to 1"-2" round tube).....\$59.99

## Digital Level

No shop should be without this handy digital level. Accurate to .1 degrees, the Digital Smart Tool runs for about 400 hours on a single 9 volt battery and has an automatic shut off after 6 minutes. Displays degrees, slope % and pitch (in/ft) with arrows to show the direction to move towards level. The display inverts when the tool is moved beyond 90°. Fits into most standard levels with oval slot.



- Digital Smart Tool (module only) **SALE!**.....\$114.95
- Deluxe Smart Tool 8 (includes 8" aluminum rail with magnetic base, shown above) **SALE!**.....\$139.00

## Digital Protractor



These digital protractors can be used in any plane and will help find precise angles with ease. Excellent for setting up a saw, calculating the correct angle for a bend, or measuring an existing part. Measures to .1 degrees.

- Range: +/- 180 degrees
- Resolution: 0.1 degrees
- Accuracy: +/- 0.1 degrees
- Auto shutoff for extended battery life
- Legs are 2" wide
- Built-in magnets on the edge of the legs
- Legs can be tightened for holding measurement

- WR410 Digital Protractor (9" long legs).....\$58.99
- WR418 Digital Protractor (18" long legs).....\$74.99

## Fractional Digital Calipers



Wixey Digital Calipers with Fractions are precision stainless steel calipers that display measurements in inches with fractions or millimeters. They are constructed of high quality hardened and ground stainless steel components. Wixey products incorporate patent pending "Precise Fraction Technology"™. This technology displays both decimal inches and fractions at the same time. The fractions only appear when they are almost precisely at the decimal equivalent (+/- .002"). This gives you at least 4 times the accuracy of other fraction displays. Includes carrying case, instruction manual, and additional battery.

- WR100 Digital Calipers w/ Fractional Readout.....\$38.99

**Terms:** We ship UPS and accept Visa, Mastercard, American Express, Discover, and PayPal. Shipments via common carrier must be prepaid and will be FOB point of origin. No returns without prior approval. No returns after 30 days. Products must be in original package in new/unused condition. Returns must be shipped prepaid. A 15% restocking fee will be applied. Any claims for damage or loss must be filed with carrier by purchaser. Prices and specifications subject to change.

**Lease Terms:** Posted lease prices are based off of the products pricing at the time of printing and a customers best possible credit score. All posted lease pricing is subject to change and is not a guaranteed price. See website for online applicaion and 30 second approval.



# Angle Finders & Levels

## Torpedo Levels

With their "no-compromise" design and superior quality, the Checkpoint Professional Levels are designed for portability, efficiency and professional durability. These levels feature rare-earth magnets for incredible holding power, CNC milled accuracy from billet 6061 aluminum alloy, and precision vials. They come with a lifetime guarantee on the "indestructible" bodies.

- 303 Ultra Mini Mag SALE! ..... \$29.99
- 300 Ultra Mag SALE! ..... \$34.99
- 327 Laser Level SALE! ..... \$89.99



327 Laser Level



300 Ultra Mag



303 Ultra Mini

## Dial Levels



For critical projects use the Angle Level to accurately set or measure angles. Unlike many products that stick, vibrate and bounce, the Angle Level settles smoothly to the angle due to its oil damped, ball bearing movement. The hairline pointers can be precisely aligned and the angle read off to each degree, then divided at the vernier scale to the stated accuracy. A strong magnet base allows hands-off use on ferrous metals. This is a high quality tool with lots of features, not like cheaper versions.

- Angle Level 2 (1/10°) (3.6" x 3.1" includes case)..... \$59.95
- Angle Level 3 (1/20°) (5.5" x 5", die cast housing w/ carrying case)..... \$169.95

## Tube Rotation Gauges

Now, to compliment our popular Angle Levels, we offer two sizes of Angle Level Base. These powder-coated steel clamps provide accurate plane of bend tracking on round tubes. Great for chassis or exhaust work!

- ALB Angle Level Base (up to 2" tube)..... \$34.95
- ALB4 Angle Level Base (1-1/2" - 4" tube)..... \$44.95
- ALB Combo (Includes Angle Level 2 & ALB) Save \$15!..... \$79.90
- ALB Combo 4 (Angle Level 2 w/ ALB4 Base for up to 4" OD) Save \$15!..... \$89.90



## Huth

The Huth rotation dial indicators are the perfect companion to large diameter tube bending applications such as exhaust, turbo, and cold air intake systems. The 976 CC is used with all non Huth bend data cards and, as with the 996 dial, is the most accurate in the industry. Built with a rugged cast aluminum body and weighted indicator arm, they are sure to stand up in a rugged environment.

- 1" OD - 3" OD capacity
- 360° rotation
- Dimensions: 4-1/2" x 9"

- 996 Clockwise Rotation (Huth bend cards)..... \$210.00
- 976 CC Counter-Clockwise Rotation (Non Huth bend cards)..... \$210.00



## Radius Check Gauge

This radius check gauge by Proline is a valuable addition to any metal shapers tool box. Great for duplicating contours and assuring consistency in radiused sheet metal parts. Provisions for 0, .75", 1", 1.25", 1.5", 2", 3", 4", 6", 12", 24", 36" radii. CNC machined aluminum with durable red anodized finish.

- Proline Radius Check Gauge..... \$36.50



# Angle Finders and Levels

## Radius Gauges

These inside and outside radius measuring gauges are sure to speed up complicated calculations and fabrication of roll bent materials. Applications such as handrails, spiral staircases, aircraft parts, boat railings, awnings, and more will benefit from this tool. An invaluable companion to any angle roll bending or plate roll machine. Kits include one inside and one outside radius gauge.

- ArcMaster Large Radius Kit (6" - 144" Range)..... \$229.99
- ArcMaster Small Radius Kit (2.5" - 30" Range)..... \$129.99



## Bend Protractors



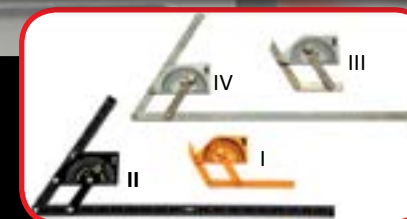
These high quality bend protractors will help you duplicate bends found in existing parts. They are available for five different radii and can be used as a template for one off parts.

- Easy to set for any degree of bend from 0°-90°
- Can be used as a bend template or degree indicator
- Inner scale shows degree of bend
- Outer scale shows developed length for each degree of bend
- Lightweight aluminum for ease of use
- Precision CNC engraving

- 4" Centerline Radius Protractor ..... \$105.00
- 5" Centerline Radius Protractor ..... \$115.00
- 6" Centerline Radius Protractor ..... \$125.00
- 7" Centerline Radius Protractor ..... \$135.00
- 8" Centerline Radius Protractor ..... \$145.00
- Complete Set of all five Protractors 4" thru 8" ..... \$525.00

## Angle Finders

Find any inside or outside angle between 10° to 360°. Choose from four different models.



- Angle Finder I (plastic 6") ..... \$9.95
- Angle Finder II (aluminum 20") ..... \$39.95
- Angle Finder III (stainless 4") ..... \$59.95
- Angle Finder IV (stainless 20") ..... \$79.95

## Tube Bender Survival Kit

This kit features some of our best selling tube bending "Survival Tools." Included are 5 products to use with your tubing bender to reduce scrap material and save time!

- Digital Angle Gauge and Bracket:** Helpful to track rotation of tubing
- AF2:** Use this angle finder to check degree of bend
- TC1:** Tube welding positioner to secure tubes during welding
- Paste Lube:** Use this to save wear on your bender tooling
- Options:** Bend Tech Layout software to assist with part manufacturing

- Tube Bender Survival Kit..... \$179.95
- Tube Bender Survival Kit w/ BT EZ..... \$229.95
- Tube Bender Survival Kit w/ BT EZ-3D..... \$309.95
- Tube Bender Survival Kit w/ BT Pro..... \$435.95





Cut 250

Finance as low as \$64.00 / Month



## Circular Cold Saws

Our circular cold saws are the quickest and most accurate way to cut tubing, bar stock and structural shapes without the mess of chop saws and much faster than band saws. The low speed blade with coolant produces a mill quality, burr free cut without heating the material. The head of the machine can easily be rotated to perform miter cuts or even slot down the end of a tube (350 model only).

We are proud to offer the Dake line of cold saws. These industrial quality saws were chosen for their heavy duty spindles and gearboxes and for the superior warranty they offer. All the Dake saws come with a pedestal, blade, tool kit, coolant, adjustable stop and service manual. Call us for information on the complete line including semi-automatic and automatic applications.

- Head rotates 45° right and left of center for miter cutting and 350 model rotates to 90° for slotting.
- Oversized spindle and gear assembly with steel spindle and bronze gear
- Additional ball bearing support of hardened and ground spindle shaft to prevent failure
- Cam activated vise with gib adjustment and anti-burr arm
- Reliable mechanical coolant pump with flow control adjustment
- 315 & 350 models feature 24v control circuit, E-stop switch, low voltage and thermal protection, optional pneumatic vise
- 350 model features an adjustable safety clutch to eliminate blade breakage.



Scan for Video

Capacity	Round Solid		Round Tube		Square Tube		Rectangle Tube	
	90°	45°	90°	45°	90°	45°	90°	45°
Cut 250	1-1/4"	1"	2-3/4"	2-3/8"	2-1/2"	2-1/8"	3-7/8" x 1-3/4"	2-1/2" x 1-7/8"
Super Cut 315	2-1/8"	1-3/4"	3-5/8"	3-1/2"	3-1/4"	3-1/8"	4-1/4" x 2-3/4"	3-1/4" x 2-3/4"
Super Technics 350	3-3/8"	3"	4-3/4"	4"	4-1/8"	3-3/8"	6-1/4" x 3-1/2"	3-3/8" x 2-3/4"

Cut 250	10" blade	1.2hp/110v	44 rpm	378 lbs.	<b>SALE!</b> \$2,337.50
Super Cut 315	12.5" blade	2.5hp, 110v 1ph 2.5hp, 220v 3ph	44 rpm 22/44 rpm	450 lbs. 450 lbs.	<b>SALE!</b> \$3,825.00 <b>SALE!</b> \$3,825.00*
Super Technics 350	14" blade	3.5hp, 220/440v 3ph	22/44 rpm	650 lbs.	<b>SALE!</b> \$4,331.39*

\*Add \$500.00 for 440 volt

## Portable Cold Saw

This lightweight bench top cold saw can be easily moved around the shop or taken to the job site. With a durable cast iron construction, the Hyd-Mech P225 can cut small solids, tubing and structural shapes quickly with a smooth, mill-like finish.

- Head rotates 45° for miter cutting
- Control handle contains the on switch for safety
- Flood coolant and pump
- Standard blade included

Capacity	Round	Square
90°	2-1/2"	2-1/4"
45° Left	2"	1-3/4"

Model Number:	P225
Motor:	1 hp, 110v
Blade Speed (rpm):	50
Blade Size (mm):	225 x 32 x 2
Maximum Blade Size:	9"
Vise Opening Max:	2-3/4"
Weight (lbs.):	83
Price:	\$990.00



## Metal Cutting Saws

The Evolution Steel Saw 2 is unlike conventional abrasive chop saws. It utilizes a circular saw style blade, so that the cut quality, blade life, and safety factors are much better than abrasive cut off machines. Evolution saws are much cleaner, faster, and safer than torches, portabands and other methods. A powerful 2.95 hp motor provides plenty of power for most cutting applications.

- 5-1/8" round, 4-3/4" square, and 4-3/4" x 7-1/4" rectangular capacity
- Miters up to 45°
- High quality construction
- Will cut stainless, aluminum, steel and sheet metal

Blade Size	14"
Arbor Size	1"
Weight (lbs.)	50
Watts	2200, 110v, 50-60hz
Amps	15
RPM	1300
Dimensions (H W D)	22" x 22" x 12-3/4"
Price	<b>SALE!</b> \$405.00



Scan for Video



Steel Saw 2

The Evolution line of saws cover many applications from thin sheet metal to 1/2" thick plate! Cuts tubing, angle iron, metal grating, channel, roofing, fencing, frames and more. It is much cleaner, faster, and safer than torches, portabands, and other methods. The Evolution saw line offers two sizes of machines that are covered by a three year manufacturer's warranty.

- Clean cutting, collects virtually all chips and sparks
- Lightweight, only 14 or 20 lbs, depending on model
- Cutting depth up from 2" or 3-1/4", depending on model
- Spindle lock for fast easy blade changes
- Steel Saw 5 bevels up to 45°
- Dry cutting for minimal clean up
- High quality construction
- Sturdy carrying case
- Overload switch
- Laser guide on Steel Saw 5



Scan for Video



Steel Saw 5

Steel Saw 1 Metal Cutting Saw (110v, 7-1/4" blade included) **SALE!** ..... \$180.00

Steel Saw 5 Metal Cutting Saw (110v, 9" blade included) **SALE!** ..... \$306.00

## Portable Band Saw

This portable band saw from HEM Saw is great for hobbyists and those needing a lightweight, portable saw with large cutting capacity. A two speed control aids in cutting both ferrous and non-ferrous metals, while the 45° swiveling miter head makes miter cuts a breeze.

- Powerful 1 hp motor, 110v
- Adjustable front band guide
- Two speeds
- Optional table for vertical use



782XL Portable Band Saw **SALE!** ..... \$499.00

Vertical Work Table ..... \$134.00



## Mag Brush

The Mag Brush helps pick up filings and chips or even small parts by the use of a powerful magnet. Simply pull the plunger out to release over a bin or wastebasket. Saves time and money in cleanup. So handy you'll want one by all your machines.

Mag Brush (15" length) ..... \$39.95

Super Mag Brush (36" length) ..... \$79.95







NG120XL

Finance as low as \$35.00 / Month

## Portable Band Saws

These variable speed utility band saws from HEM Saw combine accuracy, speed, and large cutting capacity in a compact package. They feature powerful motors and heavy cast construction for years of use. Their innovative reverse blade rotation design results in up to 60% faster cuts than similar saws of this size. The NG120ABS model features a unique gravity down feed system that allows for hands free cutting!

Model	Capacity	Blade Size	Speeds (fpm)	Motor	Mitering	Weight	Price
NG120XL	4-3/4" Round	56-3/4" x 1/2"	115-260	1.7 hp 110v	60°	39 lbs.	\$1,293.00
NG160	6" Round	68-3/4" x 1/2"	115-260	2.7 hp 110v	45°	77 lbs.	\$1,915.00
NG120ABS	4-3/4" Round	56-3/4" x 1/4"	98.5-262.5	1.7 hp 110v	60°	39 lbs.	\$1,479.00



Scan for Video

## Horizontal Band Saws

Finance as low as \$48.00 / Month

These heavy-duty horizontal band saws from Dake have features normally only available on much more expensive machines. The heavy cast bed and housing makes for accurate and vibration free cuts while the low voltage controls, auto shut off and overload protection provide operator safety and machine longevity. These saws are covered by Dake's standard one-year warranty and come with the following standard equipment.

- Rugged gear box with bronze and steel gears
- Chip brush blade cleaner
- Hydraulic control for down feed with locking valve
- Re-circulating coolant system
- Quick release vise and hand wheel action lead screw



SE 712

Model	Capacity	Blade Size	Speeds (fpm)	Motor	Dimensions	Weight	Price
SE712	7" Round	93" x 3/4"	85/130/180/235	3/4 hp 110v	56 x 21 x 39	350 lbs.	\$1,750.00
SE912	9" Round	103.5" x 1"	98/164/246/328	1 hp 110v	56 x 21 x 41	520 lbs.	\$2,750.00



Trademaster

Finance as low as \$137.00 / Month

## Vertical Band Saws

These quality vertical saws by Dake are built to last. With capacities up to 41", we have a saw to fit any job and budget. Options like blade welders, power feed and tilt tables make these machines a great value. The 14-10 and Trademaster are built in the U.S.A., the F-16 is assembled in the U.S.A. and all are covered by Dake's one year warranty. Please call us for machines not listed.

Model	Blade Width	Speeds (fpm)	Motor	Throat Cap.	Work Height	Weight
14-10	1/4" - 1/2"	70/140/270/540	1 hp	14"	10"	625 lbs.
F-16	1/8" - 5/8"	60 - 590	1.5 hp	16"	11"	975 lbs.
Trademaster	1/4" - 1"	50 - 500	1.5 hp	19.5"	12"	1,150 lbs.

- 14-10 – tilt table, 4 speeds, high performance at a low price (110/220v 1 ph or 220/440v 3 ph) ..... \$4,995.00
- F-16 – fixed table, variable speed, digital tach, large capacity (220v 1 ph or 3 ph) ..... \$5,950.00
- Trademaster – power feed tilt table with 11" travel, variable speed, work lamp (220/440 3 ph) ..... \$8,995.00



Scan for Video

## Mitering Head Band Saws

Finance as low as \$104.00 / Month

The HEM Saw N215XL mitering head band saw is excellent for the industrial user with its highly accurate cuts and large capacity. Its heavy duty cast iron and steel construction equates to a very durable cutting platform. The integrated coolant system keeps the blade and the material cool during the cutting process. The head rotates up to 60 degrees for almost any miter cut. An adjustable length stop is also included for easily repeatable cuts.

- 6-1/4" capacity
- 60° Mitering
- Integral coolant system
- 220v 1ph

Femi N215XL.....\$3,776.00

## HEM Saw



TRAD 301

Finance as low as \$274.00 / Month

These industrial duty mitering head band saws swivel up to 60° so your material doesn't have to and their relatively small footprint helps out where space is limited. Each machine is equipped with a direct drive system to provide the most power and reliability. Easily set the most appropriate blade and head descent speed according to the material size and shape for maximum efficiency.

- Low voltage controls meet CE standards
- Chip brush blade cleaner
- End of cut and blade breakage shut off
- Re-circulating coolant system
- Quick cam lock vise
- Pre-set blade tension stop

Model	Capacity	Blade Size	Speeds (fpm)	Motor	Dimensions	Weight	Price
ZIP22	7" Round	82" x 3/4"	197	1 hp 110v	28 x 51 x 71	397 lbs.	\$2,995.00
ZIP29	9.75" Round	96.5" x 1"	105/210	1.5 hp, 220v, 3 ph	30 x 55 x 63	474 lbs.	\$5,595.00
TRAD301	10" Round	108.25" x 1"	108/216	2 hp, 220v, 3 ph	47 x 79 x 77	970 lbs.	\$9,950.00

## Dake

## Ellis

Finance as low as \$79.00 / Month

The Ellis 1600 band saw is very popular for its dual mitering capability, extremely large cutting capacity, and rugged durability. The material stays stationary for miter cuts, while the head rotates up to 50 degrees both left and right. Fast and accurate angle selection are possible with the built-in protractor. Head feed rate is controlled by the hydraulic control, that has a locking valve for setting up cuts. Material clamping and unclamping is quick and easy with the standard quick acting vise. This portable bandsaw will meet your needs in the shop or on the work site.

Ellis 1600 SALE!.....\$2,895.00  
Ellis 1800 SALE!.....\$3,495.00



Model 1600



Scan for Video

Model	Capacity (90°)	Capacity (45°)	Blade Size	Speeds (fpm)	Motor	Dimensions	Weight
1600	10" round, 11" flat	6.875" round, 7.25" flat	120" x 1"	70/135/250	1 hp 110v	59 x 24 x 47	481 lbs.
1800	11" round, 14" flat	9" round, 9" flat	132" x 1"	70/135/250	1 hp 110v	66 x 29 x 47	640 lbs.



# Grinding and Sanding



# Grinding and Sanding

## Belt Grinder Attachments

The Multitool belt and disc grinding attachments for your bench grinder are must-have tools for any fabricator! These versatile tools remove material up to five times faster than with the equivalent grit grinding wheel. Belts change in seconds from grinding to sand deburr or polish. Quality construction is backed by a 3-year warranty. The attachments are all available with motor options to suit the hobbyist or the professional. Includes one 80 grit belt.

- MT362 Multitool Grinder Attachment (2"x36" belt) .....\$199.95
- MT362-100 Multitool Grinder (2"x36" belt, w/ JET 1 hp grinder) .....\$419.95
- MT482 Multitool Grinder Attachment (2"x48" belt) .....\$279.95
- MT482-100 Multitool Grinder (2"x48" belt, w/ JET 1 hp grinder) .....\$499.95
- MT484 Multitool Grinder Attachment (4"x48" belt) .....\$329.95
- MT484-100 Bundle Multitool Grinder (4"x48" belt, w/ JET 1 hp grinder) .....\$549.95



### Accessories

- Grinder Floor Pedestal..... \$109.00
- Wall Mount Grinder Pedestal .....\$89.95
- Disc Grinder Miter Attachment.....\$74.95



## Belt Grinders



Finance as low as \$60.00 / Month

The RadiusMaster is a patented belt grinding machine that outperforms all other general purpose belt grinders. It offers higher performance, more convenience, plus greater versatility and durability than general purpose machines. The RadiusMaster offers a combination of features never seen before on one tool! No accessory tools required to change wheels, tilt, swing away guards or change belts. Small wheel selection can run continuously unlike the competition!

- 5 contact wheels, 3/4", 1", 1-1/2", 3-1/2", and 8"
- Tilts on the side to be used as a bobbin grinder, also great for pipe notching
- Fully sealed bearings
- Belt size: 48"x 2"
- Belt speed: 3,600 feet per minute
- 1.5 hp, 110v (overload protected)
- Operator lock-out switch

- RadiusMaster (includes 5 belts & pedestal).....\$2,195.00
- Drive Wheel Tool Rest for RadiusMaster.....\$225.00
- Hollow Grinding Jig for RadiusMaster.....\$395.00



## Burr King

Finance as low as \$42.00 / Month

The Burr King X400 features a 2"x 48" belt, US made 1 hp motor, heavy cast construction, and all of the precision and smooth running qualities Burr King grinders are known for. The design of this grinder allows for grinding at multiple points; contact wheel, slack belt, and platen grinding. Perfect angles can also be achieved thanks to the included adjustable work rest. Machine includes an adjustable back-up platen and a 120 grit belt.



- Contact wheel, platen, and work support grinding
- Precision machined components
- Quick belt change
- Belt guard



- X400-BK Belt Grinder (2"x48" belt, 1hp, 110v).....\$1,540.00

Finance as low as \$53.00 / Month



The Burr King name speaks for itself! These popular 3-wheel grinders feature slack contour belt grinding as well as contact wheel and work rest grinding. Standard units are wired for 110v, also available in 220v power and a host of options. Best quality and widest range of options including variable speeds, dust collector, and pedestal

- Cast frame
- Precision machined components
- Smooth and powerful operation
- Quick belt change & tracking
- Contact wheel, platen, and work support grinding

- 482 Belt Grinder (2"x48" belt).....Starting at: \$1,928.00
- 760 Belt Grinder (1-1/2"x60" belt, 110v)..... Starting at: \$2,311.00

Finance as low as \$70.00 / Month

Burr King's two wheel grinders provide vigorous contact wheel, work rest, and platen grinding in a frame design that pivots to ideal work positions. These machines are ideal for tool post grinders, roll grinders, and for fixturing into centerless grinding applications. Available in easily adjusted variable speed and aggressive single speed, plus two different belt widths. If you are looking for a particular durometer contact wheel, variable speed, or special voltage application, call us! We will be glad to accommodate your needs.

- Precision machined components
- Positive belt tracking
- Quick belt change
- Up to 8,000 SFPM belt speed standard



- 960-250 Belt Grinder (2-1/2"x60" belt) .....Starting at: \$2,407.00
- 960-400 Belt Grinder (4"x60" belt).....Starting at: \$3,364.00

## Hardcore

Finance as low as \$75.00 / Month



Hardcore variable speed 6 x 60 inch Belt Grinders are precision machines designed and balanced for vibration free operation. All adjustments are quick and easy with micro adjustments for belt tensioning and tracking control. This premium unit utilizes a billet aluminum construction and is popular among race car fabricators and knife makers.

- 1.5 hp motor; 2,500 RPM
- Variable Speed Motor
- Dimensions (LxWxH): 21"x 22"x 30"
- Belt Dimensions: 6"x 60"
- Quick belt change & tracking

- Hardcore BGA-6 Belt Grinder (110V/220V 1hp).....\$2,750.00



# Welding Accessories



# Welding Accessories



## Magnetic Positioners

These small but powerful positioning magnets from StrongHand are the perfect accessory for any welder's or fabricator's shop. These tools have an incredible holding capacity and feature an on/off switch to make repositioning a breeze!

- MAV120 Adjust-O Angle Magnet .....\$246.75
- MS2-80 6" Dual Switch Magnet (78 lbs. of force).....\$120.75
- MS2-90 8" Dual Switch Magnet (150 lbs. of force).....\$207.90



## Welder's Survival Kit

This kit features an assortment of our best selling and most useful welding clamps and magnets! Included in this 9 piece kit, you'll find a variety of tools to help you out, no matter what you're welding.

- (1) Shark Clamp
- (1) Multi-Purpose Pliers
- (1) Corner Magnet Twin Pack
- (1) Standard Positioning Magnets
- (2) Tab and Bracket Holders
- (1) Multi Purpose Pliers w/ V- Pads
- (1) Adjust-O Magnet Square
- (1) Clip on V-Pad

WSK Welder's Survival Kit.....\$164.95



## Tube Welding Positioners



This tube welding positioner is a great tool for race car builders and tube fabricators. It can be adjusted to any angle and will securely hold your parts for tack welding without magnetizing. This simple tool can save hours of frustration when working with coped tubes.

- TC1 Tube Welding Positioner (1"-2" OD).....\$38.95
- TC1 Tube Welding Positioner Buy two and save!!.....\$69.90
- TC2 Tube Welding Positioner (2"-3" OD).....\$45.95
- TC90 90° Fixed Tube Welding Positioner (1"-2" OD).....\$26.00
- TCKit Tube Welding Positioner Kit (Set of 4 includes 2-TC1s, 1-TC90, and 1-TBH)..\$119.95

## Fixturing Tables

Siegmund Welding Tables are the finest available on the market. These German constructed tables feature five fixturing surfaces constructed from 1 inch (25mm) thick plate with additional reinforcement underneath the work surface. Fixture mounting holes are CNC machined to 28mm diameter, spaced 100mm apart with a flatness rating of +/- .0025 inches per foot. The tables are given a plasma nitride finish which creates a work surface that is extremely resistant to wear, deformation, corrosion, and weld spatter. Table hardness is rated at HRC 49.7 (HV500). A wide variety of clamps and fixturing components are available for these tables to make them useful for virtually any welding project. **(Table does not include legs.)**

See our website for accessory and leg options!

- 47" x 31" Welding Table.....\$4,200.00
- 47" x 47" Welding Table.....\$5,200.00
- 78" x 39" Welding Table.....\$6,000.00
- 94" x 47" Welding Table.....\$8,000.00
- 78" x 78" Welding Table.....\$10,400.00
- 118" x 59" Welding Table.....\$10,800.00



## BuildPro

The BuildPro welding table by StrongHand Tools is one of the most adaptable welding and fixturing tables on the market today. The modular design allows the precision ground and CNC machined top plates to be reconfigured to extend the width of the table for larger projects. The table is also easy to set-up and tear down, saving valuable work space. The BuildPro will help you decrease fixture set-up time, and increase work efficiency.

- Heavy duty leveling feet
- 1-3/4" spacing between plates
- Table flatness of .004"/ft
- Hole diameters of .625"
- Hole spacing of 2.00"
- Plate thickness of .625"

- 47" x 38" Standard Table (add \$525.00 for Nitrided Table).....\$2,205.00
- 78" x 38" Standard Table (add \$1,000.00 for Nitrided Table).....\$3,300.00
- 94" x 46" Standard Table (add \$750.00 for Nitrided Table).....\$4,550.00
- 94" x 48" BuildPro MAX Standard Table (Continuous plate design, no slots, add \$900.00 for Nitrided Table).....\$4,900.00



## Welding Tables

The Nomad Portable Welding Table is the perfect solution for home fabricators limited on shop space or fabricators in the field who need a small portable table to take to the job site.

- Heavy 14 ga 20"x 30" top with 350 lb load capacity
- Three 1.1" slots in the tabletop allow for insertion of clamps
- Tabletop tilts to three positions: Horizontal, 30°, and folded
- Height adjustable from 26" to 32"
- Includes two heavy casters for portability



- Nomad Welding Table .....\$156.75
  - Nomad Deluxe Kit .....\$219.95
- (Includes: Nomad Welding Table, (2) UB45 Magspring Clamps, (1) MS346C Multi-Angle Magnet, (1) MS346A Mini Magnet, (2) XDV4 Adjustable Magnetic V-Pads)

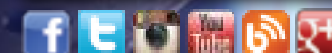
## Rotary Welding Positioners

The Roto Star welding positioners are a must for precision welding. These heavy duty units were designed to increase productivity and improve quality for a variety of applications. They can be ordered with a standard 3 jaw chuck with thru-hole and 250 lbs. of capacity, or a surface plate for fixturing work pieces. They are adjustable from 0° to 90° by 15° increments and feature a 300 amp double grounding system which eliminates feedback during high frequency welding. A reversible variable speed control unit and foot pedal allow hands free operation. Optional accessories include variable speed foot pedal, adjustable idler roller assembly and arm rest.

- Roto1 (w/ 6" chuck) (add \$400 for variable spd pedal) .....\$2,195.00
- Roto1-P (w/ 12" surface plate) (add \$400 for variable spd pedal) . \$1,795.00
- Roto3 (w/ 8" chuck) (add \$400 for variable spd pedal) .....\$2,795.00
- Roto3-P (w/ 16" surface plate) (add \$400 for variable spd pedal) . \$2,395.00



Specifications	Roto Star 1	Roto Star 3
Chuck	6" 3 Jaw	8" 3 Jaw
Max. Swing @ 0	16"	20"
Vertical Weight Cap	200lbs.	250lbs.
Horizontal Weight Cap	100lbs.	150lbs.
Thru Spindle Cap	1-1/2"	2-1/2"
Spindle Rotation	360°	360°
Spindle Speed	0-15rpm	0-13rpm
Angle Adjustment	15° increments	15° increments
Grounding Cap	300amp	300amp
Voltage	110 or 200v	110 or 200v
Optional Table	12" dia	16" dia







## Educational Books

Educational fabricating books from top authors are a great learning aid. Books by Tim Remus, Richard Finch, Ron and Sue Fournier and Bryan Fuller will be referred to over and over again. Excellent insight, lots of pictures, and many helpful tips will guide you in your journey to be a master metal shaper.



<b>Metal Fabricator's Handbook</b> (175 pages).....	<b>\$23.95</b>
<b>Sheet Metal Handbook</b> (144 pages).....	<b>\$23.95</b>
<b>Welder's Handbook</b> (160 pages).....	<b>\$19.95</b>
<b>Ultimate Sheet Metal Fabrication</b> (144 pages).....	<b>\$24.95</b>
<b>Advanced Sheet Metal Fabrication</b> (144 pages).....	<b>\$27.95</b>
<b>Sheet Metal Fabrication Basics-Biker Basics</b> (144 pages).....	<b>\$27.95</b>
<b>Advanced Custom Motorcycle Assembly &amp; Fabrication</b> (144 pages).....	<b>\$27.95</b>
<b>Full-bore Sheet Metal</b> (143 pages).....	<b>\$34.95</b>

## Educational Videos

Ron Covell brings vast knowledge and many years of experience to his viewers. These videos cover a variety of topics ranging from gas welding techniques and hammer forming, to the tools required to do the job.



<b>English Wheel Techniques DVD</b> (86 min) .....	<b>\$40.00</b>
<b>Basic Techniques for Working with Steel DVD</b> (100 min) .....	<b>\$40.00</b>
<b>MIG Welding Made Easy DVD</b> (70 min) .....	<b>\$40.00</b>
<b>Scratch-Building a Fender DVD</b> (119 min) .....	<b>\$40.00</b>
<b>TIG Welding Basics DVD</b> (70 min) .....	<b>\$40.00</b>
<b>Advanced TIG Welding DVD</b> (111 min) .....	<b>\$40.00</b>
<b>Chopping &amp; Sectioning DVD</b> (100 min) .....	<b>\$40.00</b>
<b>Shaping Aluminum with Hand Tools DVD</b> (105 min).....	<b>\$40.00</b>
<b>Making Motorcycle Gas Tanks DVD</b> (167 min) .....	<b>\$60.00</b>
<b>High Power Metal Shaping Workshop DVD</b> (80 min) .....	<b>\$40.00</b>
<b>Planishing Hammer Basics</b> (54 min) .....	<b>\$40.00</b>
<b>Building a Roadster Body Buck</b> (70 min).....	<b>\$40.00</b>

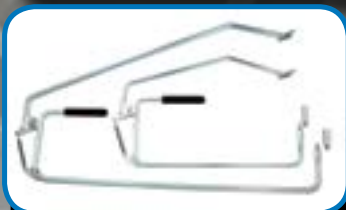
## Trick Tools Layout Tool Kit

The Trick Tools 4 Piece Layout Kit features an Automatic Center Punch, Retractable Scribe, Retractable Knife, Ball Point Pen and Storage Pouch. These rugged anodized construction will stand up to years of use in your shop! The Trick Tools logo is imprinted on each barrel. These tools are perfect for fabricators in the race car, automotive, street rod, motorcycle, education, arts & crafts, aerospace, fire & rescue, transportation, and manufacturing industries.



<b>Trick Tools Layout Kit</b> (3 Piece: Automatic Center Punch, Retractable Scribe, Retractable Knife and Storage Pouch).....	<b>\$44.99</b>
<b>Trick Tools Layout Kit</b> (4 Piece: Automatic Center Punch, Retractable Scribe, Retractable Knife, Ball Point Pen and Storage Pouch).....	<b>\$59.99</b>

## Bullseye Picks



Originally designed for the collision/dent repair trade, bullseye picks also work very well for restoration projects. In our trade, custom metal shaping & fabrication, they are ideal for the fabricator who needs to metal finish the area surrounding a weld seam on fabricated body work.

- **Metal Finishing:** Bullseye picks make it easy to accurately repair dents like a professional. The open sight (similar to a gun sight) allows the user to strike a series of very accurate, light blows to raise low areas.
- **Return Spring:** Allows you to hit quickly, with the advantage of knowing where the pick (or blunt tip) will strike.
- **Designed for use in hard-to-reach areas:** such as around braces, gussets and other blind areas.

<b>15" Reach Bullseye Pick</b> .....	<b>\$109.95</b>
<b>25" Reach Bullseye Pick</b> .....	<b>\$119.95</b>

## Metal Shaping Station

Finance as low as \$54.00 / Month

This ProLine metal shaping station is built for the professional metal shaper with the ultimate quality in mind. The powder coated base and upright stand are 29" tall for a comfortable working height once a tool is installed. A variety of tools can be utilized with the included adapters which fit into a morse taper for a very solid feel. A quick release lever eliminates struggling during tool changes. The deluxe model features a nickel plated tool rack to keep things close at hand as well as an angle adapter for 90° and 45° mounting.



<b>Deluxe Shaping Station</b> (includes stand, tool rack, angle adapter, and 3 tooling adapters) .....	<b>\$975.00</b>
<b>ProLine Package Shaping Station</b> .....	<b>\$1,957.00</b>

(includes stand, tool rack, angle adapter, 3 tooling adapters, set of 3 body hammers, barrel mallet, bossing mallet, 12" shot bag and plate, set of tapered T-dollies, radius gauge)

## Slappers



These slappers are great for forming material over a T-dolly or forming head. Their leather face protects the finish of the material and will be useful for a variety of metal shaping applications.

<b>Flat Face Slapper</b> .....	<b>\$49.00</b>
<b>Curved Face Slapper</b> .....	<b>\$49.00</b>
<b>Gentle Face Slapper</b> .....	<b>\$49.00</b>
<b>Slapper Kit</b> (Includes three listed above).....	<b>\$140.00</b>

## Mallets and Shot Bags



These high quality bossing mallets are made from a non-marring plastic and are offered in several sizes so you can select a hammer perfectly suited for the job at hand. Each mallet will form deep bowl shapes quickly and easily.



<b>Small Bossing Mallet</b> (right).....	<b>\$36.00</b>
<b>Medium Bossing Mallet</b> (left).....	<b>\$40.00</b>
<b>Large Bossing Mallet</b> (middle).....	<b>\$48.00</b>
<b>Bossing Mallet Kit</b> (Includes three listed above).....	<b>\$117.00</b>
<b>6" Round Shot Bag</b> .....	<b>\$20.00</b>
<b>12" Round Shot Bag</b> .....	<b>\$39.00</b>
<b>18" Round Shot Bag</b> .....	<b>\$53.00</b>
<b>18" Rectangle Shot Bag</b> .....	<b>\$65.00</b>

## Tapered and Straight T-Dollies



Custom metal workers know that you can never have enough dollies. These Tapered and Straight T-Dollies allow for a variety of custom shapes to be created with consistency. Use them by hand, in a vice or in a metal shaping station. These T-Dollies will help to make your next project go together faster & more easily.



<b>Small Tapered Dolly</b> .....	<b>\$105.00</b>
<b>Medium Tapered Dolly</b> .....	<b>\$115.00</b>
<b>Large Tapered Dolly</b> .....	<b>\$125.00</b>
<b>Small T-Dolly</b> .....	<b>\$23.00</b>
<b>Medium T-Dolly</b> .....	<b>\$29.00</b>
<b>Large T-Dolly</b> .....	<b>\$36.00</b>





## Contour Gauges



12" Contour Gauge

When shaping metal, often complicated contours need to be duplicated. These two styles of gauges are the perfect way to ensure the new part is an exact copy of the old. The 12" sliding pin version helps model complicated shapes. The long snake-like gauges are perfect for long panels such as hoods, roof skins, fenders, airplane wings, and more. Each saves valuable time on projects and can be used over and over again.



Scan for Video

- 12" Contour Gauge with sliding pins .....\$79.99
- 37" Curve Template.....\$49.99
- 107" Curve Template.....\$99.99



37" Curve Template

## Shrinker/Stretcher Tools

Looking to form compound curves in metal? These shrinker/stretcher tools can form curves down to a 3" radius in a variety of metals: mild steel (up to 18 gauge), stainless steel (up to 20 gauge), and aluminum (up to .063). The Shrinker forms outside radius curves and the Stretcher forms inside radius curves. They are perfect for forming complicated patch pieces for such areas as rear wheel arches, dog legs, window edges, and trunk edges. Made in the U.S.A. by Lancaster.

- Shrinker Unit Only .....\$185.00
- Stretcher Unit Only .....\$185.00
- Combo Unit (1 body with both sets of jaws) .....\$270.00
- Combo Unit #2 (Both bodies and jaws) .....\$365.00
- Replacement Jaws Sets (shrinker or stretcher) .....\$115.00

### Hand Operated



### Foot Operated

The hands free operation of this MetalAce Shrinker/Stretcher allows for better control and feel for your metal work with much faster results! Mobile unit on casters allows easy transport around the shop for access wherever needed.

- 18 ga mild steel capacity
- Heavy duty return spring means quick action and long life
- Working height is 47-1/2"

- Shrinker/Stretcher Deluxe Kit (as shown).....\$689.00
- Stand Only.....\$349.00

## Deep Throat Shrinker/Stretcher

The JS Tools KSM155 is a professional quality foot-activated shrinker and stretcher unit. With a 6 inch throat depth, it makes forming compound panels quick and easy. Shrinker and stretcher jaws swap out in seconds with the included Allen wrench.

- Mild steel capacity: 16 gauge
- 6" deep throat
- Quick change jaws included
- Foot operation to leave hands free
- One year warranty
- High quality Swedish import

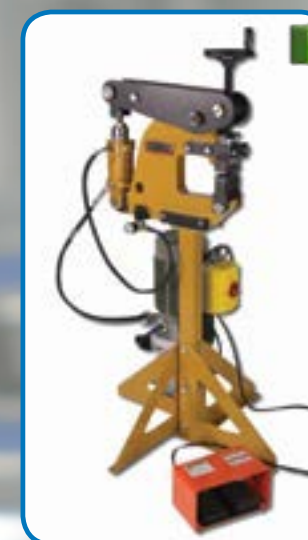


Scan for Video

- KSM 155 Pro Shrinker/Stretcher (includes steel shrinker and stretcher jaws).....\$2,900.00
- KSM 003 Shrinker Jaws for Aluminum.....\$490.00
- KSM 004 Stretcher Jaws for Aluminum.....\$490.00



Finance as low as \$55.00 / Month



Finance as low as \$157.00 / Month

## Baileigh

The Baileigh MSS-14H is the most heavy duty powered shrinker stretcher in our line up. Featuring a 7 inch throat depth and 14 gauge mild steel, 12 gauge aluminum capacity - this shrinker/stretcher can handle the most demanding jobs.

The machine is operated by a foot pedal control, leaving the operators hands free to guide the work piece. The down stroke is powered by hydraulics, featuring a 110v electric pump, and the return stroke is assisted by air pressure for quicker operation. This system allows for between 30 and 40 strokes per minute.

- Mild steel capacity: 14 gauge
- Shrink and stretch jaws included
- Aluminum capacity: 12 gauge
- Ultra heavy duty construction

- MSS-14H Power Shrinker/Stretcher.....\$5,695.00

## Planishing Hammers

### ProLine

Finance as low as \$119.00 / Month

This portable planishing hammer is designed for forming or planishing light gauge sheet metal. The yoke is 22" deep and 12-3/8" from the bottom die to the bottom of the yoke. It comes with one top die and one each 3", 12" and 36" radii bottom die, a die extraction tool, oil and special oil bottle, stainless steel engraved die rack with grommets and regulator. The frame is powder coated. The unit is shipped with some assembly required.

- Portable Planishing Hammer (w/out optional die rack).....\$4,345.00



24"

Finance as low as \$213.00 / Month

The lower arm on these cast iron floor models can be lowered to accommodate an optional bottom anvil for deep parts. Other special anvils are available, which allow the operator to move the lower arm off-center without losing position. They feature heavy duty pneumatic motors and sturdy cast iron frames.

- 24" Cast Iron Floor Model Planishing Hammer .....\$7,750.00
- 36" Cast Iron Floor Model Planishing Hammer .....\$9,995.00

## Mittler Bros.

These Mittler Brothers Planishing Hammers will add productivity to your metal working. Included with these machines is a set of 9 radius dies that will fit most applications. Excellent beginning hammers to shape steel or aluminum.

- 12" or 24" throat
- Rugged tubular construction
- 9 radius dies: Flat, 3/4", 1-1/2", 2", 3", 4", 6", 8", and 12"
- 4,600 hits per minute @100 psi
- Foot control allows for dual hand control
- Rear adjuster sets load force and allows for fast die changes

- 12" Benchtop Planishing Hammer (w/ 9 radius anvils).....\$850.00
- 24" Benchtop Planishing Hammer (w/ 9 radius anvils).....\$999.00







## Power Hammer

Finance as low as \$181.00 / Month

The ProLine Minimax does the work of a large and expensive Pullmax machine without taking up valuable shop space. This unit accepts Pullmax style tooling for shrinking, beading, edge setting, planishing and more. It is the perfect compliment to our English wheels or planishing hammers. See our website for a full range of Pullmax compatible tooling.

- Mild steel capacity 16 gauge
- Aluminum capacity 11 gauge
- Variable speed
- 18" throat
- 1,150 strokes per minute
- Powder-coated finish
- Includes straight and contour fences
- One year warranty



Scan for Video



MiniMax Variable Speed Power Hammer (110v) ..... \$5,100.00  
 MiniMax Deluxe Power Hammer (includes rolling stand, thumbnail shrink dies, 110v) . . \$6,590.00

## Classic English Wheels

Finance as low as \$37.00 / Month



The MetalAce 22B is our most popular in-home English Wheel. Trick out your custom-built bike or complete hobby projects without breaking the bank. Provides outstanding performance on small jobs like motorcycle tanks, tank covers, seat cowls and aircraft fillets. Versatile use: mount on bench, clamp in vise or use with optional welded stand.

- Capacity of 18 ga. steel and .090" soft aluminum
- Throat: 22"
- Quick release cam on lower anvil
- Anvil yoke has an adjustable axle support so the anvil wheel can be trued to the upper wheel
- Weight: 73 lbs.
- Standard working height (from bench): 16-1/2"
- Standard working height (with opt stand): 45"
- Upper wheel: 8" dia. x 2" wide 1045 alloy steel billet, polished to a high surface finish
- 3.25" radius anvil wheel standard

22B Benchtop English Wheel (includes 3.25" R anvil wheel).....\$695.00  
 Discovery Kit (includes 22B, 8.50" R, 3.25" R and flat anvil wheels, plus shot bag, mallet, radius gauge and instruction DVD)...\$995.00  
 22B Deluxe English Wheel (includes floor stand with die rack, 1.0", 2.50", 3.25", 5.0", 8.50" radii and flat anvils).....\$1,345.00  
 22B Floor Stand (with die rack).....\$200.00

Finance as low as \$79.00 / Month

The 30F English Wheel from MetalAce features a smaller 30 inch throat compared to its 44F companion, but offers enough muscle to form up to 12 ga. mild steel and .125" aluminum, making this one of the strongest English Wheels on the market today. The standard retractable handle permits easy portability when moving to and from the work area, while the rubber feet provide optimum grip on the work surface when in use.

- Capacity of 12 ga. steel and 1/8" aluminum
- Throat: 30"
- Quick release cam on lower anvil
- Anvil yoke has an adjustable axle support so the anvil wheel can be trued to the upper wheel
- Weight: 340 lbs.
- Standard working height: 48"
- Upper wheel: 8" dia. x 3" wide 1045 alloy steel billet, polished to a high surface finish



30F Assembled English Wheel (includes 2.5", 3.75", 6.0", 12.0", 24.0" radii and flat anvil wheels).....\$2,895.00  
 Covell Signature Line 30F English Wheel (includes 2.5", 3.75", 6.0", 12.0", 24.0" radii and flat anvil wheels).....\$3,495.00

Finance as low as \$71.00 / Month

The sturdy welded frame of the Metal Ace 44F English Wheel offers metal shaping capabilities for racing, auto restoration and aircraft rebuilding needs. Although the Metal Ace 44F is portable, its sturdy enough to handle most any metal shaping need. Large enough for complete body panels, the 44F English wheel is also perfect for smoothing a wrinkled quarter or rocker panel.

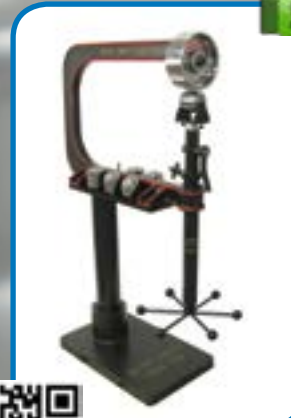
- Capacity of 16 gauge steel and 1/8" soft aluminum
- Throat: 44"
- Quick release cam on lower anvil
- Anvil yoke is adjustable on both sides of the axle support so the anvil can be trued to the upper wheel
- Features can be rolled into the center of an 88" panel
- Includes anvil wheel storage rack
- Upper wheel: 8" dia. x 3" wide 1045 alloy steel billet, polished to a high surface finish
- Height: 73" • Width: 59"
- Weight: approx. 350 lbs.



44F Assembled English Wheel (includes 2.5", 3.75", 6.0", 12.0", 24.0" radii and flat anvil wheels).....\$2,895.00  
 44F U-Weld English Wheel Kit.....\$1,695.00

## Imperial

Finance as low as \$94.00 / Month



Constructed of cast iron, and featuring a generous 28" throat, the MetalAce Imperial 28F works for body panels, motorcycle fenders, aircraft parts and more! With our large line-up of shaping wheels, you can even add the finest detail with finesse. Our latest design allows for our 2" wide upper wheel and anvils that are perfect for smaller jobs.

- Capacity of 16 gauge steel and 1/8" soft aluminum
- Throat: 28"
- Quick release cam on lower anvil
- Anvil yoke is adjustable on both sides of the axle support so the anvil can be trued to the upper wheel
- Weight: approx. 560 lbs.
- Standard working height: 48.5"
- Upper wheel: 8" dia. x 3" wide 1045 steel polished to a high surface finish
- Rigid cast iron frame provides a sturdy, vibration-free platform for your job



Scan for Video

Imperial 28F English Wheel (includes 2" wide, 1.00", 2.50", 3.25", 5.0", 8.50" and Flat radius, anvil wheels).....\$3,500.00

Finance as low as \$248.00 / Month

The MetalAce 44F is the "Big Daddy" of English Wheels. Constructed of massive cast iron, and featuring an immense 44" throat, it lets you shape full body panels, muscle-car hoods or a flawless flared fender of up to 88" for your vintage roadster. The toughest English wheel you can buy, the Imperial 44F provides ample working room for any contour, any job. With our large line-up of shaping wheels in both 3" and 2" widths, you can even add the finest detail with finesse.

- Capacity of 16 gauge steel and 3/16" soft aluminum
- Throat: 44"
- Quick release cam on lower anvil
- Anvil yoke is adjustable on both sides of the axle support so the anvil can be trued to the upper wheel
- Weight: approx. 1,850 lbs.
- Standard working height: 48.5"
- Upper wheel: 8" dia. x 3" wide 1045 steel polished to a high surface finish
- Rigid cast iron frame provides a sturdy, vibration-free platform for your job
- Screw lift and upper anvil wheel rotate 90 degrees for larger panels



Imperial 44F English Wheel (includes 3" wide, 2.50", 3.75", 6.0", 12.0", 24.0" and Flat radius, anvil wheels)..... \$9,000.00





B-2



## Throatless Shear

This is the famous Beverly Shear that top custom car builders use. Throatless design lets you turn your work at any angle for straight, curved, even irregular cuts with ease and accuracy. Powerful leverage through rack and pinion gearing. Easily cuts mild steel and stainless using tool steel blades (adjustable for wear) which provide burr-free cuts. Drilled for work-bench mounting.

SS-2 and SS-3 slitting shears are also available for making straight cuts in long sheets of material or for shearing off pieces of flat stock.

- B-1 Beverly Shear ..... \$568.00
- B-2 Beverly Shear ..... \$792.00
- B-3 Beverly Shear ..... \$1,145.00
- SS-2 Beverly Slitting Shear ..... \$374.00
- SS-3 Beverly Slitting Shear ..... \$529.00



Model	B-1	B-2	B-3	SS-2	SS-3
Capacity (Mild Steel)	14 ga.	10 ga.	3/16"	10 ga.	3/16"
Capacity (Stainless Steel)	18 ga.	14 ga.	10 ga.	14 ga.	10 ga.
Blade Length	4.25"	4.375"	5.375"	3.5"	4.25"
Weight	18 lbs.	36 lbs.	58 lbs.	11 lbs.	25 lbs.

## Hand Notcher

The Tennsmith Model 16-18 notcher is a versatile, heavy duty bench tool for shearing, notching, and piercing work. The heavy cast iron construction allows the tool to be used to notch six inches of 16 ga. material. This notcher can be ordered with flange blades for forming reinforced corners in boxes, pans, and chassis corners.

- 16-18 Bench Hand Notcher w/ Regular Blades ..... \$895.00
- 16-18 Bench Hand Notcher w/ Box Flange Blades ..... \$985.00
- 16-18 Optional Floor Pedestal ..... \$295.00



## Shears & Nibblers



FEIN nibblers are among the most compact power tools for cutting trapezoidal and corrugated sheet metals, as well as profiles. Their slim design makes them extremely versatile and precise in the curves. The working direction can be altered tool-free. FEIN shears are suited for quick and warp-free cut-outs in sheet metals, profiles, and even pipes. The open front cutting head provides an optimal view of the cutting line, making precise work possible. Uncompromised quality machines for sheet metal shops, race shops, HVAC work, and electrical installation.



- BLS 1.6x Shear (16 ga. 110v) **SALE!** ..... \$895.44
- BLS 2.5 Shear (12 ga. 110v) **SALE!** ..... \$1,011.36
- BLS 3.5 Shear (10 ga. 110v) **SALE!** ..... \$1,946.28
- BLS 4.2 Shear (8 ga. 110v) **SALE!** ..... \$2,357.04
- BLK 1.3CS Nibbler (18 ga. 110v) **SALE!** ..... \$659.00
- BLK 1.6 Nibbler (16 ga. 110v) **SALE!** ..... \$659.20
- BLK 3.5 Nibbler (10 ga. 110v) **SALE!** ..... \$1,865.64
- BLK 5.0 Nibbler (6 ga. 110v) **SALE!** ..... \$2,670.36

## Radius Brakes

**MetalAce**

Finance as low as \$79.00 / Month

This sheet metal radius brake is the perfect solution for forming radius bends in mild steel and aluminum. Stress and cracking of material is minimized due to the unique design of the apron, which swings outside the radius and rolls across the material. Especially useful in race car fabrication, as well as automotive and aircraft restoration work, this brake is an excellent addition to any sheet metal fabrication shop.

- 6 radius rollers included with 4' machine: 1", 2", 3", 4", 5" and 6-5/8" OD
- 5 radius rollers included with 6' & 8' machine: 1", 2", 2-1/2", 3" and 4" OD
- Convenient radius roll storage on machine
- Quick tooling change over
- Adjustable Counterweight



Model No.	4FT.	6FT.	8FT.
Mild Steel Capacity	16 ga. (.063")	16 ga. (.063")	18 ga. (.049")
Aluminum Capacity	.090"	.090"	.063"
Maximum Bend Length	48"	72"	96"
Weight	750 lbs.	850 lbs.	1,090 lbs.

- 4-Foot Radius Brake ..... \$2,895.00
- 6-Foot Radius Brake ..... \$2,995.00
- 8-Foot Radius Brake ..... \$3,495.00
- MetalAce Radius Brake Back Gauge ..... \$195.00

## Manual Slip Rolls



Tennsmith's slip rolls combine precision-turned, ground, and polished high carbon steel rolls with heavy-duty, cast iron end frames. Features include large roll adjusting screws, scales for speeding repeat set-up, and a front mounted handle to lift the upper roll for material removal. Wire grooves are also standard. 3-Driven roll machines allow for greater traction on hard to bend materials.

- SR24, 24" Slip Roll (2 driven rolls) ..... \$780.00
- SR324, 24" Slip Roll (3 driven rolls) ..... \$945.00
- SR36, 36" Slip Roll (2 driven rolls) ..... \$895.00
- SR336, 36" Slip Roll (3 driven rolls) ..... \$1,045.00
- SR42, 42" Slip Roll (2 driven rolls) ..... \$995.00
- SR342, 42" Slip Roll (3 driven rolls) ..... \$1,150.00
- SR48, 48" Slip Roll (3 driven rolls) ..... \$3,550.00

Model No.	SR24/SR324	SR36/SR336	SR42/SR342	SR48
Capacity (Mild Steel)	20 ga.	22 ga.	24 ga.	16 ga.
Max. Forming Length	24"	36"	42"	49"
Diameter of Rolls	2"	2"	2"	3"
Min. Forming Radius	1"	1"	1"	1-1/2"
Wire Grooves	3/16", 1/4", 5/16"	3/16", 1/4", 5/16"	1/4", 5/16", 3/8"	3/8", 1/2", 5/8"
Ship Weight	190 lbs.	250 lbs.	270 lbs.	775 lbs.

## Powered Slip Rolls

Finance as low as \$222.00 / Month

National's electric powered Slip Rolls feature 3 inch power rolls that are designed for simple operation. All three rolls are power driven and come with a standard forward and reverse drum switch. These machines also feature a quick release upper roll, positive chain drive, heavy duty gear box capable of rolling up to 16 gauge mild steel, front guard for additional safety, and a heavy duty storage stand. Available in 110/220v 1 phase and 220/440v 3 phase.



- NR4816 (48 inch working length, 16 gauge mild steel capacity) ..... \$6,630.00
- NR7216 (72 inch working length, 16 gauge mild steel capacity) ..... \$8,058.00





## Magnetic Sheet Metal Brake

The Magna Bend electromagnetic brake by Roper Whitney offers performance no conventional bending brake can match. The unique design of the clamping system eliminates typical interference points of standard machines. The rugged simple construction incorporates only one moving part to assure low maintenance and versatility for light duty forming. The included tooling allows for a wide variety of complex shapes to be created right out of the box including rolled edges up 330 degrees, partial length bends, closed shapes, and unlimited box depths.

- 48" 18 ga mild steel capacity
- Unlimited box depth
- 110v 1ph power for easy placement
- Full length bar and individual fingers included: 52-1/2, 26, 12, 6, 4, 3, 2, 1-1/2, 1, and 3/4"
- Back gauge for repeatability
- Bend angle gauge for precise bends



Finance as low as \$81.00 / Month

Magnetic Sheet Metal Brake .....\$2,950.00

## Racer Brake

## Boyd-Built



Finance as low as \$51.00 / Month

This Boyd-Built 7 foot racer sheet metal brake is ideal for race car bodies, HVAC work, and more. With features such as a 1 inch radius bar, cam-lock design, bronze hinge bushings, adjustable tension bars, adjustable counterweights, and plate steel construction, Boyd-Built brakes are among the highest quality fabricated sheet metal brakes on the market.

SPECIFICATIONS	7FT.
Mild Steel Capacity	20 ga.
Aluminum Capacity	.060"
Minimum Flange @ Capacity	5/8"
Weight	495 lbs
Price	\$1,850.00

## Ultimate Box & Pan Brake

The Mittler Bros Ultimate Box & Pan Brake features a unique "3 Finger" design. This incorporates movable fingers on the bed and apron, as well as the usual upper fingers. This new design allows the operator to make bend combinations that were extremely difficult, if not impossible, in the past. Unit ships standard with: 1", 2", 3", 6", 12", 24" Upper Fingers, Bed Fingers, and Apron (leaf) Angles. Contact us for optional accessories.



CAPACITY	16 ga. / 18 ga. mild steel
BENDING LENGTH	48" / 72"
MAXIMUM DEPTH OF BOX	3-1/2"
MAXIMUM LIFT OF BEAM	1-1/4"
FRONT TO REAR ADJUSTMENT	7/8"
MINIMUM REVERSE BEND	1/2"
MINIMUM FLANGE CAPACITY	1"
SHIPPING WEIGHT	550/850 LBS



Finance as low as \$89.00 / Month

Ultimate Box & Pan Brake (48" benchtop).....\$3,250.00  
 48" Floor Stand.....\$275.00  
 Ultimate Box & Pan Brake (72" floor).....\$5,775.00

## Brakes and Shears

## Tennsmith

Tennsmith offers a wide variety of quality brakes and shears. These heavy duty units offer industry leading features such as replaceable nose bars, high-chromium blades, and cast frame construction. A wide range of machines covers 4' to 12' widths, and 22 gauge through 12 gauge capacity. These U.S.A. made machines feature a 3-year manufacturer's warranty.

### Shears

MODEL NO.	MILD STEEL CAPACITY	CUTTING LENGTH	PRICE
36 (Foot Shear)	16 ga.	36"	\$2,150.00
36A (Air)	16 ga.	36"	\$4,200.00
52 (Foot)	16 ga.	52"	\$2,860.00
52A (Air)	16 ga.	52"	\$5,360.00
52H (Hydraulic)	16 ga.	52"	\$6,525.00
SK1020 (Hand)	20 ga.	120"	\$10,500.00



Finance as low as \$78.00 / Month

### Hand Brakes



HB121-18

Finance as low as \$150.00 / Month

MODEL NO.	MILD STEEL CAPACITY	BENDING LENGTH	PRICE
S48-22*	22 ga.	48"	\$695.00
HBS48-16*	16 ga.	48"	\$1,295.00
HB48-12	12 ga.	48"	\$3,465.00
HB73-16	16 ga.	73"	\$3,575.00
HB97-18	18 ga.	97"	\$3,780.00
HB97-16	16 ga.	97"	\$4,300.00
HB97-12	12 ga.	97"	\$6,900.00
HB121-18	18 ga.	121"	\$5,460.00
HB121-16	16 ga.	121"	\$6,500.00
HB121-14	14 ga.	121"	\$6,950.00
HB145-18	18 ga.	145"	\$7,300.00

\*Benchtop Units- optional floor stand \$235.00

### Box & Pan Brakes

MODEL NO.	MILD STEEL CAPACITY	BENDING LENGTH	MAX. DEPTH OF BOX	PRICE
U48-22*	22 ga.	48"	3"	\$895.00
HBU48-16*	16 ga.	48"	3"	\$1,465.00
HBU48-12	12 ga.	48"	4"	\$4,095.00
HBU72-16	16 ga.	72"	4"	\$4,595.00

\*Benchtop Units- optional floor stand \$235.00



HBU48-12

Finance as low as \$113.00 / Month



F6 48-12

Finance as low as \$148.00 / Month

### Deep Box & Pan Brakes

MODEL NO.	MILD STEEL CAPACITY	BENDING LENGTH	MAX. DEPTH OF BOX	PRICE
F6 48-12	12 ga.	48-1/4"	6"	\$5,395.00
F6 72-12	12 ga.	73"	6"	\$6,495.00
F6 96-12	12 ga.	97"	6"	\$7,995.00
F6 120-14	14 ga.	121"	6"	\$9,595.00



## Ironworkers

The Edwards Ironworker is a compact, well designed, well built, uncomplicated hydraulic ironworker. All machines work on the same principle with the center pulling straight down on the work. All tooling moves in a perfectly vertical way. There is no arc of tool against material to be cut or punched. All stations operate as a unit so you can move from punch to shear to notcher to angle shear without changing or adding any new equipment.

The line starts with the "JAWS JR." 25 Ton unit which gives you a dedicated punch station and one open station for tooling of your choice. The 40, 50 and 55 ton units also include plate and angle shears. The 65 ton machine has a huge 24" plate shear, angle shear, coper notcher, punch station and open station as well. Please call for more information on other models up to 120 tons and available options.

Capacities	Jaws Jr 25 ton	Jaws IV 40 ton	Jaws IV 50 ton	Jaws IV 55 ton	Jaws V 65 ton	Jaws IV 100 ton
Punch	1"- 5/16"	1"- 1/2"	1"- 5/8"	1-1/16"- 5/8"	1-1/16"- 3/4"	1-1/16"- 1"
Plate Shear	1/4" x 6" (opt.)	3/8" x 10"	1/2" x 10"	3/8" x 14"	3/8" x 24"	3/4" x 14"
Angle Shear	2" x 1/4" (opt.)	3" x 1/4"	4" x 1/4"	4" x 1/4"	5" x 3/8"	6" x 1/2"



Scan for Video

Jaws Jr. 25 ton (110/220v 1 hp 1 ph) <b>SALE!</b> .....	\$5,031.20
Jaws IV 40 ton (220v 5 hp 3 ph, add \$300 for 1 ph) <b>SALE!</b> .....	\$7,406.20
Jaws IV 50 ton (220v 5 hp 3 ph, add \$300 for 1 ph) <b>SALE!</b> .....	\$8,451.20
Jaws IV 55 ton (220v 5 hp 3 ph, add \$300 for 1 ph) <b>SALE!</b> .....	\$9,021.20
Jaws V 65 ton (220v 7.5 hp 3 ph, add \$300 for 1 ph) <b>SALE!</b> .....	\$16,146.20
Jaws IV 100 ton (220v 7.5 hp 3 ph, add \$300 for 1 ph) <b>SALE!</b> .....	\$17,571.20
Hydraulic Accessory Pack up to 60 ton (Required for use of accessories).....	\$750.00
Hydraulic Accessory Pack 65 ton and up (Required for use of accessories).....	\$1,000.00

Finance as low as \$222.00 / Month



55 ton

## Edwards

## H-Frame Presses / Accessory



20 ton

The Edwards H-Frame presses were designed as full featured presses for most shop applications. The heavy duty steel frame, rolling cylinder and large working area makes them extremely versatile. They do not have their own power supply, instead these machines quick-couple to either an Edwards Ironworker with factory installed Hydraulic Accessory Control Package or an Edwards Porta-Power unit. Comes with easy-to-use hand/jog controls.

H-Frame Press Benchtop Accessory, 20 ton.....	\$1,896.00
H-Frame Press Accessory, 40 ton.....	\$3,996.00



## Hydraulic Tube Bender / Accessory

The Edwards hydraulic tubing bender is a great accessory to one of their ironworkers. It can be powered by properly equipped 40 through 120 ton Edwards Ironworker models, Elite Ironworker series machines or the standalone Edwards Porta Power unit. This bender utilizes a quick-connect system and has enough power to easily bend 2 inch Schedule 40 pipe, 2.5 inch O.D. tube and 2 inch square.

Hydraulic Tubing Bender Accessory.....	\$1,896.00
--	------------



## Scotchman

Scotchman Ironworkers are versatile and dependable ironworkers with a variety of unique options. Scotchman's unique component tool design will accept a large range of standard tools and special tooling, and can be used as a power source where the customer builds his own tooling. Punch, angle, and flat bar shears are standard, but the beauty of this machine is that it can adapt to whatever your customer brings in the door.



Finance as low as \$176.00 / Month

- Angle shear capacity: 3" x 3" x 5/16" at 90° and 2" x 2" x 1/4" at 45°
- Bar shear capacity: 3/8" x 6"
- Rod shear capacity: 3/4" round
- 4-1/4" throat depth
- 45 ton punch station (1-1/8" in 1/2")
- 110v, 1 ph electric
- Keyed punch ram for safety
- 2" die holder
- Punch nut with wrench and stripper
- One round punch & die: max. dia. 1"
- Adjustable electric stroke control with scale
- Three-in-one combination tool
- Tool table work area
- Machine stand with punch & die & tooling storage rack
- All guards necessary to comply with ANSI B 11-5 standards
- Three-year warranty



Porta-Fab 45 ton Ironworker (add \$1,000 for 220v 1ph).....\$6,390.00

- Angle shear 4" x 4" x 3/8" at 90° and 2" x 2" x 3/8" at 45°
- 14" flat bar shear with 4-way reversible blade (3/4" x 4", 1/2" x 8", 3/8" x 10", 1/4" x 14")
- Rectangular notcher, (2-1/2" x 3" x 5/16", 2-1/2" x 2-3/4" x 3/8")
- 4" throat depth
- 230/460v, 3 ph electric (must specify voltage)
- 50 ton punch station with 3-station revolving turret (1-1/4" in 1/2")
- Keyed punch ram for safety
- Three 2" die holders, three punch nuts with wrench and three strippers
- One round punch & die: max. dia. 1"
- Adjustable stroke control
- Tool table work area
- Electrical box supplied with emergency palm button and lock-out tag-out accommodations
- All guards necessary to comply with ANSI B 11-5 standards
- Forklift accommodations
- Three-year warranty



5014-TM 50 ton 3 Station Turret Ironworker (less angle shear) (add \$400 for 1 ph).....\$12,190.00



## Benchtop Press Brake

This compact benchtop press brake by Bend Press is the perfect solution for the fabricator needing to bend small sections of sheet metal and plate steel. Utilizing a common 20 ton bottle jack, this press requires no outside power source or specialized pumps. Ideal for making suspension and body support brackets. With its relatively small footprint this press is also a perfect fit for those with limited working space. And with the optional 4-sided V-die made from 4140 tool steel, tight radius bends can be made in lighter weight materials. Bottle jack not included.

### CAPACITIES

- 20 tons maximum
- 8" in 3/8" mild steel
- 10" in 1/4" mild steel
- 4" in 1/2" mild steel
- 9" in 5/16" mild steel
- 2" in 5/8" mild steel



Scan for Video

Benchtop Press Brake.....	\$399.95
4-way V-die (1/4", 1/2", 3/4", and 1" openings).....	\$199.95
H-frame Press Option.....	\$199.95
Stroke & Depth Gauges.....	\$99.95





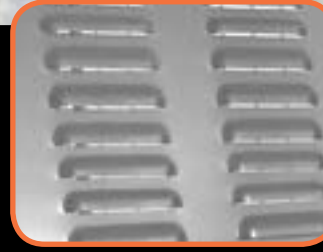


Finance as low as \$47.00 / Month

## Louver Press Kit

The Mittler Brothers Louver Press is a profit making tool. Each kit includes a 10 ton hydraulic ram, precision slide assembly, die mounting plate, one set of your choice of louver dies, bill of materials, blueprints, and complete instructions for building a 48" throat depth press.

- Punches steel or aluminum
- Accepts all MB bench press tooling
- Up to 5" long louvers
- 16 gauge capacity



Complete Louver Punch Kit (with choice of one louver punch set).....	\$1,725.00
Additional 1", 2", or 3" Louver Die.....	\$475.00
Additional 4" or 5" Louver Die.....	\$495.00
Air/Hydraulic Pump w/ 20' Hose & Fitting.....	\$420.00



## 10 Ton Bench Press

This versatile tool is one of the latest offerings from Mittler Brothers and is sure to increase productivity. Use it with ironworker tooling or as a heavy duty arbor press. The 10 ton Bench Press can handle a 3" punch and flare or louver through 14 gauge mild steel. Can be used with most common hydraulic pumps.

- Accepts all MB bench press tooling
- Rugged construction
- 25" extra deep throat
- 6" tool opening
- 4" stroke, 10 ton cylinder
- Includes a slug ejector and spring loaded center



Finance as low as \$64.00 / Month

10 Ton Hydraulic Bench Press.....	\$2,325.00
Floor Stand w/ Casters.....	\$325.00
Electric/Hydraulic Pump w/ 10' Hose.....	\$1,590.00

## Dimple Dies



These dimple dies from JMR, also known as flare tools, are used to improve the strength and appearance of a panel and will flange or flare an existing hole in sheet metal up to .125" 4130 Chrome Moly. Each size is self centering, so they work great in a press or Ironworker. Precision machined from hardened tool steel for years of use.

DD1007 7 Piece Dimple Die Set (1/2", 3/4", 1", 1-1/4", 1-1/2", 1-3/4", and 2").....	\$525.00
DD1005 5 Piece Dimple Die Set (1/2", 1", 1-1/2", 2" and 2-1/2").....	\$495.00
DD1004 4 Piece Dimple Die Set (1/2", 1", 1-1/2", and 2").....	\$325.00
DD1002 2 Piece Dimple Die Set (2-1/2", and 3").....	\$425.00

## Portable Punch and Die Kit



At last, a way to punch and dimple panels which are too large to fit into a press or are already welded in place. These portable dimple die kits from JMR Manufacturing allow you to punch holes and dimple both steel and aluminum. Especially useful for working on off road vehicles or job sites where transporting a press is not practical.

- 1.115", 1.362", 1.687", 1.937", and 2.375" cutter sizes included
- 10 Ton Hydraulic Cylinder
- Dimple Dies can also be used in a standard press

DDH105 Standard Hydraulic Kit (Includes five piece dimple and punch set with hand pump, ram and adapters) .....	\$795.00
DDAH105 Air/Hydraulic Kit (Includes five piece dimple and punch set with air/hydraulic pump, ram and adapters) .....	\$995.00
DDNP105 Dimple Dies, Punches, and Ram Only (Does not include pump, hose, or hydraulic fittings) .....	\$745.00

## Bench Press



- Fits punch & flare tools
- Rugged construction
- Bronze bushings
- Max capacity: 3" dia. punch & flare 16 gauge steel
- 12" deep throat
- Can be used as a standard arbor press
- Uses standard punch & dies for round, square, & oblong holes

Standard Bench Press (3 ton).....	\$595.00
Hydraulic Bench Press (5 ton).....	\$795.00
Air/Hydraulic Pump, Hose and Fitting.....	\$420.00

### ACCESSORIES

Complete Louver Assembly (w/ one die & tooling adapter) .....	\$775.00
Additional Louver Dies (1", 2", or 3").....	\$475.00 ea.
(4", or 5").....	\$495.00 ea.
90° Brake Kit .....	\$195.00
Corner Notcher Kit .....	\$195.00
Shear Kit .....	\$195.00
Corner Radius Punch (1/4", 1/2", 3/4", 1") .....	\$250.00
Shrinker / Stretcher Set.....	\$315.00
<b>PUNCH &amp; DIES</b> (heat treated tool steel with 1/32" die clearance for material up to 16 ga. mild steel)	
3/16" - 1" .....	\$90.00 ea.
Dzus Punch and Die Set .....	\$295.00
Punch & Die Mount Kit.....	\$155.00

## Punch & Flare Tools

Just drill a pilot hole for the draw bolt, then apply the tool and tighten the bolt for a smooth, flared hole in one easy step. Our Punch & Flare tool can also be used as a hole punch, simply by using the punch and male flare.



1".....	\$110.00
1-1/4".....	\$110.00
1-1/2".....	\$125.00
1-3/4".....	\$125.00
2".....	\$135.00
2-1/2".....	\$135.00
2-5/8" (excellent for aerosol cans).....	\$135.00
3".....	\$150.00

### SETS

Set 1" to 2-1/2" (6 pieces) .....	\$685.00
Set 1" to 3" (7 pieces, 2-5/8" not included) .....	\$815.00

## Flare Tools

Now, in one easy step you can flare sheet metal panels for improved strength and appearance. Precision machined from heat-treated steel for years of use. 16 gauge steel is the maximum thickness.

1/2".....	\$45.00
5/8".....	\$45.00
3/4".....	\$45.00
1".....	\$45.00
1-1/4".....	\$45.00
1-1/2".....	\$50.00
1-3/4".....	\$50.00
2".....	\$50.00
2-1/2".....	\$50.00
Set 1/2" to 2-1/2" .....	\$350.00



## Optional Accessories for Bench Press



Louver Die



90° Brake



Corner Notcher



Shear





XX



## Hand Punches

These Hand Punches by Roper Whitney can save a lot of time over drilling sheet metal and are much more accurate. Hardened, machined bearing surfaces are used in these tools to provide dependable long life. The 5 Jr punch has a standard 1-3/4" throat depth, while the XX has a deep throat configuration to punch up to 3-1/4" from the edge with up to an 1-3/8" flange. Both punches have optional bench mounting bases and come with a standard assortment of round punches and dies in a durable plastic box.

- 1.2 tons of punching power
- Plastic case with die organizer
- Adjustable Stop Gauge
- XX kit includes: 5/32", 7/32", 9/32", 11/32", 13/32", 15/32", and 17/32" round punch and die
- 5 Jr kit includes: 3/32", 1/8", 5/32", 3/16", 7/32", 1/4", and 9/32" punch and die
- Smallest available



Scan for Video



5 Jr

- 5 Jr Hand Punch Kit.....\$79.00
- 5 Jr Bench Mounting Base (not included with kit).....\$29.00
- XX Hand Punch Kit.....\$249.00
- XX Bench Mounting Base (not included with kit).....\$39.00

## Medium Duty Punches

These Roper Whitney Heavy Duty Punches are highly portable and will fit any tool chest. The leverage design of these tools assures easy linear operation. Unlike other similar tools, these punches will punch and strip inside a 90 degree arc movement of the lever. The upper handle will not disengage when moved to either extreme. An optional bench mounting base is also available.

- Two hand linear operation
- Throat Depth: 1.625"
- Throat Height: .313"
- Weight: 17.5 lbs
- No. 7A punch and dies: 1/16" - 7/16"
- No. 8 punch and dies: 1/16" - 1/2"

- No. 7A Punch (two hand linear operation).....\$295.00
- No. 7A Mounting Base.....\$180.00
- No. 8 Punch (5 ton capacity, two hand linear operation).....\$395.00
- No. 8 Mounting Base.....\$120.00
- No. 7A and 8 Punch Dies.....Starting at \$25.00 ea.

No. 7A



No. 8



No. 16



## Bench Punches

The Roper Whitney bench punches feature a heavy duty steel frame and are designed to be mounted to a sturdy work bench. The No. 16 punch is able to deliver up to 7.3 tons of punching power, more than enough to punch a 9/16 inch hole through 1/8 inch mild steel plate, while the No. 17 punch is able to generate up to 5 tons of pressure, enough to punch a 1/2 inch hole in 1/8 inch mild steel. The die shoe on both tools are adjustable to permit the proper alignment of punches and dies for punching thin sheet metal.

- No. 16 Punch (7.3 ton capacity, 3.25" throat depth, 1.75" throat height).....\$495.00
- No. 17 Punch (5 ton capacity, 6.5" throat depth, 2.125" throat height).....\$595.00
- No. 16 and 17 Punch Dies.....Starting at \$32.50 ea.

No. 17



## Rotary Punches

The Roper Whitney Rotary Style Punches produce impressive amounts of punching power. The No. 10 portable punch delivers 7.3 tons of punching power, enough to punch a 9/16 inch hole through 1/8 inch mild steel plate. The No. 12 also produces 7.3 tons of power and features a 2-1/4 inch deep x 2-1/8 inch high throat that allows for punching angles, channels, flanges and roofing purlins. The No. 20 punch delivers 20 tons of punching power, enough to punch a 1/2 inch hole through 1/2 inch mild steel plate. A 4 ft section of handle with a grip is available for purchase.

- No. 10 Punch (7.3 ton capacity, 1.5 inch throat depth, 1.125 inch throat height).....\$469.00
- No. 10 Mounting Base.....\$79.00
- No. 12 Punch (7.3 ton capacity, 2.25 inch throat depth, 2.125 inch throat height).....\$499.00
- No. 12 Mounting Base.....\$79.00
- No. 20 Punch (20 ton capacity, 2.25 inch throat depth, 1.625 inch throat height).....\$529.00

No. 12



No. 20



No. 10

## Mag Drills

Mag drills, or magnetic base drills, are great for core drilling holes in heavy steel. The electromagnetic base holds these tools in a fixed position while the cutter is fed into the material just like a standard drill press. The annular cutters used with mag drills are hollow inside which drastically cuts down on the amount of material being removed and the horsepower necessary to drill larger holes. Considerations when choosing a mag drill are maximum hole diameter needed, thickness of material being drilled, and space restrictions (i.e. low profile for truck frame drilling).



JHM USA 5



JHM USA 101



JHM Magforce



JHM Holemaker II

Model No.	Motor	Number of Speeds	Spindle Speed	Drilling Capacity	Spindle Taper	Spindle Travel	Price
JHM ShortSlugger	.75 hp	1	680 rpm	1-3/16"	3/4" Weldon Shank	2-1/2"	\$695.00
JHM Holemaker II	1.75 hp	1	450 rpm	1-3/8"	3/4" Weldon Shank	4-1/4"	\$795.00
JHM USA 101	1.75 hp	1	450 rpm	1-1/2"	3/4" Weldon Shank	2-1/2"	\$995.00
JHM Magforce	1.6 hp	1	450 rpm	1-5/8"	3/4" Weldon Shank	2-1/2"	\$1,195.00
JHM USA 5	1.8 hp	2	330, 660 rpm	2-3/8"	3/4" Weldon Shank	3-5/8"	\$1,495.00

Finance as low as \$90.00 / Month

## Drill Press



The Ellis drill press is one of the most versatile drill presses available. With standard features such as power down-feed, infinitely variable speed operation, and instantaneous reverse for tapping; its value is unsurpassed. The Ellis drill press is also extremely durable, featuring a 4" diameter column, 3" diameter quill, and a 2 hp motor. The table and base are both T-slotted.

Spindle Speeds	Drills to Center	Drilling Capacity	Tapping Capacity	Morse Taper	Spindle Travel	Spindle to Table (max.)	Spindle to Base	Table	Base
0-1200 rpm	18-1/8"	Steel: 1-1/16" Cast Iron: 1-1/4"	3/4"	No. 3	5-3/8"	27-1/4"	46-1/4"	15-7/8"	16-3/8"x 26-5/8"

- 9400 Drill Press (110v) **SALE!**.....\$3,295.00
- Ball Bearing Chuck.....\$150.00
- Drill Press Vise (4-1/2" Capacity).....\$250.00
- Milling Table (11" Crossfeed, 6-1/2" in/out feed).....\$400.00





## Sheet Metal Cutters

Slugger sheet metal cutters easily outperform standard hole saws by cutting a more accurate hole up to three times faster with far superior tool life. These precision ground cutters can be used in a hand drill or drill press and will leave a smooth finish with minimal material deformation. Their 1/4" depth of cut keeps vibration and distortion to a minimum. Sizes are available individually from 3/8" to 3" OD.

- SMS000 Sheet Metal Cutter Set (Includes sizes 5/16", 3/8", 7/16", 1/2", 9/16", 5/8", 3/4" w/ arbor, pilot pin, and carrying case). \$89.95
- SM000VS Sheet Metal Cutter Set (Includes sizes 1", 1-1/4", 1-1/2", 1-3/4", 2", w/ two arbors, and carrying case). \$185.00
- SM000 Sheet Metal Cutter Set (Includes sizes 7/8", 1-1/8", 1-3/8", 1-3/4", 2", 2-1/2" w/ two arbors, and carrying case). \$195.00



## ShortSlugger Annular Cutters

Short Slugger Annular Cutters utilize the same technology as standard cutters, but have a 1/2 inch shank and maximum 3/4 inch depth of cut. An optional arbor and lower horsepower requirements make these ideal for use in small mills and drill presses. A center punch mark is all that is required to locate and start the spring-loaded pilot pin for a fast and clean hole.

- SJS001 Small Annular Cutter Set (0.75" depth, 9/16", 11/16", 13/16", 15/16", 1-1/16"). \$120.00
- SJS000 Large Annular Cutter Set (0.75" depth, 1/2", 9/16", 5/8", 11/16", 3/4", 13/16", 7/8", 15/16", 1", 1-1/16"). \$175.00
- ShortSlugger Arbor Assembly. \$35.00



## Drilling Jigs and Guides

These drilling jigs and guides are designed to allow the user to drill precise holes in tubing, pipe, and round stock using a portable electric hand drill and/or drill press.

- CI-1 Center-It Jig (For drill press use, holds round tube and pipe). \$16.99
- Drill-Rite Guide (portable drill use only, fits pipe dimensions: 1/2" - 2-1/2"). \$59.95
- Tube Drilling Combo (includes Center-It Jig and Drill Ride Guide). \$69.99



## Flowdrill

Flowdrill exists to provide an inexpensive, high quality replacement for traditional fastening methods such as nut-serts or weld-on nuts and bungs when working with thin wall material. Flowdrill is a solid tungsten carbide tool, which uses friction to form material into a cylindrical or cone shape. This formed hole can then be tapped or used for a reinforced bearing or bushing surface. Practical uses would be O2 or EGT sensor installations, brackets and tabs, sheet metal fastening, etc. Flowdrill can be used in drill presses, CNC machines or even high speed hand drills for small holes.



- Flowdrill Starter Kit #1 (1/4", 5/16"). \$750.00
- Flowdrill Starter Kit #2 (10-32, 1/4", 5/16", 3/8"). \$1,025.00
- Flowdrill Starter Kit for O2 Sensors (Hole Sizes: M18 x 1.5"). \$850.00

## Power Drive Bead Rollers

Mittler Bros



Finance as low as \$35.00 / Month

- Designed to handle .040" mild steel (20 ga.), .050" aluminum
- Industrial motor available for 16 ga. applications
- Largest selection of heat treated rolls to choose from
- Adjustable depth of bead
- Variable speed foot control for hands free operation
- Oillite bushings at all rotation points for long life
- Heat treated gears for years of trouble free operation
- 1-1/8" throat opening
- Forward and reverse switch for left or right side operation

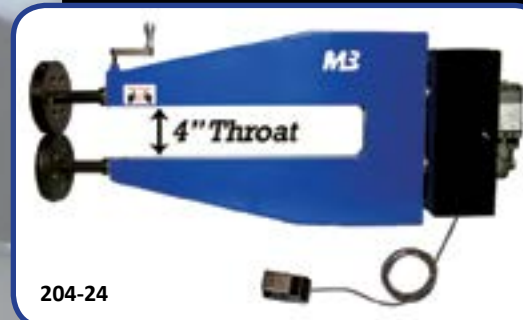


- 24" Throat Manual Roll. \$595.00
- 24" Throat Power Roll (add \$580 for industrial motor). \$795.00
- 24" Throat Deluxe Kit **SALE!** \$1,290.10
- 36" Throat Power Roll (add \$530 for industrial motor). \$995.00
- 36" Throat Deluxe Kit **SALE!** \$1,484.10
- 42" Throat Power Roll. \$1,195.00



24" Deluxe kit shown with industrial motor. Includes 5/16" round bead, 1/16" step, and spoiler rolls, rolling stand, roll holder, and depth stop

## High Throat Bead Roller



This new version of the popular Mittler bead roller allows the beading of high crown panels or pan shaped pieces, in addition to flat sheet metal. This unit comes standard with a variable speed electric motor and foot pedal controls. An upgraded motor option is available for beading 18 and 16 ga. mild steel.

- Variable speed foot control
- Forward/Reverse switch
- 4" tall throat
- Includes 1 standard roll set
- .040" mild steel or .050" aluminum capacity
- Upgraded motor available for 16 ga applications

- 24" Throat Model (add \$550 for industrial motor) \$925.00
- 36" Throat Model (add \$525 for industrial motor) \$1,150.00
- Standard Roll Sets Starting at: \$100.00
- High Crown Roll Sets \$250.00

See a full selection of rolls on our website



# Bead Form Tools



# Bead Form Tools

## Jamey Jordan Series

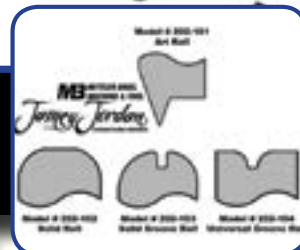
The Jamey Jordan Signature Series Bead Roller by Mittler Brothers is perfect for custom built sheet metal panels in street rods, aircraft restorations, and race cars. These machines are specially equipped with an adjustable upper shaft for greater flexibility with bead profiles. The machines feature a variable speed foot pedal control with a reversible 110 volt motor. Capacity is rated for 16 gauge steel and .060 inch aluminum. Deluxe Kits include a Jamey Jordan Bead Roller with industrial motor, art roll kit, soft step set, rolling pedestal, bead roller table, and a copy of "Art of Bead Rolling" DVD, Volume 1.

- 24" Aluminum Power Bead Roller (add \$950 for industrial motor).....\$875.00
- 24" Aluminum Power Bead Roller Deluxe Kit **SALE!**.....\$2,125.00
- 36" Power Bead Roller (add \$950 for industrial motor).....\$1,195.00
- 36" Power Bead Roller Deluxe Kit **SALE!**.....\$2,295.00
- Work Table for Mittler Bros. Bead Roller.....\$225.00
- Art Roll Kit (includes: Art Roll, Solid Roll, Solid Groove Roll, and Universal Groove Roll)....\$225.00

Finance as low as \$58.00 / Month



202-24NV-K



Finance as low as \$52.00 / Month

## Bead Form Electric

New electric model features a high quality 1/6 hp gear motor and is mounted on a rubber isolated aluminum plate. A foot pedal control makes production work much quicker and easier. The electric option is available as a complete unit or as an upgrade to an existing bead form tool.

Model No.	Minimum ID	Steel Cap.	Aluminum Cap.	Stainless Cap.
BF1HDE	9/16"	.050" Wall	.050" Wall	.050" Wall
BF2HDE	5/8"	.065" Wall	.065" Wall	.050" Wall
BF3E	5/8"	.065" Wall	.065" Wall	.065" Wall



Scan for Video

- Bead Form Electric Upgrade (utilize your existing bead form tool).....\$1,270.00
- Electric Bead Form I HD (5/8"-2" OD).....\$1,889.00
- Electric Bead Form II HD (1-1/2"-4" OD).....\$1,889.00
- Electric Bead Form III (1-1/2"-4" OD, for .065" material).....\$1,889.00

## HD Bead Roller



Finance as low as \$165.00 / Month

The Baileigh BR16E-36 Bead Roller features a 36 inch deep x 12 inch high throat - the largest available on the market! Additionally, the bead roller is equipped with a variable speed frequency drive with a foot pedal control, giving the operator unlimited speed adjustment. Another unique feature of this bead roller is the quick release upper die, which allows the upper roll to be disengaged from the material, while maintaining its depth when re-engaged. This allows the operator to begin or end a design in the middle of the panel without having to worry if the depth is set correct.

- Steel Capacity: 16 gauge
- Aluminum Capacity: .065
- Stainless Capacity: 20 gauge
- Throat Depth: 36"
- Throat Height: 12"
- Motor: 1/2 hp 110v

- BR-16E-36 Power Bead Roller.....\$5,995.00
- Roll Sets.....Starting at \$125.00 ea.

## Tubing Bead Rollers

Bead Form quickly forms hose beads on all types of tubing. Positive action gear drive and 8620 steel form rollers make this tool very durable. It works on steel, aluminum, copper, or brass up to .050" wall thickness. The hand crank can be removed and replaced with a ratchet and 1/4" square socket. Can be vice or bench mounted with the included bracket and even comes with a handy carrying case. Great for fuel and radiator lines.

- Bead Form Jr (5/16"-1/2" OD) is designed for .028" wall tubing (produces a bead approximately .025" tall).....\$489.00
- Bead Form 1/2 (1/2" OD) (popular w/ refrigeration and vacuum fabricators).....\$489.00
- Bead Form I (5/8"-2" OD) (produces a bead approx. .050" tall x .185" wide).....\$419.00
- Bead Form I HD (same as above w/ replaceable bushings and heat treated shaft).....\$469.00
- Bead Form II (1-1/2"-4" OD) (produces a bead approx. .080" tall x .270" wide).....\$419.00
- Bead Form II HD (same as above w/ replaceable bushings and heat treated shaft).....\$469.00
- Bead Form III (1-1/2"-4" OD, for .065" material) (produces a bead approx. .080" tall x .270" wide).....\$529.00

## Bead Form



## Expander/Reducer/Swager

Swage, reduce, end form, flare, or expand tubing anywhere you want. Mounted on its own easy-wheeling cart, Huth's portable pipe expander/reducer/swager equips you to reduce, flare, or expand tube or pipe ends.

- Tubing expanding capacity is from 1" up to 5-1/2" ID
- Tube swaging, reducing, and flaring capacity is up to 3" OD
- Includes collet holder for 1" up to 2-1/2" OD tubing, and adjustable collar for expanding 1" to 3-1/2" tube
- Powerful 5 hp motor, 240v 1 ph (30 amp), or 3 ph (20 amp)
- Portable design includes heavy duty wheels and front swivel caster with brake
- Great for end forming mild steel, aluminum, stainless steel, black pipe, and tubing.
- This tubing expander / steel pipe reducer has 25,000 lbs. of expanding power
- Automatic preset expanding system allows precise expanding every time
- Open cart area provides a convenient work surface
- Made in the U.S.A.



Scan for Video

Finance as low as \$125.00 / Month

- 1673 Expander/Reducer/Swager.....\$4,544.50

## Rotary Machine

This Pexto 622 forming machine offers a broad variety of shapes and capabilities in forming sheet metal for a combination of uses: beading, crimping, double seaming, turning, burring, wiring, elbow edging, flanging, and flattening. The 622 Series is equipped with the addition of a 7" deep throat for additional forming capabilities. (24 gauge mild steel capacity). The 622 includes 5 sets of rolls and gauges, or may be ordered without rolls as the 622LR.

- 622 Pexto Rotary Machine (includes Pexto 622, bench mounting base, and rolls).....\$995.00
- 622LR Pexto Rotary Machine (less rolls).....\$875.00
- Bead Form Boss Roll Set (for tube beading with Pexto 622 or Tennsmith R22 machines).....\$179.00



622





TN1000



## Hole Saw Tube Notchers

The JMR Tubing and Pipe Notcher is the highest quality hole saw notcher on the market. It is manufactured from bar stock, not plate, to increase strength and has a 1.125" induction hardened shaft. The custom designed shaft seals prevent bearing and shaft damage and the shaft accepts replaceable hole saw mounting threads. The TN1000 tube notcher also features a 210° range of notch, allowing the fabricator to make a wide variety of notches. Angle changes can be made easy due to a Timken™ thrust bearing at the pivot point to increase clamping force while reducing wrench pressure. Use it for prototyping or production work.

TN1000 High Capacity Hole Saw Tubing Notcher .....\$595.00  
 TN1000 Vise Mounting Block (use for mounting in a vise or making your own stand, comes w/ mounting bolts).....\$19.99

JMR

The RaceLine Tubing and Pipe Notcher by JMR is designed for the fabricator on a budget, who is looking for a precision made, quality, and fully functional hole saw notcher. The notcher is constructed from CNC machined billet aluminum, with heavy duty 1 inch thick arms, and sealed needle bearings to support the 1 inch OD shaft. The notcher features 3 inch OD capacity, and can notch anywhere in a 210 degree arc around the end of the tube. Offset notches up to 1 inch can also be performed with ease.



TN300 RaceLine Hole Saw Tube Notcher.....\$329.00

TN-250



Baileigh

The TN-250 is one of the most versatile hole saw notchers on the market today. The unique radial vise clamping system allows for clamping tubing from 1" to 2.5" OD in any location, including the center of a bend. Hole saws are supported on a massive 1-1/4" OD shaft, which also includes a replaceable hex insert for attaching to a standard 1/2" drive drill. Offset copes of up to 1" can be accomplished by raising or lowering the cutter assembly.

- Capacity of 1" to 2.5" OD
- 230° of angle adjustment
- All CNC machined
- Radial vise clamping system allows for clamping in the center of a bend
- Can offset notch up to 1" vertically
- 1-1/4" Ground & Polished Stainless Steel shaft
- Sealed needle bearing shaft support
- Easy mounting: Bolt or clamp it to a table or simply clamp it in a vise
- Requires an ordinary 1/2" hand drill.

TN-250 Tubing Notcher.....\$595.00

Pro-Tools

Built around a heavy duty 1/2 inch thick aluminum base plate with a 1 inch diameter shaft supported on sealed ball bearings, this is one heavy-duty notcher! This Pro-Tools notcher will handle 3/4 through 2 inch diameter tubing at angles up to 60 degrees, and uses regular bi-metal hole saws. The HS-501i can be used in a drill press or attached to a table and used with a standard 1/2 inch drive hand drill. This tube and pipe notcher also has an adjustable vise for offset notches - a feature not found on other drill press mounted notchers!

HSN-501i Hole Saw Tube Notcher.....\$299.00



## End Mill Tubing Notchers

V-Block Vise Design Means Minimum Set-up Time

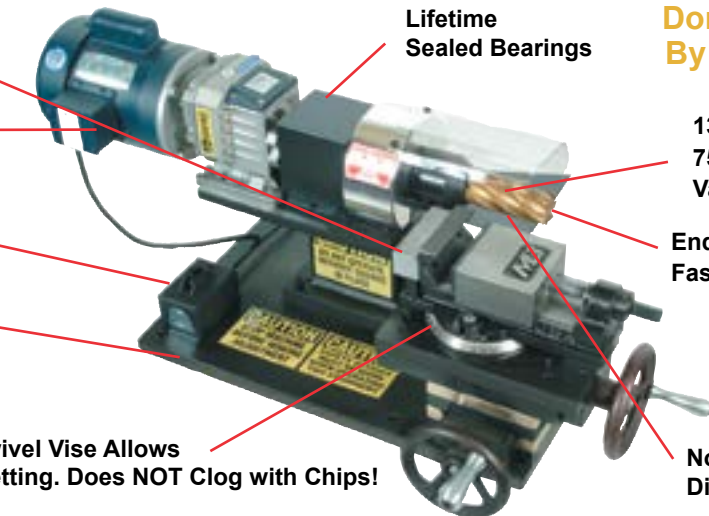
1 HP Standard (1.5 HP Variable Speed Optional)

115v Operation (220v Optional)

Rugged Construction 350 lbs.



Scan for Video



Lifetime Sealed Bearings

Don't Be Fooled By Look Alikes!

130 RPM Standard 75-250 RPM Variable Speed

End Mill Design Allows Fast Metal Removal

Notches up to 2-1/2" Diameter Tubing

Finance as low as \$124.00 / Month

Calibrated Swivel Vise Allows ANY Angle Setting. Does NOT Clog with Chips!

The MB Ultimate Tubing Notcher has been a favorite in fabrication shops for many years. Operation is simple; just clamp your tube in the calibrated swivel vise that allows for accurate and repeatable positioning at any angle. A compound feed table advances tubing into the milling cutter, producing a perfect notch and a perfect fit—every time.

- Standard Ultimate Tubing Notcher (max capacity 3/4" to 2" tubing, 110v) ..... \$4,495.00
- Variable Speed Ultimate Tubing Notcher (max capacity 3/4" to 2" tubing, 110v) ..... \$4,995.00
- Double Sided Variable Speed Ultimate Tubing Notcher (max capacity 3/4" to 2" tubing, 110v) ..... \$5,995.00
- Offset Vise Option (allows offset notching of tubes) ..... \$300.00
- Upgrade Vise Option (allows notching of tubes up to 2-3/8" OD) ..... \$300.00
- Ultimate Tubing Notcher Stand (cabinet provides space for safe storage of spare cutters) ..... \$375.00

## End Mill Cutters - 1-1/4" Shank

Tubing	Pipe Size	Tin Coated
2-3/8"	2"	\$585.00
2"		\$310.00
1.90"	1-1/2"	\$310.00
1-3/4"		\$290.00
1.66"	1-1/4"	\$280.00
1-5/8"		\$260.00
1-1/2"		\$205.00
1-3/8"		\$240.00
1-1/4"	1"	\$170.00
1-1/8"		\$155.00
1"		\$120.00
1"	High Helix	\$175.00
7/8"		\$105.00
7/8"	High Helix	\$160.00
3/4"		\$75.00
3/4"	High Helix	\$120.00

\* Adapter Bushings \$55.00 Each



Rolling Stand





# Tube Notchers

## Baileigh



The TN-800 tubing notcher has an operator adjusted eccentric path that requires only one cutter to notch weld joints on tubing, pipe, or solids with outside diameters of 1" to 3". This unique feature means the TN-800 tooling cost savings are ongoing. Notching under 1" is achieved by installing an optional 1/2" cutter and adapter bushing.



- Create perfect weld joints in chrome moly, mild steel, stainless steel, and aluminum pipe or tubing
- Does not contaminate the weld joint, offering more strength in the weld
- Unmatched versatility, mobility, and easy operation. Our pipe notcher is capable of notching up to 60° in either direction
- Cross slide table, angle vise, and V-Jaws can be independently calibrated allowing accurate positioning of straight, angled, or offset notches
- Quick changeover for different diameters of tube
- Ruggedly built stand with large wheels and casters allows for easy mobility

Finance as low as \$220.00 / Month

TN-800 Tubing Notcher (110v, 1 ph, 15 amp).....\$7,995.00

## Abrasive Notching Machines

The Grit GX75 Dual Speed Belt Grinder is the basis for the GX module system. It is a reliable, powerful belt grinder for professional applications. Featuring a 3" x 79" belt, 4" x 4" platen, and an 8 inch front contact wheel, this grinder offers plenty of grinding space for almost any application. Fein also offers two separate modules that make this grinder even more versatile.

The Grit GXC Centerless Grinding System by Fein can create the perfect surface finish on round tubing, with a very simple operation. The GXC features high process speeds along with an infinitely adjustable feed rate of the material. A variety of abrasives are available in order to achieve the right finish whether you are removing mill scale or creating a satin finish on stainless handrail.

The Grit GXR radius grinding module is the perfect solution for tube and pipe notching. By attaching the GXR module onto the GX75 belt grinder, you can convert to the ideal platform for precise radius profiles on pipe and round or square stock. This machine is for precise notching or coping of profiles in tube or pipe from 5/8 inch to 3 inch.



Finance as low as \$38.00 / Month



GX75



GXR



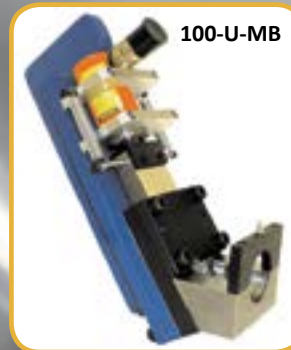
GXC

GX75 Belt Grinder (220v 3ph or 440v 3ph, add \$271.00 for 2 speed) **SALE!**.....\$1,391.00  
 GXR Pipe Notching Module **SALE!**.....\$1,544.00  
 GXC Centerless Grinding Module **SALE!**.....\$1,594.00  
 3" x 79" Belts (10 Pack) **SALE!**.....Starting at: \$81.63



# Tube Notchers

## Hydraulic Notchers



100-U-MB

The Mittler Brothers Hydraulic Tube Notchers are precision-machined units based on a punch and die design. These notchers utilize a ten-ton ram that is capable of notching up to 2-3/8 inch OD tubing and 2 inch Schedule 40 pipe. These notchers have a maximum notch angle of 90° and can even handle limited angles when necessary. They can be used in a bench vice, fixed stand or stand with wheels, and are handy enough to take to your work or store out of the way.



100-MB

100-MB (2 inch capacity, Choice of one die).....\$749.00  
 100-U-MB (2-3/8 inch capacity, Choice of one die).....\$1,150.00

## Notch Tooling

PIPE punch & die set features cutting edges made from A2 and D2 air hardened tool steels. Requires #1000 series standard housing.

- Built to fit in a press or ironworker
- Angle notch units available, call with application
- Larger sizes available as well as punching, slotting or shearing



1000 Series Tooling Set (housing).....\$265.00  
 1000 Series Die Sets.....Starting at: \$423.00 ea.

## PipeMasters



PipeMasters are the perfect companion to any of our notchers. These time-savers will easily pay for themselves when fitting tube or pipe together. Individual sizes will slip over the tube with a .020" clearance or can be used free hand. The steel pins contour to the shape desired which can be transferred to the work piece. Kits come in a foam lined carrying case. Call for sizes not listed.



Scan for Video

P/N	Nominal Pipe Size	Pipe OD	Price
P100	1"	1.315"	\$43.00
P125	1-1/4"	1.660"	\$49.00
P150	1-1/2"	1.900"	\$56.00
P200	2"	2.375"	\$57.00
P250	2-1/2"	2.875"	\$110.00
P300	3"	3.500"	\$115.00
P400	4"	4.500"	\$172.00
P500	5"	5.563"	\$190.00
P600	6"	6.625"	\$292.00

P/N	Tube Size	Price
PT075	3/4"	\$40.00
PT0875	7/8"	\$41.00
PT100	1"	\$42.00
PT1125	1-1/8"	\$43.00
PT125	1-1/4"	\$44.00
PT1375	1-3/8"	\$49.00
PT150	1-1/2"	\$49.00
P125	1-5/8"	\$49.00
PT175	1-3/4"	\$54.00
PT200	2"	\$56.00
PT250	2-1/2"	\$128.00

P-SC PipeMaster Stock Car Kit (1-1/2", 1-3/4").....\$103.00  
 P-TJ PipeMaster Truck & Jeep Kit (1-3/4", 2").....\$110.00  
 P-DR PipeMaster Dragster Kit (1-1/2", 1-5/8").....\$98.00  
 P-PRKit PipeMaster Pro Racer Kit (1", 1-1/4", 1-1/2", 1-3/4", 2").....\$245.00  
 PT-2Kit PipeMaster Master Builder Kit (11 sizes, 1/8" increments, 3/4"-2" OD).....\$553.00  
 P-1Kit Nominal Pipe Size Kit (1", 1-1/4", 1-1/2", 2" pipe).....\$205.00



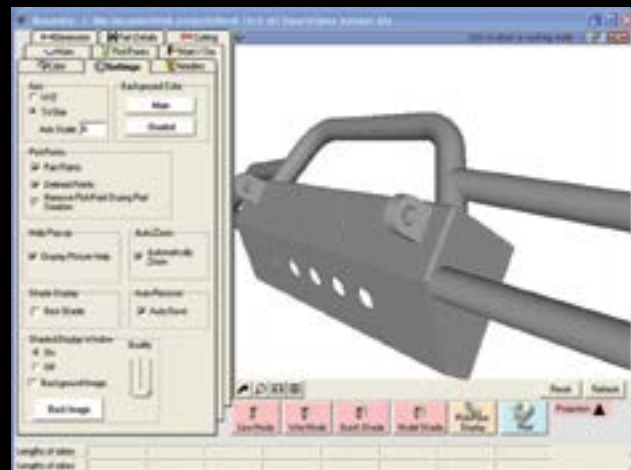
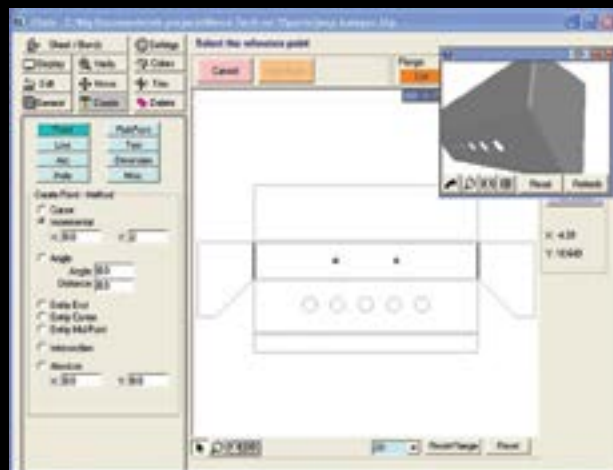


## Design and Layout Software

### Sheet Metal

Bend-Tech Sheet Metal is the latest development used for designing sheet metal parts and assemblies. This software approaches sheet metal design from an easy to understand 2D perspective, however final product models are presented in full 3D for review. Bend Tech Sheet Metal takes a practical approach to sheet metal design, and is by far the most easy-to-use sheet metal design product on the market. Customers who have never used a CAD system before are productive the first time they sit down to use it. Bend-Tech Sheet Metal is designed for the serious hobbyist or small shop. It allows the user to export .DXF files for CNC cutting systems or printing templates, and also has the following features and capabilities:

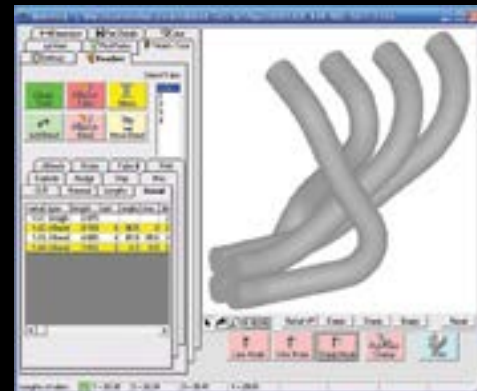
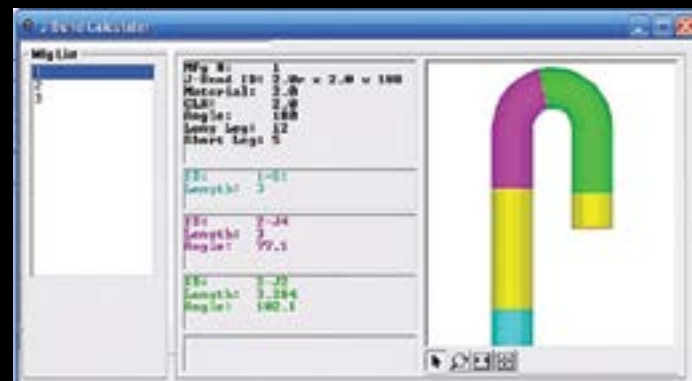
- 2D CAD
- Bends / Flanges
- Flat Layout
- Drawing Dimpled Holes
- Parts assembly
- Chamfer, Corner notch
- Bolt-Hole Pattern
- Exports .DXF files



Bend-Tech Sheet Metal Software .....\$295.00

## Header Design

Bend Tech HD is a software tool that removes the trial and error from tube header manufacturing. Bend-Tech HD allows any user to be able to design his own tube headers in minutes, providing detailed step-by-step instructions where to cut and rotate each tubular segment. Bend-Tech HD is the only product in the world to help you design custom tube headers and break it down to fabrication instructions to use pre-bent mandrel tubing. Bend-Tech HD was designed for the fabricator. It uses terms and technology that is easy to understand. Users do not need any CAD or sophisticated software experience. Designed to make the user feel comfortable with it in minutes, it will start saving you time and money immediately.



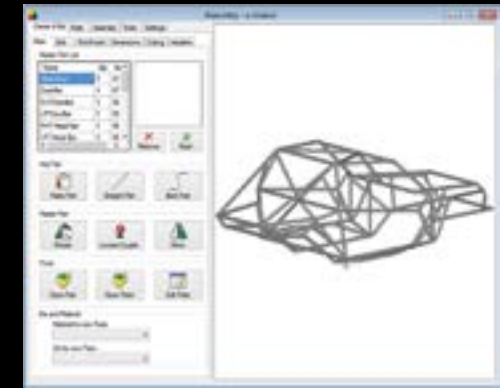
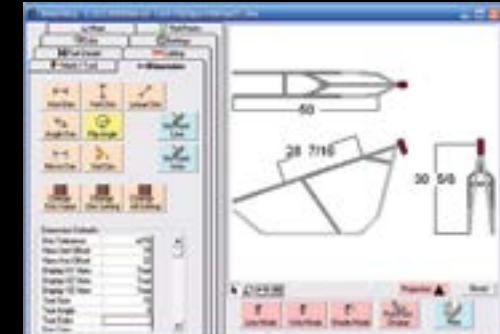
Bend-Tech Header Design Software .....\$295.00

## Rotary Draw Bending

Bend-Tech offers tube bending software solutions for everyone from the hobbyist to the professional fabricator. Using the finished part dimensions, this software calculates how long to cut your tube as well as where to start each bend regardless of your bender type. This can save hours of calculating and reduce wasted material. Each version contains several common templates for nearly any application.

With Bend-Tech SE, users have the option of sketch mode for drawing custom parts as well as X, Y, Z dimensional input. You can even view and rotate a three dimensional model of the finished part and watch a simulation of how it will bend on your specific bender. Whether you are a first time fabricator or a seasoned pro, Bend-Tech Software can easily pay for itself in the first use.

Features	EZ	EZ-3D	PRO	SE
Designer: Templates	✓	✓	✓	✓
Designer: Custom Part 2D			✓	✓
Material and Die Libraries			✓	✓
Basic Calculation Output			✓	✓
Post Bending Cutoff			✓	✓
Designer: Custom Part 3D		✓	✓	✓
Rotational Calculations			✓	✓
Bend Order Manipulation			✓	✓
Bending Simulation			✓	✓
Designer: Assembly Design			✓	✓
Dimensioning			✓	✓
Profile Cutting (fish-mouthing, coping & mitering)			✓	✓
Spring Back Calculator			✓	✓
Designer: XYZ				✓
Designer: Reverse Engineering				✓
STEP & IGES import/export				✓
Advanced Calculation Output				✓
Unit Conversion				✓
Manufacturability Checking				✓
Multiple Dies for Single Part				✓
Large Radius Bending (including crowning)				✓
Extended Tooling Library Definitions				✓
Railing Module				✓
Output DXF file of cutting profile				✓
Bend Limit (per part)	6	6	10	100

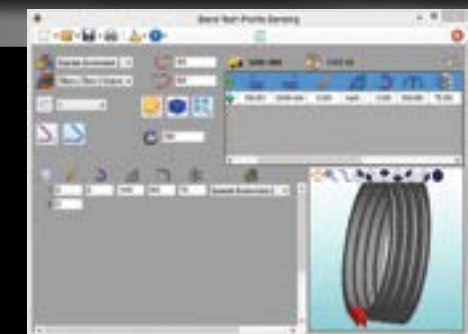


- Bend-Tech EZ .....\$69.00
- Bend-Tech EZ 3D .....\$149.00
- Bend-Tech Pro (add \$75.00 for Sheet Metal Module) .....\$295.00
- Bend-Tech PRO Deluxe Tube Bending Software with Sheet Metal and Header Design Modules SALE! .....\$375.00
- Bend-Tech Super SE (add \$75.00 for Sheet Metal Module) .....\$599.00
- Bend-Tech Super SE Deluxe Tube Bending Software with Sheet Metal and Header Design Modules SALE! .....\$749.00

Note: Sheet metal and header modules operate inside bending software

## Roll Bending

Bend-Tech Profile Bending (PB) software has been designed to work with bending machines often referred to as section, large radius, profile or roll bending machines. The software will help with the bending of any material profile, even allowing custom profiles to be created by the user. Bend-Tech PB software is capable of showing your material cut length, the start and end of bend zones, and gives you an animated graphical representation of a part as it is being created. A history log that accumulates real life data allows for increased accuracy for duplicating bends.



Bend-Tech PB (for Roll Bending) .....\$599.00



# Tube Benders



# Tube Benders

## Manual Tube Benders

JMR

JMR Tube Benders are built with heavy duty material and are sold at an economical price, making them perfect for DIY fabricators or small shop environments. All of these machines feature a military grade tough-coat finish, heat treated 4140 steel pins, and multiple bending speeds. These machines provide enough leverage to bend up to 2 inch round tube by hand, but can also be upgraded to hydraulics for even faster bending. Dies are sold separately and available for round and square tubing well as nominal pipe sizes (NPS).



TBM-250R

- TBM-250R RaceLine Tubing Bender (uncoated, includes steel degree ring and pointer).....\$295.00
- TBM-250 Basic Tubing Bender (includes steel degree ring and pointer).....\$395.00
- TBM-250U Ultra Tubing Bender (includes handle, billet aluminum degree ring and pointer).....\$595.00
- Air/ Hydraulic Conversion Kit for JMR Benders.....\$795.00



MB-105HD

## Pro-Tools

The Pro-Tools Model 105HD Manual Tube Bender is an upgraded version of the popular MB-105 bender, featuring 5/8 inch thick main frame arms. It is a great choice for building rock-crawlers, buggies, motorcycle frames and many other projects. With it's 2 inch capacity and economical pricing, it can pay for itself in the first use. The Model 105 Heavy Duty uses mechanical leverage to easily bend by hand, but can be upgraded to hydraulics at any time. Dies are sold separately and available for round and square tubing well as nominal pipe sizes (NPS).

- MB-105HD Manual Tubing Bender (includes steel degree ring and pointer) **SALE!**.....\$299.00
- MB-105HD Manual Tubing Bender Deluxe Kit (includes floor pedestal, degree ring and handle) **SALE!**.....\$449.00

## Hydraulic Benders

JMR

Finance as low as \$35.00 / Month

The JMR TBAH-250 air/hydraulic tube bender is a precision machined unit that offers large capacity, a fast hydraulic system, and unique portability. With features such as nylon/graphite bushings at the pivot points, military grade tough-coat finish, and lifetime warranty billet steel die sets the JMR bender is built to last! The JMR air/hydraulic pump is easily operated with a foot pedal control and 80-100 psi of air pressure. All JMR hydraulic benders feature a powered cylinder return for faster cycle times and more repeatable zero point. Dies are available for round and square tubing well as nominal pipe sizes (NPS).



Deluxe Model Shown

- TBAH-250 Air/Hydraulic Tubing Bender (includes hydraulic cylinder and pump).....\$995.00
- TBAH-250 Air/Hydraulic Deluxe Kit (includes pedestal, degree ring, hydraulics) .....\$1,269.00

## Pro-Tools



Finance as low as \$40.00 / Month



Scan for Video

The Pro-Tools HB302 is a hydraulic bender designed to bend to 90 degrees in one stroke of the cylinder. The sliding aluminum follow bar will not scratch or marr pre-finished tubing like stainless and aluminum, which makes this a great machine for handrail work. The HB302 One Shot Bender can be powered with either an air/hydraulic or electric/hydraulic pump (not included). Because it is self contained, it does not need to be bolted down, and can be mounted to a rolling pedestal for ease of use on the job site or in the shop.

- Bender with 15 ton hydraulic ram
- 302 support bar
- HB-302 support bar
- Dies sold separately

- HB-302 One Shot Hydraulic Bender (includes cylinder, no pump).....\$1,463.00
- HB-302 One Shot Air/Hydraulic Deluxe Kit (includes rolling pedestal, hydraulics).....\$2,127.00



TBH-250

Finance as low as \$82.00 / Month

JMR

Finance as low as \$55.00 / Month

The TBH-250U and TB-1000 feature electric/hydraulic power which will operate at approximately 3 times the speed of air/hydraulic power machines. All JMR hydraulic benders feature a powered cylinder return for faster cycle times and more consistent zero point. Optional, is a longer cylinder which can perform a 90 degree bend in one stroke!

- Mild Steel Capacity: 2-1/2" x .120"
- Dies sold separately
- 2" schedule 40 nominal pipe capacity
- 110v
- Rolling stand

- TBH-250 Electric/Hydraulic Bender (add \$200 for 90° cylinder).....\$2,995.00
- TB-1000 Electric/Hydraulic Bender (add \$200 for 90° cylinder).....\$1,995.00



TB-1000

## Metal Fab Station

JMR

Finance as low as \$96.00 / Month

The JMR Fab Station features a 36 x 48 inch slotted steel top surface that accepts threaded T-nuts, just like a drill press or mill would use, for maximum flexibility in workpiece holding. A unique feature about this one of a kind table is the receiver hitch style framework beneath the table's surface. The hitch framework is intended to mount accessories such as a tubing bender, notcher, bench grinder, vise, or whatever you can dream up. The tray underneath allows you to store necessary supplies including the 1/2" T-slot hold down kit and 90 degree slotted angle plate that is included with the purchase of the table.



- Slotted Fabrication Table.....\$1,295.00
- Fabrication Station (Includes: table, tube bender, and tube notcher).....\$3,495.00



## Bender Dies

These JMR RaceLine Series dies fit all JMR tubing benders and come in several profiles to bend round tubing in mild steel, stainless steel, DOM, 4130 chrome moly and more. These feature an alloy one piece counter-bend die to reduce galling on the tube. If you are unsure of which die you need, please feel free to contact us and we will guide you through the process.

Part No.	Material Size	Center Line Radius	Minimum Wall Thickness	Maximum Degree of Bend	Price
1203100R	1"	3"	.065"	110°	\$115.00
2403100R	1"	3"	.065"	180°	\$155.00
1204125R	1-1/4" (1.250)	4"	.065"	110°	\$195.00
2404125R	1-1/4" (1.250)	4"	.065"	180°	\$245.00
1205150R	1-1/2" (1.500)	5"	.083"	110°	\$225.00
2405150R	1-1/2" (1.500)	5"	.083"	180°	\$285.00
1206150R	1-1/2" (1.500)	6"	.065"	110°	\$235.00
2406150R	1-1/2" (1.500)	6"	.065"	180°	\$305.00
12061625R	1-5/8" (1.625)	6"	.083"	110°	\$255.00
24061625R	1-5/8" (1.625)	6"	.083"	180°	\$315.00
1206175R	1-3/4" (1.750)	6"	.083"	110°	\$250.00
2406175R	1-3/4" (1.750)	6"	.083"	180°	\$325.00
1207200R	2"	7"	.095"	110°	\$295.00
2407200R	2"	7"	.095"	180°	\$395.00





## Baileigh

Finance as low as \$129.00 / Month

The RDB 125 tubing and pipe bender is the newest machine in the Baileigh/RMD lineup. This bender features big capacity for the money, it is able to bend 2.5" round tube or 2" schedule 40 pipe. Using a single hydraulic cylinder, the machine is capable of 180 degrees of bend without any repositioning of the tooling. The cylinder can be reset and re-stroked by using the foot pedal control. It also features a quick release counter-bend die for easy positioning/removal of the tubing. Using industrial grade hydraulics and heavy steel construction, this machine is built to withstand tough industrial jobs.



- 180° capable (multiple strokes of cylinder)
- 2" square .125" wall mild steel capacity
- 2-1/2" round .125" wall mild steel capacity
- 7" CLR maximum
- 2" schedule 40 pipe capacity
- 110v
- 2" round .120" wall chrome moly capacity



RDB-125 Bender (110v) ..... \$4,695.00

Finance as low as \$201.00 / Month

## Baileigh

The RDB 175 tube and pipe bender has a one bend-angle control that can bend up to 2-1/2" tubing and 2" schedule 40 pipe. The large 9" Center Line Radius (CLR) maximum accommodates a wide variety of bending applications. This rotary draw tube bender can bend 180° in 30 seconds and returns in only 12 seconds! Complex serpentine bends can be done with ease. A quick counter die release allows for easy removal of bends, and is adjustable in 1/4" increments for easy tool changeovers.



- 180° capable in one bend
- Quick adjust counter bend die
- Industrial hydraulic cylinders
- 2-1/2" round .125" wall mild steel capacity
- 2" schedule 40 pipe capacity
- 2" round .120" wall chrome moly capacity
- 2" square .125" wall mild steel capacity
- 9" CLR maximum
- No tooling required to change forming and pressure dies
- Heavy duty casters for portability
- 110v

RDB-175 Bender (110v) ..... \$7,295.00

## Die Packages

These Baileigh die packages will help you save money and get you underway on your next bending project. Die kits are available for bending round, square, and pipe. These kits are put together for specific projects ranging from handrails to chassis fabrication. Die kits will fit all Baileigh tube benders except the RDB-050.

- RT-1B Tubing Kit (OD) (includes 3/4" x 2.5R, 7/8" x 3R, 1" x 3R, 1-1/4" x 4R, and 1-1/2" x 5R) ..... \$2,425.00
- Racer's Tubing Kit (OD) (includes 1" x 3R, 1-1/4" x 4R, 1-1/2" x 5R, 1-5/8" x 6R, and 1-3/4" x 7R) ..... \$3,375.00
- RP-1B Pipe Kit (Nominal Pipe size) (includes 1/2" x 2.5R, 3/4" x 3R, 1" x 3R, 1-1/4" x 4R, 1-1/2" x 5R) ..... \$2,478.00
- Handrail Kit (Nominal Pipe size) (includes 1-1/4" x 3R, 1-1/2" x 3.75R) ..... \$968.00
- ST-1B Square Kit (OD) (includes 1/2" x 3R, 3/4" x 3.5R, 1" x 4.5R, 1-1/4" x 5.5R, and 1-1/2" x 6.5R) ..... \$4,305.00

## Programmable Tubing Bender

The RDB-250 tubing bender is a programmable control machine that can bend up to 2-1/2" tubing and 2" schedule 40 pipe. The touch screen control allows up to 170 programs with 10 bends per program. Optional indexing tables give repeatability for both rotation points and length measurements between bends. Tables up to 20' long are available.

This rotary draw tube bender can bend at speeds up to 9 seconds for a 180° bend and can be programmed to bend up to 360°, great for solid rod applications. Complex serpentine bends can be done with ease. A quick counter die release allows for easy removal of bends.

The counter die positioner has a numerical counter so repositioning of the counter die is a breeze when recalling bend programs. Engaging bends is as simple as pressing the forward foot pedal, and reverse pedal when complete.



Finance as low as \$289.00 / Month



RDB-250 Bender (220v 1 ph) ..... \$10,495.00

- 180 degrees in one shot
- 2-1/2" OD .125" wall mild steel capacity
- 2" schedule 40 pipe capacity
- 2" square .125" wall mild steel capacity
- 170 program touch screen control standard
- 9" CLR maximum
- Optional positioning table
- No tools required for die changes
- Bends pipe, round & square tubing
- On casters for portability
- 220v 1 ph

Shown with optional IDX table



## Manual Roll Bender



This manual roll bender by Pro-Tools is capable of rolling tube, pipe, channel, flats, and various box tubing. The unit's small size makes it highly portable and versatile. Top roll position is adjusted by means of a lever handle and the lower rolls are fixed. Bottom rolls can be dropped in quickly, and the top roll is fixed in place using the keyed shaft on the handle.

With its sturdy dual side plate design, this machine can handle surprisingly large material for large radius work. (Not for rolling circles.) Excellent machine for the ornamental, racing, and handrail industry with die sets available for up to 2" OD.

- Mild Steel Capacity: 2" x .095"
- Square Mild Steel Capacity: 2" x .083
- Round Aluminum Capacity: 2" x .120"
- Maximum OD: 2"
- Nominal PIPE Capacity: 1-1/2" Schedule 40

M3RB Manual Roll Bender ..... \$970.00  
Roll Sets ..... \$329.00 ea.





## Roll Bending Machines

These machines are used for bending tube, angle, or shapes into coils, circles or large arcs using a wide variety of materials. Simply adjusting the third roll changes the size of the arc or circle. A digital read out allows repeatability for production runs. Machines come complete with a universal roll set. Tube sizes require specific rolls for each OD. We have rolls for any application including CNC controlled. Please call for special applications.

- Lower rolls knurled for optimal traction
- Manual or hydraulic adjustment of top roll
- Rugged frame and heavy duty wide base
- Hardened steel shafts
- Horizontal or vertical operation options
- Drive components supported in roller bearings
- Heavy duty adjustable lateral material guides
- Compact, low maintenance design
- Hardened universal standard rolls
- Motor overload protection



Model	Display	Motor	Speed	Weight
CP20	LED	.44 hp	10	240 lbs.
CP30E	Scale	1.25 hp	9	450 lbs.
CP30	LED	1.25 hp	10.5	550 lbs.
Z402	LED	2.25 hp	14	870 lbs.
CP40	LED	2.5 hp	14	1,400 lbs.

Model	Tube	Square	Solid	Angle
CP20	1-1/4" x .065"	3/4" x .065"	1/2"	3/4" x 1/8"
CP30E	2-3/8" x .065"	1-1/2" x .120"	1-1/4"	1-1/2" x 3/16"
CP30	2-3/8" x .065"	1-1/2" x .120"	1-1/4"	1-1/2" x 3/16"
Z402	2-3/4" x .065"	2" x .120"	1-1/4"	1-1/2" x 1/4"
CP40	2-3/4" x .083"	2" x .125"	1-3/8"	2" x 1/4"



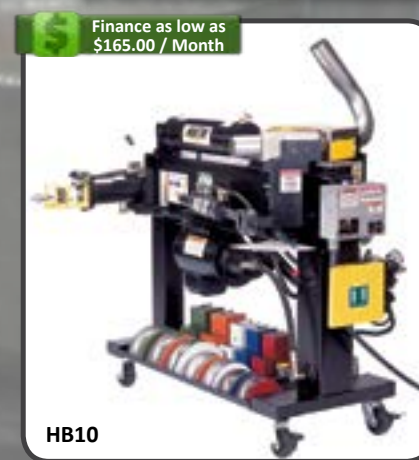
- CP20 (bench top model, manual adjustment w/ LED, 220v 3 ph) . . . . . \$4,395.00
- CPS20 (hydraulic positioning w/ LED, auto 9 position repeat, 220v 3 ph) . . . . . \$9,900.00
- CP30E-PR (includes stand w/ horizontal/vertical operation, manual adjustment w/ scale, foot pedals, 220v 3 ph) (also in 220v 1ph) . . . . . \$6,725.00
- CP30PR-2V (includes stand w/ horizontal/vertical operation, manual adjustment w/ LED, two speed, foot pedals, 220v 3 ph) (also in 220v 1ph) . . . . . \$7,765.00
- ZM-402 (manual adjustment w/ LED, foot pedal control, 220v 3 ph) . . . . . \$10,650.00
- ZH-402 (hydraulic adjustment w/ LED, foot pedal control, 220v 3 ph) . . . . . \$11,450.00
- CP40-M (manual adjustment w/ LED, foot pedal control, 220v 3 ph) . . . . . \$13,400.00
- CP40-H2 (hydraulic adjustment w/ LED, foot pedal control, 220v 3 ph) . . . . . \$15,250.00
- CP40-H (hydraulic adjustment w/ LED, 3 driven rolls, foot pedal control, 220v 3 ph) . . . . . \$17,950.00

## Hand Bending Machine

Introducing the HB1 Hand Bending Machine for up to 5/8" OD tubing. The HB1 features heavy duty steel construction for bending custom fuel, brake or hydraulic lines or even small diameter chassis tubing. Quick setup and simple operation make this bender the right choice for light production, repair, and prototype work. Each standard die set is reversible for bending three-times or five-times the diameter of the tube radii and the adjustable bend die allows for easy repositioning and removal of the tube. The HB1 hand bender produces quality bends in a variety of materials and wall thicknesses with the flexibility required for any project.

- Rugged CNC machined steel construction
- Replaceable parts for long service life
- 3D and 5D bends from each die set
- Adjustable bend die on lead screw
- Close bend-to-bend distances
- Simple set up and operation
- Pedestal or vice mount

- HB1KIT (Hand Bender Kit, includes bender and 5 die sets) . . . . . \$699.98
- Deluxe HB1kit (Includes HB1 bender kit, 5 die sets, and pedestal w/die rack) . . \$799.98
- HB1 (Hand Bender Only) . . . . . \$419.98
- VS250 (1/4" OD x .75" & 1.25" CLR die set) . . . . . \$45.00
- VS312 (5/16" OD x .93" & 1.56" CLR die set) . . . . . \$50.00
- VS375 (3/8" OD x 1.12" & 1.87" CLR die set) . . . . . \$60.00
- VS500 (1/2" OD x 1.5" & 2.50" CLR die set) . . . . . \$75.00
- VS625 (5/8" OD x 1.87" & 3.12" CLR die set) . . . . . \$90.00



## Exhaust Benders

Huth benders provide a fast and versatile option for ram bending tubing, pipe and square. Popular with exhaust shops, as well as industrial applications these machines are built with portability and flexibility in mind.

The HB-10 is Huth's entry level bender, designed to introduce you to Huth quality while showing you incredible profit potential with it's standard features. Not only is this machine capable of bending up to 3 inch OD material, but it can also expand and reduce tubing, and form exhaust ball joints and slip joints. Included in the HB-10 package is the model 1600 bender, and tooling for bending and creating joints for exhaust tubing from 1-1/2 to 3 inch OD.

The Huth 2600 industrial duty bender is the most powerful bender of its kind. Designed for large diameter or heavy wall applications that cannot be done on conventional machines. It offers a knee pedal control, 7.5 hp unit - enough to provide 85,000 lbs of bending force, and a compact control panel. This machine will also accept standard tooling and many available accessories.



- 220v, 1ph or 3ph power options
- Available tooling packages
- Industrial quality
- Expander/Swager included



- HB10 Bender with tooling package SALE! . . . . . \$7,591.65
- 2600HD Industrial bender, less tooling . . . . . \$9,575.00



## Compact Mandrel Benders

The K Series mandrel benders are designed for the custom exhaust market and built with space in mind. These portable machines offer hydraulic muscle with digital accuracy offering a tolerance of +/- .1 degree. With capacity up to 4 inch stainless and bend radii as tight as 1.5 x diameter in their standard configuration, these machines are as versatile as they are economical. Optional accessories include mandrel lubrication, length and rotational stops with the Plane of Bend device, and 500 part storage with the SPS touch screen control. Please call our expert sales staff with all of your bending needs.



Finance as low as \$1,595.00 / Month

2076K

- Mild steel tubing from 1/4" to 3", maximum wall thickness 0.109"
- Stainless steel tubing from 1/4" to 3", maximum wall thickness 0.065"
- Bending angle up to 180.0 plus 10.0 springback
- Bending head speed 0.0-90.0: 8 seconds
- Standard load length: 10' (extensions available)
- Minimum centerline radius: 1.5D
- Maximum centerline radius: 6" (extensions available)
- Manual or semi automatic operation (with optional SPS control)
- Removable shaft for small bend radius
- Machine weight: approx. 2,200 lbs.
- Made in Germany
- Prices start at \$57,800.00

- Mild steel tubing from 1/4" to 4", maximum wall thickness 0.134"
- Stainless steel tubing from 1/4" to 4", maximum wall thickness 0.078"
- Bending angle up to 180.0 plus 10.0 springback
- Bending head speed: 0.0-90.0: 9 seconds
- Standard load length: 10'
- Minimum centerline radius: 1.5D (optional boosted pressure die for <1.5D)
- Maximum centerline radius: 7"
- Manual or semi automatic operation (with optional SPS control)
- Removable shaft for small bend radius
- Machine weight: approx. 5,500 lbs.
- Made in Germany
- Prices start at \$107,433.00



Finance as low as \$2,966.00 / Month

20101K

## Optional Accessories



Mandrel Tooling



Plane of Bend Device



SPS Control



Mandrel Lubrication



## CNC Plasma Table

The Torchmate 2 x 2, 2 x 4, and 4 x 4 CNC plasma tables are designed to bring CNC cutting capabilities to garage enthusiasts, schools, or small fabrication shops. With a small footprint, the system brings CNC technology down to a size that will fit in most any environment. The system is compatible with most plasma cutters and the driver software will accept any .DXF file or G-code. With a cutting rate of up to 150 ipm and a resolution of approximately .0006" the Torchmate system delivers speed and accuracy previously available to only the largest fabrication shops. Simply add your plasma cutter and computer and start cutting!

Torchmate also offers its CAD Lite design software capable of laying out shapes for cutting and exporting the files to the driver software. A water table is available to trap dust and sparks created during the cutting process. Finally, the Torchmate system can also be used for more than just plasma cutting. Secondary tooling can be mounted for CNC routing, drilling, milling, and even engraving.



Scan for Video



Finance as low as \$142.00 / Month

2 x 2 Deluxe

- 2' x 2', 2' x 4', or 4' x 4' cutting area
- 13" cutting depth (tool dependent)
- 150 ipm cut speed, 200 ipm traverse speed
- Approximately .0006" resolution

### Computer Requirements

- Windows XP / Vista / Windows 7
- 1 GB processor
- 1 GB ram
- 30 GB hard drive

- Footprint: 39" x 39" (2' x 2') & 39" x 63" (2' x 4') & 60" x 60" (4' x 4')
- 2 x-axis drive motors and 1 y-axis drive motor
- 2 amp micro-stepping stepper motors
- PC based controls with USB interface

- 5 piece fabricated steel construction
- 110v 15 amp power
- Available with or without water table
- Available with or without Torchmate CADLite design software



Finance as low as \$237.00 / Month

4 x 4 Deluxe

<b>Torchmate 2 x 2 CNC Plasma Deluxe Kit</b> .....	\$5,178.80
(Includes: 2 x 2 CNC Plasma System, 2 x 2 Water Table, CAD Lite design module, and Hand Torch Holder)	
Just add plasma and computer!	
<b>Torchmate 2 x 2 CNC Plasma System</b> .....	\$3,623.95
(Includes: gantry, 2 sides, extruded aluminum rails, hardware, tool mounting bracket, electronics box, cables, and driver software with instructions) Requires torch holder.	
<b>Torchmate 2 x 4 CNC Plasma Deluxe Kit</b> .....	\$6,860.70
(Includes: 2 x 4 CNC Plasma System, 2 x 4 Water Table, CAD Lite design module, and Hand Torch Holder)	
Just add plasma and computer!	
<b>Torchmate 2 x 4 CNC Plasma System</b> .....	\$4,833.95
(Includes: gantry, 2 sides, extruded aluminum rails, hardware, tool mounting bracket, electronics box, cables, and driver software with instructions) Requires torch holder.	
<b>Torchmate 4 x 4 CNC Plasma Deluxe Kit</b> .....	\$8,609.65
(Includes 4 x 4 CNC Plasma System, 4 x 4 Water Table, CAD Lite design module, and Machine Torch Holder)	
Just add plasma and computer.	
<b>Torchmate 4 x 4 CNC Plasma System</b> .....	\$6,044.45
(Includes: gantry, 2 sides, extruded aluminum rails, hardware, cable carrier system, tool mounting bracket, electronics box, cables, and driver software with instructions) Requires torch holder.	