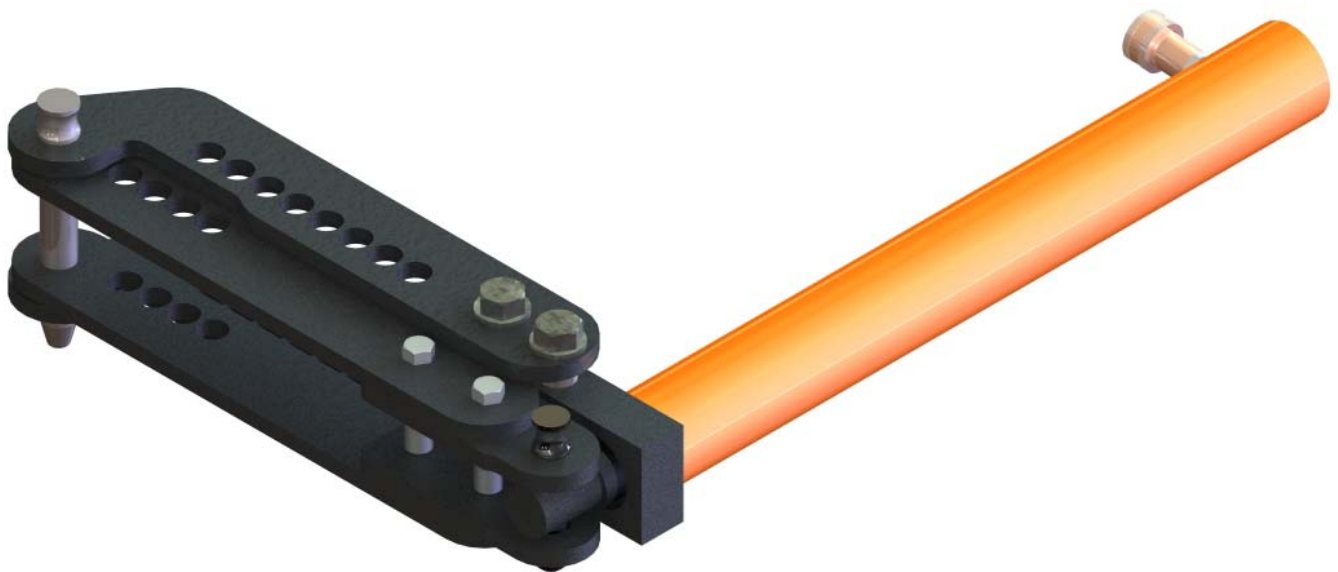


Pro-Tools

MADE IN THE U.S.A.

105 HYDRAULIC CONVERSION KIT



Trick-Tools.com

80 Truman Road

Pella, IA 50219

Phone: 1-877-VAN-SANT

E-mail: sales@trick-tools.com



Pro-Tools

MADE IN THE U.S.A.

CONGRATULATIONS ON YOUR PURCHASE OF A PRO-TOOLS **HYDRAULIC CONVERSION KIT** FOR THE MB-105. BEFORE YOU CAN BEGIN FEEDING THE BEAST, THERE ARE A FEW THINGS TO LOOK OVER. FIRST REVIEW THE CONTENTS OF THE PACKAGE. MAKE SURE YOU HAVE EVERYTHING THAT IS LISTED BELOW. NEXT YOU WANT TO REVIEW THE SAFETY INSTRUCTIONS AND THE OPERATING INSTRUCTIONS.

PACKAGE CONTENTS

1ea	CYLINDER YOKE
1ea	HYDRAULIC CYLINDER
2ea	SWING ARM SPACERS
2ea	SWING ARM EXTENSION PLATES
1ea	SWING ARM PIN
2ea	LOCK NUTS



SAFETY INSTRUCTIONS



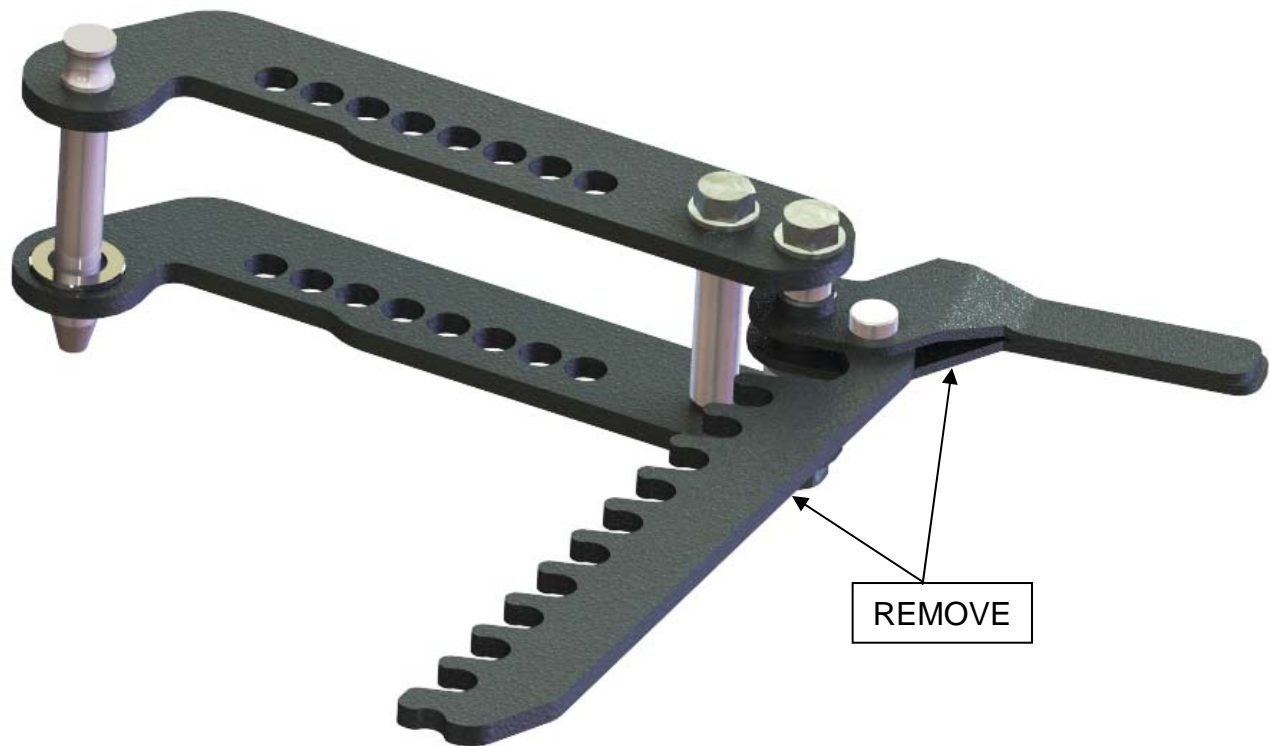
This safety page is to inform the operators of the precautions to be taken while operating this machine. The following are a few basic guidelines to follow, but as with any machinery good judgment and attention to safety should be applied at all times.

- 1 Always disconnect power before attempting to service this machine.
- 2 Always wear safety glasses or other approved eye protection while operating or servicing this machine
- 3 Keep all body parts and foreign objects away from moving parts. DO NOT reach into the machine without disconnecting the power source.
- 4 Do not attempt to override any safety device on the machine.
- 5 Do not operate the machine if it has been damaged or is not operating properly.
- 6 Do not wear loose fitting clothing or jewelry while operating or servicing this machine.
- 7 Replacement parts should have the same specification and operation as the original parts on the machine.
- 8 All guards and shields covers must be in place before operating the machine.
- 9 Before starting the machine be sure it is set up properly.
- 10 Make sure the machine is properly grounded.
- 11 The machine and work area should be kept neat and clean.
- 12 Do not operate or service this or any machine while under the influence of drugs or alcohol!

HYDRAULIC CONVERSION INSTALLATION

RECOMMENDED HYDRAULICS

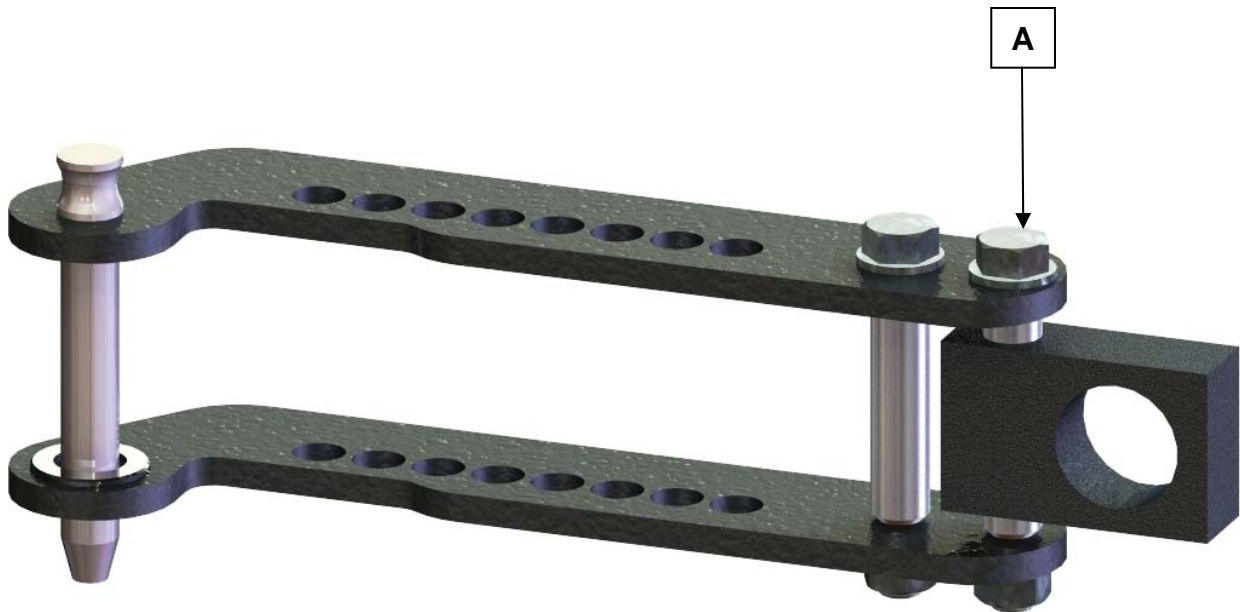
ENERPAC RC1014 – 10 TON CYLINDER WITH 2 ¼" x 14 TPI THREADS WILL SCREW INTO YOKE. CYLINDER SHAFT HAS 1" x 8 TPI INTERNAL THREADS TO ACCEPT THE ROUND PIVOT BLOCK. IT HAS BEEN OUR EXPERIENCE THAT BECAUSE THE CYLINDER IS SO LONG, IT IS NECESSARY TO USE A GOOD HEAVY DUTY PUMP WITH A LARGE VOLUME OF FLUID. WE RECOMMEND THE ENERPAC PUMP #PA133.



STEP 1

REMOVE RATCHET HANDLE AND COLLAR.

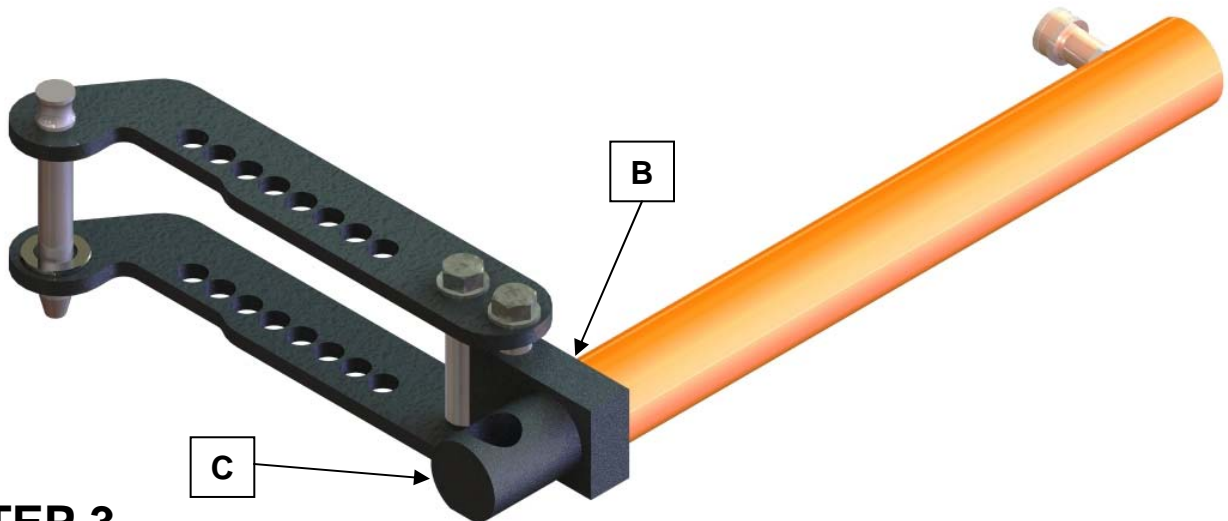
HYDRAULIC CONVERSION INSTALLATION



STEP 2

LOOSEN OUTER MOST FRAME BOLT (A) AND REMOVE.

SLIDE LOOSE SPACER INTO HYDRAULIC YOKE AND REATTACH.



STEP 3

B) SCREW HYDRAULIC CYLINDER AS FAR AS POSSIBLE INTO THREADED HOLE OF YOKE.

STEP 4

C) SCREW ROUND STEEL BILLET PIVOT BLOCK INTO END OF HYDRAULIC SHAFT.

HYDRAULIC CONVERSION INSTALLATION

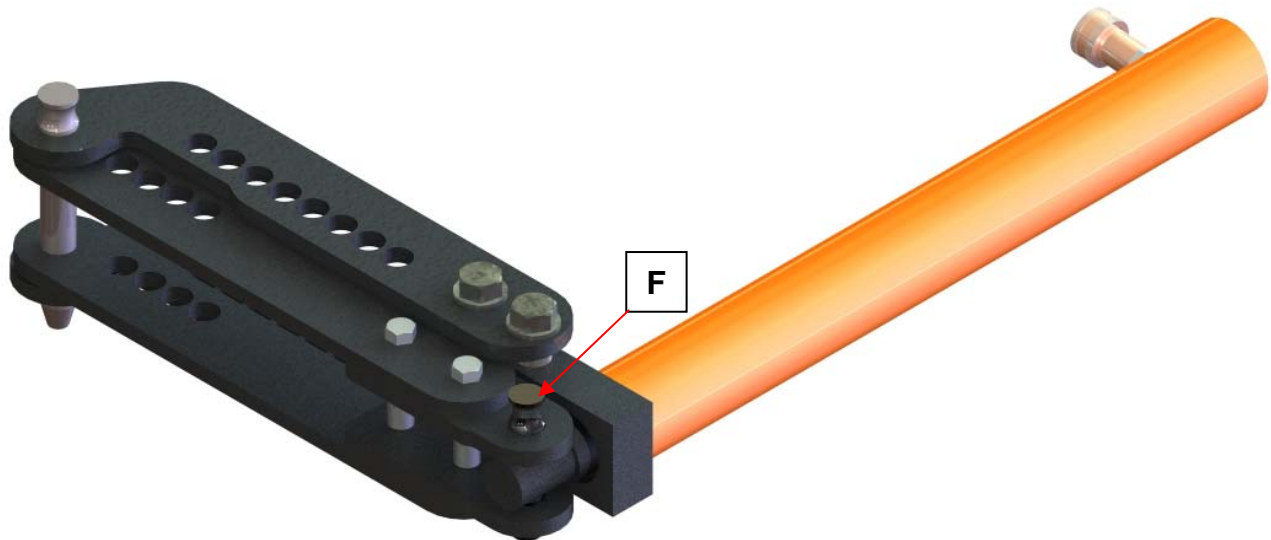
IMPORTANT

DO NOT INSTALL FLAT WASHERS OR LOCK WASHERS ON EITHER END OF THE SWING ARM BOLTS. USE LOCK NUTS PROVIDED.



STEP 5

RE-ASSEMBLE SWING ARM AS SHOWN ABOVE, USING EXTENSION PLATES (D) AND SPACERS (E) PROVIDED. ATTACH SWING ARM TO BENDER.



STEP 6

INSERT PIN (F) THRU EXTENSION PLATES AND PIVOT BLOCK.

THIS COMPLETE THE INSTALLATION, EXCEPT FOR CONNECTING THE PUMP.