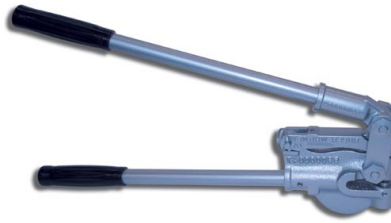


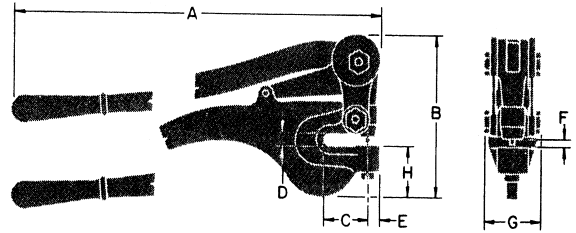
# NO. 7A PUNCH

## Instructions and Parts List



### DIMENSIONS - NO. 7A

REFERENCE	IN.	MM
A	18	457.2
B	5 3/4	146.05
C	1 5/8	41.28
D	7/16	11.11
E	1/2	2.7
F	5/16	7.94
G	2	50.8
H	1 7/8	47.63



**CARE:** Oil at hinge points, punch guide hole in Frame (1), and Punch (14) point.

### FOR MAXIMUM OPERATOR SAFETY DO:

1. Read and understand this manual.
2. Use only No. 7 punches and dies marked with a W or R-W designed for this tool.
3. Be sure you punch within the 2 1/2 ton capacity of this tool. Type and thickness of material versus final hole size will give this tonnage.
4. Wear safety glasses.

### FOR MAXIMUM OPERATOR SAFETY DO NOT:

1. Use punches and dies that are chipped or dulled.
2. Punch over capacity of the tool.
3. Nibble. Punch a full hole not a half hole as punch may contact die.

**OPERATION:** To change punches, remove Detent Pin (12) and pull Upper Handle Assembly back to slide Punch (14) from Eccentric Arm (5) slot. Lift Punch (14) from guide hole. Put new Punch in guide hole, and move Eccentric Arm (5) forward until Punch is engaged in Eccentric Arm slot. Replace Detent Pin (12).

Die (15) is threaded into Frame (1). To avoid breakage when removing Die, use Wrench (16) or screwdriver wide enough to engage both slots of die.



**Trick-Tools.com**

75 Truman Road

Pella, IA 50219

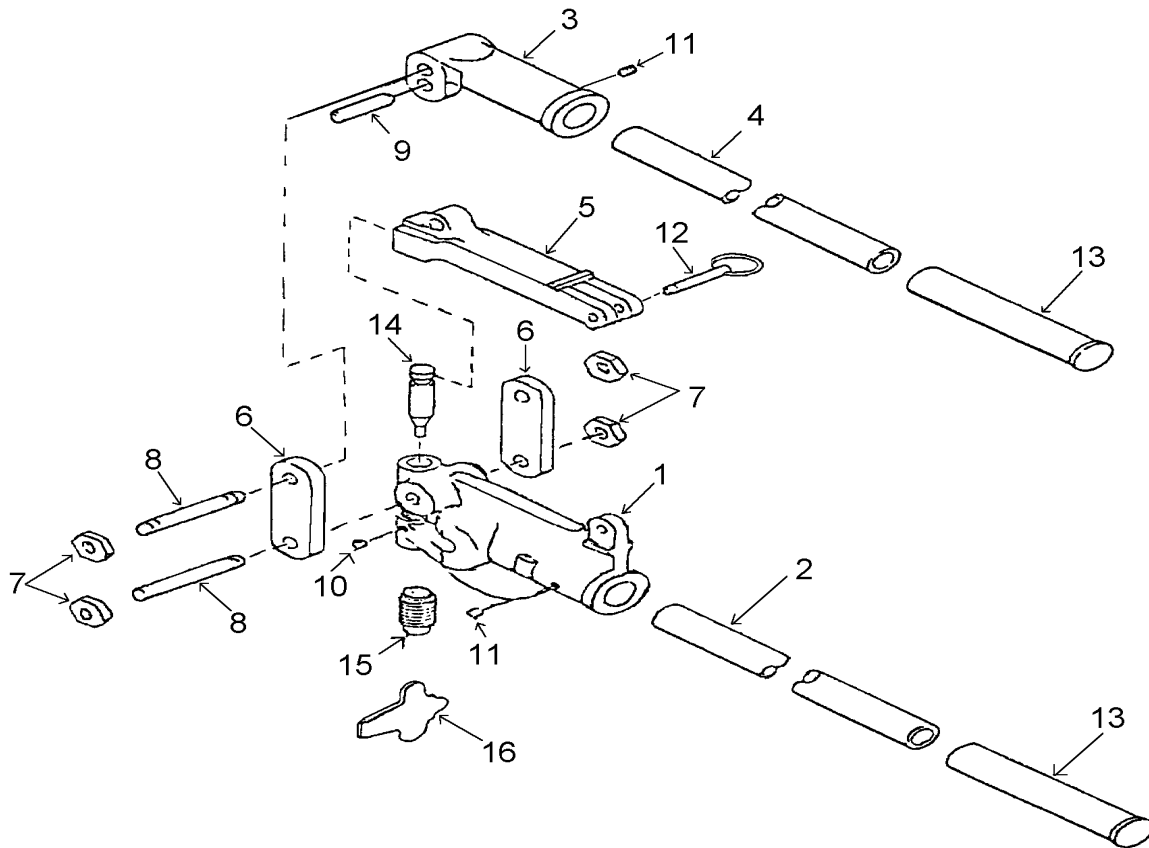
Phone: 1-877-VAN-SANT

E-mail: sales@trick-tools.com



# NO. 7A PUNCH

## Parts List



ITEM NO.	PART NO.	PART NAME	QTY.
1	730140183	Frame - "C"	1
2	730460184	Handle, Lower Extension	1
3	730460185	Handle, Operating	1
4	730460186	Handle, Operating Extension	1
5	591000003	Arm, Eccentric	1
6	730240187	Link	2
7	730160042	Nut, Eccentric Bolt	4
8	730160188	Pin, Link	2
9	600053340	Pin, Dowel 3/8 x 1"	1
10	600325902	Screw, Headless Set	1
11	621012124	Screw, Socket Set Cap	2
12	600083602	Pin, Detent	1
13	656356301	Grip, Flex Vinyl	2
14	300070219	Punch, 7/32" Rd.	1
15	310070219	Die, 7/32" Rd.	1
16	730480009	Wrench, Die Adjusting	1
17	139010070	Bench Mounting Base (Not Shown)	1