



Parts List for #578173 Deluxe Grinder Stand

⚠ WARNING: This product can expose you to chemicals including lead which is known to the State of California to cause cancer and birth defects or other reproductive harm. For more information go to <http://www.p65warnings.ca.gov>.

⚠ WARNING: Some dust, fumes and gases created by power sanding, sawing, grinding, drilling, welding and other construction activities contain chemicals known to the State of California to cause cancer and birth defects or other reproductive harm. Some examples of these chemicals are:

- lead from lead based paint
- crystalline silica from bricks, cement and other masonry products
- arsenic and chromium from chemically treated lumber

Your risk of exposure varies, depending on how often you do this type of work. To reduce your exposure to these chemicals, work in a well-ventilated area and work with approved safety equipment, such as dust masks that are specifically designed to filter out microscopic particles. For more information go to <http://www.p65warnings.ca.gov/> and <http://www.p65warnings.ca.gov/wood>.

Assemble the stand using the drawing at right as reference.

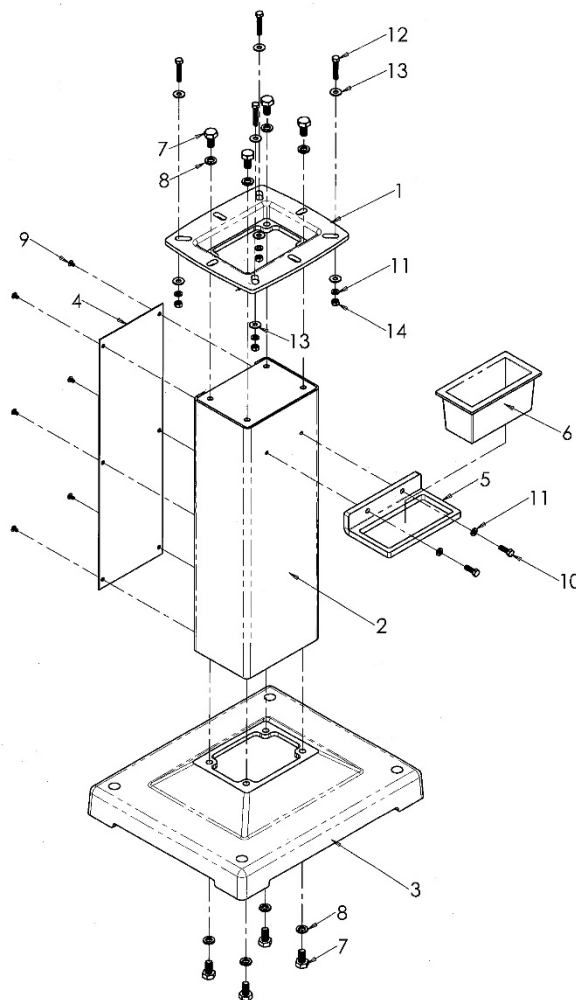
Tools required for assembly:

Screwdriver, flat or cross-point
12mm and 3/4" wrenches

1. Install post (#2) onto base (3). Secure with four socket head cap screws and washers (7/8).
2. Install water pot frame (5) with screws and washers (10/11).
3. Place water pot (6) into frame (5).
4. Install platform (1) onto post (2) with four screws and washers (7/8).
5. Install cover plate (4) with screws (9).
6. Mount grinder to platform using fasteners (11-14).

Operation: Fill water pot (6) with water. Dip workpiece into the water to cool it after grinding. Do not apply water directly to the grinding wheels.

Index	Part No.	Description	Qty.
1	DBGS-01	Platform	1
2	DBGS-02	Post	1
3	DBGS-03	Base	1
4	DBGS-04	Cover Plate	1
5	DBGS-05	Water Pot Frame	1
6	IBGS-06	Water Pot	1
7	TS-0070011	Hex Cap Screw, 1/2-13x1	8
8	TS-0720111	Lock Washer, 1/2	8
9	TS-0813022	Pan Head Machine Screw 1/4-20x3/8	6
10	TS-0051051	Hex Cap Screw, 5/16-18x1	2
11	TS-0720081	Lock Washer, 5/16	6
12	TS-1490071	Hex Cap Screw, M8x40	4
13	TS-2361081	Lock Washer, M8	8
14	TS-1540061	Hex Nut, M8	4



Specifications

Stock number..... 578173
 Assembled size (in.)..... 20"L x 17"W x 33"H
 Packing size (in.)..... 28-1/8"L x 17-3/4"W x 12-1/4"H
 Net weight (lbs)..... 108
 Shipping weight (lbs)..... 116

Specifications were current at time of publication, but because of our policy of continuous improvement, JET reserves the right to change specifications at any time and without prior notice, without incurring obligations.