



***UNRIVALLED QUALITY***

P.O. Box 606, Creston, CA 93432

PHONE: 805.239.5972 FAX: 805.239.5973 EMAIL: info@jmrmanufacturing.com

## **BELT SANDER P/N BS248**

### **WARNING**

- 1. THIS BELT SANDER WILL REMOVE SKIN AND BONE INSTANTANEOUSLY. READ AND FOLLOW ALL THE BELOW SAFETY WARNINGS!**
- 2. USE ONLY HIGH SPEED HIGH QUALITY 2"x48" REPLACEMENT BELTS.**
- 3. DO NOT open the side cover for any reason while the belt sander is ON.**
- 4. Always wear face and eye protection while operating the belt sander.**
- 5. Always pay close attention to what you are doing. Turn off cell phone, pager, etc when using this machine.**
- 6. This machine is meant to be operated by competent individuals who have a thorough understanding of belt sanders and machines in general.**
- 7. The belt sander is intended to be used by a single operator. Never allow a second individual to operate the machine while another holds the stock.**
- 8. Never put your hands or other body parts into the belt sander apparatus.**
- 9. Never wear loose clothing or long hair while operating the belt sander.**
- 10. Always work in a clean, safe, well lit, level work area.**
- 11. Never operate the belt sander with broken, worn or damaged parts.**

- 12. DO NOT attempt to repair and reuse any damaged belt sander parts.**
- 13. Replace belt immediately if it becomes frayed, worn or damaged.**
- 14. DO NOT reuse worn, frayed or damaged belts.**
- 15. Be aware of the proper operating direction if “Directional belts” are used.**
- 16. Never push a sharp or pointed object directly onto the face of the belt. It could split the belt.**
- 17. Observe the belt manufacturer’s warnings and recommendations.**
- 18. Unplug the belt sander from wall power before belt changes, maintenance or repairs.**
- 19. User assumes all risks when using this product.**

#### **NOTE**

The JMR Belt Sander has been fully tested and adjusted at the factory. Initial belt tracking has been setup at the factory. **DO NOT** disturb the tracking knob until after belt installation.

### **BELT SANDER MOUNTING**

1. The belt sand may be mounted to any stable work surface using four (4) 5/16” bolts. The length of the bolt will be determined by the surface being mounted on. An optional mounting stand (BSS100) is also available from JMR Manufacturing.
2. The belt sander is setup to operate on 115v by the manufacturer. The belt sander may also be wired to operate on 208/230v. Please consult a licensed electrician to make the required wiring changes.
3. Operate the belt sander (115v) on a circuit that is capable holding a 15A load.

### **BELT SANDER SETUP AND OPERATION**

#### **NOTE**

The JMR Belt Sander has been fully tested and adjusted at the factory. Initial belt tracking has been setup at the factory. **DO NOT** disturb the tracking knob until after initial belt installation.

1. Disconnect belt sander from wall power.
2. Open the cover. See Figure 1. Please note that the side cover knob is not shipped installed.
3. Position the high quality 2"x48" belt over the lower contact wheel and the upper tensioning/tracking wheel, centering the belt on the wheel faces. See Figure 1.
4. Position the belt over the rear drive wheel and center the belt on the wheel face.
5. Turn the belt tensioner knob until the belt is snug. DO NOT over tension the belt.
6. Check the backup plate/belt spacing. It should just touch the back of the belt. Make any adjustments using the supplied 1/4" allen wrench.
7. By hand, carefully spin the rear drive wheel a few turns to check the initial belt tracking.

### **WARNING**

**Be aware of what you are doing so you will not pinch fingers  
between the belt and drive roller.**

8. If required, adjust the tracking knob to get the "rough" tracking. Turn the tracking knob clockwise ⤵ to move the belt left and counter clockwise ⤴ to move the belt right.
9. Close the side cover and secure it with the small knob.
10. Reconnect belt sander to wall power.
11. Keeping clear of the belt, quickly jog the belt sander on then off while observing the belt tracking.
12. If the belt tracking is close to correct, power on the belt sander and "fine tune" the tracking with the tracking knob. Turn the tracking knob clockwise ⤵ to move the belt left and counter clockwise ⤴ to move the belt right.
13. If the tracking is not correct repeat Steps 11 & 12.
14. Disconnect belt sander from wall power.
15. Recheck the backer/belt spacing. It should just touch the back of the belt. Make any adjustments using the supplied 1/4" allen wrench.
16. Attach the platen to the backup plate using the supplied 5/16" allen screw and washer. See Figure 2.
17. Check the platen/belt spacing. An approx. 1/16" space from the face of the belt (this will vary depending on the belt grit). Make any adjustments using the supplied 1/4" allen wrench.
18. Reconnect belt sander to wall power.

## MAINTENANCE

1. The belt sander is relatively maintenance free. An occasional wipe down of the outer surfaces and brushing out of the interior is all that is required.

### **WARNING**

**DO NOT use compressed air to clean out the interior of the belt sander.**

2. Periodically check and tighten if necessary all nuts and bolts.

### **CAUTION**

**The drive wheel is secured to the motor shaft with a left hand thread nut.**

3. If needed, lube the tensioner/tracking assembly with dry lube (Teflon™) ONLY.

### **CAUTION**

**Because of close manufacturing tolerances, DO NOT use any liquid or paste lubricants on the tensioner/tracking assembly. These types of lubricants will attract and hold metal particles and will prevent the tensioner/tracking assembly from operating properly.**

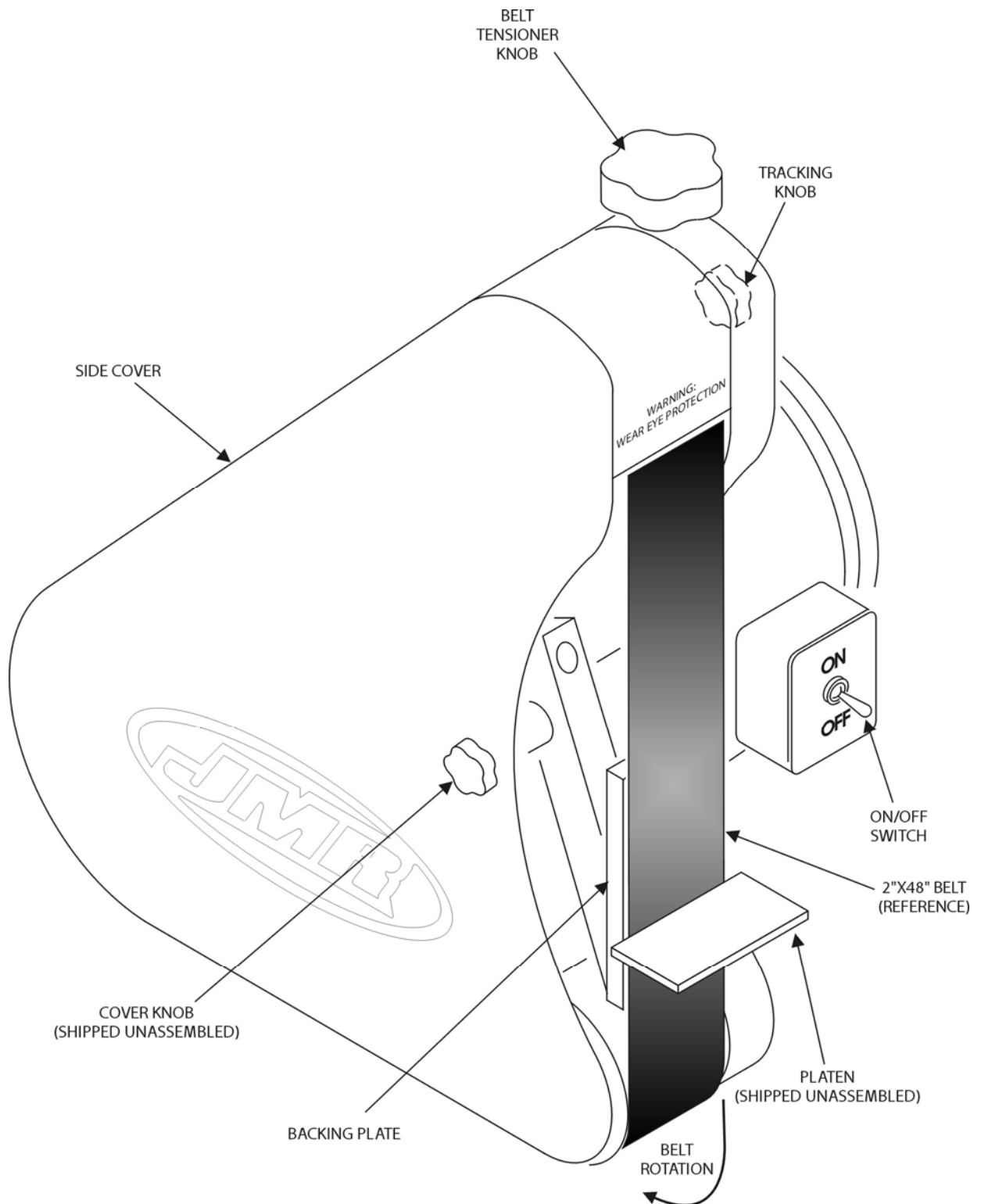
4. If required, the tensioner/tracker assembly may be serviced as follows (reference Figure 3):
  - a) Disconnect the belt sander from wall power.
  - b) Remove the cover knob and open the side cover.
  - c) Loosen the tension on the belt by turning the tensioner/tracking knob and remove the belt.
  - d) Remove the nut and washer retaining the tensioner/tracking wheel to its shaft.
  - e) Remove the tensioner/tracking wheel.
  - f) Remove the tensioner/tracking wheel shaft.
  - g) Remove the tensioner/tracking knob.
  - h) Carefully remove the seal.
  - i) Remove the tensioner/tracking thimble noting its orientation in its bore.
  - j) Remove the tension spring locator noting its orientation to the spring.
  - k) Remove the tension spring.
  - l) Carefully clean the tensioner/tracking thimble bore. Making sure to remove all metal particles.
  - m) Coat the bore using dry lube (Teflon™) only.
  - n) Insert the tensioning spring.
  - o) Insert the tensioning spring locator in the same orientation as noted in

Step j.

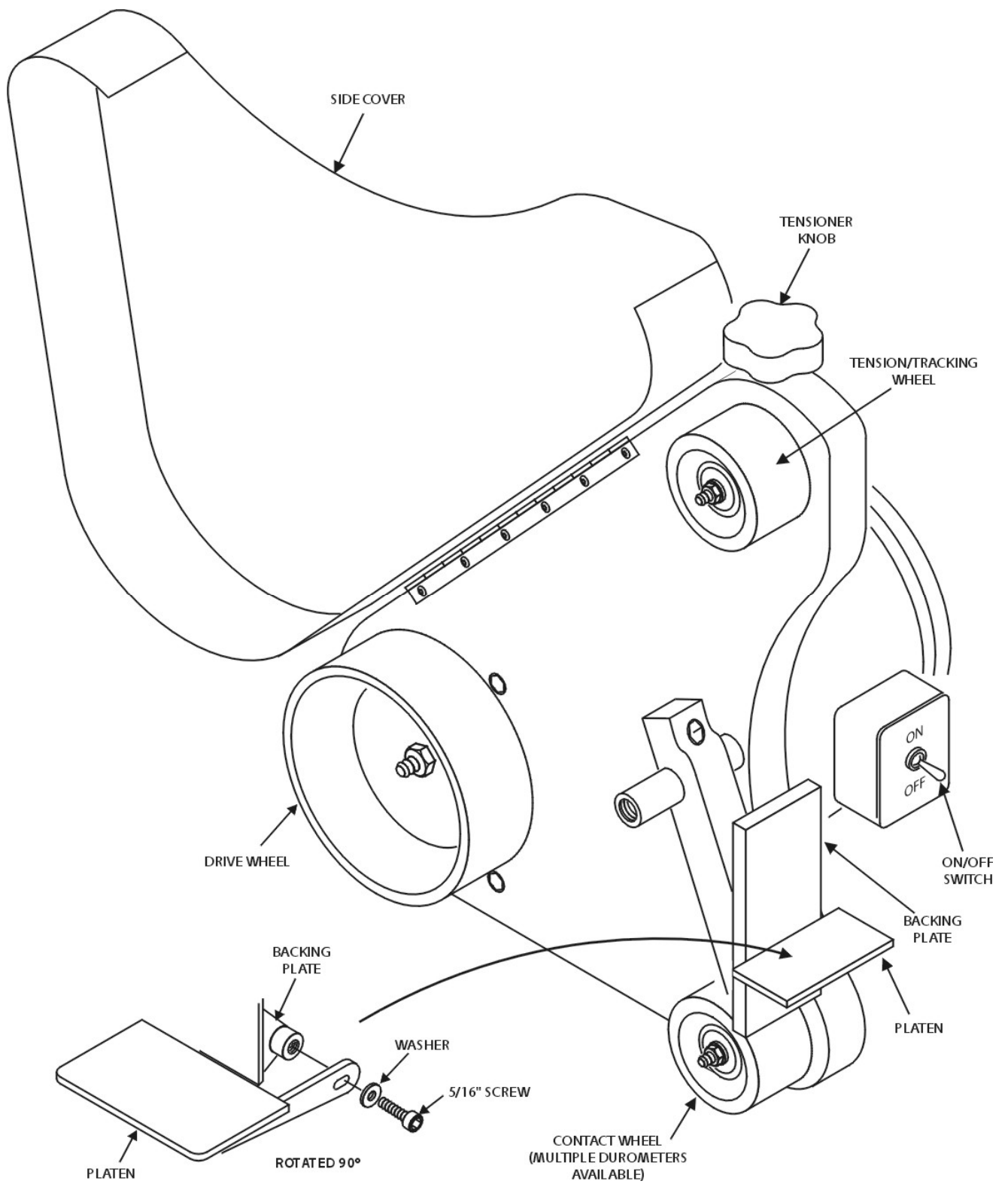
- p) Coat the tensioner/tracking thimble using dry lube (Teflon™) only.
- q) Insert the tensioner/tracking thimble in the same orientation as noted in Step i.
- r) Slide the tensioner/tracking thimble up and down in its bore to insure free movement.
- s) Install the seal.
- t) Insert the tensioner/tracking wheel shaft into the tensioner/tracker thimble and tighten.
- u) Place the tensioner/tracking wheel onto the shaft and secure it with the washer and nut.
- v) Reinstall the tensioner/tracking knob.
- w) Reinstall the belt using the steps in the **Belt Sander Setup and Operation** section.
- x) Close the side cover and secure with the side cover knob.

## **WARRANTY**

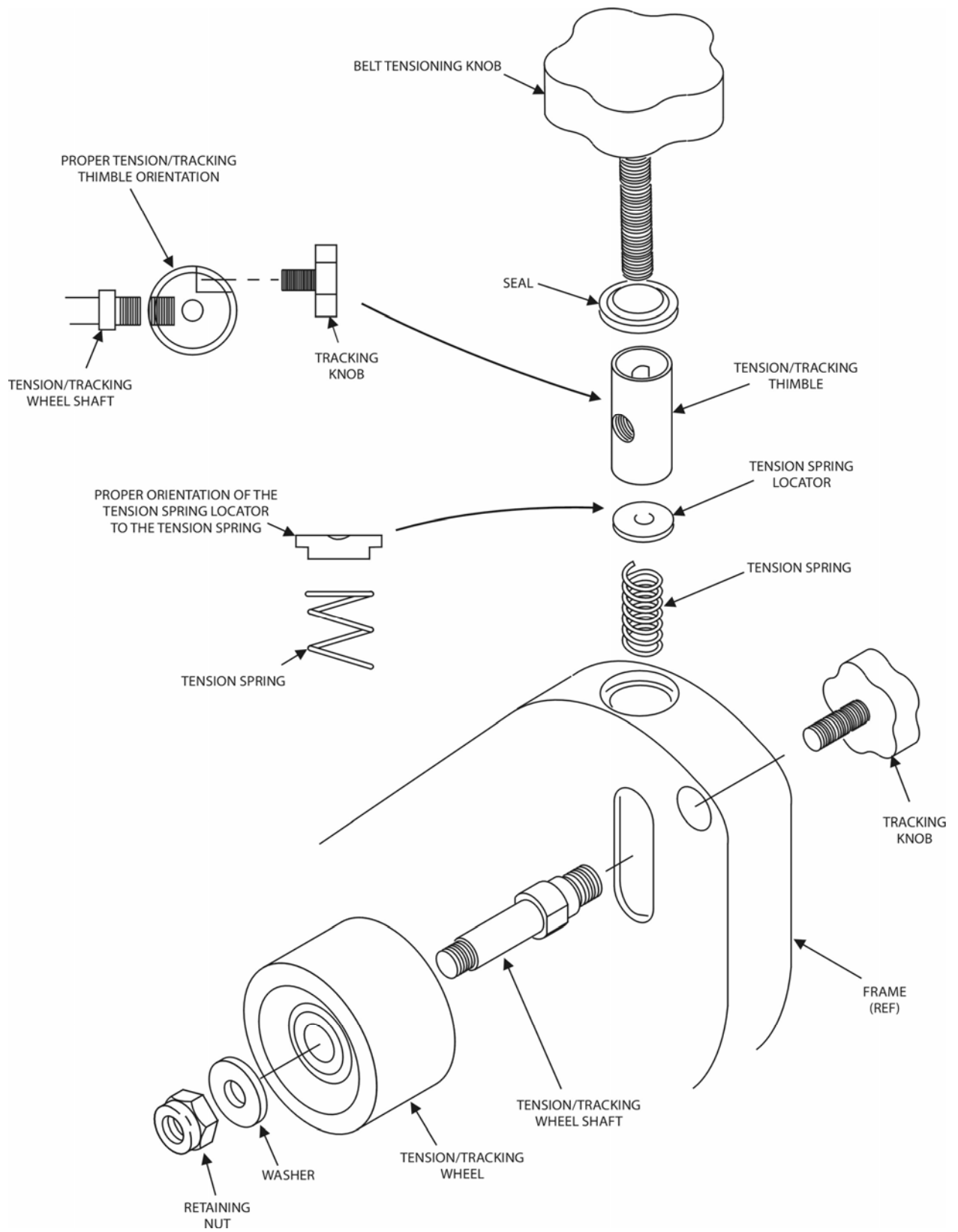
1. One year limited warranty on belt sander.
2. Warranty item must be sent to JMR Manufacturing postage pre-paid for inspection. JMR Manufacturing will replace or repair item at their discretion.
3. JMR Manufacturing makes every attempt to satisfy customers as quickly as possible.
4. JMR Manufacturing will not accept any responsibility for personal injury or property damage arising from the failure of any parts manufactured and/or sold by JMR Manufacturing, LLC.



**Figure 1. Belt Sander overall view.**

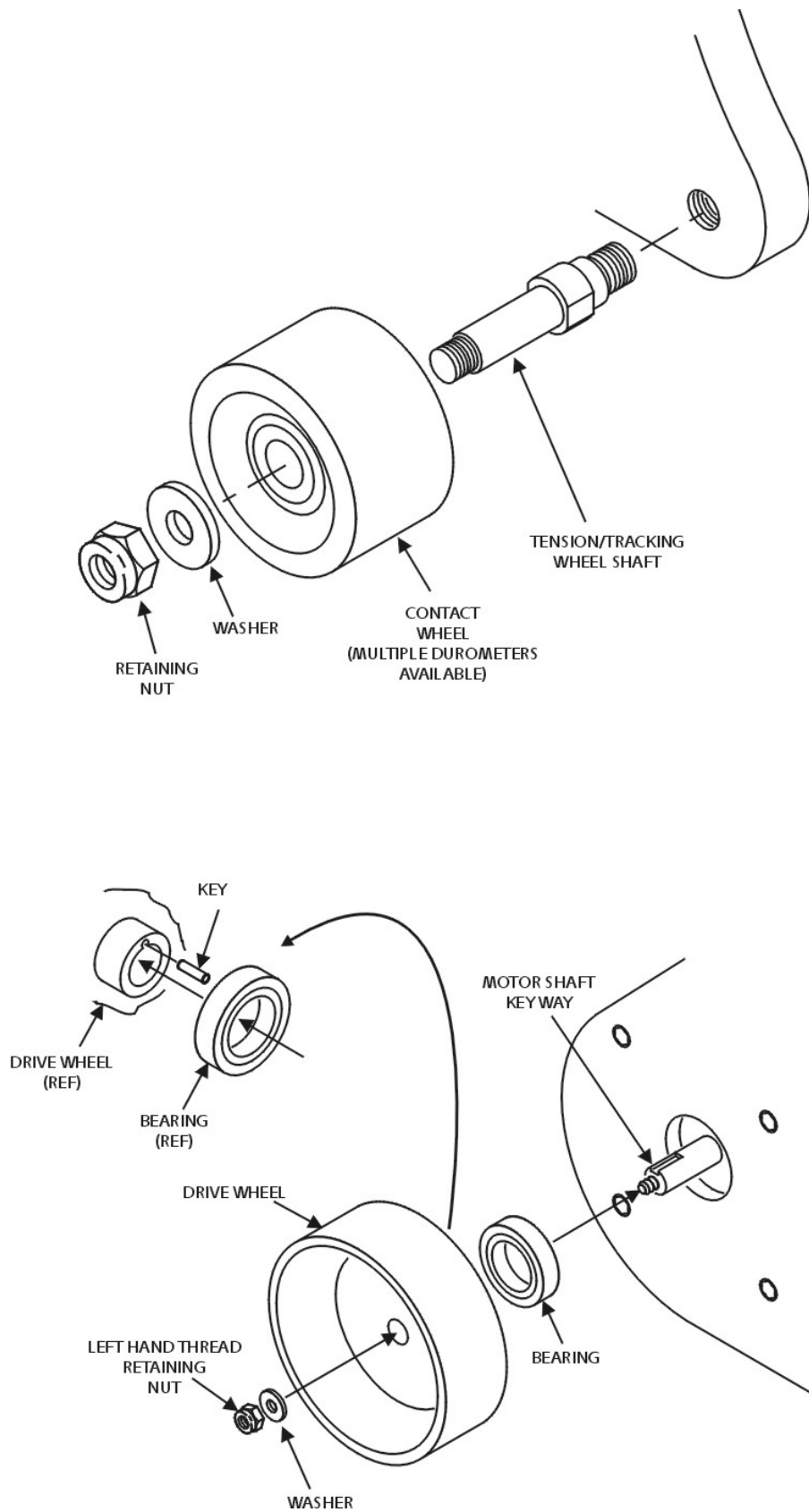


**Figure 2. Belt Sander interior.**



**Figure 3. Tracking/Tensioning exploded view.**





**Figure 4. Contact wheel and Drive wheel exploded view.**