

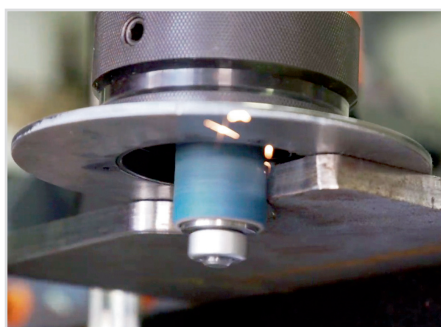
B15 Electra

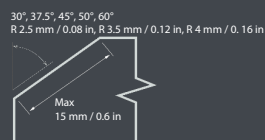


High Performance
Motor and Gearbox



REVOLVING ERGONOMIC HANDLE





**Designed for beveling and deburring of parts, internal and external radiuses and holes.
Specially designed for producing visual bevel and welding preparation.
Powerful electric drive for extreme loads.**

- Scale for accurate bevel size adjustment.
- For beveling and deburring of steel, aluminium and other materials.
- Replaceable head for changing bevel angle.
- Handheld powerful equipment.
- Swivelling ergonomic handle.
- Edge rounding function, preparation before surface treatment.

Technical data:

Bevel angle:	Replaceable head 30°, 37.5°, 45°, 50°, 60° - other angles on demand
Bevel width:	0 to 15 mm / 0 to 0.6 in < 400 MPa / 58 015 PSI 0 to 8 mm / 0 to 0.3 in > 400 MPa / 58 015 PSI
Rounding app:	R 2,5 mm, R 3,5 mm, R 4 mm / R 0,1 in, R 0,14 in, R 0,16 in
Engine:	2500 W / 2000W
Speed:	6600 rpm
Weight:	9.5 kg / 20.9 lb
Number of cutting inserts:	6 pcs

Included in price:

Beveling and deburring system B15 ELECTRA (without the head).
Tools for an operators.
Packed in a cardboard.
User manual.



Art. Nr. 25350

Machine name:

Machine name:	Art. Nr.
Beveling and deburring system B15 ELECTRA (1 Phase - 220 V)	25250
Beveling and deburring system B15 ELECTRA (1 Phase - 110 V)	25251

Accessories:

Accessories:	Art. Nr.
30° cutting head (including inserts, screws, bolts and roller). Guide roller diameter Ø 34 mm / 1.34 in	27223
37.5° cutting head (including inserts, screws, bolts and roller). Guide roller diameter Ø 28 mm / 1.10 in	27227
45° cutting head (including inserts, screws, bolts and roller). Guide roller diameter Ø 28 mm / 1.10 in	27222
50° cutting head (including inserts, screws, bolts and roller). Guide roller diameter Ø 28 mm / 1.10 in	27224
60° cutting head (including inserts, screws, bolts and roller). Guide roller diameter Ø 27 mm / 1.06 in	27240
Cutting head with non-standard angle. (Including inserts, screws, bolts and roller)	27XXX
Coated cutting inserts - four-sided (pack of 10 pcs)	27231
Edge rounding cutter R2.5 mm / 0.08 in (including inserts, screws, bolts and roller). Guide roller diameter Ø 41 mm / 1.61 in	27234
Edge rounding cutter R3.5 mm / 0.12 in (including inserts, screws, bolts and roller). Guide roller diameter Ø 40 mm / 1.57 in	27233
Cutting inserts for rounding edges R2.5 mm / 0.08 in (pack of 10 pcs)	26109
Cutting inserts for rounding edges R3.5 mm / 0.12 in (pack of 10 pcs)	26110
Cutting inserts for rounding edges R4mm / 0.16 in (pack of 10 pcs). Compatible with head R3.5 mm / 0.12 in	26111
Screw for the inserts	27241
Screw for the radius / rounding inserts	27242
Screw for the impeler / guiding roller	25250.16
Screw for the impeler overlapping (set screw + expansion washer)	25250.16L
Dock station B-Dock (Beveler B15 Electra is not included)	25350
Grinding adapter - Edge Cleaner (Including 10 pcs grinding rings grain 40, 1 pc guiding roller)	25310
Spare polyurethane guiding roller	25311
Grinding rings grain 40 (pack of 50 pcs)	25312
Special lubricating paste for the milling heads. Prevents seizing up, wear, cold-welding, solidifying of the threads 120g.	33005



Art. Nr. 25310



Art. Nr. 27234



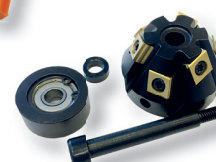
Art. Nr. 27231



Art. Nr. 25312



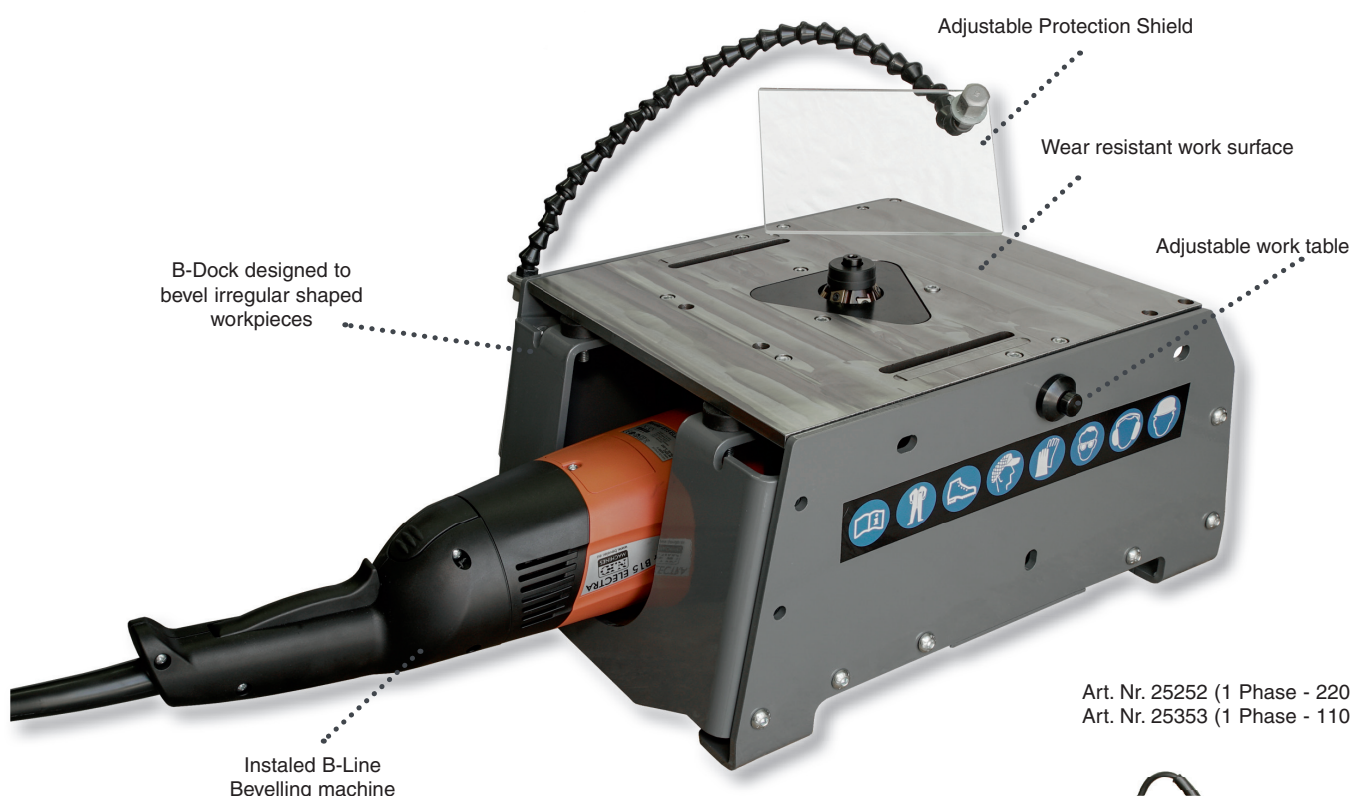
Art. Nr. 26109



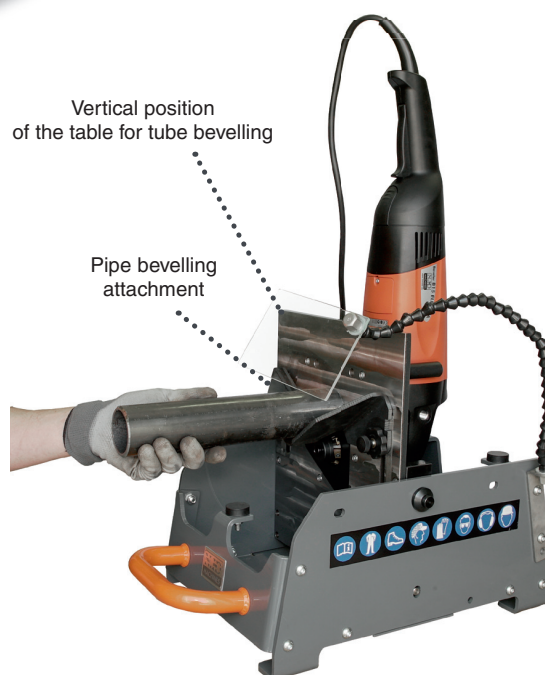
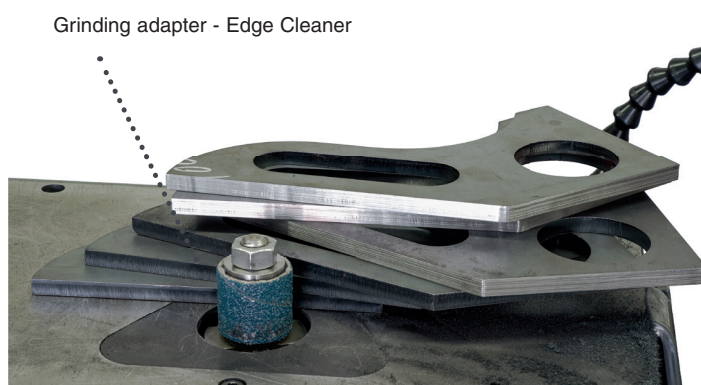
Art. Nr. 27223

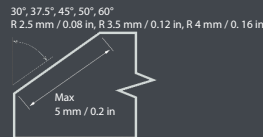


B-Dock + B15 Electra set



Art. Nr. 25252 (1 Phase - 220 V)
Art. Nr. 25353 (1 Phase - 110 V)





Dock station B-Dock enables the B15 Electra to be used stationary. It is designed for beveling small workpieces which would be hard or impossible to clamp and bevel the standard way. The system retains all advantages of the hand-held machine B15 Electra. The B-Dock system makes it possible to bevel irregular shapes, straight workpieces and holes. Radiused edges are also possible with the radius milling head. Specialty guide attachments and an easy, vertical worktable adjustment allow for beveling of pipe and tube.

By purchasing the set B-Dock + B15 Electra you are getting a universal beveling system. The B15 Electra can be used independently from the B-Dock as a hand-held beveling machine.

- Tilting table for easy attachment of B15 Electra
- Vertical position of the table for convenient pipe beveling
- Straight edge and pipe guide attachments included in the price
- Adjustable protection shield increases work safety
- Robust design insures precision beveling and durability of the B-dock
- The Hardox work surface is wear resistant
- Light weight system is easy to transport
- Can be used with B15 Electra or B10 Electra machines

Technical data:

Bevel angle:	see previous page (technical data for B15 Electra)
Bevel width:	0 to 5mm / 0 to 0.2 in
Rounding app:	see previous page (technical data for B15 Electra)
Motor:	see previous page (technical data for B15 Electra)
RPM:	see previous page (technical data for B15 Electra)
Feed:	manual
Weight:	28kg / 62 lb (incl. B15 Electra 37,5kg / 82,7 lb)
Dimensions:	443 x 368 x 220mm / 17,5 x 14,5 x 8,7 in

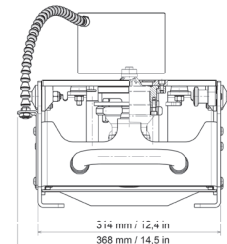
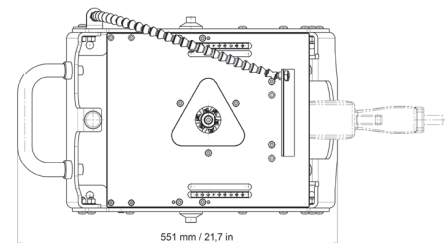
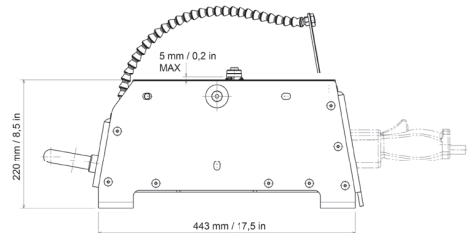
Included in price:

Dock station B-dock
Beveling and deburring system B15 Electra
Operating tools
Carton box packaging
Manual

Machine name:

Machine name:	Art. Nr.
The Beveling System B-Dock+ B15 Electra set, without the milling head (1 Phase - 220 V)	25252
The Beveling System B-Dock+ B15 Electra set, without the milling head (1 Phase - 110 V)	25253

Other accessories see previous page - B15 Electra



Pipe bevelling attachment



Straight edge bevelling guide

