

Flextur™

Efficiency is Within Reach.



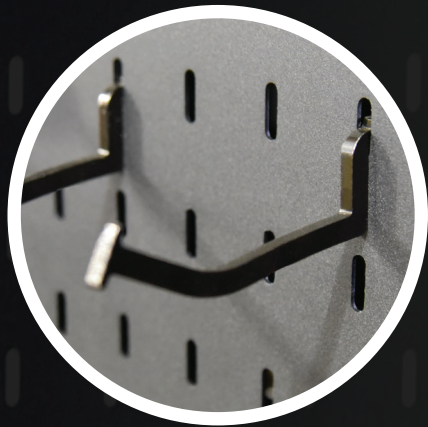
Made in USA

Inspire

a culture of continuous improvement.

Organize, Standardize & Increase Efficiency.

Flextur's purpose is to inspire a culture of continuous improvement. Promoting LEAN enterprise. Empowering individuals and propelling organizations. Our robust Weld Tables, Work Benches, Work Stations, Work Carts, and Packaging Stations unite customization and standardization in a unique way. Always placing greater efficiency within reach.



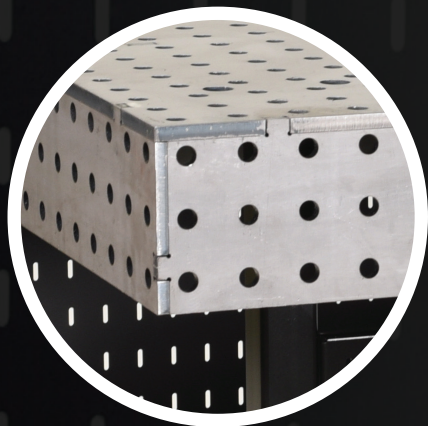
Organization

Standardization without loss of flexibility and personal preference. Gridlok™ is the backbone of Flextur's LEAN systems - metal pegboard with a patented slot design and extra-strong hooks engineered for industrial applications. Wall mounted or incorporated into our products it can organize tools. Paperwork. Even chaotic employees.



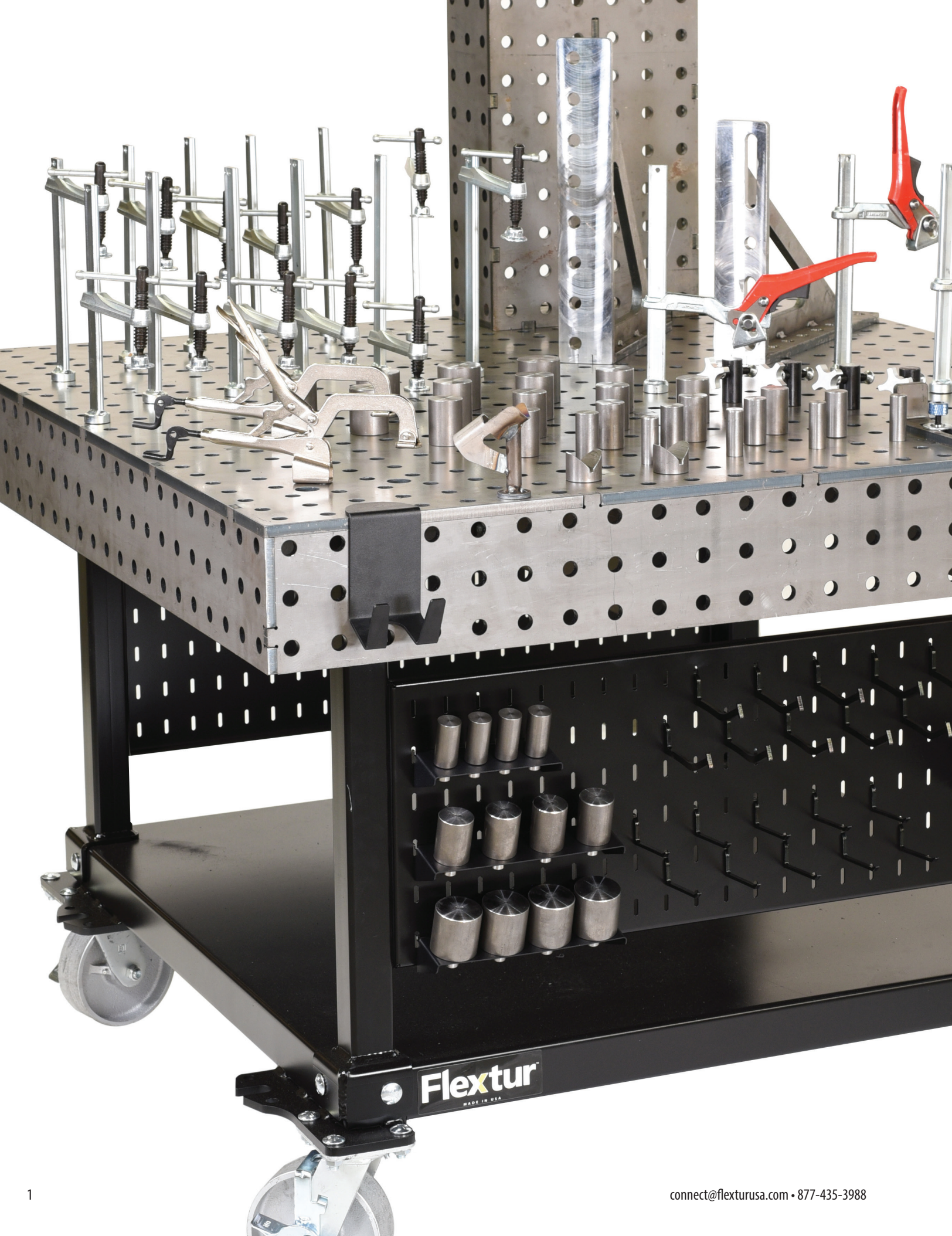
Mobility

Flextur provides agile, productive, and profitable solutions. We understand the value of assembling, moving, and storing items safely and efficiently. Casters are smart and provide flexibility through mobility. Our products save time and steps. Easily move about taking what you need with you. Keeping everything within reach.



Built on LEAN Concepts

Through our LEAN journey we've witnessed how Flextur products improved our business, and other businesses serving in countless capacities. Products like Weld Tables that reduce set up times and the need for costly fixtures. Workstations and customizable solutions that empower employees. And Workbenches and Pack Stations that can handle anything you can drop, clamp, hammer, assemble, package, or throw at them.





Products that **Revolutionize**

Custom fabrication doesn't have to be complicated. Flextur provides agile, productive, and profitable solutions for today's custom fabricators. Flextur's robust Weld Tables will reduce set up times and the need for costly fixtures. Tops are 1/2" and precise. Always. Customizable tool storage and a variety of accessory packages are available. Weight ratings and price points to meet your application and budget.

Change is Inevitable

Being able to adapt is critical to your success. Flextur Weld Tables provide the flexibility you need to remain competitive in today's market. A fully equipped welding cell, utilizing a Flextur Work Station and Weld Table, provides the ultimate in workflow agility.



Flextur Weld Table Features:

- Eliminate costly and time-consuming jigs
- Ultimate flexibility for diverse applications
- Greater efficiency throughout the process
- Improves the performance of any welder
- On board Gridlok Panels for easy access tool storage
- Accepts all Gridlok™ Accessories
- Works seamlessly with Flextur's Work Stations
- **Made in USA**

Flextur
Efficiency is Within Reach.



Flextur

Revolutionize

Weld Tables



36" x 30" Weld Table

Stationary

Specifications: **36"L x 30"W x 35"H**

Capacity: **1,000lbs.**

Part Number: **78909250**

Additional Details on Page 20



36" x 72" Weld Table

Stationary

Specifications: **36"L x 72"W x 35"H**

Capacity: **2,000lbs.**

Part Number: **78909265**

Additional Details on Page 20



48" x 48" Weld Table

With Skirt & Caster Base

Specifications: **48"L x 48"W x 35"H**

Capacity: **2,000lbs.**

Part Number: **78909515**

Additional Details on Page 20



48" x 96" Weld Table

With Skirt & Caster Base

Specifications: **48"L x 96"W x 35"H**

Capacity: **3,000lbs.**

Part Number: **78909525**

Additional Details on Page 20

Flextur
Efficiency is Within Reach.

Weld Table Fixturing Kits



27 Piece Fixturing Kit

Part Number: **78908260**

Additional Details on Page 20

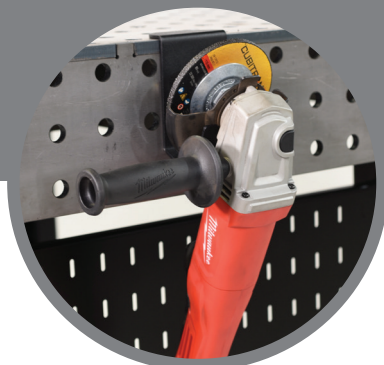


57 Piece Fixturing Kit

Part Number: **78908270**

Additional Details on Page 20

Weld Table Accessories



Tool Holder

Part Number: **78908750**

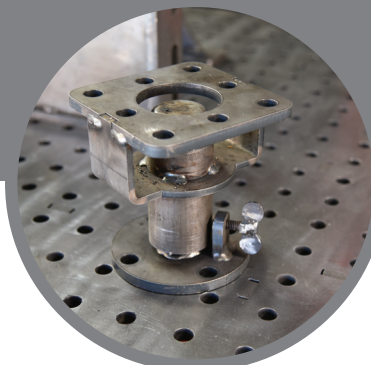
Additional Details on Page 22



Weld Gun Holder

Part Number: **78908905**

Additional Details on Page 22



6" Turn Table

Specifications: **6"L x 5.5"W x 5.5"H**

Part Number: **78908780**

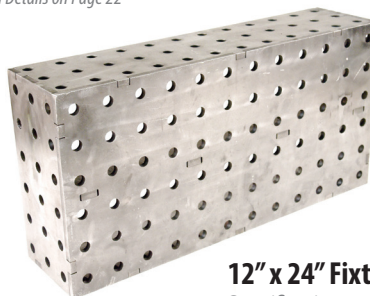
Additional Details on Page 22



Ratchet Handle Clamp

Part Number: **78908160**

Additional Details on Page 22



12" x 24" Fixture Block

Specifications: **12"L x 24"W x 6"H**

Part Number: **78908245**

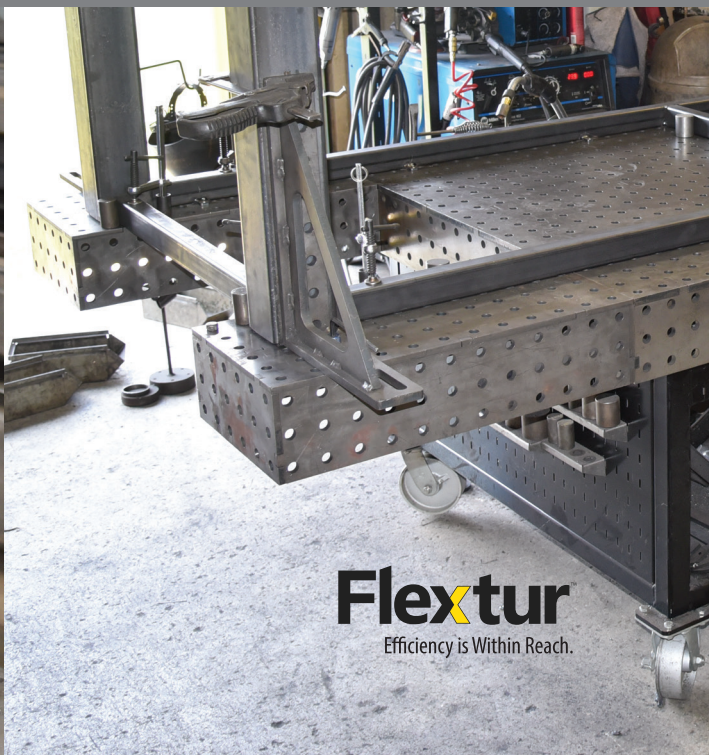
Additional Details on Page 22



95 Piece Fixturing Kit
Part Number: 78908280
Additional Details on Page 20



**"We've probably made over a million dollars worth of products on this table,
and have only, literally, barely scratched the surface - Foster Welding"**



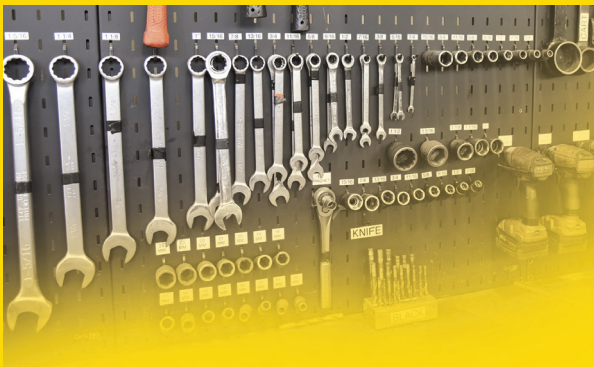
Flextur
Efficiency is Within Reach.

Products that Empower

Workbenches that can handle anything you can drop, clamp, hammer, assemble, or throw at them. Frustrated with lightweight pegboards? No longer. Available with Gridlok™ metal pegboard. Powerful hooks and accessories. Workbenches share many features but come with different weight ratings and price points based on your application and budget.

The New Generation of Productivity

Flextur Work Benches put greater efficiency in reach. Even the very best tool chests and benches constructed from the strongest materials are useless if not convenient for the user. We've incorporated a simple, but powerful, design utilizing Gridlok industrial metal pegboard that is uniquely adaptable for storage and organization. 3/8" steel tops and heavy duty lockable casters are available. We also have lighter 14 gauge Work Benches that are very capable, offering more than is necessary for most applications.



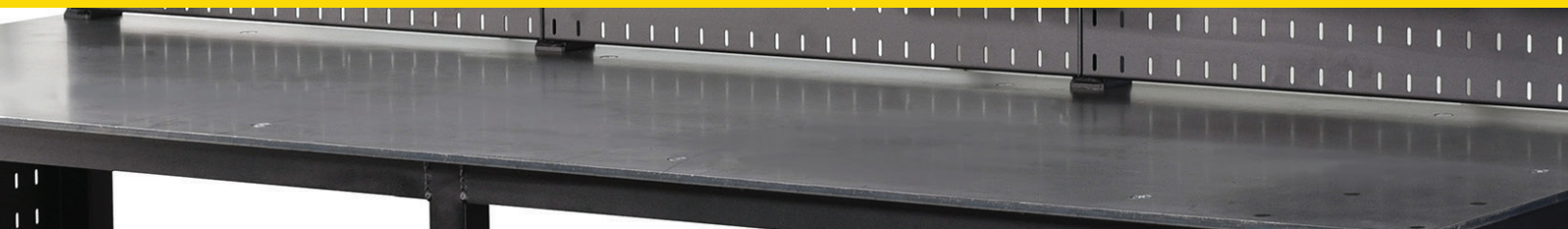
Flextur Work Bench Features:

- Available with 14 gauge steel top or Heavy Duty 3/8" steel plate work surface
- Sizes range from 48" x 28" to 96" x 32" with a 35" high work surface
- Capacity up to 2,000 lbs.
- 32" Work Benches are available with rugged locking casters
- 28" Work Benches have adjustable leveling feet
- Gridlok Panel Kits are available for easy access tool storage and accept all Gridlok accessories
- **Made in USA**





Work Benches



Built for Your Application

Flextur Work Benches come in four sizes. Two basic designs. You determine what works best for you. Add Gridlok™ panels and greatly increase the functionality of any Work Bench. Accessory Kits and Individual Accessories are available.



48" x 28" Workbench

Stationary

Specifications: 48"W x 28"D x 35"H

Capacity: 750lbs.

Weight: 87lbs.

Part Number: 79059600

Additional Details on Page 23



72" x 28" Workbench

Stationary

Specifications: 72"W x 28"D x 35"H

Capacity: 1,000lbs.

Weight: 125lbs.

Part Number: 79059620

Additional Details on Page 23



48" x 32" Workbench

Specifications: 48"W x 32"D x 35"H

Capacity: 1,500lbs.

Weight: 310lbs.

Part Number: 79059610

Additional Details on Page 23



96" x 32" Workbench

Specifications: 96"W x 32"D x 35"H

Capacity: 2,000lbs.

Weight: 595lbs.

Part Number: 79059630

Additional Details on Page 23

Work Bench Gridlok Kits



48" x 16" Gridlok™ Kit
For 48" x 28" Workbench
Specifications: **16"H x 48"W**
Part Number: **79058260**
Additional Details on Page 24



72" x 16" Gridlok™ Kit
For 72" x 28" Workbench
Specifications: **16"H x 72"W**
Part Number: **79058275**
Additional Details on Page 24



48" x 36" Gridlok™ Kit
For 48" x 32" Workbench
Specifications: **36"H x 48"W**
Part Number: **79058325**
Additional Details on Page 24



96" x 36" Gridlok™ Kit
For 96" x 32" Workbench
Specifications: **36"H x 96"W**
Part Number: **79058335**
Additional Details on Page 24



Empower

Work Bench Accessory Kits



28 Piece Accessory Kit

Part Number: **79058100**

Additional Details on Page 24



58 Piece Accessory Kit

Part Number: **79058110**

Additional Details on Page 24



2-3/4" Can Holder

Part Number: **73522416**

Additional Details on Page 29



85 Piece Accessory Kit

Part Number: **79058120**

Additional Details on Page 24



6" Vise

For 32" Workbenches

Part Number: **79058930**

Additional Details on Page 24

Flextur
Efficiency is Within Reach.

Products that Inspire

Flexibility is at the core of Flextur Work Stations. Modular heavy-duty carts give you the flexibility to assemble a solution that can overcome inefficiencies in your workflow. Pull the benefits of Gridlok™ metal pegboard off the wall and get rolling. Accessories manage anything from tools to paperwork. Mobile Work Stations with interchangeable parts that easily adapt as your needs change.

The New Generation of Carts

No other products unite customization, standardization and organization like Flextur products. These carts empower their users and inspire a culture of continuous improvement. Because they are easily changed, slight improvements can be made quickly and without major expense. Re-design and re-define your production or maintenance area with products that allow your teams to harness forward-thinking LEAN & 5S concepts.



Flextur Work Station Features

- 78"H x 32"W x 35"D x 78"
- Gridlok industrial metal pegboard for easy-access tool storage — accepts all Gridlok accessories
- 3 Accessory Kits to choose from, or build your own
- 4" Swivel Casters
- **Made in USA**



2 Panel Workstation

Specifications: **78"H x 32"W x 35"L**

Capacity: **900lbs.**

Weight: **66lbs.**

Part Number: **79209560**

Additional Details on Page 25



4 Panel Workstation

Specifications: **78"H x 32"W x 35"L**

Capacity: **900lbs.**

Weight: **162lbs.**

Part Number: **79209570**

Additional Details on Page 25

"We are tight on space, and being able to roll our tools in and out based on what we are doing is a game changer. Even clean up is easier." - Conrad Schrock, Rockwood



Work Station Accessory Kits



26 Piece Accessory Kit

Part Number: **79208050**

Additional Details on Page 25



41 Piece Accessory Kit

Part Number: **79208060**

Additional Details on Page 25

71 Piece Accessory Kit

Part Number: **79208070**

Additional Details on Page 25

Inspire

"It creates a sense of pride within my guys to customize their own workstation, and yet, it's one standardized system throughout the shop. My guys love them."

- Dave Ligget, Production Manager



Unbox Your Company's Potential

For industrial suppliers, commercial providers, or anyone else who needs ship-efficient solutions, state-of-the-art tools are vital to successfully completing packing and packaging operations. Flextur™ Pack Stations are designed to meet the needs of today's busiest shipping and packing departments. Our solution is more than a place to assemble your products; it's an innovative landscape to create, multi-task, and package with ease.



Simple

You'll find that the ultimate strength of our systems is their simplicity. Organize and store the tools you need within easy reach. You'll find what you need when you need it with organization that is at the right height and within your grasp at a moment's notice.

Pack Station Features:

- 30" x 72" work surface with a 34" working height
- Adjustable overhead box storage area
- Lower shelf for additional storage
- Full width 8" deep shelf for tape, label, and supply storage
- Gridlok industrial metal pegboard for easy access tool storage
- Adjustable leveling glides
- **Made in USA**

Pack Station Accessory Kits



23 Piece Accessory Kit

Part Number: **76458110**

Additional Details on Page 26

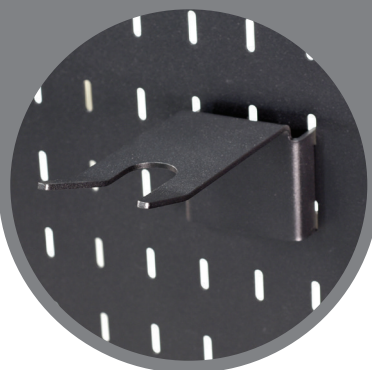


15 Piece Accessory Kit
Part Number: **76458100**
Additional Details on Page 26



Pack Station
Specifications: **72"W x 30"D x 84.5H**
Weight: **220lbs.**
Part Number: **76452000**
Additional Details on Page 26

Pack Station Accessories



6" Tool Holder
Part Number: **73528912**
Additional Details on Page 27



Roll Holder
Specifications: **72"W**
Part Number: **76458845**
Additional Details on Page 27



Lock Box
Specifications: **14"W x 10"D x 7.5"H**
Part Number: **73528770**
Additional Details on Page 27

Teardown Cart

Built Specifically for the task at hand.

The Flextur Teardown Cart was designed specifically for mechanics and maintenance personnel. Mechanics understand that it's gonna get messy. Problems with oily parts and excess fluids go away with this Teardown Cart. An integrated drain pan and optional stainless surface contain the mess. The bottom shelf and Gridlok™ metal pegboard keep tools, spray cans, parts and efficiency within reach.



Teardown Cart

Specifications: 30"W x 48"L x 35"H

Capacity: 1,000lbs.

Weight: 148lbs.

Part Number: 77906330

Additional Details on Page 27

Stainless Steel Liner

For Teardown Cart

Specifications: 30"W x 48"L

Part Number: 77908660

Additional Details on Page 28



Work Cart

Specifications: 30"W x 48"L x 35"H

Capacity: 1,000lbs.

Weight: 135lbs.

Part Number: 79089525

Additional Details on Page 27



The top of the Work Cart can be inverted depending on your need for an edge to contain pieces, parts and tools, or whether you want an edge that you can easily slide things on and off.



15 Piece Accessory Kit

For Work Cart & Teardown Cart

Part Number: 79088100

Additional Details on Page 28

Weld Tables



36" x 30" Weld Table

Stationary

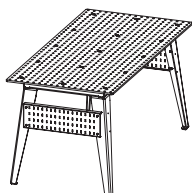
Specifications: 36" L x 30" W x 35" H

Capacity: 1,000lbs.

Weight: 255lbs.

Part Number: 78909250

This heavy duty Flextur Weld Table is ideal for smaller jobs and will improve accuracy and greatly reduce set up time for complicated weldments. Change over is easy and quick. Movable locator pins can move front-to-back and side-to-side in 2" increments. Inexperienced welders can easily make an accurate setup and become productive in minutes with this Weld Table. On board steel Gridlok tool panels keep tools organized and within easy reach. A complete line of clamps and accessories, ordered separately, are available to outfit your table. Hole sizes fit all standard 16MM clamps and accessories. 1/2" Steel top with 1/4" x 4" steel gussets provides rigidity to table top. Basic assembly required. Base has a powder-coated matte black finish, table top is unfinished. Surface flatness is +/- .015" over 4 square feet. Made in USA.



36" x 72" Weld Table

Stationary

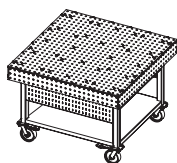
Specifications: 36" L x 72" W x 35" H

Capacity: 2,000lbs.

Weight: 505lbs.

Part Number: 78909265

This heavy duty Flextur Weld Table is ideal for medium size jobs and will improve accuracy and greatly reduce set up time for complicated weldments. Change over is easy and quick. Movable locator pins can move front-to-back and side-to-side in 2" increments. Inexperienced welders can easily make an accurate setup and become productive in minutes with this Weld Table. On board steel Gridlok tool panels keep tools organized and within easy reach. A complete line of clamps and accessories, ordered separately, are available to outfit your table. Hole sizes fit all standard 16MM clamps and accessories. 1/2" Steel top with 1/4" x 4" steel gussets provides rigidity to table top. Basic assembly required. Base has a powder-coated matte black finish, table top is unfinished. Surface flatness is +/- .015" over 4 square feet. Made in USA.



48" x 48" Weld Table

With Skirt & Caster Base

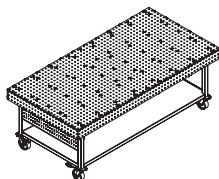
Specifications: 48" L x 48" W x 35" H

Capacity: 2,000lbs.

Weight: 685lbs.

Part Number: 78909515

This heavy duty Flextur Weld Table will improve accuracy and greatly reduce set up time for complicated weldments. Change over is easy and quick. Movable locator pins can move front-to-back and side-to-side in 2" increments. Skirting along all sides has the same hole configuration and gives the flexibility to extend your table in any direction, up to 24", with a Fixtur Block. Inexperienced welders can easily make an accurate setup and become productive in minutes with this Weld Table. On board steel Gridlok panels keep tools organized and within easy reach. A complete line of clamps and accessories, ordered separately, are available to outfit your table. Hole sizes fit all standard 16MM clamps and accessories. 1/2" Steel top with 3/8" x 5" steel struts provide rigidity to table top. 3/8" x 6" Side skirt allows you to utilize the full surface of the table or, use it to fasten 2 tables together. All tables come equipped with heavy-duty swiveling lockable 2"W x 6"H casters. Basic assembly required. Base has a durable painted matte black finish, table top is unfinished. Surface flatness is +/- .015" over 4 square feet. Made in USA.



48" x 96" Weld Table

With Skirt & Caster Base

Specifications: 48" L x 96" W x 35" H

Capacity: 3,000lbs.

Weight: 1,305lbs.

Part Number: 78909525

This heavy duty Flextur Weld Table is well suited for larger jobs and will improve accuracy and greatly reduce set up time for complicated weldments. Change over is easy and quick. Movable locator pins can move front-to-back and side-to-side in 2" increments. Skirting along all sides has the same hole configuration and gives the flexibility to extend your table in any direction, up to 24", with a Fixtur Block, or use the skirt to fasten 2 tables together for larger weldments. Inexperienced welders can easily make an accurate setup and become productive in minutes with this Weld Table. On board steel Gridlok tool panels keep tools organized and within easy reach. A complete line of clamps & accessories, ordered separately, are available to outfit your table. Hole sizes fit all standard 16MM clamps and accessories. 1/2" Steel top with 3/8" x 5" steel struts provide rigidity to table top. 3/8" x 6" Side skirt allows you to utilize the full surface of the table or, use it to fasten 2 tables together. All tables come equipped with heavy-duty swiveling lockable 2"W x 6"H casters. Basic assembly required. Base has a durable painted matte black finish, table top is unfinished. Surface flatness is +/- .015" over 4 square feet. Made in USA.

Weld Table Fixturing Kits

27 Piece Fixturing Kit

Part Number: 78908260

This 27 Piece Fixturing Kit has just the right clamps and accessories to help you be productive on your new weld table from the start. Recommended for WELD TABLE (36" x 30" Stationary). Kit includes: 4) CLAMP (5/8" vertical, 10) HOOK (4" tool cradle, 4) LOCATOR PIN (1.0", 4) LOCATOR PIN (1.5", 4) LOCATOR PIN (2.0", 1) WELD GUN HOLDER.

57 Piece Fixturing Kit

Part Number: 78908270

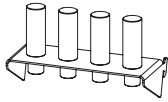
This 57 Piece Fixturing Kit has the clamps and accessories to help you be productive on your new weld table from the start. Accomplish almost anything you need to do on your weld table with this capable kit. Recommended for WELD TABLE (36" x 30" Stationary), WELD TABLE (36" x 72" Stationary), WELD TABLE (48" x 48" with Skirt & Caster Base). This kit includes: 8) CLAMP (5/8" vertical, 10) HOOK (3" standard, 10) HOOK (4" tool cradle, 4) LOCATOR PIN (.75", 4) LOCATOR PIN (1.0", 4) LOCATOR PIN (1.25", 4) LOCATOR PIN (1.5", 4) LOCATOR PIN (1.75", 4) LOCATOR PIN (2.0", 1) WELD GUN HOLDER, 2) BIN (3" x 5", 2) ANGLE BRACKET (90°.

95 Piece Fixturing Kit

Part Number: 78908280

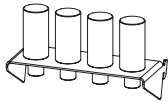
This Extensive 95 Piece Fixturing Kit has all of the clamps and accessories you'll need to be productive with your table. This extremely capable kit will have you covered no matter the task at hand. Recommended for WELD TABLE (36" x 72" Stationary), WELD TABLE (48" x 48" with Skirt & Caster Base), and WELD TABLE (48" x 96" with Skirt & Caster Base). This kit includes: 12) CLAMP (5/8" vertical, 4) CLAMP PIN (5/8", 2) V-BLOCK (90°, 10) HOOK (3" standard, 10) HOOK (4" tool cradle, 4) CLAMP (5/8" horizontal, 2) CLAMP (inserta pliers, 4) CLAMP (ratchet handle, 4) LOCATOR PIN (.75", 8) LOCATOR PIN (1.0", 4) LOCATOR PIN (1.25", 8) LOCATOR PIN (1.5", 4) LOCATOR PIN (1.75", 8) LOCATOR PIN (2.0", 4) LOCATOR STOP, 1) WELD GUN HOLDER, 2) BIN (3" x 5", 1) TOOL HOLDER (weld table, 2) ANGLE BRACKET (90°, 1) FIXTURE BLOCK (12" x 24".

Weld Table Accessories (Continues on Next Page)



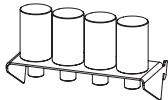
3/4" Locator Pins
For Weld Tables
Part Number: **78908520**

Movable steel locator pins that integrate with all Flextur Weld Tables. Pins move front to back or sideways in 2" increments across the surface of the table. Quickly and easily hold parts in place for reduced set up times in weldments or fixtures. Gridlok storage holder included. Available from .75" to 2" in diameter. 16MM Pin size. 4 per pack. Made in USA.



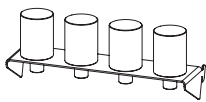
1" Locator Pins
For Weld Tables
Part Number: **78908525**

Movable steel locator pins that integrate with all Flextur Weld Tables. Pins move front to back or sideways in 2" increments across the surface of the table. Quickly and easily hold parts in place for reduced set up times in weldments or fixtures. Gridlok storage holder included. Available from .75" to 2" in diameter. 16MM Pin size. 4 per pack. Made in USA.



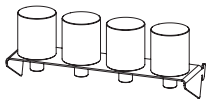
1-1/4" Locator Pins
For Weld Tables
Part Number: **78908530**

Movable steel locator pins that integrate with all Flextur Weld Tables. Pins move front to back or sideways in 2" increments across the surface of the table. Quickly and easily hold parts in place for reduced set up times in weldments or fixtures. Gridlok storage holder included. Available from .75" to 2" in diameter. 16MM Pin size. 4 per pack. Made in USA.



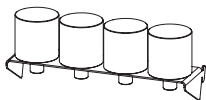
1-1/2" Locator Pins
For Weld Tables
Part Number: **78908535**

Movable steel locator pins that integrate with all Flextur Weld Tables. Pins move front to back or sideways in 2" increments across the surface of the table. Quickly and easily hold parts in place for reduced set up times in weldments or fixtures. Gridlok storage holder included. Available from .75" to 2" in diameter. 16MM Pin size. 4 per pack. Made in USA.



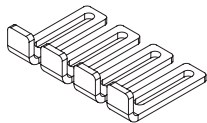
1-3/4" Locator Pins
For Weld Tables
Part Number: **78908540**

Movable steel locator pins that integrate with all Flextur Weld Tables. Pins move front to back or sideways in 2" increments across the surface of the table. Quickly and easily hold parts in place for reduced set up times in weldments or fixtures. Gridlok storage holder included. Available from .75" to 2" in diameter. 16MM Pin size. 4 per pack. Made in USA.



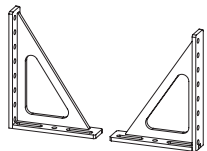
2" Locator Pins
For Weld Tables
Part Number: **78908545**

Movable steel locator pins that integrate with all Flextur Weld Tables. Pins move front to back or sideways in 2" increments across the surface of the table. Quickly and easily hold parts in place for reduced set up times in weldments or fixtures. Gridlok storage holder included. Available from .75" to 2" in diameter. 16MM Pin size. 4 per pack. Made in USA.



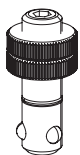
Locator Stop
For Weld Tables
Part Number: **78908560**

Steel Locator Stops that attach to Angle Brackets, Fixtur Blocks, or Flextur Weld Tables for improved accuracy and time savings. Hold firmly in place with Clamp Pins (ordered separately). Specifications: 6"L x 1.75"W. 4 per pack. Made in USA.



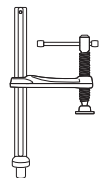
90° Angle Bracket
For Weld Tables
Part Number: **78908050**

Heavy-duty Angle Brackets integrate with all Flextur Weld Tables for easy set up and improved accuracy on vertical fixtures. Angle Brackets allow for complete use of the table surface for weldments that extend to the edge of the table. These sturdy 12" x 16" brackets are constructed of 1/2" steel. Use with Clamp Pins (ordered separately) for optimal performance. 2 per pack. Made in USA.



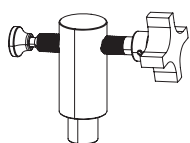
5/8" Clamp Pin
For Weld Tables
Part Number: **78908140**

This Clamp Pin integrates with all Flextur Weld Tables to hold Fixtur Blocks, Turn Tables, and Angle Brackets for optimal performance and accuracy. Clamp Pins have a knurled end to tighten by hand or firmly tighten with a 0.25" Allen wrench. 4 per pack.



5/8" Vertical Clamp
For Weld Tables
Part Number: **78908120**

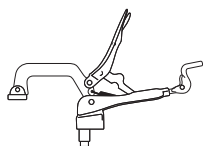
A sturdy vertical welding fixture clamp with a 16MM pin to integrate with all Flextur Weld Tables. This hand-tightening clamp with flat self-leveling end is a key component to improve accuracy and reduce set up time for complicated weldments. The main bar allows clamp to quickly slide in place with final tightening done by hand-screw adjustment. A must-have for all Flextur Weld Tables. 4 per pack.



5/8" Horizontal Clamp
For Weld Tables
Part Number: **78908105**

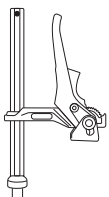
A sturdy horizontal welding fixture clamp with 16MM pin to integrate with all Flextur Weld Tables. This hand-tightening clamp with a flat self-leveling end is a key component to improve accuracy and reduce set up time for complicated weldments. A must-have for all Flextur Weld Tables. 4 per pack. Made in USA.

Weld Table Accessories (Continued)



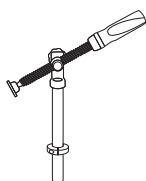
Inserta Pliers Clamp
For Weld Tables
Part Number: **78908130**

Adjustable clamp with 16MM pin to integrate with all Flextur Weld Tables. A swiveling end enables operator to quickly secure parts for basic weldments. 2 per pack.



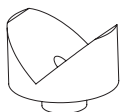
Ratchet Handle Clamp
For Weld Tables
Part Number: **78908160**

A robust ratcheting clamp with a 16MM pin to tighten and secure heavy structures for welding. A self-leveling end creates a secure clamping action. Integrates with all Flextur Weld Tables. 2 per pack.



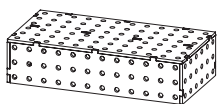
Horizontal Variable Angle Clamp
For Weld Tables
Part Number: **78908180**

A self-leveling Horizontal Variable Angle Clamp with 16MM pin to integrate with all Flextur Weld Tables. Variable height adjustment to fit your application. Designed to push parts in place on complicated weldments for improved accuracy. 2 per pack.



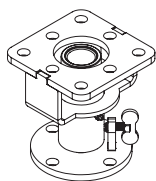
90° V-Block
For Weld Tables
Part Number: **78908875**

V-Blocks accurately hold pipe or round pieces in place for welding. Equipped with 16MM pin to integrate with all Flextur Weld Tables. Clamps are sold separately. Specifications: 1.5"H. 4 per pack. Made in USA.



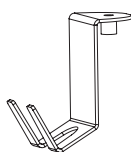
12" x 24" Fixture Block
For Weld Tables
Specifications: 12"L x 24"W x 6"H
Part Number: **78908245**

Heavy-duty Fixture Block integrates with all Flextur Weld Tables for easy set up and improved accuracy on complex weldments. These sturdy blocks are constructed of 3/8" steel. Use with Clamp Pins (ordered separately) for optimal performance. Made in USA.



6" Turn Table
For Weld Tables
Specifications: 6"L x 5.5"W x 5.5"H
Part Number: **78908780**

This heavy-duty Turn Table provides additional flexibility for welders to access all sides of a project. Equipped with 16MM pin to integrate with all Flextur Weld Table. Table rotates easily with taper roller bearing hub. Thumb screw allows operator to lock rotating table in any position. Use with Clamp Pins (ordered separately) for optimal performance. Made in USA.



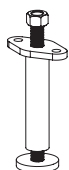
Tool Holder
For Weld Tables
Part Number: **78908750**

This holder keeps your grinder within easy reach. Equipped with 16MM mounting pin to integrate with the Flextur Welding Table and is easily removed when not in use. 2 per pack. Made in USA.



Weld Gun Holder
For Weld Tables
Part Number: **78908905**

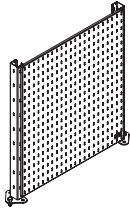
This holder keeps your welding gun within easy reach. Equipped with 16MM pin to integrate with all Flextur Weld Table and is easily removed when not in use. Made in USA.



Leveling Kit
For 48" Weld Tables
Part Number: **78908505**

Strong steel bolt on Levelers will keep WELD TABLE (48" x 48" with Skirt & Caster Base), and WELD TABLE (48" x 96" with Skirt & Caster Base) level on uneven floors. These brackets also make it easy to bolt two or more tables together and maintain a level working surface when welding large fixtures. Heavy-duty 0.75" threaded rod with nut makes it easy to adjust. Powder-coated matte black finish. 4 per pack. Made in USA.

Weld Table Gridlok™ Kit



Gridlok™ Kit

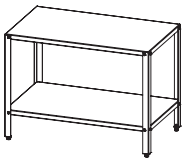
For Weld Tables

Specifications: **37"H x 34"W**

Part Number: **78908305**

Strong 14-gauge steel Gridlok panel kit that fits on all Flextur Weld Tables to keep tools and parts within easy reach of the operator. Bolts to top of Weld Table with 4 = 5/8" bolts that are included. Accepts all Gridlok hooks, bins, trays, holders, etc. from Flextur. Powder-coated matte black finish. Made in USA.

Work Benches



48" x 28" Workbench

Stationary

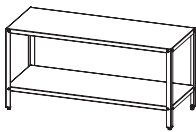
Specifications: **48"W x 28"D x 35"H**

Capacity: **750lbs.**

Weight: **87lbs.**

Part Number: **79059600**

This Flextur Work Bench features a durable 14 gauge steel work surface, a bottom storage shelf, and leveling feet. This stationary bench is ideal for lighter duty applications where a more robust bench is not required. Gridlok is available for this Work bench with GRIDLOK KIT (48"W x 16"H for Work Benches). A complete line of Accessories, ordered separately, are available to outfit your Work Bench. Basic assembly required. Powder-coated matte black finish. Made in USA.



72" x 28" Workbench

Stationary

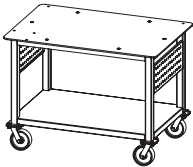
Specifications: **72"W x 28"D x 35"H**

Capacity: **1,000lbs.**

Weight: **125lbs.**

Part Number: **79059620**

This Flextur Work Bench features a durable 14 gauge steel work surface. A bottom storage shelf and leveling feet. This stationary bench is ideal for lighter duty applications where a more robust bench is not required. Gridlok is available for this Work bench with GRIDLOK KIT (72"W x 16"H for Work Benches). A complete line of Accessories, ordered separately, are available to outfit your Work Bench. Basic assembly required. Powder-coated matte black finish. Made in USA.



48" x 32" Workbench

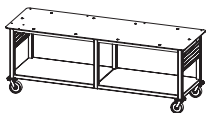
Specifications: **48"W x 32"D x 35"H**

Capacity: **1,500lbs.**

Weight: **310lbs.**

Part Number: **79059610**

This heavy duty Flextur Work Bench features a durable 3/8" steel top. A bottom shelf and steel Gridlok panels keep tools organized along the side of the bench. Additional Gridlok panels are available with GRIDLOK KIT (48"W x 36"H for Work Benches). A complete line of Accessories, ordered separately, are available to outfit your Work Bench. 32"D Benches are pre-drilled for VISE (6" for 32" Work Benches and come equipped with heavy-duty swiveling lockable 2"W x 6"H casters. Basic assembly required. Base has a durable painted matte black finish, table top is unfinished. Made in USA.



96" x 32" Workbench

Specifications: **96"W x 32"D x 35"H**

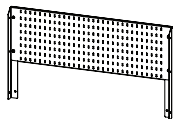
Capacity: **2,000lbs.**

Weight: **595lbs.**

Part Number: **79059630**

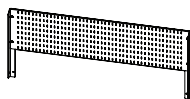
This heavy duty Flextur Work Bench features a durable 3/8" steel top. A bottom shelf and on board steel Gridlok panels keep tools organized along the side of the bench. Additional Gridlok panels are available with GRIDLOK KIT (96"W x 36"H for Work Benches). A complete line of Accessories, ordered separately, are available to outfit your Work Bench. 32"D Benches are pre-drilled for VISE (6" for 32" Work Benches and come equipped with heavy-duty swiveling lockable 2"W x 6"H casters. Basic assembly required. Base has a durable painted matte black finish, table top is unfinished. Made in USA.

Work Bench Gridlok™ Kits



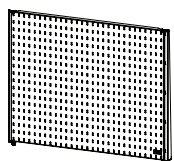
48" x 16" Gridlok™ Kit
For 48" x 28" Workbench
Specifications: **16"H x 48"W**
Part Number: **79058260**

Sturdy 14-gauge panel with mounting brackets is designed specifically for a Flextur 48" x 28" Work Bench. This kit greatly improves functionality by keeping tools within easy reach and gives you the ability to customize your workbench to your needs. This Gridlok Kit integrates with all Gridlok hooks, bins, trays, holders, etc. from Flextur. Kit includes 1) Gridlok panel, 2) vertical mounting post brackets and hardware. Basic assembly required. Powder-coated matte black finish. Made in USA.



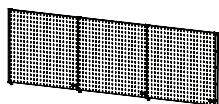
72" x 16" Gridlok™ Kit
For 72" x 28" Workbench
Specifications: **16"H x 72"W**
Part Number: **79058275**

Sturdy 14-gauge panel with mounting brackets is designed specifically for a Flextur 72" x 28" Work Bench. This kit greatly improves functionality by keeping tools within easy reach and gives you the ability to customize your workbench to your needs. This Gridlok Kit integrates with all Gridlok hooks, bins, trays, holders, etc. from Flextur. Kit includes 1) Gridlok panel, 2) vertical mounting post brackets and hardware. Basic assembly required. Powder-coated matte black finish. Made in USA.



48" x 36" Gridlok™ Kit
For 48" x 32" Workbench
Specifications: **36"H x 48"W**
Part Number: **79058325**

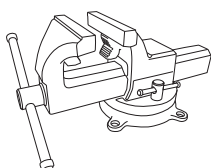
Sturdy 14-gauge panel with mounting brackets is designed specifically for a Flextur 48" x 32" Work Bench. This kit greatly improves functionality by keeping tools within easy reach and gives you the ability to customize your workbench to your needs. This Gridlok Kit integrates with all Gridlok hooks, bins, trays, holders, etc. from Flextur. Kit includes 1) Gridlok panel, 2) vertical mounting post brackets and hardware. Basic assembly required. Powder-coated matte black finish. Made in USA.



96" x 36" Gridlok™ Kit
For 96" x 32" Workbench
Specifications: **36"H x 96"W**
Part Number: **79058335**

Sturdy 14-gauge panels with mounting brackets is designed specifically for a Flextur 96" x 32" Work Bench. This kit greatly improves functionality by keeping tools within easy reach and gives you the ability to customize your workbench to your needs. This Gridlok Kit integrates with all Gridlok hooks, bins, trays, holders, etc. from Flextur. Kit includes 3) Gridlok panel, 4) vertical mounting post brackets and hardware. Basic assembly required. Powder-coated matte black finish. Made in USA.

Work Bench Accessory Kits



6" Vise
For 32" Workbenches
Part Number: **79058930**

Bessey 6" jaw width vise with 7" opening capacity and 4" throat depth. This bench vise has a steel swivel, bolt on base. This is a heavy duty vise that features precision movements and tight tolerances. Good for pipe from .25" to 5" and everything in between.

28 Piece Accessory Kit
Part Number: **79058100**

This 28 piece Accessory Kit has all of the accessories you'll need to be productive with your Work Bench from day one. Recommended for any Flextur Work Benches with Gridlok Kits installed. Kit includes: 10) HOOK (3" standard, 10) HOOK (4" tool cradle, 2) CAN HOLDER (2.75", 1) MAGNET STRIP (12", 1) SCREW DRIVER RACK, 2) BIN (3"x 5", 2) BIN (4"x 8".

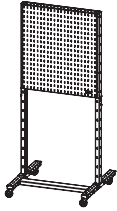
58 Piece Accessory Kit
Part Number: **79058110**

This Extensive 58 piece Accessory Kit has all of the accessories you'll need to be productive with your Work Bench no matter what you are trying to organize or accomplish. Recommended for any Flextur Work Benches with Gridlok Kits installed. Kit includes: 10) HOOK (1" standard, 10) HOOK (3" standard, 10) HOOK (6" industrial, 10) HOOK (4" tool cradle, 1) SWING ARM (22", 2) CAN HOLDER (2.75", 2) CAN HOLDER (3.25", 1) MAGNET STRIP (12", 1) SCREW DRIVER RACK, 2) BIN (3"x 5", 2) BIN (4"x 8", 1) SHELF (30"x 10", 1) SOCKET HOLDER (1/2", 4) TRAY (9"x 11"x 2" inbox, 2) TRAY (9"x 11"x 6".

85 Piece Accessory Kit
Part Number: **79058120**

This Extensive 85 piece Accessory Kit has all of the accessories you'll need to be productive with your Work Bench. This extremely capable kit will have you covered no matter what you are trying to organize or accomplish. Recommended for 96" and 72" Work Benches with Gridlok Kits installed. Kit includes: 10) HOOK (1" standard, 10) HOOK (3" standard, 10) HOOK (3" industrial, 10) HOOK (6" industrial, 10) HOOK (4" tool cradle, 1) POWER OUTLET (6 port, 1) SWING ARM (22", 4) CAN HOLDER (2.75", 2) CAN HOLDER (3.25", 1) CUPHOLDER (magnetic, 1) MAGNET STRIP (12", 1) PEN HOLDER, 1) SCREW DRIVER RACK, 1) TOWEL DISPENSER (4.6"x 9.5", 4) BIN (3"x 5", 4) BIN (4"x 8", 2) BIN (7"x 10", 2) BIN (10"x 12", 2) SHELF (30"x 10", 1) SOCKET HOLDER (3/8", 1) SOCKET HOLDER (1/2", 4) TRAY (9"x 11"x 2" inbox, 2) TRAY (9"x 11"x 6".

Work Stations



2 Panel Workstation

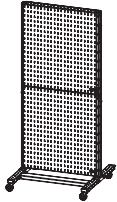
Specifications: **78"H x 32"W x 35"L**

Capacity: **900lbs.**

Weight: **66lbs.**

Part Number: **79209560**

A sturdy Mobile Work Station to keep all tools within easy reach of operator. 2) 14-gauge Gridlok panels cover (1/2) of the cart on both sides and will hold an array of modular bins, trays, and hooks that are perfect for hardware, parts, tools, and paperwork. Includes; Base Kit, 73" Vertical Posts, 2) 36"H x 32"W 14-gauge steel Gridlok panels. Choose an Accessory Kit that best fits your need. Basic assembly required. Swiveling lockable 3" casters included. Powder-coated matte black finish. Made in USA.



4 Panel Workstation

Specifications: **78"H x 32"W x 35"L**

Capacity: **900lbs.**

Weight: **162lbs.**

Part Number: **79209570**

A sturdy Mobile Work station to keep all tools within easy reach of operator. 4) 14-gauge Gridlok panels cover both sides of the posts and will hold an array of modular bins, trays, and hooks that are perfect for hardware, parts, tools, and paperwork. Includes; Base Kit, 73" Vertical Posts, 4) 36"H x 32"W 14-gauge steel Gridlok panels. Choose an Accessory Kit that best fits your need. Basic assembly required. Swiveling lockable 3" casters included. Powder-coated matte black finish. Made in USA.

Work Station Accessory Kits

26 Piece Accessory Kit

Part Number: **79208050**

This 26 piece Accessory Kit has what you need to utilize your Work Station on day one. Recommended for WORK STATION (2 Panel). Kit includes: 10) HOOK (3" standard, 10) HOOK (4" tool cradle, 1) SCREW DRIVER RACK, 2) BIN (3"x 5", 2) BIN 4"x 8", 1) SHELF (30"x 15").

41 Piece Accessory Kit

Part Number: **79208060**

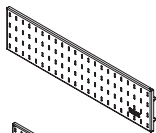
This 41 piece Accessory Kit has all of the accessories you'll need to be productive with your Work Station. Recommended for WORK STATION (2 Panel) or WORK STATION (4 Panel). Kit includes: 10) HOOK (3" standard, 10) HOOK (6" industrial, 10) HOOK (4" tool cradle, 1) SWING ARM (22", 2) CAN HOLDER (2.75", 1) MAGNET STRIP (12", 1) SCREW DRIVER RACK, 2) BIN (3"x 5", 2) BIN 4"x 8", 2) SHELF (30"x 15").

71 Piece Accessory Kit

Part Number: **79208070**

This Extensive 71 piece Accessory Kit has all of the accessories you'll need to be productive with your WORK STATION. This extremely capable kit will have you covered no matter what you are trying to organize or accomplish. Recommended for WORK STATION (4 Panel). Kit includes: 10) HOOK (3" standard, 10) HOOK (6" industrial, 10) HOOK (4" tool cradle, 10) HOOK (1" standard, 1) HANDLE, 1) POWER OUTLET (6 port, 1) SWING ARM (22", 2) CAN HOLDER (2.75", 2) CAN HOLDER (3.25", 1) CUPHOLDER (magnetic, 1) MAGNET STRIP (12", 1) PEN HOLDER, 1) SCREW DRIVER RACK, 1) TOWEL DISPENSER (4.6"x 9.5", 4) BIN (3"x 5", 4) BIN 4"x 8", 2) BIN (7"x 10", 2) SHELF (30"x 15", 1) SOCKET HOLDER (.5", 4) TRAY (9"x 11"x 2" inbox, 2) BASE SHELF (30"x 15").

Work Station Accessories (Continues on Next Page)



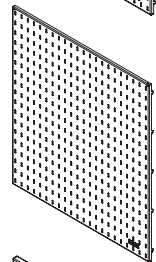
Gridlok™ Panels

3.5 Square Feet - For Work Stations

Specifications: **8"H x 32"W**

Part Number: **73584205**

Sturdy steel 14-gauge panels designed to mount on Flextur Work Stations. Integrates with all Gridlok hooks, bins, trays, holders, etc. from Flextur. Powder-coated matte black finish. 2 per pack. Made in USA.



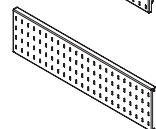
Gridlok™ Panels

7 Square Feet - For Work Stations

Specifications: **36"H x 32"W**

Part Number: **73584220**

Sturdy steel 14-gauge panels designed to mount on Flextur Work Stations. Integrates with all Gridlok hooks, bins, trays, holders, etc. from Flextur. Powder-coated matte black finish. 2 per pack. Made in USA.



Gridlok™ Post Brace

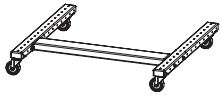
For Work Stations

Specifications: **33.6"W x 8.5"H**

Part Number: **79208520**

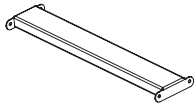
This sturdy 8.5"H x 33.6"L Gridlok panel bolts between posts to serve as a brace on any Flextur Work Stations. Bolts included. Powder-coated matte black finish. Made in USA.

Work Station Accessories (Continued)



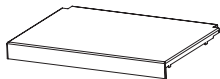
Base Kit
For Work Stations
Specifications: **32"W x 35"L**
Part Number: **79208105**

Complete base kit for Flextur Work Station, including 3" heavy-duty swiveling lockable casters and hardware. Basic assembly required. Powder-coated matte black finish. Specifications: 32"W x 35"L. Made in USA.



Base Runner Support
For Work Stations
Part Number: **79208125**

Use this kit to fasten 2 - Work Stations together, or to provide additional support to your Work Station. Powder-coated matte black finish. Made in USA.



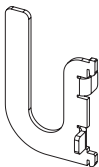
Base Shelf
For Work Stations
Specifications: **30"W x 15"D**
Capacity: **250lbs.**
Part Number: **79208805**

Sturdy steel shelf designed to cover the base runners and create additional shelf space on Flextur Work Stations. Posts need to be mounted in center of base when using this shelf. Powder-coated matte black finish. 2 per pack. Made in USA.



73" Post
For Work Stations
Specifications: **3"W x 73"H**
Part Number: **79208510**

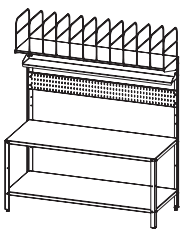
Sturdy 14-gauge steel posts that fit all Flextur Work Stations. Powder-coated matte black finish. 2 per pack. Powder-coated matte black finish. Made in USA.



Handle
For Work Stations
Specifications: **3"W x 6"L**
Part Number: **73528380**

Steel Gridlok handle that attaches to any Flextur Work Station, making it easier to maneuver and move loaded carts. Powder-coated matte black finish. Made in USA.

Pack Station



Pack Station
Specifications: **72"W x 30"W x 84.5H**
Weight: **220lbs.**
Part Number: **76452000**

This single-sided 72" Flextur Pack Station allows you to arrange a solution that fits your application. Work surface is 14 gauge steel, 72"W x 32"D and 34"H. An adjustable overhead box storage area with Box Dividers to separate box sizes for easy dispensing. A full width 8" deep shelf near the top of the Pack Station is great for holding labels, tape and other necessary supplies. A full width Gridlok panel keeps additional tools organized and within easy reach. A complete line of Accessories, ordered separately, are available to outfit your Pack Station. Gridlok integrates with all Gridlok hooks, bins, trays, holders, etc. from Flextur. The lower shelf provides ample storage for additional packing materials. Equipped with adjustable leveling glides for uneven floors. Includes all hardware. Basic assembly required. Powder-coated matte black finish. Made in USA.

Pack Station Accessory Kits

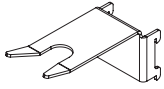
15 Piece Accessory Kit
Part Number: **76458100**

This 15 piece Accessory Kit has all of the accessories you'll need to be productive with your Pack Station from day one. Kit includes: 10) HOOK (3" standard, 2) BIN (3" x 5", 2) BIN (4" x 8", 1) TOOL HOLDER (6".

23 Piece Accessory Kit
Part Number: **76458110**

This 23 piece Complete Accessory Kit has all of the accessories you'll need to be productive with your Pack Station no matter how you plan to use it. Kit includes: 10) HOOK (3" standard, 2) BIN (3" x 5", 2) BIN (4" x 8", 1) CUPHOLDER, (Magnetic, 1) Pen Holder, 1) POWER OUTLET (6 port, 1) TOOL HOLDER (6", 4) TRAY (9" x 11" x 2" inbox, 1) Monitor Mount.

Pack Station Accessories



6" Tool Holder

For Pack Station

Part Number: **73528912**

Designed to easily and ergonomically store most tape guns. This Tool Holder mounts to the Pack Station's Gridlok Panel and can be placed within easy reach. It can also easily be moved for different operators or applications as needed. Powder-coated matte black finish. Made in USA.



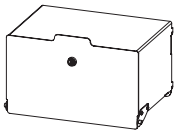
Roll Holder

For Pack Station

Specifications: **72"W**

Part Number: **76458845**

This universal Roll Holder accepts most any rolls of packing materials up to 72"W and 12" in diameter. Designed primarily for packaging paper this Roll Holder bolts to the Pack Station frame putting materials within easy reach. Its simple design with a quick pin release makes it a breeze to change out rolls.



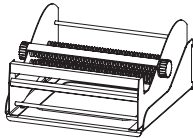
Lock Box

For Pack Stations

Specifications: **14"W x 10"D x 7.5"H**

Part Number: **73528770**

Lock personal items or valuables in the Flextur Lock Box. This box uses Gridlok hooks and mounts to the Pack Station's Gridlok Panel. Hinged on the bottom for easy access to contents. Comes with two keys. Powder-coated matte black finish. Specifications: 14"W x 10"D x 7.5"H. Made in USA.



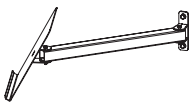
Label Dispenser

For Pack Station

Specifications: **15"W x 12"D x 7"H**

Part Number: **73528570**

Load and dispense labels and tape easily. Change one roll at a time. Integrates with all Gridlok panels. Accepts up to 6" rolls. 15"W x 12"D x 7"H.



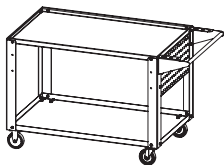
Monitor Mount

For Pack Stations

Part Number: **76458610**

This universal Monitor Mount accepts most monitors and tablets. Bolted to the Flextur Pack Station Frame. This 22" swing arm design allows you to place the information you need in optimal viewing position. Made in USA.

Work Carts



Work Cart

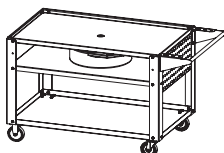
Specifications: **30"W x 48"L x 35"H**

Capacity: **1,000lbs.**

Weight: **135lbs.**

Part Number: **79089525**

A sturdy 11-gauge cart that is agile and easy to push around. With two fixed and two swiveling lockable 3" casters and a robust handle you can easily take your work with you. The top can easily be inverted depending on your need for an edge to contain pieces, parts and tools, or whether you want an edge that you can easily slide things on and off. Along with tool storage in the handle, on board steel Gridlok tool panels keep tools organized and within easy reach. A complete line of accessories, ordered separately, are available to outfit your cart. Basic assembly required. Powder-coated matte black finish. Made in USA.



Teardown Cart

Specifications: **30"W x 48"L x 35"H**

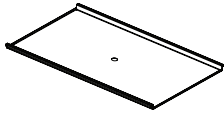
Capacity: **1,000lbs.**

Weight: **148lbs.**

Part Number: **77906330**

A sturdy 11-gauge cart that is agile and easy to push around. With two fixed and two swiveling lockable 3" casters and a robust handle you can easily take your work with you. A second shelf contains a 5 gallon drain pan centered below the drain hole in the top of the cart. Along with tool storage in the handle, on board steel Gridlok tool panels keep tools organized and within easy reach. A complete line of accessories, ordered separately, are available to outfit your cart. A STAINLESS STEEL LINER (for Tear Down Cart - 48" x 30") is recommended when working with corrosive chemicals. Basic assembly required. Powder-coated matte black finish. Made in USA.

Work Cart & Teardown Cart Accessory Kits



Stainless Steel Liner

For Teardown Cart

Specifications: **30"W x 48"L**

Part Number: **77908660**

This 16 gauge Stainless Steel Liner rests on top of the Teardown Cart and protects it from corrosive materials that will damage the carts finish. Formed to guide fluids to the carts drain pan. Specifications: 48" x 30". Made in USA.

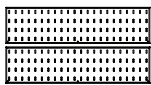
15 Piece Accessory Kit

For Work Cart & Teardown Cart

Part Number: **79088100**

This 15 Piece Accessory Kit has just what you need to get more from your Flextur Work Cart, or Teardown Cart. Kit includes: 10) HOOK (3" standard, 2) CAN HOLDER (2.75", 1) SCREW DRIVER RACK, 2) BIN (3"x 5".

Gridlok™



Gridlok™ Wall Mount System

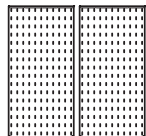
3.5 Square Feet

Specifications: **8"H x 32"W**

Capacity: **400lbs.**

Part Number: **73584250**

Two sturdy steel 8"H x 32"W 14-gauge wall mount panels. Designed to mount on a 16" stud wall and on any flat surface. These panels integrate with all Gridlok hooks, bins, trays, holders, etc. from Flextur. Includes; 5) 1" Standard Hooks, 5) 3" Standard Hooks, 5) 6" Standard Hooks, and 5) 4" Tool Cradle Hooks. Mounting instructions and hardware included. Powder-coated matte black finish. 2 per pack. Made in USA.



Gridlok™ Wall Mount System

7 Square Feet

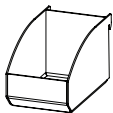
Specifications: **32"H x 16"W**

Capacity: **400lbs.**

Part Number: **73584305**

Two sturdy steel 8"H x 32"W 14-gauge wall mount panels. Designed to mount on a 16" stud wall and on any flat surface. These panels integrate with all Gridlok hooks, bins, trays, holders, etc. from Flextur. Includes; 5) 1" Standard Hooks, 5) 3" Standard Hooks, 5) 6" Standard Hooks, and 5) 4" Tool Cradle Hooks. Mounting instructions and hardware included. Powder-coated matte black finish. 2 per pack. Made in USA.

Gridlok™ Accessories (Continues on Next Page)

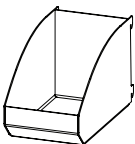


3" x 5" Bin

Specifications: **3"W x 5"D x 3"H**

Part Number: **73521912**

Steel bin ideal for storage of small parts. Integrates with Gridlok panels and all Flextur products. Bins are easily moved to the optimal location for maximum efficiency. Powder-coated matte black finish. 2 per pack. Made in USA.

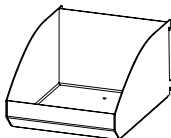


4" x 8" Bin

Specifications: **4"W x 8"D x 5"H**

Part Number: **73521919**

Steel bin ideal for storage of many small parts. Integrates with Gridlok panels and all Flextur products. Bins are easily moved to the optimal location for maximum efficiency. Powder-coated matte black finish. 2 per pack. Made in USA.

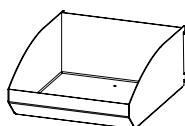


7" x 10" Bin

Specifications: **7"W x 10"D x 5"H**

Part Number: **73521927**

Steel bin ideal for storage of many small parts. Integrates with Gridlok panels and all Flextur products. Bins are easily moved to the optimal location for maximum efficiency. Powder-coated matte black finish. 2 per pack. Made in USA.



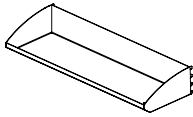
10" x 12" Bin

Specifications: **10"W x 12"D x 5"H**

Part Number: **73521933**

Steel bin ideal for storage of medium sized parts. Integrates with Gridlok panels and all Flextur products. Bins are easily moved to the optimal location for maximum efficiency. Powder-coated matte black finish. Made in USA.

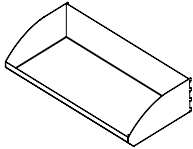
Gridlok™ Accessories (Continued, Continues on Next Page)



30" x 10" Bin

Specifications: **30"W x 10"D x 7"H**
Capacity: **250lbs.** Part Number: **73521945**

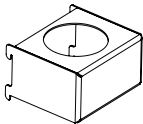
Steel bin ideal for storage of larger parts. Integrates with Gridlok panels and all Flextur products. Bins are easily moved to the optimal location for maximum efficiency. Powder-coated matte black finish. Specifications: 30"W x 10"D x 7"H. 2 per pack. Made in USA.



30" x 15" Bin

Specifications: **30"W x 15"D x 7"H**
Capacity: **250lbs.** Part Number: **73521952**

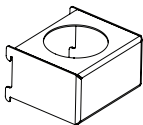
Steel bin ideal for storage of large parts. Integrates with Gridlok panels and all Flextur products. Bins are easily moved to the optimal location for maximum efficiency. Powder-coated matte black finish. Specifications: 30"W x 15"D x 7"H. 2 per pack. Made in USA.



2-3/4" Can Holder

Part Number: **73522416**

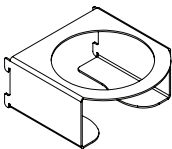
A modular Can Holder that integrates with Gridlok panels. Fits 2.75" diameter can or bottle. Powder-coated matte black finish. 2 per pack. Made in USA.



3-1/4" Can Holder

Part Number: **73522424**

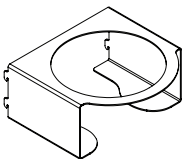
A modular Can Holder that integrates with all Gridlok panels. Fits 3.25" diameter can or bottle. Powder-coated matte black finish. 2 per pack. Made in USA.



4-3/4" Can Holder

Part Number: **73522436**

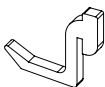
A modular Can Holder that integrates with all Gridlok panels. Fits standard quart size cans. Powder-coated matte black finish. Made in USA.



7" Can Holder

Part Number: **73522446**

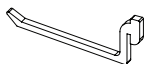
A modular Can Holder that integrates with all Gridlok panels. Fits standard gallon size cans. Powder-coated matte black finish. Made in USA.



1" Hook Standard

Capacity: **50lbs.**
Part Number: **73524612**

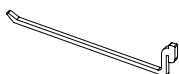
Sturdy steel hooks that integrate with all Gridlok panels. Coated with black oxide finish for longer wear. 10 per pack. Made in USA.



3" Hook Standard

Capacity: **20lbs.**
Part Number: **73524618**

Sturdy steel hooks that integrate with all Gridlok panels. Coated with black oxide finish for longer wear. 10 per pack. Made in USA.



6" Hook Standard

Capacity: **12lbs.**
Part Number: **73524623**

Sturdy steel hooks that integrate with all Gridlok panels. Coated with black oxide finish for longer wear. 10 per pack. Made in USA.

Gridlok™ Accessories (Continued, Continues on Next Page)



**3" Hook
Industrial**
Capacity: **50lbs.**
Part Number: **73524636**

Sturdy steel industrial grade hooks that integrate with all Gridlok panels. Coated with black oxide finish for longer wear. 50lbs. capacity. 10 per pack. Made in USA.



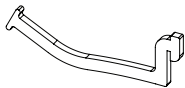
**6" Hook
Industrial**
Capacity: **35lbs.**
Part Number: **73524642**

Sturdy steel industrial grade hooks that integrate with all Gridlok panels. Coated with black oxide finish for longer wear. 35lbs. capacity. 10 per pack. Made in USA.



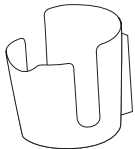
**10" Hook
Industrial**
Capacity: **15lbs.**
Part Number: **73524647**

Sturdy steel industrial grade hooks that integrate with all Gridlok panels. Coated with black oxide finish for longer wear. 15lbs. capacity. 10 per pack. Made in USA.



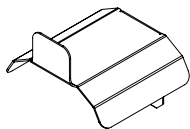
4" Tool Cradle
Capacity: **50lbs.**
Part Number: **73524656**

Sturdy steel industrial grade cradle hooks that integrate with all Gridlok panels. Coated with black oxide finish for longer wear. 50lbs. capacity. 10 per pack. Made in USA.



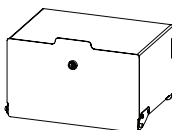
**Cupholder
Magnetic**
Part Number: **73528120**

A magnetic cupholder that can be placed anywhere on a metallic surface and fits most cups and mugs. Plastic frame with strong magnet back.



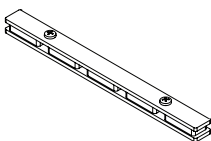
Hose Hanger
Specifications: **7"W x 6"D x 6"H**
Part Number: **73528395**

Sturdy steel Hose Hanger that integrates with Gridlok panels for hose or cord storage. Powder-coated matte black finish. Made in USA.



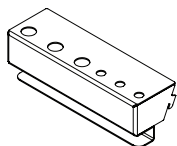
Lock Box
Specifications: **14"W x 10"D x 7.5"H**
Part Number: **73528770**

Lock personal items or valuables in the Flextur Lock Box. This box uses Gridlok hooks and mounts to the Pack Station's Gridlok Panel. Hinged on the bottom for easy access to contents. Comes with two keys. Powder-coated matte black finish. Made in USA.



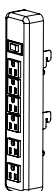
Magnet Strip
Specifications: **1"W x 12"L**
Part Number: **73528610**

This strong magnetic strip is an ideal way to keep drivers, bits, and small tools within easy reach of your work. A must-have for all LEAN Work Stations. Made in USA.



Pen Holder
Specifications: **6"W x 2.75"D x 3"H**
Part Number: **73528750**

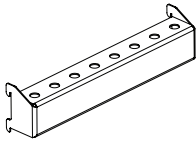
A modular Pen Holder that integrates with Gridlok panels and holds up to six pens in various sizes. Powder-coated matte black finish. Made in USA.



**Power Outlet
6 Port**
Part Number: **73528760**

Power strip with six outlets that mounts to any Gridlok panel.

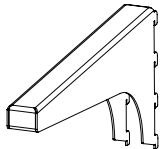
Gridlok™ Accessories (Continued, Continues on Next Page)



Screw Driver Rack

Specifications: **12"W x 1.5"D x 2"H**
Part Number: **73528810**

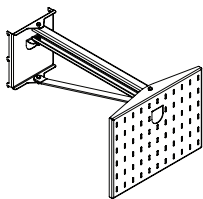
A sturdy modular Screwdriver Holder that integrates with all Gridlok panels and provides storage for up to eight screwdrivers. Powder-coated matte black finish. Specifications: 12"L x 1.5"D x 2"H. Made in USA.



Shelf Spacer

Specifications: **1.5"W x 15"D**
Capacity: **100lbs.**
Part Number: **73528815**

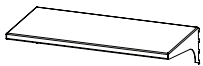
Use these spacers to fill gaps between shelves when connecting multiple Flextur Work Stations. They also serve as specialty hangers and integrate with Gridlok panels. Powder-coated matte black finish. 4 per pack. Made in USA.



Swing Arm

Specifications: **16"W x 12.5"H**
Arm Specifications: **22"D**
Capacity: **50lbs.**
Part Number: **73528890**

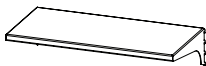
Sturdy Swing Arm mounted on a 14-gauge Gridlok tool panel for maximum workplace efficiency. This modular Swing Arm mounting panel and tool panel integrates with all Gridlok panels. Powder-coated matte black finish. Made in USA.



30" x 10" Shelf

Specifications: **30"W x 10"D**
Capacity: **250lbs.**
Part Number: **73529211**

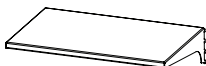
Sturdy modular steel shelves that integrate with all Gridlok panels. Powder-coated matte black finish. 2 per pack. Made in USA.



30" x 15" Shelf

Specifications: **30"W x 15"D**
Capacity: **250lbs.**
Part Number: **73529216**

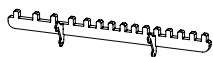
Sturdy modular steel shelves that integrate with all Gridlok panels. Powder-coated matte black finish. 2 per pack. Made in USA.



30" x 20" Shelf

Specifications: **30"W x 20"D**
Capacity: **250lbs.**
Part Number: **73529223**

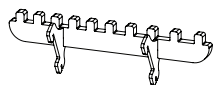
Sturdy modular steel shelves that integrate with all Gridlok panels. Powder-coated matte black finish. 2 per pack. Made in USA.



1/2" Drive Socket Holder

Part Number: **73529330**

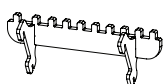
Store up to 15, 1/2" drive sockets where they are easily visible and easily reached. Socket Holder integrates with all Gridlok panels. Powder-coated matte black finish. Made in USA.



3/8" Drive Socket Holder

Part Number: **73529320**

Store up to 10, 3/8" drive sockets where they are easily visible and easily reached. Socket Holder integrates with all Gridlok panels. Powder-coated matte black finish. Made in USA.

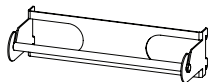


1/4" Drive Socket Holder

Part Number: **73529310**

Store up to 10, 1/4" drive sockets where they are easily visible and easily reached. Socket Holder integrates with all Gridlok panels. Powder-coated matte black finish. Made in USA.

Gridlok™ Accessories (Continued, Continues on Next Page)

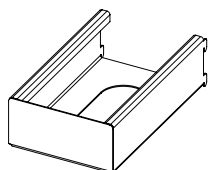


Roll Towel Dispenser

Standard Roll

Part Number: **73529512**

Sturdy steel Roll Towel Dispenser that integrates with all Gridlok panels. Fits all standard roll towels. Powder-coated matte black finish. Made in USA.

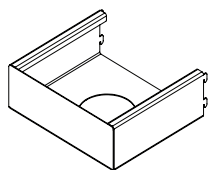


Towel Dispenser

4.6" x 9.5" Kimberly Clark

Part Number: **73529523**

Sturdy steel Towel Dispenser that integrates with all Gridlok panels. Designed to fit 4.6" x 9.5" Kimberly Clark towel boxes. Powder-coated matte black finish. Made in USA.

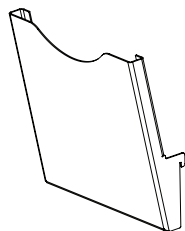


Towel Dispenser

8.75" Square

Part Number: **73529534**

Sturdy steel Towel Dispenser that integrates with all Gridlok panels. Designed to fit square towel boxes. Powder-coated matte black finish. Made in USA.



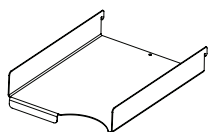
Tray

Upright Tray

Specifications: **9"W x .5"D x 9.5"H**

Part Number: **73529805**

This slanted steel tray is ideal to use on Work Stations to keep paperwork clean and organized. Multiple trays can be stacked on top of each other for maximum space utilization. Integrates with all Gridlok panels. Accommodates any 8.5" x 11" documents or paperwork. Paper extends beyond top end of tray for better accessibility. Powder-coated matte black finish. 4 per pack. Made in USA.



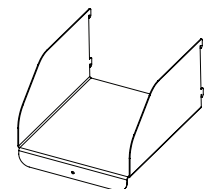
Tray

Inbox Tray

Specifications: **9"W x .11.25"D x 2"H**

Part Number: **73529815**

A sturdy modular inbox to keep paperwork clean, safe, and separated on any Work Station. Multiple trays can be stacked on top of each other for maximum space utilization. Integrates with Gridlok panels. Accommodates any 8.5" x 11" documents or paperwork. A must-have for all work stations. Powder-coated matte black finish. 4 per pack. Made in USA.



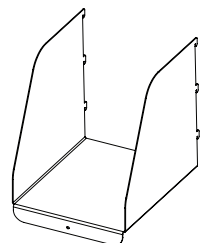
Tray

6" H Paper Tray

Specifications: **9"W x .11.25"D x 6"H**

Part Number: **73529818**

A modular Steel Tray for managing paperwork or storing drawings or literature. Accommodates any 8.5" x 11" documents or paperwork. Integrates with Gridlok panels. Powder-coated matte black finish. 2 per pack. Made in USA.



Tray

12" Paper Tray

Specifications: **9"W x .11.25"D x 12"H**

Part Number: **73529823**

A modular Steel Tray for managing paperwork or storing drawings or literature. Accommodates any 8.5" x 11" documents or paperwork. Integrates with Gridlok panels. Powder-coated matte black finish. 2 per pack. Made in USA.

Flextur™

Efficiency is Within Reach.

Flextur is a family owned Amish company based in Dalton, Ohio in the heart of Amish Country. We strive to inspire a culture of continuous improvement by promoting lean enterprise and empowering individuals. We manufacture smart, robust Weld Tables, Work Benches, Work Stations, and Packaging Stations that unite customization, standardization and organization. All our products utilize our patent-pending Gridlok™ industrial metal pegboard and possess the ability to increase efficiency in all aspects of your business. For more information visit flexturusa.com

A Division of Pioneer Corp.

16875 Jericho Road • Dalton, Ohio 44618

connect@flexturusa.com • flexturusa.com • 877-435-3988

PATENT PENDING • **MADE IN USA**