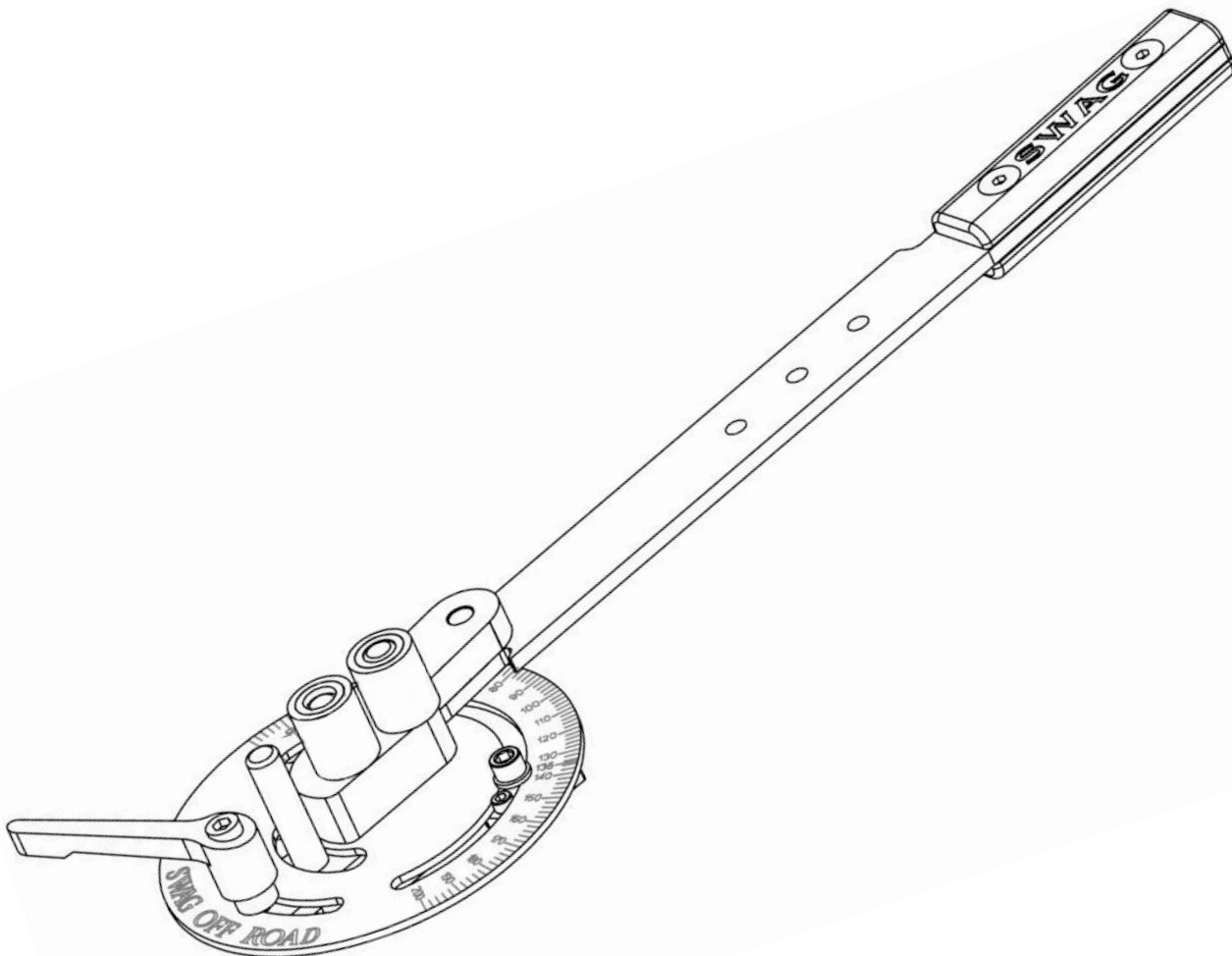




SWAG OFF ROAD FLAT BAR BENDER



Trick-Tools.com

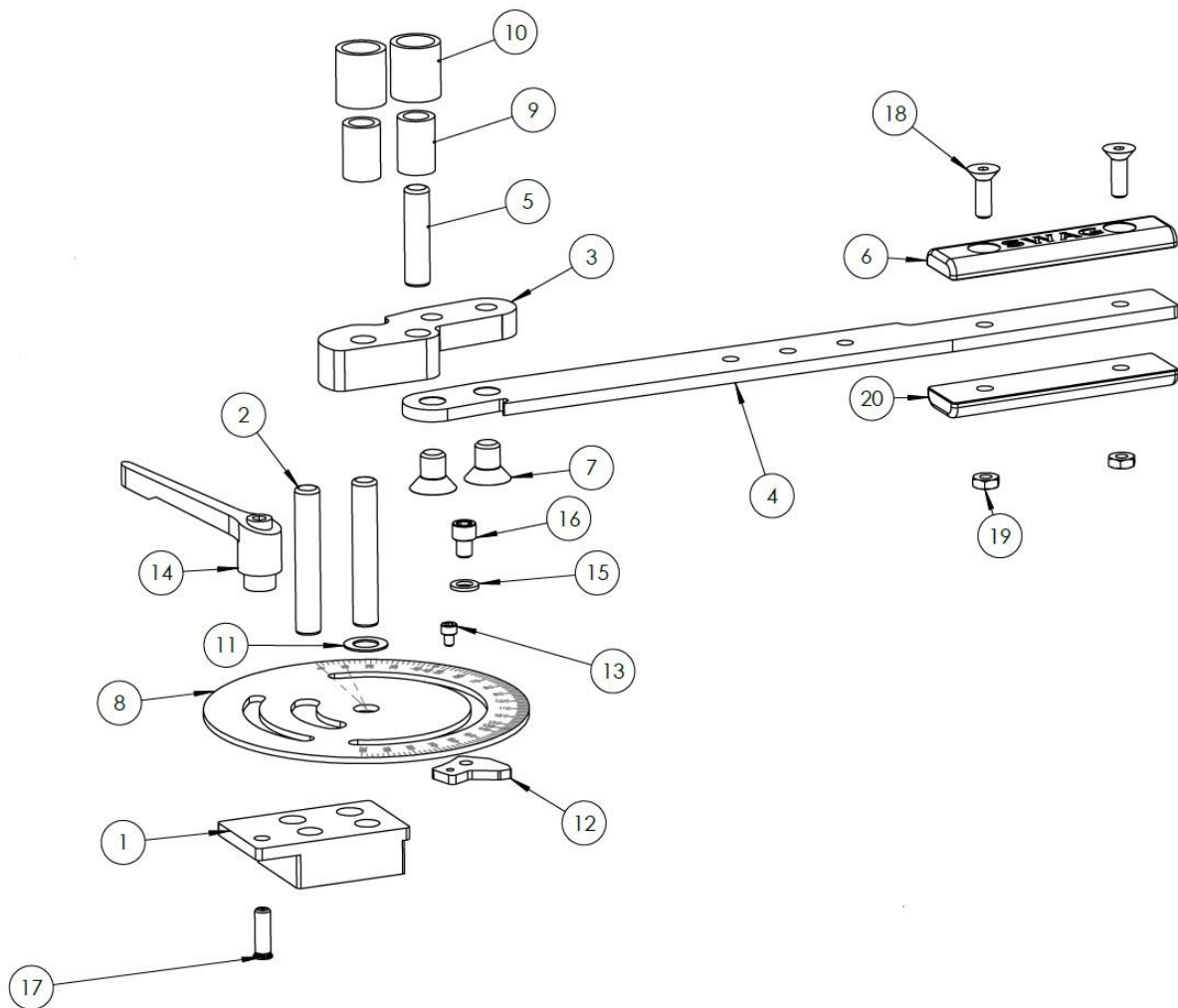
75 Truman Road
Pella, IA 50219

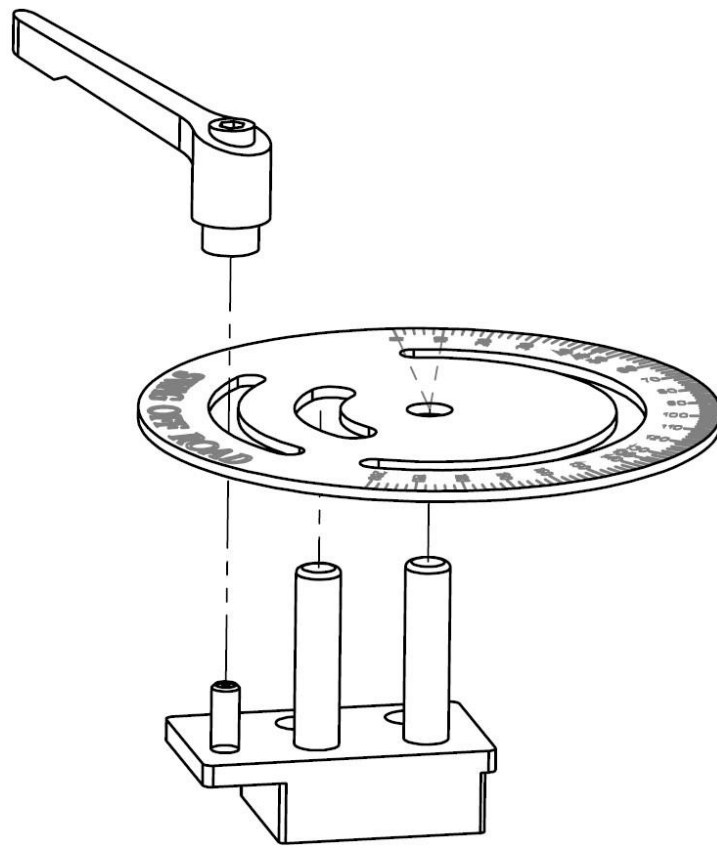
Phone: 1-877-VAN-SANT

E-mail: sales@trick-tools.com

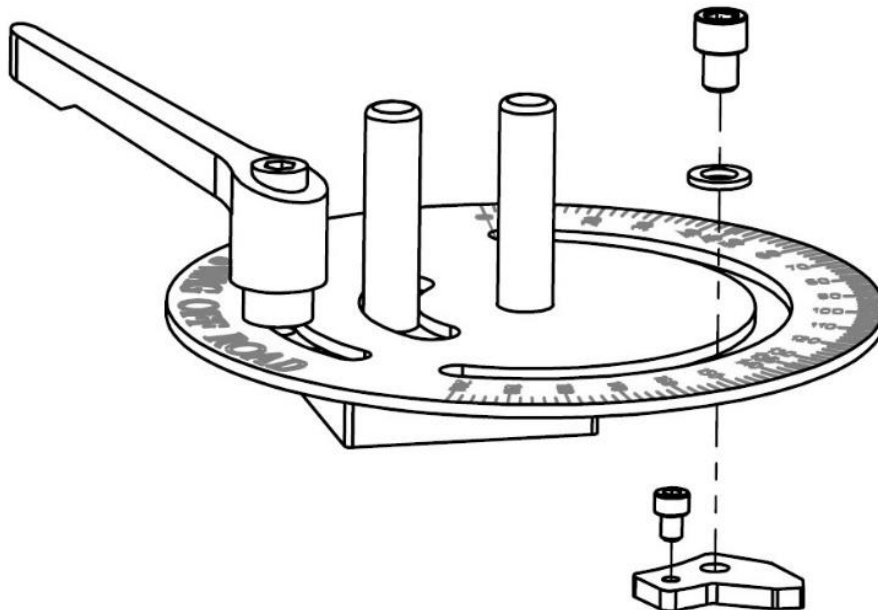


ITEM	DESCRIPTION	QTY.
1	Base	1
2	1/2" x 3" Dowel Pin	2
3	Pivot	1
4	Arm	1
5	Dowel Pin	1
6	Grip Upper	1
7	1/2"-13 X 3/4" FHSCS 82deg. blk ox	2
8	Degree Wheel	1
9	TUBE 0.5"ID X 0.75"OD	2
10	TUBE 0.75" ID X 1"OD	2
11	1/2" x 7/8"OD Washer MIL Spec. cad yellow	1
12	STOP	1
13	10-24 x 1/4" SCS zinc	1
14	ADJUSTABLE HANDLE 5/16"-18	1
15	5/16" x 0.562"OD Washer MIL Spec. cad yellow	1
16	5/16"-18 x 3/8" SCS blk ox	1
17	5/16"-18 x 1" PEM press fit stud	1
18	5/16"-18 x 1" FHSCS blk oxide 82°	2
19	5/16"-18 Thin Hex Jam Nut zinc	2
20	Grip Lower	1

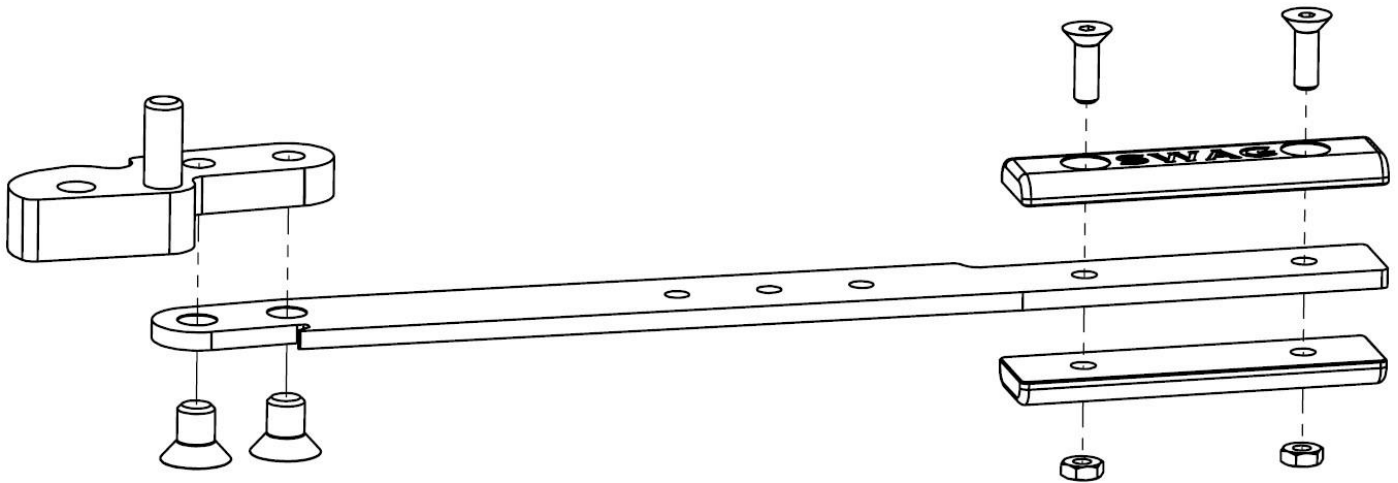




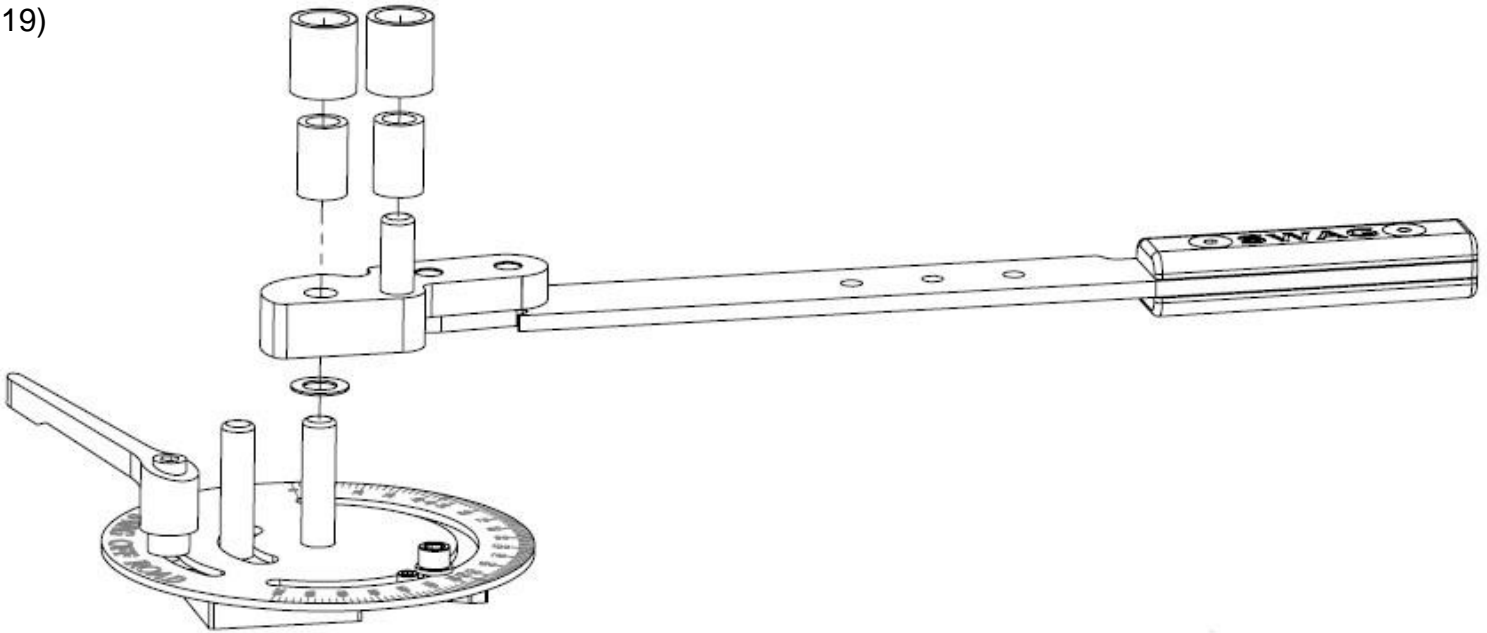
Step 1: Attach the Degree Wheel (8) to the Base (1) as shown above. The easiest way to attach the Handle (14) to the threaded PEM Stud (17) is to pull up against the spring pressure in the handle and use an Allen key to tighten the bolt down. This will allow the handle to stay stationary while the internal barrel threads onto the stud.



Step 2: Attach the Bend Stop (12) to the Degree Wheel using the provided 10-24x1/4" (13) and the 5/16"-18 x 3/8" (16) with the 5/16" Washer (15) on the larger bolt. Orient the stop so the pointer sticks out from under the degree wheel and the rectangular protrusion points towards the Handle as shown above.



Step 3: Attach the Arm (4) to the Pivot (3) using the two 1/2"-13 x 3/4" (7) as shown above. Then attach the Upper and Lower Grip (6 & 20) to the arm using the two 5/16"-18 x 1" (18) and the 5/16"-18 Thin Jam Nut (19)



Step 4: Drop the 1/2" x 7/8" Washer (11) onto the pin that is in the middle of the Degree Wheel and then slide the arm assembly onto the same pin as shown above. The optional bend radius tubes (9 & 10) can then be added to the center pin and the pin that is press fit into the pivot.



Trick-Tools.com

75 Truman Road

Pella, IA 50219

Phone: 1-877-VAN-SANT

E-mail: sales@trick-tools.com

