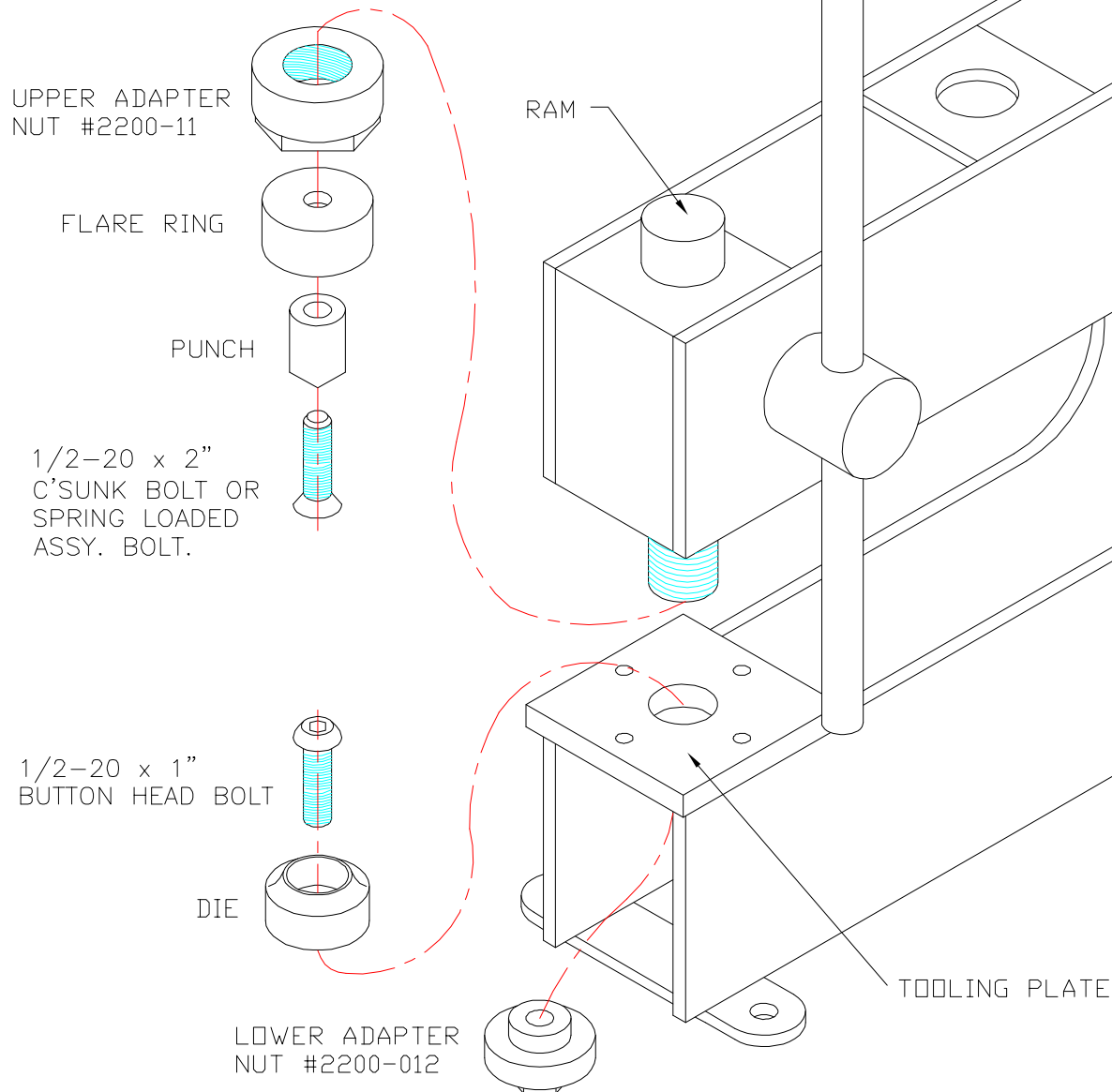


PRESS  
NEW STYLE 12/14/98  
WITH PUNCH & FLARE ASSEMBLY  
rev. 2-23-2003



MAXIMUM  
CAPACITY Ø3 PUNCH  
& FLARE 16 GAGE STEEL

SAFETY!

GOOD JUDGMENT AND A SAFE ATTITUDE SHOULD BE APPLIED AT ALL TIMES

- \* KEEP ALL BODY PARTS AND FOREIGN OBJECTS OUT OF PUNCH AND RAM AREA, WHILE IN OPERATION.
- \* ALWAYS WEAR SAFETY GLASS WHILE OPERATING MACHINE.
- \* DO NOT OPERATE UNDER THE INFLUENCE OF DRUGS & ALCOHOL.

NEW STYLE PUNCH & FLARES HAVE TAP ON FEMALE END (FLARE RING)  
IF CUSTOMER HAS OLD & NEW STYLE PUNCH & FLARE & PRESS WITH OLD STYLE. THEN THEY NEED:  
1) NEW UPPER ADAPTER NUT #2200-011  
2) NEW 1/2-20 x 2" C' SUNK BOLT  
3) NEW 1/2-20 x 1" BUTTON HEAD BOLT.  
\$25.00 FOR ALL 3 ITEMS.  
ADAPTS NEW STYLE PUNCHES TO PRESS.

ASSEMBLY:

- 1) SCREW UPPER ADAPTER NUT ONTO RAM.
- 2) BOLT PUNCH TO FLARE RING WITH 1/2-20 x 1 1/2 C'SUNK BOLT THEN THREAD ASSEMBLY TO UPPER NUT.
- 3) ASSEMBLE DIE AND LOWER NUT ADAPTER WITH BUTTON HEAD BOLT. (AS SHOWN)
- 4) LOWER THE RAM TO ALIGN THE DIE AND THE FLARE RING, BEFORE TIGHTENING THE BOLT TO THE LOWER ADAPTER NUT.