

REVISIONS			
REV.	DESCRIPTION	DATE	
A	INITIAL RELEASE	2/28/2007	
B	CHANGE SWITCH AND CORD GRIP	3/13/2007	
C	CORRECT PART NUMBER FROM 6991K57 TO 69915K57 CHANGE DESCRIPTION TO READ 1/2" NPT CORD GRIP	3/21/2007	
D	DELETE PART HY-1300 AND REPLACE WITH HY-1305 AND HY-1310	3/26/2007	
E	CHANGE BELT FROM AX-55 TO AX-53, ADD MOTOR SPACER AND MOTOR MOUNT HARDWARE	5/4/2007	
F	DELETE HW-1008 & HW-1007 & REPLACE WITH HW-1009 REPLACE PITT-21 WITH HW-1043	6/5/2007	
G	ADDED LABELS: REPLACED DUAL PULLEYS WITH SINGLE PULLEYS; 5L610 V-BELT QTY 1 WAS 4L560; HY-1058 & HY-1058-1 WERE HY-1055; HW-1026 WAS #6-32x3/8"	12/12/08	
H	REPLACED PART #S HY-1053, HY-1054, HY-1058, HY-105-1 WITH PITT-3, 2053-2, 2053-3. ALSO CHANGED TO SQUARE DRIVE GEARS. ADDED SHEET 2, ELECTRICAL KIT	7/26/2011	
J	ADDED 1/4-20x.625 AND 1/4-20x.75 BOLTS. ADDED PLATE TO ELECTRICAL KIT.	8/9/2011	
K	ADDED WEAR PLATE	8/10/2011	
L	Changed (4) 1/4-20 x 5/8 long bolts to 1/4-20 x 3/4 long. Changed motor & belt info	7/17/2012	KL

**NOTE: SEE SHEET 2 FOR ELECTRICAL KIT INFORMATION**

## RAMS-2012 20 GA HYPERSPEED PITTSBURGH MACHINE

ITEM NO.	PART NUMBER	DESCRIPTION	QTY.
1	HY-1052	PLATE, HYPERSPEED	1
2	HY-1054	HYPERSPEED TOP COVER ASSY	1
3	2061	FHCS, 3/8-16 x 1", BLACK	4
4	2054	ADJUSTING BOLT:1/4-20 THREAD	4
5	HY-1201-002	BACK PANEL ASSEMBLY	1
6	HY-1201	HYPERSPEED CABINET, ASSEMBLED	1
7	HW-1002	PHMS, 6-32 X 1/2", ZINC	2
8	N/A	30A, 220 VOLT, AC SWITCH	1
9	N/A	220 VOLT LIGHT ASSY	1
10	Z003180S1DXXXX	3 HP, 1740 RPM, 230V, 182T-215T MOTOR	1
11	HY-1201-001	FRONT PANEL ASSEMBLY	1
12	PITT-22	RAMS LOGO SIGN	1
13	HY-1340	PLATE, MOTOR SPACER	1
14	HY-1350	WASHER, MOTOR	4
15	HW-1043	FHCS, 1/4-20 X 1/2", BLACK	6
16	HW-1031	HHCS, 1/4-20 X 3/8", ZINC	26
17	HW-1009	WASHER, 1/4" FLAT, 5/8" O.D., ZINC	30
18	HW-1027	HHCS, TYPE F THD CUTTING, 8-32 X 3/8"	4
19	69915K57	CORD GRIP	1
20	N/A	POWER CORD ASSEMBLY	1
21	Caution Label	LABEL, CAUTION	1
22	Made in the USA	LABEL, MADE IN USA	1
23	RAMS 2012	SERIAL NUMBER TAGS	1
24	AK41x3/4	PULLEY, V-BELT, SINGLE	1
25	AX57	V-BELT	1
26	HW-1026	HHCS, TYPE F THD CUTTING, 8-32 X 3/8", ZINC	2
27	GEAR BOX ASSEMBLY	GEAR BOX ASSEMBLY	1
28	PITT-2	20 GA PITTSBURGH TOP PANELS	1
29	2053-3	GUIDE BAR, 20 GA PITTSBURGH	1
30	PITT-3	COVER TOP "B"	1
31	2053-2 ASSY	DESCRIPTION	1
32	HFBOLT 0.25-20x0.75x0.75-N	1/4-20 X 3/4, HHCS	8
33	2080	WEAR PLATE	1

DIMENSIONS ARE IN INCHES  
TOLERANCES:  
FRACTIONAL  $\pm 1/16$   
ANGULAR: MACH  $\pm$  BEND  $\pm$   
TWO PLACE DECIMAL  $\pm .01$   
THREE PLACE DECIMAL  $\pm .005$

	NAME	DATE
DRAWN	RAF	02/28/07
CHECKED	SSL	12/12/08
ENG APPR.		
MFG APPR.		
Q.A.		

## HORIZON SYSTEMS MACHINING

**9121 58TH PLACE  
KENOSHA, WI 53144  
PH: 262-605-1122  
FAX: 262-605-1198**

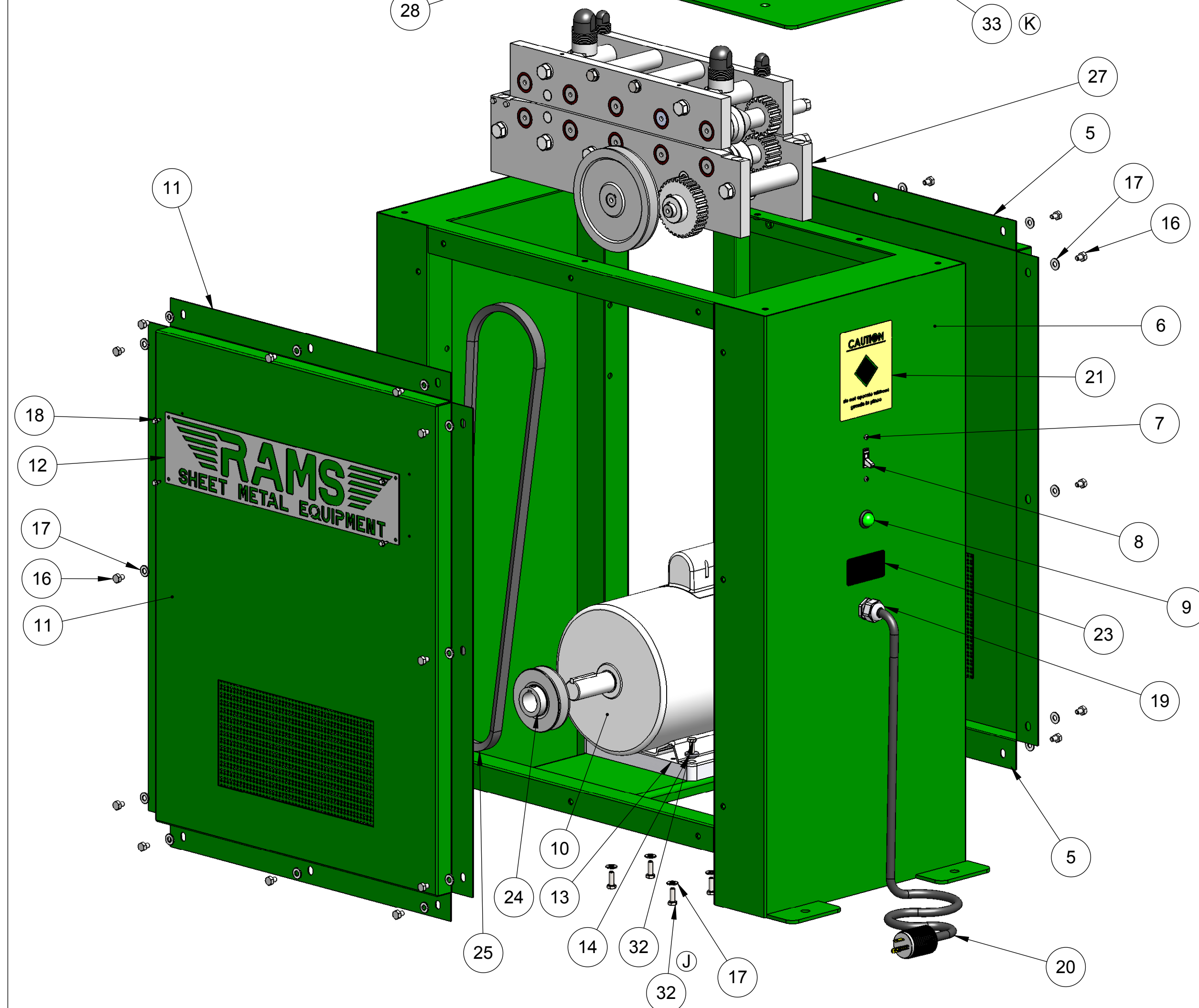
THE INFORMATION CONTAINED IN THIS  
DRAWING IS THE SOLE PROPERTY OF  
HORIZON SYSTEMS MACHINING.  
ANY REPRODUCTION IN PART OR AS A WHOLE  
WITHOUT THE WRITTEN PERMISSION OF  
HORIZON SYSTEMS MACHINING IS PROHIBITED.

MATERIAL	SEE BOM
FINISH	N/A
DO NOT SCALE DRAWING	

TITLE:	20 GA. HYPERSPEED PITTSBURGH MACHINE
--------	--------------------------------------

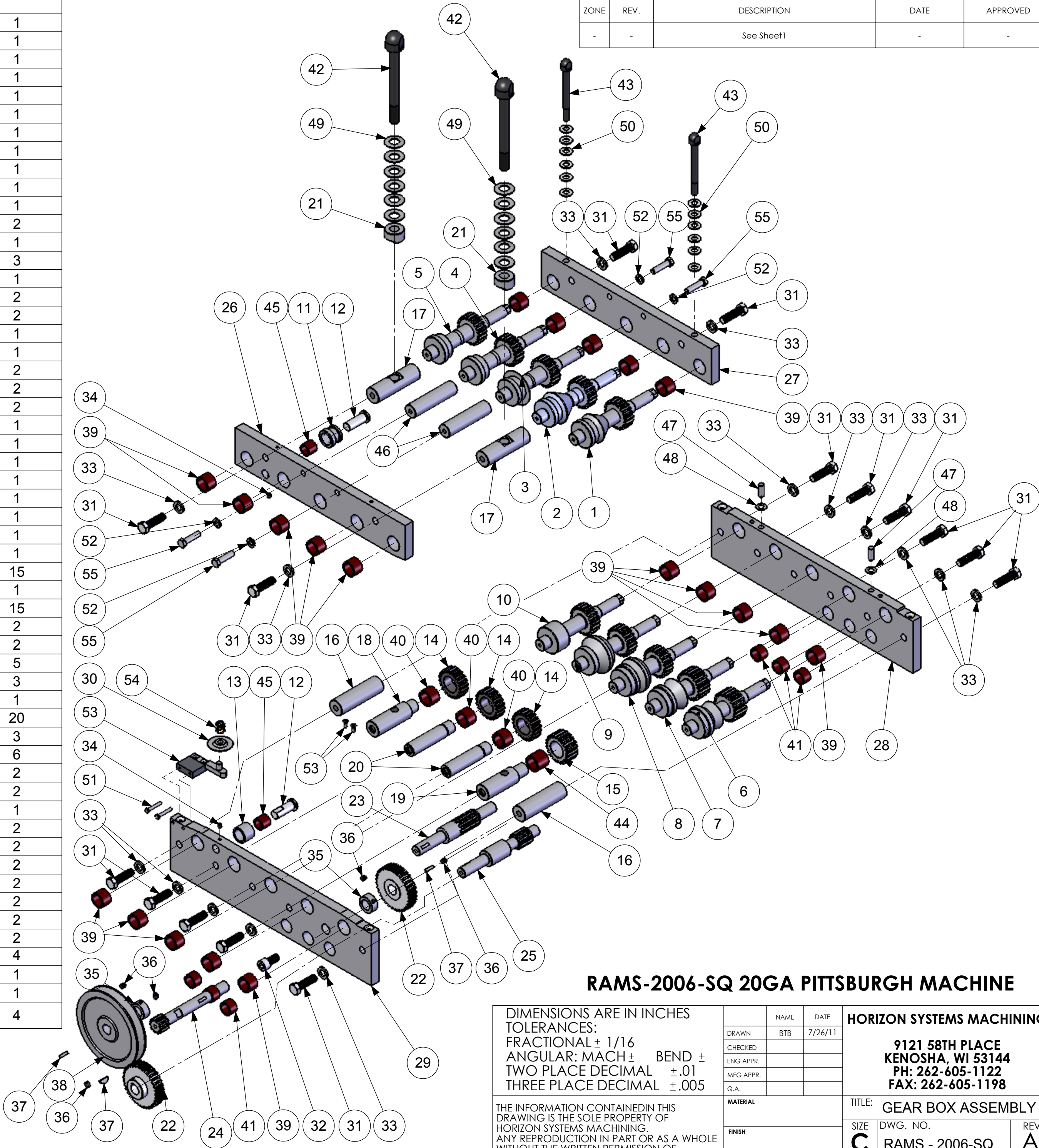
SIZE	DWG. NO.	REV
<b>C</b>	<b>HY-2012-SQ</b>	<b>L</b>

SCALE: 1:5	SHEET 1 OF 2
------------	--------------





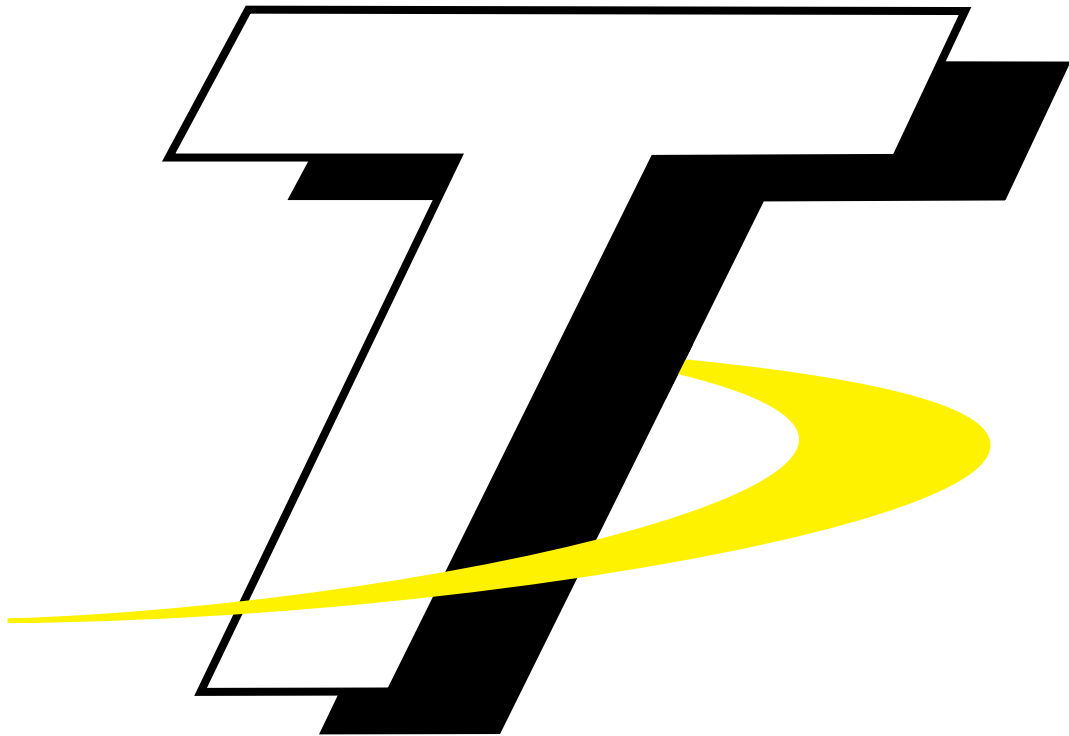
ITEM NO.	PART NUMBER	DESCRIPTION	Default/QTY.
1	SQ-2001	T1 ROLLER GEAR	1
2	SQ-2002	T2 ROLLER GEAR	1
3	SQ-2003	T3 ROLLER GEAR	1
4	SQ-2004	T4 ROLLER GEAR	1
5	SQ-2005	T5 ROLLER GEAR	1
6	SQ-2006	B1 ROLLER GEAR	1
7	SQ-2007	B2 ROLLER GEAR	1
8	SQ-2008	B3 ROLLER GEAR	1
9	SQ-2009	B4 ROLLER GEAR	1
10	SQ-2010	B5 ROLLER GEAR	1
11	2011	IDLER ROLLER	1
12	2012	IDLER ROLL PIN	2
13	2013	IDLER ROLLER	1
14	2014	IDLER GEAR	3
15	2015	IDLER GEAR (LARGE)	1
16	2016	PLAIN SPACER	2
17	2017	PLAIN SPACER (DRILLED)	2
18	2018	STEPPED SPACER #1 (TAPPED)	1
19	2019	STEPPED SPACER #2 (TAPPED)	1
20	2020	STEPPED SPACER #3	2
21	2021	SADDLE WASHER	2
22	2022	DRIVE GEAR	2
23	2023	#1 DRIVE SHAFT	1
24	2024	#2 DRIVE SHAFT	1
25	2025	#3 DRIVE SHAFT	1
26	2026	TOP PLATE (FRONT)	1
27	2027	TOP PLATE (BACK)	1
28	2028	BOTTOM PLATE (BACK)	1
29	2029	BOTTOM PLATE (FRONT)	1
30	2031	OPENING ROLLER	1
31	2032	HHCS, 1/2-13 x 1 1/2"	15
32	2034	1/2-13 X 1" LONG SHCS	1
33	2033	1/2" LOCK WASHER	15
34	2035	SET SCREW, 1/4-20 X 5/16"	2
35	2039	SPACER	2
36	2040	SET SCREW, 5/16-18 X 3/8"	5
37	2041	WOODRUFF KEY 606	3
38	BK60x.75	PULLEY	1
39	2044	NEEDLE BEARING # B-1412	20
40	2045	NEEDLE BEARING # BH-1412	3
41	2046	NEEDLE BEARING #JTT-1210	6
42	2049	ADJUSTING BOLT: 5/8-11 THREAD	2
43	2052	ADJUSTING BOLT:3/8-16 THREAD	2
44	2068	NEEDLE BEARING # BH-1416	1
45	2069	NEEDLE BEARING # BH-1012	2
46	2070	TOP SPACER	2
47	DPM 0.375x1	DOWEL PIN 3/8 DIA X 1 LONG	2
48	SPACER	SPACER-SIDE PLATE	2
49	N/A	LARGE BELVILLE WASHER	2
50	N/A	SMALL BELVILLE WASHER	2
51	HFBOLT 10-32X1.25	10-32X1-1/4,HHCS	2
52	Regular LW 0.375	3/8 LOCK WASHER	4
53	OPEN ROLL BRACKET	OPEN ROLL BRACKET ASSY	1
54	SP-1001	LEE SPRING, LC 059H 01 M	1
55	HFBOLT 0.375-16x1.5x1-N	3/8-16X1-1/2, HHCS	4



Distributed by: **Trick-Tools.com**

Trick-Tools  
75 Truman Road  
Pella, IA 50219

Phone: 1-877-VAN-SANT  
E-mail: [sales@trick-tools.com](mailto:sales@trick-tools.com)



Here at Trick Tools we believe that our customers deserve the best value in their tool and equipment purchases. We are constantly at work searching out a variety of high quality, high performance tools to offer at the best prices possible. Our commitment to you is that we will not offer "cheap junk" anywhere on our website. You, the customer, help us to evaluate our products constantly and as soon as an ongoing quality issue is uncovered we will correct it or discontinue that product immediately. We hope to earn your continued trust.